



## IGNITE YOUR INSPIRATION

Immerse yourself in the work of Dale Chihuly with a walk through the Galleries, Garden and the Glasshouse. Continue your experience with artistically-inspired dishes at Collections Café amid Dale Chihuly's colorful, personal collections.

LOCATED AT THE BASE OF THE  
SPACE NEEDLE, SEATTLE CENTER  
[CHIHULYGARDENANDGLASS.COM](http://CHIHULYGARDENANDGLASS.COM)

**CHIHULY**  
GARDEN AND GLASS

PRIVATE TOUR PACKAGES AVAILABLE. VISIT US ONLINE TO LEARN MORE.

# where

GUIDE TO SEATTLE

### PLAY

THE CITY'S  
TOP HOLIDAY  
HAPPENINGS

### DRINK

SEATTLE'S  
COFFEE CULTURE

### SHOP

LOCALLY MADE  
STOCKING  
STUFFERS



DECEMBER 2017

[wheretraveler.com](http://wheretraveler.com)



Bill Speidel's

# Underground

Tour

## *Dirt* *Corruption* *Sewers* *Scandal!*

World-Famous, Hilarious,  
Historic Tour of the Old City  
Beneath Seattle's Sidewalks

In Pioneer Place Park,  
Pioneer Square, the City's Birthplace

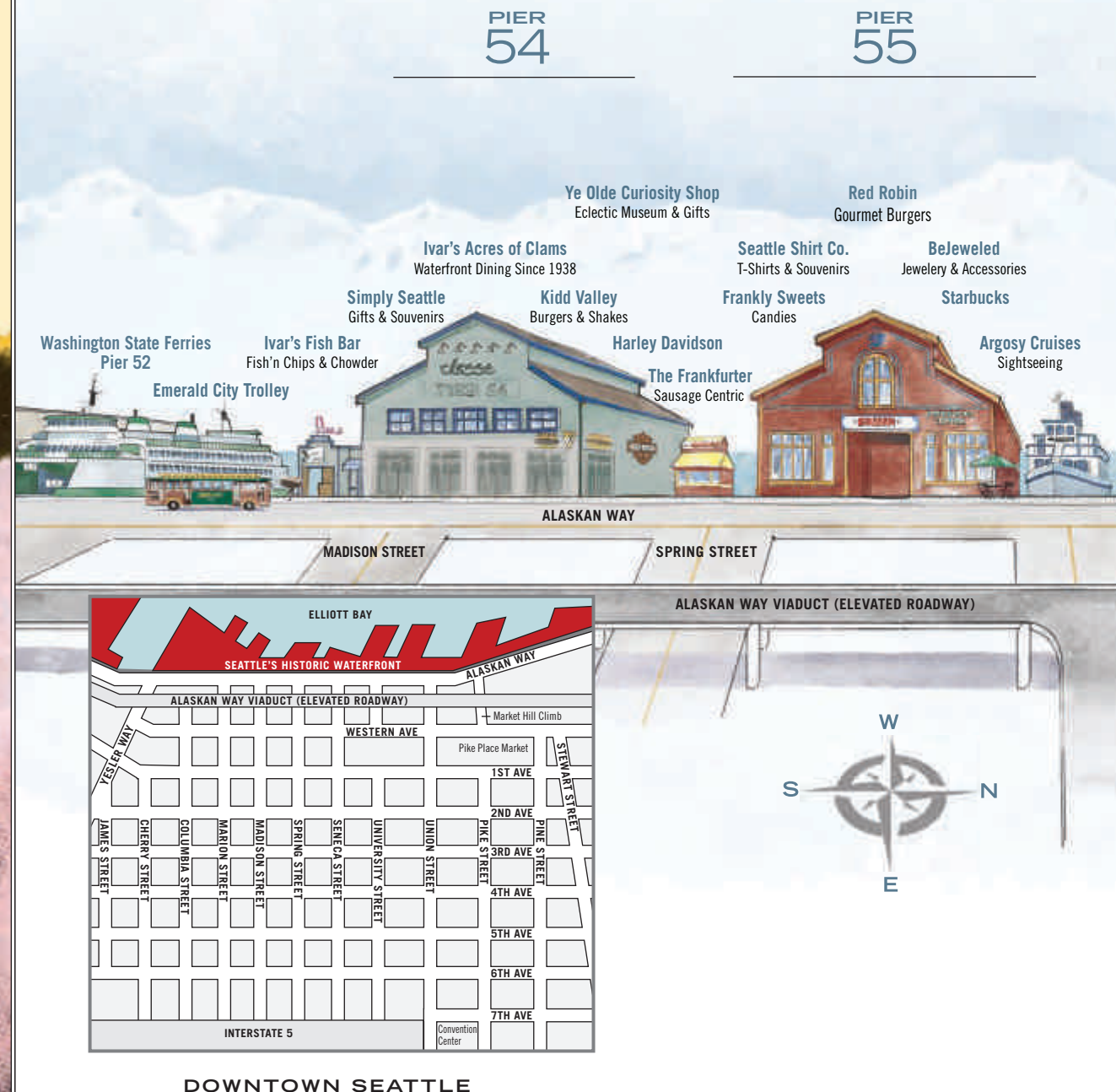
Tickets: 614 1st Ave, 206 682 4646,  
[undergroundtour.com](http://undergroundtour.com)

Inquire About Cost-Saving Private Tours and Special Events

## Visit Seattle's Waterfront

Unique Retail | Fresh Seafood | Breathtaking Views | Fun Activities

SEATTLE'S HISTORIC WATERFRONT- PIERS 54-60





# December

Where Seattle

## CONTENTS

### IN EVERY ISSUE

- 4 PUBLISHER'S NOTE
- 9 ASK THE EXPERT
- 64 THE FIX

### WHERE NOW

#### 10 TOP 5

Fun ways to sync with the city.

#### 12 CALENDAR

Performances, festivals and one-of-a-kind events: See what we're looking forward to this month.

#### 16 INSIDER

Local jewelry and accessories, independent cinemas and Seattle's tiki bar boom.

#### 22 ONE BLOCK. ONE DAY.

Eat, shop, drink and explore around King Street in the Chinatown-International District.

### FEATURES

#### 24 CELEBRATE THE SEASON

Our guide to Seattle's can't-miss holiday events.

#### 26 CRAZY FOR COFFEE

Navigating Seattle's caffeine scene.

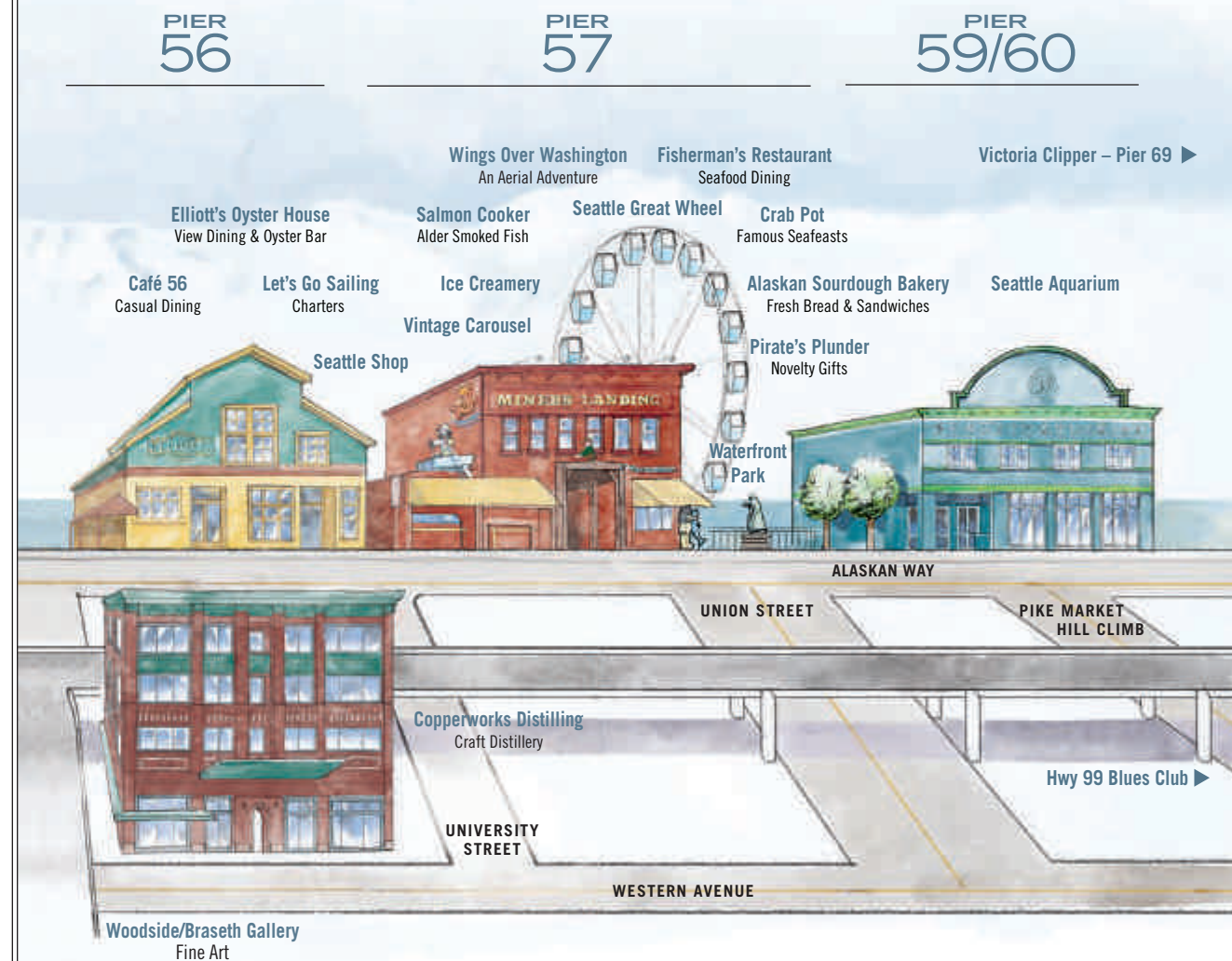
### THE GUIDE

- 30 Shop 48 Food
- 38 Sights 58 Scene
- 42 Explore 61 Maps
- 46 Art

**ON THE COVER** Pacific Northwest Ballet PNB School student Eden Anan as Clara in "George Balanchine's The Nutcracker" ©Angela Sterling.

©PACIFIC SCIENCE CENTER

Seattle's Historic Waterfront has two dozen restaurants, shops, and amusements stretching out in full view of Elliott Bay. It's a classic promenade for visitors and locals alike. Since it's located at the edge of downtown, it's an easy walk from Seattle's hotels. You can occupy yourself for a half-hour to a week without going too far out of your way. Don't miss out on this opportunity to experience authentic Northwest culture before the viaduct comes down!



[DowntownSeattle.com/Waterfront](http://DowntownSeattle.com/Waterfront)



Pacific Science Center's annual New Year's Eve event, Spectra



# EDITOR'S NOTE

December 2017

## #SeizeTheStay

Bill Speidel's Underground Tour is one of my favorite things to do when out-of-town guests visit. It's a fascinating look at Seattle history. Even those who aren't the "tour type" love it! [wheretraveler.com/seizethestay](http://wheretraveler.com/seizethestay)

connect with us



**Tradition is an important** part of the holiday season. Whether we celebrate by taking in a tree-lighting ceremony, visiting Santa Claus, attending a concert of traditional holiday tunes, lacing up our ice skates or going out for Chinese food and a movie, these beloved rituals give us all something to look forward to as the year draws to an end. Seattle's social calendar is packed with a wide range of highly anticipated events that keep locals coming back year after year, and we're happy to share some of the best of them with you in this issue. Who knows—maybe this visit will be the start of new holiday tradition for you!

*L. Hale*

Lara Hale  
Editor, Where Seattle

**where IN THE WORLD** Where is an international network of magazines first published in 1936 and distributed in over 4,000 leading hotels in more than 50 places around the world. Look for us when you visit any of the following cities, or plan ahead for your next trip by visiting us online at [wheretraveler.com](http://wheretraveler.com).

**UNITED STATES** Alaska, Atlanta, Baltimore, Boston, Charleston, Charlotte, Chicago, Dallas, Indianapolis, Jacksonville/St. Augustine/Amelia Island, Las Vegas, Los Angeles, Maui, Miami, Minneapolis/St. Paul, New Orleans, New York, Oahu, Orange County (CA), Orlando, Philadelphia, Phoenix/Scottsdale, San Diego, San Francisco, Seattle, St. Louis, Tampa, Tucson, Washington, D.C.  
**ASIA** Hong Kong, Macau, Singapore  
**AUSTRALIA** Brisbane, Melbourne, Sydney  
**CANADA** Calgary, Canadian Rockies, Edmonton, Halifax, Muskoka/Parry Sound, Ottawa, Toronto, Vancouver, Victoria, Whistler, Winnipeg  
**EUROPE** Berlin, Budapest, Istanbul, London, Madrid, Milan, Moscow, Paris, Rome, St. Petersburg

**FOR ME, THERE'S NO BETTER** way to get into the spirit of the holidays than an evening at Snowflake Lane. Every night in December at 7 p.m., the street outside The Bellevue Collection becomes a seasonal spectacle of live toy soldier drummers, exhilarating music, animated snow characters and glittering lights beneath falling snow along Bellevue Way, between NE Fourth and Eighth streets. It's become an annual tradition for me and my son, and deserves a spot on everyone's must-do list this month.

*Dane Hjort*  
Dane Hjort  
Publisher, Where Seattle



COURTESY THE BELLEVUE COLLECTION

MoPOP

MUSEUM OF POP CULTURE

The Jim  
Henson

Exhibition

Imagination  
Unlimited

OPEN NOW

MoPOP.org





**SAVE 45% OR MORE**

**SEATTLE'S 5 TOP  
ATTRACTIONS**

— BUY HERE —

Space Needle

Seattle Aquarium

Argosy Cruises Harbor Tour

Museum of Pop Culture (MoPOP)

OR

Woodland Park Zoo

OR

Chihuly Garden and Glass

Pacific Science Center

**98% RECOMMEND CityPASS  
VALID 9 DAYS**

SEATTLE  
**CityPASS**

[citypass.com](http://citypass.com)

Savings based on adult pricing.  
Program, pricing and discounts subject to change;  
visit [citypass.com](http://citypass.com) for current details.

YOUR TRAVELING COMPANION SINCE 1936®

**where**  
SEATTLE

Member of the **M** Morris Media Network

PUBLISHER **Dane Hjort**  
EDITOR **Lara Hale**

ADVERTISING & CIRCULATION  
ADVERTISING SALES MANAGER **Julann Hill**  
BUSINESS ADMINISTRATOR **Megan Simmons**

EDITORIAL & DESIGN  
ART DIRECTOR **Dusty Martin**  
CONTRIBUTING EDITORS **Taylor Clayton,**  
**Gillian Glover, Jasmine Hu**

**MORRIS VISITOR PUBLICATIONS**

MVP | EXECUTIVE  
PRESIDENT **Donna W. Kessler**  
CHIEF FINANCIAL OFFICER **Dennis Kelly**  
VICE PRESIDENT, AUDIENCE **Kurt Caywood**  
VICE PRESIDENT, OPERATIONS **Angela E. Allen**  
VICE PRESIDENT, INTERNAL BUSINESS DEVELOPMENT  
**Karen Rodriguez**  
REGIONAL VICE PRESIDENT, SALES **Courtney Fuhrmann**  
DIRECTOR OF CIRCULATION **Scott Ferguson**  
NATIONAL MARKETING MANAGER **Melissa Blanco**

MVP | CREATIVE  
CHIEF CREATIVE OFFICER **Haines Wilkerson**  
SENIOR REGIONAL EDITORIAL DIRECTOR **Margaret Martin**  
DESIGN DIRECTOR **Jane Frey**  
DIRECTOR OF PHOTOGRAPHY **Isaac Arjonilla**  
CREATIVE COORDINATOR **Beverly Mandelblatt**

MVP | NATIONAL SALES  
VICE PRESIDENT, NATIONAL INTEGRATED SALES **Rebekah Valberg**  
VICE PRESIDENT, NATIONAL MARKETING **Adeline Tafuri Jurecka**  
SENIOR DIRECTOR OF DIGITAL OPERATIONS **Bridget Duffie**  
DIRECTOR OF NATIONAL SALES **Liza Meneades**  
MANAGER, NATIONAL INTEGRATED SALES **David Gately**

MVP | PUBLICATION SERVICES  
PUBLICATION SERVICES DIRECTOR **Kris Miller**  
PUBLICATION SERVICES MANAGER **Mickey Kibler**  
DIGITAL IMAGING **Erik Lewis**

MVP | MANUFACTURING & TECHNOLOGY  
DIRECTOR OF MANUFACTURING **Donald Horton**  
TECHNICAL OPERATIONS MANAGER  
**Tony Thorne-Booth**

E-mails for all of the above except contributors:  
[firstname.lastname@morris.com](mailto:firstname.lastname@morris.com)

**MVP**  
Morris Visitor Publications

MVP | SEATTLE  
1904 3rd Ave., Ste. 623, Seattle, WA, 98101  
206.826.2665, 206.826.2676 (fax)

MORRIS COMMUNICATIONS  
CHAIRMAN **William S. Morris III**  
PRESIDENT & CEO **William S. Morris IV**  
CHIEF OPERATING OFFICER **Derek J. May**

[wheretraveler.com](http://wheretraveler.com)

Where® magazine is produced by Morris Visitor Publications (MVP), a division of Morris Communications Co., LLC, 725 Broad St., Augusta, GA 30901, [morrismedianetwork.com](http://morrismedianetwork.com). Where magazine and the Where® logo are registered trademarks of Morris Visitor Publications. Where makes every effort to ensure the accuracy of the information it publishes, but cannot be held responsible for any consequences arising from errors or omissions. All rights reserved. Reproduction in whole or in part strictly prohibited.

# underground paranormal experience

Don't Watch Ghost Hunters.  
Be One.

The Underground Paranormal Experience gives you the expertise and equipment to do your own investigation. You experience what trained paranormal investigators face—in Seattle's notorious Underground!

Tickets: 614 1st Ave, 206 682 4646,  
[undergroundparanormalexperience.com](http://undergroundparanormalexperience.com)

Inquire about cost-saving private investigations and special events

A Hands-On, Lights-Off Attraction

Brought to you by the Underground Tour





## #SeizeTheStay

Tag your favorite travel tips & photos on Instagram & Twitter with #SeizeTheStay —we'll reshare the best!

**wheretraveler.com**

## ASK THE EXPERT

*Dustin Boast*

CEO, SEATTLE BEER COMPANY

*"I've been to more than 900 breweries; Seattle is one of the best cities in America for beer."*



**Q: Why did you start Seattle Beer Company?**

**A:** There are so many great beers from Washington state; I wanted to create a fun, unique place that focused on just them. It's also an extension of my Road Dog Brewery Tours (road-dogtours.com), allowing us to give more people a great Seattle craft beer experience.

**Q: How do you think Seattle's beer scene compares to other cities?**

**A:** I've been to more than 900 breweries around the United States, and Seattle is one of the best cities for beer. It helps that we grow more than 75 percent of the nation's hops in Washington, so we get the best for IPAs and more. As well as a good way to cope with rainy days.

**Q: What are some of your favorite local beers to drink during the winter?**

**A:** So hard to pick! A few new goodies are Georgetown Brewing Company's Bodhizafa IPA and their Gusto Crema Coffee Ale. Hellbent's Moon Tower Stout on Nitro, Bad Jimmy's

Brewing Co.'s Habanero Amber, and Outlander's Peanut Butter Chocolate Stout are also good winter beers.

**Q: Aside from breweries, where do you take friends when they visit Seattle?**

**A:** I love going to the Ballard Locks to watch the various boats and ships pass through—if you visit during the right time of year [summer to fall, or late spring, depending on the species], the Fish Ladder is a great place to see live salmon swim by the window in the underwater viewing area. Also I enjoy the Klondike Gold Rush Museum in Pioneer Square, as I think it gives a great perspective of how the city of Seattle got put on the map, long before the tech boom.

**BOTTOMS UP**  
**Zig Zag Café behind Pike Place Market is an awesome spot for cocktails with a chill vibe. I can't always drink beer!**

COURTESY DUSTIN BOAST



# ANDREW WYETH

IN RETROSPECT

**100 works. 100 years. An American icon.**

**On view through January 15 | Get tickets at [visitsam.org](http://visitsam.org)**

*Andrew Wyeth: In Retrospect* is co-organized by the Brandywine River Museum of Art and Seattle Art Museum, and is supported by an indemnity from the Federal Council on the Arts and Humanities.

Special exhibitions at SAM are made possible by donors to

**SAM FUND FOR SPECIAL EXHIBITIONS**

Presenting Sponsors

ARTSFUND

Microsoft

Lead Sponsors

DELTA

4 CULTURE

Major Sponsors

Christie's National Endowment for the Arts

Additional Support  
American Art Endowment Fund  
Contributors to the SAM Fund  
Four Seasons Hotel Seattle  
Terra Foundation for American Art

**SAM** SEATTLE ART MUSEUM

*Day of the Fair* (detail), 1963, Andrew Wyeth, 1917–2009, drybrush and watercolor, 14 7/8 x 19 3/4 in., © 2017 Andrew Wyeth / Artist Rights Society, St. Louis Museum of Fine Arts.



DECEMBER 2017

# WHERE NOW

An **explorer's guide** to what's trending in the city

SEATTLE

## TOP 5

*Ways to Connect*

1

### Take a Hike

Get out and embrace the winter wonderland at Snoqualmie Falls, 30 minutes east of Seattle. [snoqualmiefalls.com](http://snoqualmiefalls.com)

2

### Be a Winemaker

Sip, swirl and blend your own bottle of wine to take home at Chateau Ste. Michelle. [ste-michelle.com](http://ste-michelle.com)

3

### Lock and Learn

Watch ships of all sizes pass through the Hiram M. Chittenden Locks in Ballard. [ballardlocks.org](http://ballardlocks.org)

4

### Sing Along

Belt out some of your favorite songs with friends at Capitol Hill karaoke bar Rock Box. [rockboxseattle.com](http://rockboxseattle.com)

5

### Have a Nosh

Savor a latke sandwich from the roving Napkin Friends food truck for Hannukah. [napkinfriends.com](http://napkinfriends.com)

JOECHO-16/ISTOCK





## WHERE NOW

# CALENDAR

*December at a Glance*

December 8-10

## Holiday Pops

Conductor Stuart Chafetz leads the Seattle Symphony and the University of Washington Chorale for an evening of holiday standards that capture the joy and warmth of the season (think Bing Crosby, Nat King Cole, Johnny Mathis and the like). Vocalists Rachel York and Darius de Haas will also lend their talents to the performance at fully decked-out Benaroya Hall. Cap the evening off with cocktails and nibbles during late-night happy hour at pan-Asian favorite Wild Ginger, just across the street. [seattlesymphony.org](http://seattlesymphony.org)

December 2

## The Great Figgy Pudding Caroling Competition



Head to Westlake Park for a fun, festive and not-so-silent night, when dozens of caroling teams will compete for top honors. The event is free, but donations to Pike Market Senior Center & Food Bank are appreciated. [pikeplacemarket.org](http://pikeplacemarket.org)

©BRANDON POTOC/SEATTLE SYMPHONY, COURTESY PIKE MARKET SENIOR CENTER AND FOOD BANK



December 25

## "Fiddler on the Roof"

Tradition, tradition! Singing along with Tevye and the rest of the cast at SIFF Cinema Uptown's annual Christmas Day screening of the beloved 1971 musical set in pre-revolutionary Russia has become just that for many Seattleites. Audience participation is encouraged, and the film will be preceded by a free klezmer concert, plus complimentary (and kosher) Chinese food. [siff.net](http://siff.net)

December 1-2

## Winter Beer Festival

Offering the chance to sample from more than 50 local breweries, this tasting event at Magnuson Park is hosted by and benefits the Washington Brewers Guild. Expect plenty of winter warmers, such as robust stouts and barrel-aged gems. Food trucks will be on site for your noshing needs. [washingtonbrewersguild.org](http://washingtonbrewersguild.org)



December 1-3

## Urban Craft Uprising

Seattle's largest indie craft show, now in its 13th year, brings crafters and makers from all over the Northwest to the Exhibition Hall at Seattle Center for a weekend of holiday shopping, sampling and fun. Tickets are limited for the Friday night preview event. [urbancraftuprising.com](http://urbancraftuprising.com)



©HELEN MURRAY, COURTESY PIKE PLACE MARKET; FAIRMONT OLYMPIC HOTEL





SHOP

# STOCKING UP

*The perfect places to shop for stocking stuffers.*

**SEATTLE-BASED MOOREA SEAL** is more than a jewelry designer, she's the stylish entrepreneur behind the growing lifestyle brand that carries her name. Seal started making a name for herself as an early pioneer of Pinterest, and it wasn't long before the eye-catching mood boards she created earned her an impressive following. She parlayed her reputation as a tastemaker into a successful online boutique, and later a brick-and-mortar shop. This fall, Seal moved her trove of treasures into new digs in trendy Pioneer Square. In the bright and airy new space, devotees of Seal's style aesthetic can shop for gifts from her own line of jewelry, stationery collection and "52 Lists" journals, as well handpicked fashion and home accessories from other up-and-coming and established designers. 1012 First Ave., Suite 150; 206.728.2523; mooreaseal.com



**Baleen**

The simple but beautiful jewelry is designed and created in the studio of this Ballard boutique. [shopbaleen.com](http://shopbaleen.com)

**Sassafras**

This Belltown shop stocks clothing, jewelry and accessories exclusively from Pacific Northwest designers. [sassafras-seattle.com](http://sassafras-seattle.com)

**Nube**

Carefully curated U.S.-made jewelry, accessories and home goods line the shelves at this chic Capitol Hill spot. [nubegreen.com](http://nubegreen.com)

For more great **shopping** in the city visit [wheretraveler.com](http://wheretraveler.com)

©MOOREA SEAL, BALEEN



EXPLORE

# SCREEN TIME

*Seattle's independent cinemas offer the perfect escape.*

**AFTER A BUSY DAY** of sightseeing, sometimes all you want to do is kick back and unwind. Luckily, Seattle is home to a number of fantastic independent movie theaters where you can do just that. Catch cult favorites, old-school Hollywood classics and special sing-along and "hecklevision" screenings at Central Cinema in the Central District. Be sure to save some appetite for more than the usual popcorn and candy: You can order artisan pizzas, juicy burgers and gourmet entrées delivered right to your seat, along with craft cocktails, wine and local beers. After the credits roll, make yourself at home in the cinema's cozy Café Noir for fresh-baked desserts and coffee or a nightcap while you discuss the movie or play a game of Scrabble. 1411 21st Ave., 206.328.3230, [central-cinema.com](http://central-cinema.com).

COURTESY CENTRAL CINEMA; SIFF



**SIFF Cinemas**

Seattle International Film Festival's three theaters screen arthouse and classic flicks year-round. [siff.net](http://siff.net)

**Cinerama**

Retro cool meets cutting-edge tech in this restored midcentury cinema, which features the biggest blockbusters and movie memorabilia. [cinerama.com](http://cinerama.com)

**Big Picture**

The first West Coast cinema to serve cocktails has been a favorite spot for movies and martinis for 18 years. [thebigpicture.net](http://thebigpicture.net)

For more great **shopping** in the city visit [wheretraveler.com](http://wheretraveler.com)





## DRINK

## TIKI TIME

*Shake off the wintry weather with a taste of the tropics.*

**BOUYED BY THE ISLAND SPIRIT** that GIs found in the South Pacific and the rise of affordable air travel to the tropics, the tiki culture craze first swept the nation back in the 1950s. Thanks to Seattle's relative proximity to Hawaii—and perhaps our occasional need to escape the drizzly days—it's never really disappeared here. But with tiki emerging as a coast-to-coast cocktail trend over the last few years, it's no surprise Seattle has had some newcomers pop up too. In Ballard, sip on classic concoctions at Hotel Albatross ([hotelalbatross.com](http://hotelalbatross.com)) or head to No Bones Beach Club ([nobonesbeachclub.com](http://nobonesbeachclub.com)), where mai tais and more are served along with smoked golden beet poke, jackfruit flautas and other island-inspired vegan grub that even carnivores will love. Navy Strength ([navystrengthseattle.com](http://navystrengthseattle.com)), the new Belltown tiki bar from Seattle cocktail power couple, Chris and Anu Elford, is not to be missed.

### Classic Spots for Vacations in a Glass

**Ohana**

A Belltown staple since 1999 with tropical drinks, tasty Hawaiian and Japanese fare and an old-school island vibe. [ohanabelltown.com](http://ohanabelltown.com)

**Sun Liquor Lounge**

A Capitol Hill staple since 2006, tropical drinks made with the distillery's own liquors are served daily, but the first-Tuesday tiki nights are especially popular. [sunliquor.com](http://sunliquor.com)

**Hula Hula**

Established in 2006, this popular hangout's new location on Capitol Hill has kitschy bamboo decor, flaming cocktails, pub grub and karaoke 365 nights a year. [hulahula.org](http://hulahula.org)

For more great **drinks** in the city visit [wheretraveler.com](http://wheretraveler.com)

CLOCKWISE: SUN LIQUORS; OHANA; SUN LIQUORS; HULA HULA



## WALLINGFORD CENTER

LIFE'S NECESSITIES & LITTLE LUXURIES

LOCAL  
•  
SMALL  
•  
INDEPENDENT

OUR SHOPS  
& SERVICES

Bad Woman Yarn

Bootyland Kids

Chutneys Bistro

Crackerjack Contemporary Crafts

L'il Klippers & The Edge Hair Salons

Peti Boutique

Pharmaca Integrative Pharmacy

Richard's Artistic Framing

The Exploration Academy (TEA) Preschool

Trophy Cupcakes and Party

Tweedy & Popp True Value Hardware

Yazdi & Yazdi II

OPEN DAILY  
FREE PARKING

1815 N 45th St.  
Seattle, WA 98103  
[wallingfordcenter.com](http://wallingfordcenter.com)



FOLLOW US!





WHERE NOW

# #whereseattle

EXPLORING THE **MUSEUM OF POP CULTURE**, THROUGH YOUR LENS

• @lisatraaann Becoming a borg #mopop



• @cameronjebo BEAKER!!! My favorite Muppet (don't tell Swedish Chef) @mopopseattle #JimHenson exhibit! #muppets #seattle #MoPop



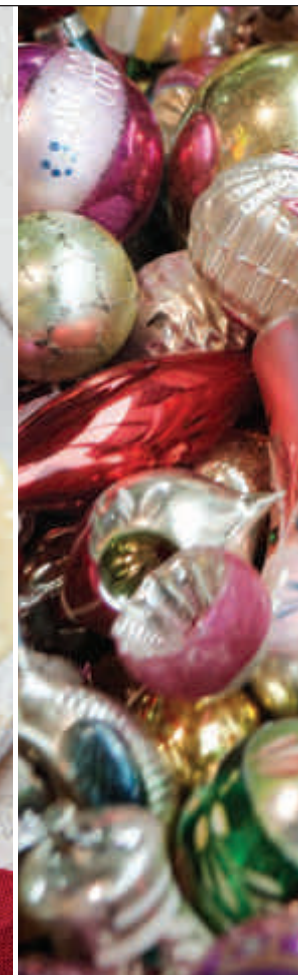
• @eriicccaaaa Coffins are cozy  
#seattle #mopop #thriller #explore  
#sundayfunday #girlsday



• @yuyuvizzuett #mopop #seattle #havingfun



Snap a great moment in **Seattle**, and tag it on Instagram with **#whereseattle** for a chance to appear in an upcoming issue.



## SEASONAL EXHIBITS FOR YOUR PALETTE

This holiday season, enjoy artistically inspired dishes crafted from local ingredients, and see the personal story of Dale Chihuly through his collections.

**LUNCH / HAPPY HOUR / WEEKEND BRUNCH**

COLLECTIONSCAFE.COM  
LOCATED AT CHIHULY GARDEN AND GLASS  
305 HARRISON ST / SEATTLE WA  
206.753.4935

COLLECTIONS  
**CAFÉ**



WHERE NOW

# ONE BLOCK. ONE DAY.

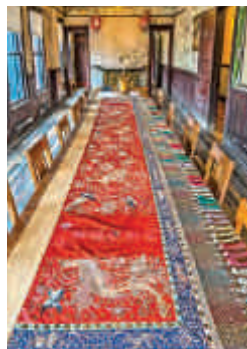
MUST-STOP SPOTS AROUND **SOUTH KING STREET** IN THE CHINATOWN-INTERNATIONAL DISTRICT

## Eat

Try Hawaiian-style fresh fish and rice bowls at one of the area's newest spots, goPoké, or head to Tai Tung, the longest-running Chinese restaurant in Chinatown. (Bruce Lee was a big fan.) The dim sum at Harbor City is beloved by locals, and worth the wait. Explore Cambodian cuisine at Phnom Penh Noodle House, Japanese gastropub fare and shochu cocktails at Kaname Izakaya, or grab a slice at World Pizza. Whatever you choose, save room for tasty Japanese-French treats at Fuji Bakery.

■ **goPoké** 625 S King St., 206.799.9560, gopokeatlanta.com  
■ **Tai Tung** 655 S King St., 206.622.7372, taitungrestaurant.com  
■ **Harbor City** 707 S King St., 206.621.2228  
■ **Phnom Penh Noodle House** 660 S King St., 206.748.9825, phnompenhnoodles.com  
■ **Kaname Izakaya** 610 S Jackson St., 206.682.1828, kaname-izakaya.com  
■ **World Pizza** 672 S King St., 206.682.4161, worldpizza.tumblr.com  
■ **Fuji Bakery** 526 S King St., 206.623.4050, fujiibakeryinc.com

Clockwise: Fresh and delicious fare from goPoké; Hing Hay Park; items from the gift selection at Uwajimaya; a look at local Asian American history at the Wing Luke Museum.



## Explore

Don't miss the Wing Luke Museum for thoughtful art and cultural exhibits, plus special neighborhood tours that focus on topics like food or Bruce Lee. Afterwards, go flip out at the Seattle Pinball Museum or see what's happening at Hing Hay Park, a popular community gathering spot.

■ **Wing Luke Museum of the Asian Pacific American Experience** 719 S King St., 206.623.5124, wingluke.org  
■ **Seattle Pinball Museum** 508 Maynard Ave. S, 206.623.0759, seattlepinballmuseum.com  
■ **Hing Hay Park** 423 Maynard Ave. S, seattle.gov

## Shop

No visit to the neighborhood would be complete without a visit to grocery and gifts superstore Uwajimaya. The family-owned business started in 1928, as a modest set-up in the back of a truck. Today, the 35,000-sf. flagship Seattle store is perfect for browsing and discovering new tastes from all over Asia, from fresh fish to candy, and also includes a department of homewares, toys and accessories.  
■ **Uwajimaya** 600 Fifth Ave. S, 206.624.6248, uwajimaya.com

For more things to do in **Chinatown** go to [wheretraveler.com](http://wheretraveler.com)

COURTESY GOPOKÉ; UWAJIMAYA; SEATTLE PARKS; WING LUKE MUSEUM

ALMOST CLASSY

# LOWELL'S

SINCE 1967

## DAYS AND NIGHTS BEGIN HERE

### IN THE HEART OF PIKE PLACE MARKET

Start your day with one of our fresh Pacific Northwest breakfasts, paired with one of our hand-crafted, house-infused eye-openers. Can't join us for breakfast? Jump-start your evening at Lowell's. Catch the sunset over Elliot Bay with a spirited cocktail and savory dinner before the theatre, art walk, or pre-game. We celebrate 60 years as Seattle's local favorite secret hideaway. Join us for our diamond anniversary and enjoy 3 floors of friendly staff and service with something for everyone from 7<sup>AM</sup> to close!



San Juan Combo:  
Smoked Salmon and  
Dungeness Crab Benedict

Homemade  
Kimchi  
Bloody Mary

[eatatlowells.com](http://eatatlowells.com)





# Celebrate the Season

Our guide to Seattle's can't-miss holiday events.

**CELEBRATIONS ABOUND** in Seattle and beyond during these busy holiday months. From incredible light displays to indoor snow showers, the magic of the season is everywhere.

## LIGHTS FANTASTIC

The Emerald City sparkles during the holidays with twinkling light displays dotted around. During WildLights at Woodland Park Zoo ([zoo.org](http://zoo.org); 5:30-8:30 p.m. nightly through 1/1), creative displays using more than 600,000 LED lights, carousel rides, faux snowball fights and visits with Santa and his reindeer.

Enjoy holiday favorites from local caroling groups and other performers as you stroll through a winter wonderland of more than half-a-million lights during Garden d'Lights at the Bellevue Botanical Garden ([gardendlights.org](http://gardendlights.org); 4:30-9 p.m. through 12/31).

Naturally, one of Seattle's best-loved light displays takes place on the water. A quintessential tradition for almost 70 years, the Argosy Christmas Ship Festival ([argosycruises.com](http://argosycruises.com); through 12/23) is a parade of illuminated and decorated boats that makes two stops each night at more than 45 locations along Puget Sound. Crowds gather at the waterfront to await the ship and its onboard choir, which serenades the shore with 20-minute performances. Book a place on the lead Christmas Ship or one of the follow boats for festive extras like sing-a-longs, a gift shop and holiday-themed drinks. Or, head to a waterfront stop to await the ship by a crackling bonfire.

## CENTER STAGE

Beloved ballets, festive musicals and even quirky cabaret shows are all hot tickets this time of year.

For some, it just wouldn't be Christmas without seeing Clara twirl her way through the magical Land of Sweets. Don't miss the chance to be dazzled by the Pacific Northwest Ballet's "George Balanchine's The Nutcracker" at McCaw Hall ([pnb.org](http://pnb.org); through 12/28). Little ones will especially love the DIY cupcake bar and costumed characters in the "Nutcracker Suite" during the intermission.

On the other hand, adults might be tempted by "Land of the Sweets: The Burlesque Nutcracker" ([tripledoor.net](http://tripledoor.net); 12/7-28)

a cabaret-style take on the classic tale that packs The Triple Door, a cozy dinner theatre near Pike Place Market every year.

For more zany merriment, check in to "Irving Berlin's Holiday Inn" at the 5th Avenue Theatre ([5thavenue.org](http://5thavenue.org); through 12/31). This is the West Coast premiere of the recent Broadway hit, which features lavish costumes and sets and 20 Berlin songs.

Don't be a scrooge: Take the whole family to ACT's production of Charles Dickens' "A Christmas Carol" ([acttheatre.org](http://acttheatre.org); through 12/28) for a reminder of the true meaning of the season.

## SANTA AND OTHER SPECTACLES

Old Saint Nick keeps very busy this time of year. Before his big night of present delivery, he makes several stops around the city.

Ooh and ahh over twice-nightly indoor snow showers and tap your toes to live musical performances in the atrium at Pacific Place ([pacificplaceseattle.com](http://pacificplaceseattle.com); through 12/24) while you wait for your chance to chat with the jolly old man himself.

You wouldn't want to sit on Santa's lap when he visits the Seattle Aquarium ([seattleaquarium.org](http://seattleaquarium.org); noon and 3 p.m. every Saturday, Sunday and Monday through 12/24) because it'll be pretty soggy! Watch him dive and swim through one of the giant tanks and stick around for enjoy special holiday concerts.

Seattle Center ([seattlecenter.com](http://seattlecenter.com)) buzzes with holiday activity during this month's Winterfest. Ongoing attractions include a model train wending its way through a charming wintry village, ice-sculpture carving, Victorian-costumed carolers and an ice skating rink. It wraps up on New Year's Eve with a fireworks display at the Space Needle.

The annual Gingerbread Village display ([gingerbreadvillage.org](http://gingerbreadvillage.org); through 1/1) at City Center features sugary structures created by the Sheraton Seattle's culinary team and top local architecture firms. The event is free, but donations to the Northwest Chapter of the Juvenile Diabetes Research Foundation are appreciated.



## BE DAZZLED

(Opposite) PNB's "George Balanchine's The Nutcracker." (From top) Woodland Park Zoo; Westlake Park; "Irving Berlin's Holiday Inn" at the 5th Avenue Theatre

OPPOSITE: ©ELISE BAKKETUN/PACIFIC NORTHWEST BALLET; THIS PAGE, FROM TOP: ©JEREMY DWYER/WOODLAND PARK ZOO; COURTESY SEATTLE PARKS AND RECREATION; 5TH AVENUE THEATRE



# Crazy for Coffee

From pour-overs to espresso, Seattleites are fanatical about their coffee. Find out what the buzz is all about with our guide to the city's best cups.

The stereotype of Seattleites as coffee-obsessed is well founded—there are more than 1,650 coffee shops in the city. Here's how to navigate the local scene and find your favorite java joint.

## CUP BY CUP

Want to learn more about coffee, but not sure where to start? Try a local tour.

Seattle By Foot's Original Coffee Crawl (206.508.7017, [seattlebyfoot.com](http://seattlebyfoot.com)) is a 2.5-hour walking tour of some of the city's most instrumental coffee houses. Along the way, you'll learn about different bean varieties, roasting and brewing techniques and the history of Seattle's caffeine scene.

If you prefer to save your energy for tasting, let Road Dog Tours (206.249.9858, [roaddogtours.com](http://roaddogtours.com)) transport you from roastery to roastery. Over the course of two hours, you'll visit three very different shops

around downtown, learn about their processes and philosophies about what makes the perfect cup.

## DIGGING DEEPER

If you're a true coffee geek, a DIY approach will give you more time to savor each sip.

Enter coffee "cupping," the process the pros use to evaluate coffee. The technique is similar to a wine tasting: The aroma of dry, ground beans is noted, and after heated water is added to brew the coffee, a crust forms. The aroma is noted again when tasters carefully break the crust. Finally, they slurp coffee from a tasting spoon, making sure to let the liquid hit every part of the tongue. See what all the buzz is about at Victrola Roastery & Cafe (310 E Pike St., 206.624.1725, [victrolacoffee.com](http://victrolacoffee.com)). The Capitol Hill favorite, housed in a former car showroom built in the 1920s, hosts free

*Coffee is a lifestyle in Seattle, so it's no surprise that locals find ways to combine drinking it with some of their other passions.*

public cuppings each and every Wednesday at 11 a.m.

Visiting a Starbucks café in the city where the global phenomenon started is almost mandatory. Although the quaint original location in Pike Place Market makes for a great photo opp, aficionados shouldn't miss the Starbucks Reserve Roastery & Tasting Room on Capitol Hill. Watch the coffee process, from green beans transferred into roasters through clear tubes in the ceiling to a barista creating your perfect cup with any one of a number of brewing methods. In addition to offering the brand's usual standbys, the Roastery serves as a proving ground for new drinks in development and offers a range of beverages you won't find in other locations. The gorgeous space offers plenty of cozy seating, but those in the know grab a spot at the Experience Bar to linger over siphoned-brewed beverages.

Further up the hill, Capitol Coffee Works (907 E Pike St., 206.340.8867, [seattle-coffeeworks.com](http://seattle-coffeeworks.com)) goes beyond the bean with items that are made with cascara, the coffee berry, which is usually discarded during processing. Cascara has a unique fruity flavor with notes of hibiscus, cherry, rose hips and even tobacco that comes through deliciously in the café's sparkling Cascara soda and housemade chocolates.

## ADDED PERKS

Coffee is a lifestyle in Seattle, so it's no surprise locals want to combine drinking it with some of their other passions.

Independent radio station KEXP has long played a huge part in Seattle's vibrant music scene, and draws fans from all over the world. Its public space in Seattle Center offers the chance to peek into the DJ booth, catch live performances and enjoy coffee at the country's only La Marzocco Café (472 First Ave. N, 206.388.3500, [lamarzoccousa.com](http://lamarzoccousa.com)). The Seattle headquarters

of the esteemed Italian espresso machine manufacturers offers regular events, such as coffee and food pairing tastings and brewing technique workshops.

Music lovers should also check out Porchlight Coffee & Records (1517 14th Ave., 206.329.5461, [porchlightcoffee.com](http://porchlightcoffee.com)) where coffee provides the fuel to plow through the extensive selection of new and used vinyl. The shop serves local favorite Herkimer Coffee, vegan treats from Mighty-O Donuts—and as if that wasn't enough, Porchlight also has its own record label.

Bookish-types abound in Seattle, recently named an official UNESCO City of Literature, and Elliott Bay Book Company in Capitol Hill is where many feed their need to read. Its onsite café, Little Oddfellows (1521 Tenth Ave., 206.323.1511, [oddfellows-cafe.com](http://oddfellows-cafe.com)), serves locally roasted coffee, paninis and cakes, making it the perfect spot to take a break between browsing.

## BEST OF BOTH BREWS

Coffee isn't Seattle's only brew. Craft beer is big here, and many local breweries are combining the city's favorite liquid vices. A few to try are the Jive Espresso Stout from Two Beers Brewing Co. (4700 Ohio Ave. S, 206.762.0490, [twobeersbrewery.com](http://twobeersbrewery.com)); the winter-only release Breakfast Stout from Reuben's Brews (5010 14th Ave. NW, 206.784.2859, [reubensbrews.com](http://reubensbrews.com)); and the limited-edition Pike Vita blonde coffee ale, a collaboration between two Seattle favorites, Caffé Vita and the Pike Brewing Company (1415 First Ave., 206.622.6044, [pikebrewing.com](http://pikebrewing.com)), available only on draft.

Not to be outdone, Seattle Distilling (19429 Vashon Hwy SW, 206.463.0830, [seattledistilling.com](http://seattledistilling.com)) produces its own heady concoction. Try the Coffee Liqueur, made with the distillery's handcrafted vodka and Vashon Island Coffee Roasterie's Orca roast at the Vashon Island tasting room, open Thursday through Sunday only.

## SIP AND SAVOR

(Opposite) Taking it slow at the Experience Bar in Starbucks Reserve Roastery and Tasting Room. (From top) Processing beans at Victrola; coffee from La Marzocco, located inside KEXP radio station; Capitol Coffee Works' Cascara Fizz.

COURTESY STARBUCKS

©MELISSA SHAW PHOTOGRAPHY/VICTROLA COFFEE; LA MARZOCCO CAFE; SEATTLE COFFEE COMPANY





# HOLIDAY GIFT GUIDE

Share a bit of Seattle with your loved ones this season with these picks from the Emerald City.

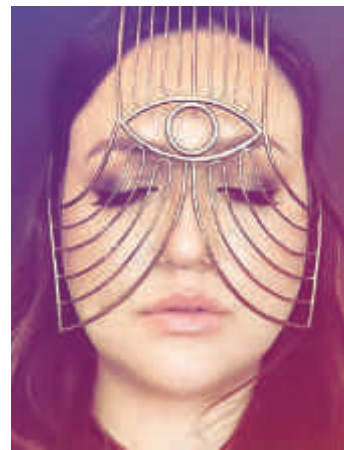
## STEINBRUECK NATIVE GALLERY

Located one block north of Pike Place Market, this gallery is the only space in Seattle dedicated exclusively to native-made art of the Pacific Northwest. Hand-made treasures abound, including perfect gifts like hand carved silver jewelry, paintings, sculpture and more. Heron bracelet by Joe Wilson \$350. 2030 Western Ave, Seattle. (206) 441-3821



## DIVISION ROAD

The Tricker's x Division Road Coffee Burnished Eaton Boot is an unparalleled example of English footwear and uses premium hard-wearing calf leather, a natural leather Barbour welt and midsole and a British-made commando sole. As England's oldest shoe maker, and still utilizing traditional Goodyear welting, a Tricker's is truly made to last a lifetime in all conditions. \$525



## VIRAGO GALLERY

Virago Gallery is an independent, woman-owned gallery and boutique in West Seattle. We champion the work of women artists and designers, featuring original art, exclusive jewelry pieces and handmade gifts for home and body. We are Feminist AF. The Seer by Holly Robisuthi, \$2,200. 4306 SW Alaska St in West Seattle, 206.933.2444, [www.viragogallery.com](http://www.viragogallery.com)

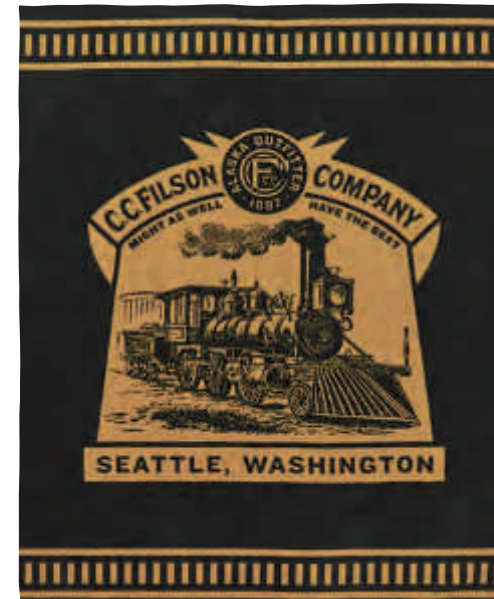


## ISADORAS ANTIQUE JEWELRY

This trusted family business, located in the historic Pike Place Market, offers a thoughtfully curated selection of investment-worthy antique jewelry – with the largest selection of original, heirloom engagement rings in Seattle. Pictured above is a Victorian gold and garnet necklace, circa 1860s. 1601 First Avenue, 206.441.7711, [isadoras.com](http://isadoras.com)

## FILSON FLAGSHIP

This wool and cotton blend blanket is woven with a custom C.C. Filson Co. locomotive design. 64" x 80" Made in the USA. Locomotive Blanket, \$285. 1741 1st Ave S. Seattle, 206.622.3147, [www.filson.com](http://www.filson.com)



## FRYE ART MUSEUM STORE

The asymmetry of this necklace adds a subtle elegance to any outfit. Designed by The Formality, a Seattle-based jewelry line. Find design items, one-of-kind objects, and Pacific Northwest designers at the Museum Store. Line Necklace sterling silver \$175.00. Proceeds support the Museum. Hours: 11-5, Tuesday–Sunday, 11-7, Thursday. 704 Terry Ave, Seattle, 206.432.8201, [store.fryemuseum.org](http://store.fryemuseum.org)



## FRAN'S CHOCOLATES

Fran's Chocolates is a family-owned, Seattle-based company whose handcrafted confections are beloved worldwide. Fran's Downtown offers award-winning salted caramels, truffles, and drinking-chocolate. Visit Fran's Georgetown, which offers tastings and a viewing area, where customers can watch Fran's artisans handcrafting chocolate confections. Fran's Assortment, 20 pieces - \$34. 1325 1st Ave, Seattle, 206.682.0168, For more locations, or to order online, visit [www.frans.com](http://www.frans.com)

## LOIS HILL

Reaching back through centuries around the globe, designer Lois Hill is inspired by diverse cultures both past and present. You will find her globally inspired and hand crafted line in the new Lois Hill Flagship store. Her collections feature pieces in sterling silver, 18K Gold, gemstones and diamonds. Hand carved sterling silver necklaces \$85 to \$225. 1924 First Ave. Tues - Sat 11 am - 6 pm. Sunday 12 - 5 pm, Closed Monday, 206-906-9004







**GOLDMINE DESIGN**

Goldmine Design Jewelers teamed up with the Pike Place Market Foundation to create the iconic Rachel the Pig charms! Every delicately carved Rachel pendant sold benefits the Market Foundation, directly helping those in need in our community! A perfect gift for those who love jewelry and philanthropy! 18k gold \$1,500. Sterling Silver. \$400  
1405 First Avenue, Seattle, 206-622-3333  
[www.goldminedesignjewelers.com](http://www.goldminedesignjewelers.com)

**TIMOTHY DE CLUE COLLECTION**

Part of a curated home collection, like no other. This locally owned showroom known for exclusive home décor is a feast for your eyes. Featuring specialty barware, seasonal décor, lighting, Italian linens, home décor and gifts. Located just south of Pike Place Market, On the corner of 1st And Seneca.  
Seattle Diamond Decanters \$124.95 - \$179.95. 1124 1st Ave Seattle, 206.762.0307, [timothydecluecollection.com](http://timothydecluecollection.com)



**WOODLAND PARK ZOO ZOOSTORE**

Woodland Park Zoo's Tree Kangaroo Conservation Program (TKCP) partners with Caffè Vita to bring a honey-like roast from Papua New Guinea! Grown by farmers committed to conserving 180,000 acres for the preservation of the endangered Matschie's tree kangaroo, TKCP coffee is \$15.00 per bag. 5500 Phinney Ave. N, Seattle, 206.548.1535, [www.zoostore.zoo.org](http://www.zoostore.zoo.org)



**BEN BRIDGE**

Signature Forevermark® Diamond pendant in 18K white gold, \$2,199.  
Downtown Seattle 4th & Pike,  
206-716-1000, Bellevue Square,  
Westfield, Southcenter, Alderwood Mall, [www.benbridge.com](http://www.benbridge.com)



**CUPCAKE ROYALE**

Brand new this holiday season, Cupcake Royale has released six different Limited Edition brittles and barks handmade by Cupcake Royale bakers, with some featuring finishing salts from Jacobsen Salt Co. or milk chocolate from Theo Chocolate. 1 jar for \$12, 4 for \$44, 6 for \$60. Pick up at any Cupcake Royale location or order for shipping at [cupcakeroyale.com](http://cupcakeroyale.com).

**KOBO**

The word KOB0 translates from Japanese as “artist’s workspace,” a well-curated selection of contemporary art and design by Northwest and Japanese artists. KOB0 gallery and shop is known for its fine jewelry, studio ceramics, textiles, wood and a selection of modern Japanese home decor. Ann Chikahisa, silver and bronze convertible necklace \$213, stone stacking rings from \$168. KOB0 (at Higo) 604 South Jackson St, Seattle, 206.381.3000. Also visit our sister shop, KOB0 (Capitol Hill) 814 E. Roy St, Seattle, 206.726.0704, [koboseattle.com](http://koboseattle.com).



**RETROFIT HOME**

One of Seattle’s favorite and most inspiring local stores, Retrofit Home is the only place to shop for Holiday gift giving! Whether you want to wear it, smell it, read it, drink out of it, plant it, sit on it or merely gaze at it, your perfect gift is here. Plus, you can redecorate your house at the same time. Gifts range from \$9.95 to \$129.  
1103 E. Pike, Seattle, 206.568.4663, [www.retrofithome.com](http://www.retrofithome.com).



**LEROY JEWELERS**

A gem in the vibrant Tacoma Theater District crafting handmade jewelry for more than 75 years. From custom jewelry to hand-crafted pottery – discover one-of-a-kind gifts for those one of a kind people on your list with prices starting under \$50 in our gallery. 14K white gold, diamond and amethyst pendant, \$3000.00 Sold! LeRoy Jewelers and The Art Stop, 940 Broadway, Tacoma, 253.272.3377, [www.ljewelers.com](http://www.ljewelers.com)



# THE GUIDE

*An index of our favorite places*

● **Shop** | SEARCH THE CITY / For more listings, see [wheretraveler.com/seattle](http://wheretraveler.com/seattle)



## Lois Hill

It's no surprise designer Lois Hill's First Avenue flagship store has such an exotic look—world travel and historical artifacts are the sources of inspiration for her hand-crafted sterling silver jewelry and accessories, including bracelets, earrings, rings, necklaces, watches and keychains. Just in time for the holidays, the newest collection, Black Rhodium, uses deep, inky colored metal-plated sterling silver to add drama and a modern edge to pendant necklaces. The inspired designs include stars, hearts, crosses, "Om" symbols and more, all made elegant with encrusted white, brown or black diamonds. 1924 First Ave. 206.906.9004. [loishill.com](http://loishill.com)

## APPAREL

### BABY & COMPANY

A fashion outpost in the Northwest since the 1970s, this boutique offers men's and women's apparel, including designs from Harvey Faircloth, Yoshi Kondo, Frank & Eileen and Philippe Model. 1936 First Ave., 206.448.4077.

### BUTCH BLUM

Since 1974, this Seattle-born store has carried top-of-the-line labels for men and women, including Armani, Gaultier, Blumarine and Ji-Oh. 1332 Sixth Ave., 206.622.5760.

### DIVISION ROAD

Stop by this shop for luxury heritage menswear from North American, Western European and Japanese manufacturers, including exclusive pieces from Pacific Northwest brands like Crescent Down Works, Dehen 1920 and Viberg. 536 First Ave. S., 206.755.0215.

## FILSON

This Seattle-based outfitter for outdoor enthusiasts has been making practical, hard-wearing pieces here for more than 100 years. Whether you're a fisherman, hunter, explorer, engineer or just a lover of the outdoors, you'll find clothing and accessories that will stand up to the toughest conditions in the wild. There are heavy wools, rugged cottons and genuine leather—all of them both durable and comfortable. 1741 First Ave. S., 206.622.3147.

### HAMMER + AWL

This men's shop in Seattle's Madrona neighborhood carries everything a stylish man may need, including leather goods, clothing, hats, jewelry, scarves and more from brands like Woolrich, Pendleton and Miansai. A curated selection of home goods is also available, and everything in the store is made in the United States. 1137 34th Ave., 206.992.7444.

## MARIO'S

One of Seattle's premier men's and women's specialty stores, Mario's features Hugo Boss, Brunello Cucinelli, Prada and others. 1513 Sixth Ave., 206.223.1461.

### MOMO

Located in a historic building in the International District, Momo, which means peach in Japanese, carries contemporary men's and women's clothing, as well as accessories and gifts. 600 S. Jackson St., 206.329.4736.

### SEATTLE SHIRT COMPANY

Stop in this shop on Pier 55 for 3,500-square-feet of T-shirts, hoodies, sweatpants and souvenirs in a variety of designs and at a variety of price points. It's the most complete selection of souvenirs you'll find. 1101 Alaskan Way, 206.774.9811.

### STANDARD GOODS

Capitol Hill's latest hot spot, this store carries men's,

women's and home fashions and products with a concentration on brands made in North America. Find favorites like Baggu, Betsy & Iya, Field Notes, Jeffrey Campbell, Pendleton, Will Leather Goods and more. 701 E. Pike St., 206.323.0207.

### TOTOKAELO

This bright and airy space is home to men's and women's apparel and a variety of beautiful home objects. Totokaelo specializes in clothing, shoes and art from designers that have an independent and thoughtful sense of beauty, including A.P.C., Isabel Marant, Rachel Comey, Tienda Ho and more. 1523 10th Ave., 844.868.6523.

## APPAREL-WOMEN

**HORSESHOE**  
The motto is "It's a little bit country and a little bit rock 'n' roll" at this shop, which specializes in "finery for fillies." 5344 Ballard Ave. NW, 206.547.9639.

## JOIE

Find comfortable, casual and fashionable clothing inspired by Southern California at this new boutique in University Village. In addition to flowing tops, easy dresses and cozy sweaters for women, find shoes and accessories to complete the look. 2610 NE Village Lane, 206.939.4522.

## OSKA

Great travel wear with a stylish twist is the specialty at this women's clothing store filled with timeless European looks. Pop into the downtown shop for their signature trousers, boiled wool and casual modern fabrics chosen for their sustainability. 1322 Fifth Ave., 206.209.5401.

## SANDYLEW

This sweet boutique, owned by a local artist and jeweler, procures unique, gorgeous clothing from designers near

and far. Its motto is "having fun getting dressed!" 1408 First Ave., 206.903.0303.

## SASSAFRAS

This boutique in Belltown is home to a variety of Seattle and Northwest designers. Find everyday fashion and accessories that speak to Seattle's style. With a multitude of in-house designers and a variety of sizes to choose from, every woman can find something to make her feel great. 2307 First Ave., 206.420.7057.

## SELL YOUR SOLE

This consignment boutique specializes in women's designer apparel, shoes and accessories. Carefully selected and organized in their Belltown loft, the inventory is constantly changing. 2121 First Ave., Suite 101, 206.443.2616.

## SIMPLE LIFE

This locally owned store specializes in small designers who create women's apparel in natural fibers. Find comfortable yet stylish tops, bottoms, jackets and accessories. 201 Pine St., 206.628.7077.

## VELOURIA

This beloved store specializes in independent, small-production clothing lines from around the United States and Canada. Women's clothing and accessories include Dusen Dusen, Freeman, Field Day, Flora & Fawn, and Frankie and Coco. 145 S. King St., 206.788.0330.

## BOOKS & MUSIC

**EASY STREET RECORDS**  
Find new and used CDs, DVDs and vinyl at this popular Seattle hangout, which is also home to a tasty café. 4559 California Ave. SW, 206.938.3279.

## ELLIOTT BAY BOOK COMPANY

With more than 150,000 books and frequent readings by authors, Elliott Bay Book Company is a book-lover's dream come true. Call for schedule of events. 1521 10th Ave., 206.624.6600.

## CHILDREN'S GOODS

### ARCHIE MCPHEE

You never know what you'll discover at Archie McPhee. Find toys, gifts and novelties for your entire list: From yo-yoing pickles to Shakespeare action figures, this store specializes in the weird and wacky. 1300 N. 45th St., 206.297.0240.

## BOSTON STREET BABY

This locally owned children's clothing store also carries toys, books and other fun trinkets. Pike Place Market, 1902 Post Alley, 206.634.0580.



**LOIS HILL**

Intricately handcrafted,  
globally inspired treasures.

Experience Lois Hill's  
Flagship store for unique  
collections that span the  
boundaries of time and  
culture to create classic  
timeless jewelry.

1924 First Ave, Seattle  
Tues - Sat 11 am - 6 pm  
Sunday 12 - 5 pm

LoisHill.com | @LoisHillJewelry | fLoisHillJewelry

COURTESY LOIS HILL



## ● Shop

### FOOD & DRINK BEECHER'S HANDMADE CHEESE

Visitors can witness the cheese-making process in this shop that carries more than 35 artisan labels from around the region. 1600 Pike Place, 206.956.1964.

### FRAN'S CHOCOLATES

For more than 35 years, Fran Bigelow has been creating her decadent chocolate treats, which have become a local favorite. Her delectable salted caramels have a serious cult following. The caramels, truffles and chocolate bars make wonderful gifts. 1325 First Ave., 206.682.0168; University Village, 2626 NE University Village St., 206.528.9969; Bellevue, 10036 Main St., 425.453.1698; Georgetown, 5900 Airport Way S, 206.508.4535.

### FRANKLY SWEETS

Find this candy shop on Pier 55, where you can shop from more than 150 selections of sweet favorites. The store specializes in saltwater taffy, fudge and gummy candies. 1101 Alaskan Way, 206.622.7845.

### HOME DECOR

**GLASSYBABY**  
Handmade Glassybaby vessels come in nearly every color imaginable, and with 10 percent of every sale going to help people in need, they make wonderful gifts for friends and family—or yourself. Visit the Madrona location to view the hot shop. Madrona, 3406 E. Union St., 206.518.9071; University Village, 2627 NE Village Lane, 206.274.4683; Bellevue, 10230 Main St., 425.256.2927.

### RETROFIT HOME

More than just a furniture store, this mini-department store offers stylish, fun, modern home decor and furniture, plus art, cards, plants and other gift items. 1103 E. Pike St., 206.568.4663.

### JEWELRY & FINE GIFTS BEJEWELD

An authorized Pandora and Swarovski retailer, head to Pier 55 to also find a collection of local jewelry and gifts. 1101 Alaskan Way, 206.624.1188.

### BEN BRIDGE JEWELER

Specializing in fine jewelry and timepieces, this downtown shop is known for exceptional customer service. Ben Bridge has 13 locations in Washington state, seven of which are in the greater Seattle area at major shopping malls. For more locations, call 888.448.1912. 1432 Fourth Ave., 206.628.6800.

### GOLDMINE DESIGN JEWELERS

This small workshop of fine artisan jewelers will collaborate with you to make your custom jewelry dreams a reality. Work one-on-one with their talented team to create a totally unique piece. 1405 First Ave., 206.622.3333.

### ISADORAS ANTIQUE JEWELRY

This trusted family business, located in historic Pike Place Market, offers a bright showroom curated with exquisite heirloom treasures, featuring authentic antique engagement rings. The ultimate antique jewelry experience! 1601 First Ave., 206.441.7711.

### JJ CAPRICES

Visit this online boutique for treasures from around the world, carefully curated by Jen Jedda. As she travels the world, Jen seeks out handmade jewelry, home accessories and more, resulting in an eclectic mix at various price points, including many one-of-a-kind pieces. www.jjcaprices.com.

### LEROY JEWELERS

For the past 75 years, this family-owned custom jewelry shop has crafted every single piece of jewelry by hand right here in Tacoma, ensuring

## SHOP SEATTLE PROMOTION



### MILAGROS MEXICAN FOLK ART

Our gallery/boutique boasts a first-rate collection of Mexican folk art, including Oaxacan Carvings, Tinwork, Mirrors, Huichol Art, Day of the Dead, Masks, Talavera and More. We offer an extensive selection of whimsical and collectible works of art by several of Mexico's most renowned artisans.

1409 1st Ave (Between Pike & Union), Seattle  
206.623.1766, www.MilagrosSeattle.com



### SASSAFRAS

This boutique in Belltown is home to a variety of Seattle and Northwest designers. Find everyday fashion and accessories that speak to Seattle's style. With alterations in-store and a variety of sizes, every woman can find something to make them feel great.

2307 First Ave., Seattle, 206.420.7057  
www.sassafra-seattle.com



310 Occidental Ave S., Seattle  
206-935-9400  
www.clementines.com



## Shop ●

unique treasures you won't find anywhere else. 940 Broadway, 253.272.3377.

### SHOES & ACCESSORIES BELLA UMBRELLA

This boutique is a one-of-a-kind destination where shoppers can find fine umbrellas to shield themselves from Seattle's infamous downpour. There are endless options for women, kids, men, travelers and more. They even offer a vintage-umbrella-rental service, where you can choose from their stash of over 800 vintage umbrellas that were primarily made in the 1930s-1960s. 1535 First Ave., Suite 8, 206.297.1540.

### CLEMENTINES

This Pioneer Square shoe shop is a destination for shoes that are as stylish as they are fun to wear. They carry brands like Coclico, Fortress of Inca, Intentionally Blank, Kat Maconie and Miista. 310 Occidental Ave. S, 206.935.9400.

### MARKET STREET SHOES

This popular Ballard shop has trendy-yet-comfortable shoes from brands like Lilimill from Italy, Birkenstock and Dansko, fun socks and a thoughtful selection of apparel. 2232 NW Market St., 206.783.1670.

### SHOPPING CENTERS THE BELLEVUE COLLECTION

Three major shopping centers—the 1.3-million-square-foot Bellevue Square, 100,000-square-foot Bellevue Place and 310,000-square-foot Lincoln Square—offer hundreds of shops and more than 40 restaurants. 575 Bellevue Square, Bellevue, 425.454.8096.

### CROSSROADS BELLEVUE

At this one-of-a-kind shopping, dining and entertainment destination, find stores including Bed Bath & Beyond, Cost Plus World Market and Ulta Beauty. Head to the Market Stage for a busy lineup of live music from a variety of



with its vaulted ceilings and extensive selection. In addition to shopping, there are a number of restaurants and a movie theater on the top floor. *600 Pine St., 206.405.2655.*

#### UNIVERSITY VILLAGE

This open-air shopping center features a unique mix of shopping and dining, including Amazon Books, Lululemon, The Confectionery, Brandy Melville, Warby Parker, The Frye Company, Scotch & Soda, Madewell, Margaret O'Leary, Mrs. Cook's, Room & Board and Din Tai Fung. *2623 NE University Village St., 206.523.0622.*

#### WALLINGFORD CENTER

This shopping center in the middle of Seattle's Wallingford neighborhood is packed with gems. Stop in and browse a fantastic yarn selection, shop for sustainably created kids clothes, and pick up some creative gifts. Choose from modern to ethnic (including plus sizes) at several clothing and accessories boutiques. Then dine on Indian fare al fresco on the fountain patio and satisfy your sweet tooth with stunning cupcakes. Get kids and adult haircuts, the hardware you need, even custom framing. An integrated pharmacy and early childhood academy round out the experience. *1815 N. 45th St.*

#### SPECIALTY SHOPS

##### EASTSIDE

##### HARLEY-DAVIDSON

Browse gleaming new and used Harleys, or pick up Harley-Davidson merchandise in the retail shop. *14408 NE 20th St., Bellevue, 425.702.2000.*

##### FRYE ART MUSEUM STORE

The selection at this shop is as eclectic and meticulously curated as the museum's exhibits. Jewelry, home goods and one-of-a-kind pieces from Pacific Northwest designers and artists. *704 Terry Ave., 206.622.9250.*

#### HAPPY SALMON PIER 56

Sharing a space with Simply Seattle on Pier 56 of the waterfront, this store is full of retro toys, playful gifts and unexpected finds for the whole family. *1201 Alaskan Way, Suite 102, 206.890.6826.*

#### KOBO

Specializing in Japanese folk art, this shop introduces visitors to the works of studio craftsmen, primarily from Japan and the Northwest, who create pottery, figurines, textiles and more. *Capitol Hill, 814 E. Roy St., 206.726.0704; International District, 602-608 S. Jackson St., 206.381.3000.*

#### MILAGROS MEXICAN FOLK ART

This gallery/boutique boasts a first-rate collection of Mexican folk art, including carved animals from Oaxaca, tinwork and mirrors, masks and Huichol yarn paintings. *1409 First Ave., 206.623.1766.*

#### PIRATES PLUNDER

Set your course toward this shop on Pier 57 for a bounty of booty. Find everything a pirate needs, from costumes and signs to decor and flags—there is plenty of other fun gear, too, including games, toys, books and party supplies. *1301 Alaskan Way, 206.624.5673.*

#### PORTAGE BAY GOODS

This Fremont gift shop carries a variety of quirky, locally made goods. Find children's items, home goods, cards, accessories and more. *621 N. 35th St., 206.547.5221.*

#### SIMPLY SEATTLE

This store, quite simply, represents everything Seattle. Find gifts and souvenirs that touch on what makes the Emerald City unique, from the Space Needle and the Seahawks to ferry boats and Boeing. *1201 Alaskan Way, 206.579.3946; 1600 First Ave., 206.448.2207.*

#### SUGARPILL

This Capitol Hill spot is part apothecary, part mercantile. Find essential oils—and expertise from proprietor Karyn Schwartz, who is an herbalist and homeopathic consultant—as well as gift items including bath products, chocolate, salts and a variety of locally made goods. *900 E. Pine St., 206.322.7455.*

#### TIMOTHY DE CLUE COLLECTION

With an eclectic mix of styles, this store has a curated collection of home-decor accessories, furniture, vintage finds and gifts. *1124 First Ave., 206.762.0307.*

#### URBAN HARDWOODS

Offers solid wood furniture made in Seattle from trees salvaged throughout the Northwest due to disease and natural causes. The entire production process, from milling to completion, takes place within a two-mile radius and has been designed to minimize and reuse as many resources as possible. *2101 First Ave., 206.443.8099.*

#### WATSON KENNEDY

This store is a Seattle fixture for those looking for the finer things. Brimming with a sophisticated European feel, Watson Kennedy offers everything from European house wares and antiques to luxurious bath and beauty products to gorgeous gift objects. *Pike Place Market, 86 Pine St., 206.443.6281; 1022 First Ave., 206.652.8350.*

#### WOODLAND PARK ZOO STORE

Pick up cuddly, plush versions of your favorite zoo residents, eco-friendly toys, children's books or something from the wide selection of branded souvenirs, which includes clothing, reusable travel mugs and more. *5500 Phinney Ave. N., 206.548.1535.*

#### YE OLDE CURIOSITY SHOP

Founded in 1899, this unique store has art from the

Northwest as well as souvenirs, jewelry and quirky gifts for all ages. Blended with the shop is a free museum that showcases a collection of bizarre and unusual items. *1001 Alaskan Way, 206.682.5844.*

#### SPORTING GOODS

##### EVO

The hippest outdoor gear store around with brands such as Burton, Vans, Ride and We Are the Superlative Conspiracy. *3500 Stone Way, 206.973.4470.*

##### FJALLRAVEN

Founded in Sweden 50 years ago, this lifestyle brand specializes in functional outdoor products like sleeping bags, tents, day packs, jackets, clothing and more. *1113 First Ave., 206.602.6588.*

##### KAVU

Founded in Seattle's Ballard neighborhood, KAVU's outdoor lifestyle clothing has been keeping men and women ready for any adventure they might encounter since 1993. *Ballard, 5419 Ballard Ave. NW, 206.783.0060; Downtown, 1211 First Ave., 206.508.5434.*

##### OISELLE

This locally owned women's running apparel store's flagship location is at University Village Shopping Center. Find stylish sports bras, shorts, tights, tanks and jackets—everything needed to go for a run, whatever the weather. *2632 NE University Village St., 206.523.1091.*

##### REI

This megastore offers gear for every kind of outdoor recreation. At the flagship location, shoppers can get a workout on their massive indoor climbing crag. *222 Yale Ave. N., 206.223.1944.*

## SHOP SEATTLE

### SANDYLEW

sandylew is a great place to have some fun getting dressed for the holidays and everyday! Sandy and her staff welcome you and look forward to helping you find just the right things to feel and look great! Xenia Design, Alembika, Staples, NY77, Comfy, Spirithouse, Vanite Couture, Petit Pois, Jason, Sun Kim, Luukaa and Krazy Larry are just a few of the carefully curated range of designers from the US, Europe, Asia, Australia and Israel Sandy brings in every season! Named Best Downtown Boutique by Seattle Magazine, sandylew will make your Seattle visit exceptional! Open every day 11am-6pm.

**1408 First Avenue, Seattle  
between SAM & Pike Place Market, 206.903.0303**



### KAVU

KAVU is an acronym for the "perfect day". Founded in the Pacific Northwest in 1993, KAVU stands for Klear Above Visibility Unlimited. But, as catchy as it sounds, KAVU is much more than just the name of our company. KAVU is a philosophy, a perspective, and a way of life that revolves around doing what you love in nature's playgrounds. From deep wilderness to your neighborhood park, KAVU is "true outdoor wear" crafted to be your go-to favorite, the first item you throw on when adventure calls—which is ridiculously often.

**Downtown Seattle, 1211 First Avenue, 206.508.5434  
Ballard, 5419 Ballard Avenue NW, 206.783.0060  
[kavu.com](http://kavu.com)**

### SIMPLE LIFE

A downtown Seattle boutique built on timeless non-constructed easy wear clothing located in the Pike Place Market area on the corner of 2nd and Pine, on the same corner for over 20 years (formerly Passport). You'll find clothing made of natural fibers that travel well and last long without special care. Supporting small designers such as Cut Loose, Habitat, Kleen, Flax, Fridaze, Dai, Chalet, Fat Hat, URU, Yasuko, Asian Eye and more. Open 7 days a week Mon-Sat 10-6 and Sun 11-5. Find them on Facebook or shop online. Live the Simple Life!

**201 Pine Street, Seattle 206-628-7077  
[simplelifeseattle.com](http://simplelifeseattle.com)**





## SHOP SEATTLE

### SELL YOUR SOLE

Tucked inside a modern studio loft behind Cherry Street Coffee in Belltown, lies one of Emerald City's true hidden gems. Sell Your Sole Consignment Boutique, has plundered the finest closets in the city to bring you luxury designer finds, up to 70% off their retail price. With an inventory that changes daily, shoppers will find highly coveted brands like Alexander Wang, Balenciaga, Chanel, Christian Louboutin, Helmut Lang, Prada, Rag + Bone and more. Sell Your Sole also caters to self-proclaimed "shoe addicts" by dedicating an entire floor to women's shoes. Sell Your Sole isn't easy to find, but your perseverance will pay off once you step into this beautiful shop.

**2121 First Ave. Suite 101, 206.443.2616**



### NANCY'S SEWING BASKET

Nancy's is closing its door for the final time on November 18th. We want to thank all of our customers for their loyalty and support these last 39 years. We will miss you all.

**2221 Queen Anne Ave. N, Metro Bus routs 3 and 13., 206.282.9112 | 800.443.2967, nancyssewingbasket.com**



### TIMOTHY DE CLUE COLLECTION

Unique style and sensibility, life's essential luxuries. Come in today for home decor, the latest home trends and endless inspiration. This showroom owned by local designer Timothy De Clue, has a curated home collection like no other. Featuring specialty barware, dinnerware, apothecary, luxury Italian bedding, furniture, décor, lighting, souvenirs, and gifts. 7 days a week 10-6pm.

**1124 1st Avenue, Seattle**

**206.762.0307, timothydecluecollection.com**



## SHOP SEATTLE

### ISADORAS ANTIQUE JEWELRY

Located in the historic Pike Place Market, Isadoras is a family business celebrating 44 years specializing in exquisite antique jewelry. This carefully curated collection encompasses original antique engagement rings and amazing treasures selected worldwide. Experience stunning jewels from the Georgian, Victorian, Edwardian and Mid-Century eras. Whether you are searching for the perfect engagement ring, a surprise gift, or to enhance your own heirloom collection, please visit Isadoras. Tax-free if shipped out of state. Mon-Sat 11-6 and Sun 11-5.

**Part of the Inn at the Market Complex.  
1601 1st Ave, 204.441.7711 isadoras.com**



### GOLDMINE DESIGN

Nestled 22 years in the heart of Seattle (half a block south of Pike Place Market), Goldmine Design is a small workshop of fine artisan jewelers where creativity flows. Whether from the neighborhood or visiting from around the world, clients come to collaborate with us, making their custom jewelry visions a reality. Our showcases are always brimming with unique pieces of jewelry, created with recycled precious metals and ethically sourced gemstones and diamonds. So if you are looking for a beautiful gift or you want to start your own project we invite you to get involved in this creative tradition!

**1405 1st Ave, Seattle, 206.622.3333  
goldminedesignjewelers.com**

### FRAN'S CHOCOLATES

Featured on Food Network's "The Best Thing I Ever Ate," Cooking Channel's "Unique Sweets," and The Today Show, Fran's Chocolates is a family-owned, Seattle-based company whose handcrafted confections are beloved worldwide. Fran's offers award-winning salted caramels, truffles, and drinking-chocolate. Visit Fran's Georgetown for guided tastings and a view of Fran's artisans handcrafting chocolate confections.

**Downtown, 1325 1st Avenue, 206.682.0168  
Georgetown, 5900 Airport Way, 206.508.4535  
U Village, 2626 NE U Village St, 206.528.9969  
Bellevue, 10036 Main St, 425.453.1698  
frans.com**





## ● THE GUIDE | *Sights*



### Black Santa Visit

During the first two weekends of December, Northwest African American Museum gets festive with family fun, including a visit from Black Santa, arts and crafts and movie screenings. *2300 S Massachusetts St., 206.518.6000.*

### ANIMAL PARKS & ZOOS

#### NISQUALLY NATIONAL WILDLIFE REFUGE

One of Western Washington's most accessible wildlife refuges, Nisqually offers a splendid day for birders and nature enthusiasts. *100 Brown Farm Road, Olympia, 360.753.9467.*

#### SEATTLE AQUARIUM

Filled with more than 400 species of marine life, the aquarium is home to river and sea otters, harbor seals and the largest species of octopus in the world. Be sure to visit Window on Washington Waters, a 120,000-gallon exhibit with daily diver shows. Open daily 9:30 am-5 pm. *1483 Alaskan Way, Pier 59, 206.386.4300. CityPASS participant.*

#### WOODLAND PARK ZOO

The 92-acre Woodland Park Zoo is considered one of the best in the world. Hop on a historic carousel, walk amongst the roses in the rose garden or see animals from around the world, including giraffes, tigers, penguins and many more. Open daily 9:30 am-6 pm. *5500 Phinney Ave. N, 206.548.2500. CityPASS participant.*

### ATTRACTION PASSES CITYPASS

This nine-day pass saves you nearly 50 percent on total admission to five of Seattle's top attractions: Argosy Cruises Harbor Tour, Seattle Aquarium, the Space Needle, Museum of Pop Culture (MoPOP) or the Woodland Park Zoo and the Chihuly Garden and Glass or the Pacific Science Center. Passes are sold at each attraction and are available online. Adults \$79 and youth 4-12 \$59. *www.citypass.com. 888.330.5008.*

### ATTRACTIONS

#### CENTURYLINK FIELD

Home of the Seattle Seahawks football team and the Seattle Sounders soccer team, the venue also hosts occasional concerts. Public tours are available throughout the year. *800 Occidental Ave. S, 206.381.7848.*

#### GATES FOUNDATION VISITOR CENTER

The free visitor center at the Bill & Melinda Gates Foundation takes guests of all ages through the connections we have with each other across the planet. From mosquito nets to personal water filters, see the ingenious ways people are helping other people. Guided tours can be requested in advance via the



### Zoolights

Ride a camel, take a spin on a vintage carousel, warm up with hot cocoa and be wowed by a magical landscape of more than half-a-million lights at Port Defiance Zoo & Aquarium. *5400 N. Pearl St., Tacoma, 253.591.5337.*

website. The visitor center is located across the street from the Seattle Center campus. *440 Fifth Ave. N, 206.709.3100.*

#### PIKE PLACE MARKET

The United States' oldest continuously operating market, Pike Place abounds with unusual shops and restaurants that are a lively introduction to the sights, sounds and tastes of Seattle. *85 Pike St., 206.682.7453.*

#### SEATTLE CENTER

The site of the 1962 World's Fair is more than 74 acres and the home of museums, theaters and public art like the popular International Fountain. The center hosts major sporting events and concerts and is home to both the Seattle Opera and the Pacific Northwest Ballet. It also hosts numerous cultural festivals. Venues onsite include the Space Needle, McCaw Hall, MoPOP, Pacific Science Center and the Children's Museum. The Monorail travels from the Seattle Center to downtown's Westlake Center. *305 Harrison St. 206.684.7200.*

#### SEATTLE GREAT WHEEL

Jutting out over the waters of Elliott Bay on Pier 57, this Ferris wheel sends riders 175 feet into the sky in enclosed gondolas equipped with both

heating and air conditioning; each ride is a leisurely 15 minutes complete with amazing views! *1301 Alaskan Way, Pier 57, 206.623.8607.*

#### SPACE NEEDLE

Seattle's most familiar icon, the 605-foot Needle was built for the World's Fair of 1962. Ride the elevator to the observation deck for a 360-degree view of the city, Elliott Bay and the Olympic and Cascade mountain ranges. Then enjoy fine dining in SkyCity, the Needle's revolving restaurant. The deck is open M-Th 9:30 am-9:30 pm, F 9:30 am-10:30 pm, Sa 9 am-10:30 pm, Su 9 am-9:30 pm. *Seattle Center, 400 Broad St., 206.905.2175. CityPASS participant.*

#### SKY VIEW OBSERVATORY

Located on the 73rd floor of the Columbia Center, at a height of more than 900 feet, Sky View offers stunning 360-degree views of the Puget Sound region. *701 Fifth Ave., 206.386.5564.*

#### WINGS OVER WASHINGTON

This "aerial adventure" takes visitors flying across the state of Washington. Strap into a theater seat, and then go up and away with the aid of the state-of-the-art theater. See the Olympic National Forest,

COURTESY NORTHWEST AFRICAN AMERICAN MUSEUM; PORT DEFIANCE ZOO & AQUARIUM

## *Sights* ●

Mount Rainier and more. *1301 Alaskan Way, 206.602.1808.*

### SPECIAL INTEREST MUSEUMS

#### CHIHULY GARDEN AND GLASS

Located at the foot of the Space Needle, Chihuly Garden and Glass is Dale Chihuly's permanent exhibition space. Galleries include both new creations and expansions of popular works from around the world. Don't miss the glass house, with a massive installation piece featuring 1,400 Chihuly Persians, and the outdoor gardens, where glass art is intermixed with plants and landscaping elements native to the Northwest. *305 Harrison St., 206.753.4940.*

#### MOPOP MUSEUM OF POP CULTURE

This epic museum focuses on music, science fiction and all things pop culture. Current exhibits include "Science Fiction and Fantasy Hall of Fame Exhibition," "Wild Blue Angel: Hendrix Abroad, 1966-1970," "Fantasy: Worlds of Myth and Magic" and "Indie Game Revolution." Open daily 10 am-5 pm. *Seattle Center, 325 Fifth Ave. N, 206.770.2700.*

#### MUSEUM OF HISTORY & INDUSTRY

Also known as MOHAI, this important local collection tells Seattle's story from the 1800s to the present through exhibits like the Great Seattle Fire. The city's history is captured in images, artifacts, films and oral histories. Open daily 10 am-5 pm; Th until 8 pm. *860 Terry Ave. N, 206.324.1126.*

#### SEATTLE PINBALL MUSEUM

This museum has two floors and eight decades of classic and modern pinball games. Passes start at \$12 for kids and \$15 for adults. (No children under 7 years of age.) There is also beer and soda. Open Su-M, W-Th noon-6 pm; F-Sa noon-10 pm. *508 Maynard Ave. S, 206.623.0759.*

## A HIGH POINT OF ANY DAY IN SEATTLE

### SKY VIEW OBSERVATORY

YOUR TICKET IS AN ALL DAY PASS | CHILDREN 5 & UNDER FREE!

COLUMBIA CENTER | FLOOR 73 | 701 FIFTH AVE SEATTLE  
OPEN DAILY\* | SKYVIEWOBSERVATORY.COM | 206.386.5564

\*EXCLUDING SOME HOLIDAYS AND PRIVATE EVENTS. SEE WEBSITE FOR DETAILS. PHOTO: MIKE HED

## PLAY PINBALL IT'S ALWAYS FUN!

Over 50 Games from the 1960's to Present!  
Come Play them All!

• Adults and kids welcome\*

• Free play games with admission or all day pass (multi entry)

• Craft beer, vintage soda pop and snacks

508 Maynard Ave S, Seattle | 206-623-0759  
**SEATTLEPINBALLMUSEUM.COM**

\*Sorry, no kids under 7.



## THE GUIDE | *Explore*



### Pathway of Lights

Green Lake, one of Seattle's most-cherished parks gets into the festive spirit on the evening of December 9 with hundreds of luminaria marking the way to free musical performances. *7201 E. Green Lake Drive N, 800.684.4075.*

### TOURS

#### ARGOSY CRUISES

Argosy's boat cruises have been visitors' favorites since 1949. There are six fully narrated, family-friendly tours to explore Seattle by boat, including their Harbor Cruise, Locks Cruise, Locks Cruise - Stay & Play, Lake Union Cruise, Lake Washington Cruise and the Tillicum Excursion, a four-hour experience to Blake Island that includes a buffet with alder-fire-roasted fish. *1101 Alaskan Way, Pier 55, 206.623.1445. CityPASS participant.*

#### ATOMIC HELICOPTERS

Founded in 2010, Atomic Helicopters provides a variety of services including flight training, tours and even agricultural needs to crops around Central Washington. The tours provided to customers include a City Tour, Lake Washington Tour and Snoqualmie Falls Tour, with a maximum of three passengers per ride. Open M-F 8 am-6 pm; Sa 10 am-8 pm. *6987 Perimeter Road, Suite 200, 206.762.3245.*

#### BENEATH THE STREETS

Head underground at this tour of old Seattle. Tour guides relay stories of Seattle's past while taking you on this 60-minute tour through three sections of his-

toric passageways in Pioneer Square that haven't previously been open to the public. *102 Cherry St., 206.624.1237.*

#### CANOPY TOURS NW

Experience a Pacific Northwest forest in a whole new way. Canopy Tours NW takes you through a sustainably managed, 234-acre property via six zip lines, a log bridge, two trail walks and a 47-foot final rappel. Learn about the history of the land and get wildlife information while on the tour. *332 NE Camano Drive, Camano Island, 360.387.5807.*

#### FUTURE OF FLIGHT AVIATION CENTER AND BOEING TOUR

Explore interactive exhibits and displays and then go behind-the-scenes of the only commercial jet assembly plant open for tours in North America. The 90-minute tour lets you watch the assembly of 747s, 777s or 787 Dreamliners. Participants must be at least 4 feet tall. *8415 Paine Field Blvd., Mukilteo, 800.464.1476.*

#### KENMORE AIR

With daily flights to regional destinations including the San Juan Islands and Victoria, British Columbia, these historic seaplanes have been giving guests exciting travel options and regional "flight seeing



### Clipper Vacations

Enjoy a whale watching tour around the San Juan Islands or celebrate the season with a high-speed trip to charming Victoria, B.C. for a tour of the holiday lights at Butchart Gardens. *2701 Alaskan Way, 800.888.2535.*

tours" of the Northwest for more than 70 years. *950 Westlake Ave. N, 425.486.1257.*

#### SAFECO FIELD TOURS

Bring your camera and take a "behind the seams" tour of Safeco Field, the home of the Seattle Mariners. Participants will view restricted areas of the ballpark such as the Press Box, Owners' Suite and Visitors' Clubhouse. Tickets are \$10-\$12. *1250 First Ave. S, 206.346.4241.*

#### SAVOR SEATTLE FOOD TOURS

Taste the city during a walking tour: Sample bites from Pike Place Market, downtown Seattle and other neighborhoods' delicious spots. There is also a Booze-n-Bites tour and a Chocolate Indulgence tour—or schedule a private or group event. *www.savorseattletours.com. 206.209.5485.*

#### SEATTLE ARCHITECTURE FOUNDATION

Dig deeper into Seattle's buildings with a tour through the Seattle Architecture Foundation. Tours focus on architecture style, neighborhood or are geared toward families. Check the website for schedules. *Rainier Square, 1333 Fifth Ave., Suite 300, 206.667.9184.*

#### SEATTLE BITES FOOD TOURS

Take a delicious tour of Seattle's historic Pike Place Market. This food tour lets you try sweet and savory food from around the Market. Tours are limited to 16 people, and you'll get a small listening device so you won't miss anything your guide has to say. Call or book your spot online. *www.seattlebitesfoodtours.com. 425.888.8837.*

#### SEATTLE BY SEGWAY

Those 12 years and older can buzz around the city on a Segway tour. Cruise past the waterfront, Pioneer Square, Pike Place Market, Space Needle and more. Tours five times daily; reservations required. *214 Alaskan Way S, 206.388.5508.*

#### SEATTLE WINE TOURS

Taste wine in style with Seattle Wine Tours. Whether you want to find the winery that makes your favorite bottle or discover a brand-new gem, the knowledgeable chauffeurs can tailor the tour to your preferences. The fleet of comfortable vehicles has room for 2-35 passengers. *www.seattlewinetours.com 206.444.9463.*

**UNDERGROUND PARANORMAL EXPERIENCE**  
"Don't watch Ghost Hunters. Be one." Unlike any other

paranormal tour, this new attraction gives guests the equipment to do their own investigation and experience what trained paranormal investigators face—while roaming the exclusive passageways of Seattle's world-famous underground, created when the city rebuilt on top of itself after the Great Fire of 1889. This hands-on, lights-off production is by the same people as the uber-popular Underground Tour. *614 First Ave., 206.682.4646.*

#### UNDERGROUND TOUR

Seattle's most unusual attraction is a humorous stroll through subterranean storefronts and sidewalks entombed when the city rebuilt on top of itself after the Great Fire of 1889. Get a time capsule view of the buried city. It's history with punch lines! After the tour, grab a bite to eat at Doc Maynard's Public

House restaurant and bar. *614 First Ave., 206.682.4646.*

#### UNDERWORLD TOUR

This adults-only stroll takes you through the old red-light district of the abandoned, underground city that was Seattle's birthplace. It's a raunchier, lust-filled, laugh-out-loud version of the world-famous Underground Tour. It's totally inappropriate! A cocktail is included with your ticket. *614 First Ave., 206.682.4646.*

#### WATERWAYS CRUISES

These dinner cruises are a unique and unforgettable way to experience Seattle. Relax and take in the sights on a beautiful yacht while enjoying fresh Northwest cuisine prepared just for you. They recently received the 2014 Certificate of Excellence by TripAdvisor. *2441 N. Northlake Way, 206.223.2060.*

### PARKS & BEACHES

#### ALKI BEACH

Seattle's first European settlers established their homesteads at this scenic West Seattle spot 150 years ago. Today the 2.5-mile stretch of sandy beach on the shores of Puget Sound is great for walking, jogging or in-line skating. Alki's historic 1913 lighthouse is a charming sight for tourists and lighthouse buffs. *Alki Avenue Southwest, West Seattle.*

#### BLOEDEL RESERVE

Located a short ferry ride away on Bainbridge Island, Bloedel Reserve comprises 150 acres of natural beauty, including 84 acres of second growth forest, and various ponds, gardens and meadows. *7571 NE Dolphin Drive, Bainbridge Island, 206.842.7631.*

#### BURKE-GILMAN TRAIL

This popular biking and jogging trail covers more than 10 miles in Seattle. It begins in Shilshole Bay and ends in Bothell. Call 206.684.4122 for trail information and a map. *60th Place NE and Bothell Way to Eighth Ave. NW.*

#### CAL ANDERSON PARK

This recently renovated park and play field has brought a whole new feeling of community to the Capitol Hill neighborhood. Have a picnic, play Frisbee, dip your toes in the beautiful reflection pool, or just watch the sun set over the dramatic modern fountain. *1635 11th Ave., 206.684.4075.*

#### DISCOVERY PARK

A trek through Discovery Park, the largest wilderness expanse in the city, feels like an escape to another world. The park's sprawling grounds feature forests, meadows, tide pools, sand dunes and a gorgeous view of the sound. *3801 Discovery Park Blvd., 206.386.4236.*

#### GAS WORKS PARK

One of Seattle's most unmistakable landmarks is the mountainous tangle of iron that forms the centerpiece of Gas Works Park. The now-defunct structure complements a stunning downtown view. This is a choice spot to fly a kite, enjoy a picnic or explore the play barn. The park boasts excellent views of Lake Union and the Seattle skyline, making it one of the most popular spots to watch Fourth of July fireworks. The popular Burke-Gilman biking and jogging trail passes by as well. *2101 N. Northlake Way, 206.684.4075.*

#### GOLDEN GARDENS PARK

This city park offers sweeping views of Puget Sound and the Olympic Mountains. The park includes a long sandy beach, a short loop trail through two wetlands areas, a dog park, a fishing pier, fields for soccer and grills for picnics.



## SAFECO FIELD TOURS





**Tale a tour of Safeco Field, the spectacular home of the Seattle Mariners. The 19.59 acre outdoor ballpark features real grass, a retractable roof and the largest videoboard in Major League Baseball. View areas of the ballpark that are normally restricted to the public, including the Press Box, Owners Suite, Field, Dugouts, Visitors Clubhouse, All-Star Club, and more.**

**MARINERS.COM/TOURS • (206) 346-4241**

COURTESY SEATTLE PARKS AND RECREATION; CLIPPER VACATIONS



8498 Seaview Place NW,  
206.684.4075.

#### KERRY PARK

A small park on the west side of Queen Anne featuring the much-photographed Changing Forms sculpture and stunning view of downtown Seattle. 211 W. Highland Drive, 206.684.4075.

#### KINNEAR PARK

Those quintessential Seattle photos? The ones with a birds-eye view of the Space Needle, downtown, Mount Rainier and Elliott Bay? Most of them are taken here at Kinnear Park. The view alone is worth the trip. 899 W. Olympic Place.

#### LAKE UNION PARK

On the south end of Lake Union sits this beautiful park, which is also home to the Museum of History and Industry and the Center for Wooden Boats. The South Lake Union Streetcar has a stop here, and it's close to Amazon's campus as well as a variety of restaurants and bars. 860 Terry Ave. N, 206.684.4075.

#### MARYMOOR PARK

This park in Redmond, on Seattle's Eastside, has 640 acres to explore. In addition to trails, there is a giant off-leash dog park, a velodrome, athletic fields and an amphitheatre for live music. 6046 W. Lake Sammamish Parkway NE, Redmond, 206.205.3661.

#### VOLUNTEER PARK

At this beloved Olmsted Brothers-designed park, watch the sunset sparkle on the reservoir or climb the water tower for a 360-degree view of the city. The park is also home to the Asian Art Museum, the Volunteer Park Conservatory, and the work of sculptor Isamu Noguchi. Neighboring Lake View Cemetery is the resting place of Seattle pioneers and Bruce Lee and his son, Brandon. 1247 15th Ave. E, 206.684.4075.

#### WARREN G. MAGNUSON PARK

Situated on Lake Washington, this park boasts beaches, an off-leash dog area, sports fields, walking trails, picnic shelters, a boat launch, and open stretches for kite flying. 7400 Sand Point Way NE, 206.684.4946.

#### WATERFALL GARDEN PARK

An improbable and wonderful secluded little park in Pioneer Square that is home to a majestic waterfall cascading down rocks. 219 Second Ave. S, 206.624.6096.

#### TRANSPORTATION

##### KING COUNTY WATER TAXI

This water taxi shuttles across Elliott Bay between Pier 50 and the Seacrest dock in West Seattle daily in the summer and fall (weekdays in the winter and spring), offering great views along the way. 206.684.1551.

#### SEATTLE CENTER MONORAIL

Seattle's above-the-street monorail has been transporting travelers from Westlake Center to the Seattle Center since it opened for the 1962 World's Fair—when Elvis Presley hopped a ride! One-way fares are \$2.50 for adults, \$1.25 youth (5-12), seniors (65+), and disabled/persons with Medicare cards. Children 4 and younger ride for free. Cash only. Westlake Center, 400 Pine St., 206.905.2620.

#### WASHINGTON STATE

##### FERRIES

Take the downtown ferry to Winslow for dinner and a stroll. The Fauntleroy ferry delivers you to the rustic, wooded shores of Vashon Island. Fares vary. 206.464.6400.

#### BREWERIES

##### BELLEVUE BREWING COMPANY

Located in Bellevue, this brewery also has a full-service restaurant. Stop in to try one of their 12 varieties. 1820 130th Ave. NE, Bellevue, 425.497.8686.

#### FREMONT BREWING

Fremont Brewing's Urban Beer Garden is open 11 am-9 pm daily. Stop by to try their pale ale, India pale ale, wheat or stout, or one of their seasonal varieties. 3409 Woodland Park Ave. N, 206.420.2407.

#### MACHINE HOUSE BREWERY

This Georgetown brewery specializes in English-style ales. Their tasting room serves cask ale from traditional hand pumps. 5840 Airport Way S, 206.402.6025.

#### SCHILLING CIDER COMPANY

Visit the Schilling Cider House in Seattle to try their creations alongside other draft and bottled ciders, or head south to Auburn to visit the tasting room. 708 N. 34th St., 206.420.7088; Tasting Room, 4402 D St. NW, Suite 101, Auburn.

#### DISTILLERIES

##### 3 HOWLS DISTILLERY

This SoDo distillery produces Seattle's first rum, as well as gin, whiskey and a variety of flavored vodkas including banana, blood orange and rosemary. Give them a call to schedule a tour. 426 S. Massachusetts St., Suite B, 206.747.8400.

##### GLASS DISTILLERY

This distillery produces vodka made from Washington state Sauvignon Blanc and Chardonnay grapes, giving it a distinctive taste. 1712 First Ave. S, 206.686.7210.

##### OOLA DISTILLERY

This Capitol Hill micro-distillery makes a variety of gin, vodka and whiskey. Take a tour—RSVP strongly encouraged—on Saturdays or stop by the sales room Thu.-Sat. 1314 E. Union St., 206.709.7909.

### TWO UNIQUE SEATTLE TOURS



**BENEATH THE STREETS**

Explore underground passageways on this small-group walking history tour through, and below, the streets of Pioneer Square. Open 7 days a week. [www.Beneath-The-Streets.com](http://www.Beneath-The-Streets.com)



**SEATTLE UNTAMED TOUR**

An above ground exploration of the seams, con artists and shady ladies that made Seattle rich during the Klondike Gold Rush. The perfect way to start (or end) your Alaskan cruise. Closed Tues/Wed. [www.SeattleUntamedTours.com](http://www.SeattleUntamedTours.com)

**\$2 DISCOUNT ON ALL TICKETS WITH PROMO CODE WHERE.**  
Enter at website checkout, or mention at our ticket counter!

Both tours leave from 102 Cherry Street at 1st Avenue in Pioneer Square. Take the stairs below the black awning down to our ticket office.  
Reservations encouraged - tours often sell out!

**206.624.1237**

HELLO

*Holiday Escape*

TO VICTORIA, BC



VICTORIA CLIPPER OVERNIGHT GETAWAY DEAL

FROM **\$125** PP/DO

Incl. r/r Victoria Clipper + Hotel

See The Butchart Gardens holiday lights, enjoy Afternoon Tea at the Fairmont Empress, go wine tasting and more! **SAVE** on Victoria Clipper cruise when booking a hotel package!

Clipper Reports Seattle daily at 8am

**CLIPPER VACATIONS**

**CLIPPERVACATIONS.COM**

**206.448.5000**

Private Scenic Helicopter Tours

[atomichelicopters.com](http://atomichelicopters.com)

206.762.3245



Starting at **\$88**p/p

f t i

#### WESTLAND DISTILLERY

Westland Distillery mashes, distills, matures and bottles American single malt whiskey in the heart of the Pacific Northwest. Distilled in the Scottish tradition and matured in the American style, Westland brings a new and distinctly American voice to the world of single-malt whiskey. 2931 First Ave., Suite B, 206.767.7250.

#### WINERIES

##### CHARLES SMITH WINES JET CITY

Head to Georgetown to visit the home of Charles Smith Wines. This spot for music and wine boasts views of Boeing Field and Mount Rainier. The main floor tasting room offers a Northwest feel, while the upstairs space transports you to the early '60s. 1136 S. Albro Place, 206.745.7456.

##### CHATEAU STE. MICHELLE

Built on a 1912 estate owned by a lumber baron, Chateau Ste. Michelle is Washington's oldest winery, with roots that date back to the repeal of prohibition. 14111 NE 145th St., Woodinville, 425.488.1133.

##### COLUMBIA WINERY

This winery has been producing top wines for more than 50 years. In addition to their regular lineup, visit the tasting room to try or buy exclusive tasting room varietals. 14030 NE 145th St., Woodinville, 425.482.7490.

##### THE ESTATES WINE ROOM

This Pioneer Square tasting room is a good stop for wine tasting in the city. Sample flights from Archery Summit or Double Canyon, two Pacific Northwest wineries. The beautifully designed space also has small plates and wines by the glass. Try the Northwest Epicurean Tasting Menu, wine with inventive small plates from London Plane across the street. 307 Occidental Ave. S, 206.623.5835.



## THE GUIDE | Art



### SAM Lights

On December 14, the grounds and pavilion of the Olympic Sculpture Park will be aglow with luminaria and colorful light shows. Enjoy live music and sip hot cocoa as you stroll through. 2901 Western Ave., 206.654.3100.

### ANTIQUES

#### SEATTLE ANTIQUES MARKET

Located on the historic waterfront, this antiques store has more than 6,000 square feet of antique furniture and collectibles. Specializing in 19th and 20th century American antique furniture and accessories for the home and office. Open daily 10 am-6 pm. 1400 Alaskan Way, 206.623.6115.

#### TURNER HELTON ANTIQUES

This beautiful store in Belltown specializes in fine European and American furniture, lighting, accessories and fine art. 2617 Fifth Ave., 206.443.9769.

### ART GALLERIES

#### ARTFORTE GALLERY

This must-see gallery specializes in a mix of international and Northwest contemporary artists working in mediums such as glass, paint, ceramic, print and mixed media. 320 First Ave. S, 206.748.0187.

#### BRYAN OHNO GALLERY

Located in the International District, this gallery features works that challenge traditions, reflect evolving culture and play with the line between art and science. Open W-Sa, noon-5 pm and by appointment. 521 S. Main St., 206.459.6857.

#### DAVIDSON GALLERIES

One of Seattle's longest standing galleries, this space showcases paintings, original prints and sculptures, and is home to the largest collection of original contemporary and antique prints in the Pacific Northwest. Open Tu-Sa 10 am-5:30 pm. 313 Occidental Ave. S, 206.624.1324.

#### JAMES HARRIS GALLERY

Founded in 1999, this gallery shows contemporary painting, drawing, photography, sculpture, video and installation. Find Northwest, national and international artists. 604 Second Ave., 206.903.6220.

#### MAGNUSON PARK GALLERY

This gallery is part of the Sand Point Arts and Cultural Exchange (SPACE) in Seattle's massive Magnuson Park. Exhibits include emerging and established artists, community members and outside collections. 7448 63rd Ave. NE, Building 30, 206.245.5457.

#### VIRAGO GALLERY

Located in West Seattle, this women-owned gallery and shop features work from women artists including exhibits, paintings, necklaces, rings, earrings, bracelets and more. 4306 SW Alaska St., 206.933.2444.



### Tacoma Art Museum

Current exhibitions include American still-life paintings from the past 200 years and "The Dynamic American West," a selection of works that explore the forces that shaped the West. 1701 Pacific Ave., Tacoma, 253.272.4258.

### GLASS ART GALLERIES

#### AVALON GLASSWORKS

This working hot shop and gallery has blown glass influenced by the Northwest landscape. Find vases, bowls, ornaments and sculpture for purchase. The glassblowing schedule is online. Open M-F 10 am-6 pm; Sa-Su 10 am-5 pm. 2914 SW Avalon Way, 206.937.6369.

#### CANLIS GLASS

This 3,500-square-foot gallery in the Northwest Work Lofts features glass art work by local artist Jean-Pierre (JP) Canlis, who is known for his abstract sculptures that evoke the sea. Open Tu-Fr 10 am-6 pm; Sa 10 am-2 pm or by appointment. 3131 Western Ave., Suite 329, 206.282.4428.

#### GLASSHOUSE-STUDIO

This blown-glass studio was founded in 1971. With a goal of creating an environment where artists can produce one-of-a-kind pieces, find unique items pushing the boundaries of blown glass. 311 Occidental Ave. S, 206.682.9939.

#### SEATTLE GLASSBLOWING STUDIO

This downtown studio has a gallery of works, including sinks, lighting and custom projects by its professional

artists-in-residence. The working hot shop is open to the public, while a neighboring cafe serves crepes and offers a view into the shop. The studio also hosts classes. M-Sa 9 am-6 pm; Su 10 am-6 pm. 2227 Fifth Ave., 206.448.2181.

### MUSEUMS

#### BAINBRIDGE ISLAND MUSEUM OF ART

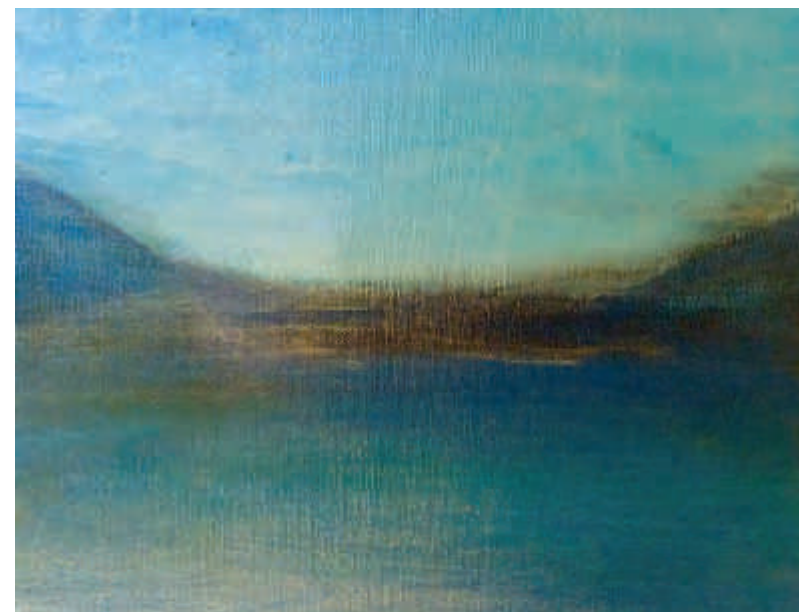
This art museum on Bainbridge Island opened in 2013. See a wide array of works produced in the Puget Sound region. BIMA offers tours, artist talks, panel discussions and interactive experiences. 550 Winslow Way E, Bainbridge Island, 206.842.4451.

#### FRYE ART MUSEUM

Charles and Emma Frye, who came to Seattle in 1888, collected 19th- and 20th-century European and American paintings, the basis for this museum. Museum hours Tue.-Sun., 11 am-5 pm; Thu. until 7 pm. Free admission. 704 Terry Ave., 206.622.9250.

#### MUSEUM OF GLASS

All glass, all the time. This complex houses 13,000 square feet of gallery space, a glassmaking hot shop with demonstrations, and a café. W-Sa 10 am-5 pm; Su noon-5 pm. Third Th until 8 pm, with free admission 5-8 pm. 1801 E. Dock St., Tacoma, 866.468.7386.



**artforte**  
GALLERY & STUDIO

320 1st Ave S, Seattle, WA  
206.748.0187  
Open Daily • artforte.com

Agate Passage  
by Rhonda Hill  
24 x 24 Acrylic/Mixed Media

First Thursday Artwalk  
in Pioneer Square  
Seattle's Art District

**FLURY  
& COMPANY**

Featuring Edward S. Curtis photographic works



Located in historic Pioneer Square  
322 First Avenue S, Seattle  
206.587.0260 • fluryco.com

## Art

### SEATTLE ART MUSEUM

The Seattle home of world-class exhibitions and collections. Permanent collections include artifacts and artwork from Africa, Asia, the Mediterranean, Europe, the Americas and more. They also have a large collection of Native American art. Open W, F-Su 10 am-5 pm; Th 10 am-9 pm. 1300 First Ave., 206.654.3100.

### NATIVE AMERICAN ART

#### FLURY & COMPANY

Vintage photographic works line these gallery walls, most of them by Edward Curtis. Curtis, in his North American Indian Project, began photographing Native Americans in the mid-1890s (including Chief Seal's daughter, Princess Angeline) and sold the images in his Seattle studio. Open M-Sa, 11 am-6 pm. 322 First Ave. S, 206.587.0260.

#### THE LEGACY LTD.

A dealer since 1933, Legacy offers historic and contemporary Northwest Coast Indian and Alaskan Native art. Inside, you'll discover traditional masks, boxes, bowls, jewelry and more. Open by appointment only. 11217 NE 15th St., Bellevue, 425.454.2363.

#### STEINBRUECK NATIVE GALLERY

This gallery specializes in promoting emerging and established Northwest Coast Native artists, featuring a contemporary collection of masks, panels, silver and argillite jewelry and more. 2030 Western Ave., 206.441.3821.

#### STONINGTON GALLERY

For 35 years, this gallery, a member of the Seattle Art Dealers Association, has showcased contemporary masters of the Pacific Northwest Coast. They specialize in glass art, totem poles and masks, wood and metal sculpture, prints and fine jewelry. Open daily. 125 S. Jackson St., 866.405.4485.



## THE GUIDE | Food



### RN74

Part of famed San Francisco restaurateur Michael Mina's empire, this upscale yet cozy spot has a decadent menu of modern French cuisine by new chef Thomas Griese and an outstanding wine list. 1433 Fourth Ave., 206.456.7474.

### BALLARD

#### BALLARD ANNEX OYSTER HOUSE

*Seafood* Serving up fresh seafood seven days a week, you will have plenty to choose from here. From oysters, shellfish, whole Dungeness crab and Maine lobster, to home-made bisques, chowders and soups. 5410 Ballard Ave. NW, 206.783.5410.

### BASTILLE

*French* A neighborhood cafe that transports you to the City of Light, this casual French eatery has locals swooning. D only weekdays. Weekend brunch. 5307 Ballard Ave. NW, 206.453.5014.

### BILLY BEACH SUSHI

*Sushi* A favorite among locals, this sushi joint serves up fresh dishes that are focused on traditional methods of preparing fish. D seven days a week, L Tu-Su. 5463 Leary Ave. NW, 206.257.4616.

### BRUNSWICK & HUNT

*American* This spot serves local, seasonal rustic fare, including things like fresh seafood and housemade sausage. It's named for a tavern—built by Brunswick Balke Collender & Co.—the owners found in Winlock, Wash., and the enormous painting that hangs there, "The Hunt." 1480 NW 70th St., 206.946.1574.

### DELANCEY

*Italian* This restaurant has had locals in a state of fervor over its unbelievable New York-style wood-fired pizzas. Closed Mon. and Tue. 1415 N.W. 70th St., 206.838.1960.

### FULL TILT ICE CREAM

*Ice Cream* You'll find some of the creamiest locally made ice cream in town here. The selection is always changing, but flavors include things like salted caramel, blue moon and Thai iced tea. They also have vegan flavors available. If they have it, try the espresso Oreo. When you're finished with your ice cream, hang out and play pinball: They have a variety of vintage and modern pinball machines. Ballard, 5453 Leary Ave. NW, 206.297.3000; University District, 4759 Brooklyn Ave. NE, 206.524.4406; Columbia City, 5041 Rainier Ave. S, 206.226.2740; White Center, 9629 16th Ave. SW, 206.767.4811.

### HOT CAKES MOLTEN CHOCOLATE CAKERY

*Dessert* You'll find yummy chocolate cake with a melty, gooey middle at this adorable spot. Varieties include a vegan version. Also find milkshakes and other small food and bakery items. 5427 Ballard Ave. NW, 206.420.3431.



### Lost Lake Café & Lounge

The decor at this hip Capitol Hill fave has a "Twin Peaks" vibe, but it's the menu (served 24 hours a day) of comforting diner classics and creative cocktails that keeps locals coming back for more. 1505 10th Ave., 206.323.5678.

### THE WALRUS AND THE CARPENTER

*Seafood* This oyster bar blends the elegance of France with the casual comfort of a local fishing pub. Rustic and light-filled, there is a heated outdoor space and the menu features locally harvested clams and mussels. 4743 Ballard Ave. NW, 206.395.9227.

### BELLEVUE

#### BIS ON MAIN

*Continental* This wildly popular bistro offers French, Italian and New American fare. 10213 Main St., Bellevue, 425.455.2033.

### EL GAUCHO

*American* This swank, nationally recognized restaurant is a mecca for steak, cigar and martini-lovers. 450 108th Ave. NE, Bellevue, 425.455.2715; Seattle, 2505 First Ave., 206.728.1337; 2119 Pacific Ave., Tacoma, 253.272.1510.

### HOKKAIDO RAMEN SANTOUKA

*Japanese* This internationally acclaimed noodle restaurant in Bellevue serves traditional ramen (toppings include pork cheeks, marinated soft-boiled eggs and Kikurage mushrooms) as well as rice bowls, steamed buns and Karaage, Japanese-style deep-fried chicken. 103 Bellevue Way NE, Suite 3, Bellevue, 425.462.0141.

### BELLTOWN

#### THE 5-POINT CAFÉ

*American* This dive bar and diner is one of the oldest watering holes in Belltown, originally opened in 1929. Enjoy hearty, reasonably priced fare at this laid-back eatery 24 hours a day, seven days a week. 415 Cedar St., NW, 206.448.9991.

### PALACE KITCHEN

*Northwest* Try Idaho trout cooked on an applewood rotisserie grill or handmade ravioli at this popular spot from celebrity chef Tom Douglas. D only. 2030 Fifth Ave., 206.448.2001.

### SHIRO'S

*Sushi* Try to grab a seat at the bar (if you're lucky) and enjoy the freshest in top-notch fish, from the Northwest and beyond. D only. 2401 Second Ave., 206.443.9844.

### TAVOLATA

*Italian* Celebrated Seattle chef Ethan Stowell's Italian restaurant is a large modern space centered on a beautiful wooden communal table that serves up delectable house-made pasta. 2323 Second Ave., 206.838.8008.

### UMI SAKE HOUSE

*Japanese* With more than 45 kinds of sake and a menu that includes sushi, crispy calamari

COURTESY RN74, ©HARRIS KENJAR/LOST LAKE CAFE

## Seattle's Most Visited Happy Hour

Breakfast | Lunch | Happy Hour | Dinner | Late Night

where more people who live in Seattle choose to drink, dine and indulge in adult escapism.

Reserve a table at [pesoskitchenandlounge.com](http://pesoskitchenandlounge.com)

Near the Space Needle, 605 Queen Anne Ave North, Seattle | [pesoskitchenandlounge.com](http://pesoskitchenandlounge.com) | 206.283.9353

## Bringing the Big Easy to Seattle: A French Quarter Dining Experience

Breakfast | Lunch | Happy Hour | Dinner | Late Night

Fifth Most Popular Restaurant in the Nation, Tenth Most Popular in the World  
—Trip Advisor's 2013 Traveler's Choice Award

G+ Reserve a table at [toulousepetit.com](http://toulousepetit.com) yelp

Near the Space Needle, 601 Queen Anne Ave North, Seattle | 206.432.9069 | [toulousepetit.com](http://toulousepetit.com)



and octopus carpaccio, Umi ("ocean" in Japanese) offers a laid-back space in which to unwind and indulge. D only. 2230 First Ave., 206.374.8717.

## CAPITOL HILL

### 80Z BURGER & COMPANY

*American* The menu is inspired by American tavern classics, with burgers made from grass-fed beef (the house blend is a mix of sirloin, tri-tip, short-rib and chuck), wild boar, Kobe beef, lamb, fish, free-range turkey or a veggie patty. 1401 Broadway, 206.466.5989; Ballard, 2409 N.W. Market St., 206.782.2491.

### BA BAR

*Vietnamese* This trendy bar and restaurant on Seattle's Capitol Hill serves up Vietnamese street food and handcrafted cocktails. B, L and D daily. 550 12th Ave., 206.328.2030.

### CAFE BARJOT

*Breakfast* This breakfast spot serves up coffee, pastries and egg sandwiches in a casual setting. Everything here is under \$10. Open until 2 pm daily. 711 Bellevue Ave. E, 206.457.5424

### CAFÉ PRESSE

*French* From the visionaries behind Le Pichet, Café Presse serves traditional, unpretentious French fare in a bustling urban space. B, L and D. 1117 12th Ave., 206.709.7674.

### CAPITOL CIDER

*American* This spot on Capitol Hill has 30 rotating taps: 20 ciders and 10 beers. It's also a bottle shop and restaurant that has a 100 percent gluten-free kitchen. Come for things like beef short ribs, duck breast and fish and chips. 818 E. Pike St., 206.397.3564.

### CUPCAKE ROYALE

*Cafes and Bakeries* In their neighborhood cafes, where you can also enjoy aromatic, artisan espresso from Verite Coffee, this beloved local

bakery creates from-scratch, baked-daily artisan cupcakes in flavors that will keep you coming back for more. Made with mostly local and sustainable ingredients, each treat is packed with flavor and charm. Try the salted caramel—we're pretty sure you'll like it! *Capitol Hill*, 1111 E. Pike St., 206.701.9579; *Ballard*, 2052 NW Market St., 206.701.6238; *Madrone*, 1101 34th Ave., 206.701.6240; *West Seattle*, 4556 California Ave. SW, 206.701.6266; *Downtown*, 108 Pine St., 206.443.8674; *Queen Anne*, 1935 Queen Anne Ave. N, 206.285.1447.

### LARK

*New American* Locally sourced vegetables, cheese, charcuterie, grains, fish and meats are focal points of the menu. The upper level of the space is Bitter Raw, Lark's bar, featuring cocktails, crudo and charcuterie. 952 E. Seneca St., 206.323.5275.

### MAMNOON

*Middle Eastern* This spot in Capitol Hill serves a modern take on Middle Eastern cuisine. There are lots of small plates to share with a group, so select a few and find a new favorite dish. If you're short on time, Mamnoon Street is a walk-up window for to-go items. 1508 Melrose Ave., 206.906.9606.

### MOJIJI

*Japanese* This hip sushi haven stands out with its cool ambiance and handcrafted traditional Japanese dishes that are specially prepared from Northwest ingredients. D only. 1522 12th Ave., 206.457.4068.

### MONSOON

*Modern Vietnamese* This Capitol Hill spot serves sophisticated Vietnamese dishes with a Pacific Northwest influence. In addition to lunch and dinner, there is a dim sum brunch on the weekends. Menus change frequently, but expect things like a catfish claypot and barbecued

pork spare ribs. 615 19th Ave. E, 206.325.2111; 10245 Main St., Bellevue, 425.635.1112.

### PLUM BISTRO

*Vegan* This cozy spot has some of the best vegan food in the city. Meat-eaters won't miss a thing. Try the Spicy Cajun Mac 'n' Yease or the Pulled BBQ Seitan Burger. Soy-free and gluten-free options are clearly marked on the menu. 1429 12th Ave., 206.838.5333.

### POPPY

*New American* Chef Jerry Traunfeld (formerly of award-winning, world-renowned restaurant The Herbfarm) is serving up a new version of the tasting menu: the best, seasonal Northwest ingredients presented Indian-style on a thali, a tray featuring 10 small servings of delectable dishes. 622 Broadway E, 206.324.1108.

### SITKA AND SPRUCE

*Northwest* This open and stylish space focuses on a menu of fresh vegetables and meats, and includes an extensive wine list. Their own sourdough bread is baked fresh daily. 1531 Melrose Ave. E, 206.324.0662.

## DOWNTOWN

### ANAR

*Middle Eastern* This cute spot from the owners of Mamnoon features fresh juices and delicious vegetarian items—try the Balila, a chickpea soup that packs a ton of flavor, or the Mujadara with green lentils, brown rice, pickled turnips and local favorite Ellenos yogurt. L and D. 2040 Sixth Ave., 206.453.4654.

### CAFÉ FRIEDA

*American* Located in the Frye Art Museum, this inviting and spacious café allows you to enjoy a wide variety of food with your art. If the sun is out, head outside to the courtyard and enjoy a class of wine during the café's happy hour Thursdays from 3-6 pm. 704 Terry Ave., 206.432.8210.

## THE CAPITAL GRILLE

*Steakhouse* The historic 1910 Cobb Building is home to this restaurant, nationally renowned for their dry-aged steaks and an award-winning wine list. 1301 Fourth Ave., 206.382.0900.

## HAMANASU

*Japanese* This teppanyaki restaurant's skilled chefs create a show during dinner. Watch them cook steak, chicken, vegetables, seafood and more, or check out the all-you-can-eat sushi lunch buffet for 15.95. L (M-F), D (nightly). 1200 Fifth Ave., 206.682.4686.

## IL FORNAIO

*Italian* What started as a bakery in Italy in 1972, cozy Il Fornaio now serves an array of grilled meats, wood-fired pizzas, pastas and risottos, and other traditional entrees. L and D. Pacific Place, 600 Pine St., 206.264.0994.

## LECOSHO

*Northwest* Tucked away on Harbor Steps, this popular spot offers innovative small plates, entrees and a not-to-be-missed happy hour. L and D. 89 University St., 206.623.2101.

## LOLA

*Mediterranean* Celebrity chef Tom Douglas' Mediterranean and Greek-tinged menu boasts kebabs, chickpea fries and dips. The breakfast, including housemade sausage, is a local favorite. B, L and D; weekend brunch. 2000 Fourth Ave., 206.441.1430.

## LONG PROVINCIAL

*Vietnamese* This sleek restaurant and bar serves authentic regional Vietnamese dishes, many of which are rarely found stateside. Try their various satay, crepe or rice cake options, and don't forget one of their specialty drinks. L and D. 1901 Second Ave., 206.443.6266.

## MAE PHIM

*Thai* Locals and downtown lunchers swear by this no-fuss

Thai spot where the food is spicy, fresh and tasty, and service is always swift. 213 Pike St., 206.623.7453; Pioneer Square, 94 Columbia St., 206.624.2979.

## TAP HOUSE GRILL

*American* This popular restaurant serves classic American fare like pizzas and burgers and boasts 160 beers on tap. Try the barbecue sliders. L and D. 1506 Sixth Ave., 206.816.3314.

## TOP POT DOUGHNUTS

*Cafes and Bakeries* What is better than a cup of freshly brewed coffee paired with a sweet, scrumptious doughnut? Nothing. Top Pot Doughnuts understands that, which is why their hand-forged doughnuts and hand-roasted coffee are popular with locals and visitors alike. *Flagship Downtown*, 2124 Fifth Ave., 206.728.1966; *Capitol Hill*, 609 Summit Ave. E,

206.323.7841; *Downtown*, 720 Third Ave., 206.454.3694; *South Lake Union*, 590 Terry Ave. N, 206.995.8296; 10600 NE Ninth Place, Bellevue, 425.457.7440.

## PIKE PLACE MARKET

*Athenian Seafood Restaurant* *Seafood* The menu at this historic market favorite includes daily specials like fried-oyster fettuccine and Northwest king salmon with fresh roasted pumpkin-mashed potatoes. B, L (daily); D (M-Sa). 1517 Pike Place, 206.624.7166.

## CHAN

*Korean* This Korean gastropub at Pike Place Market uses both local and international ingredients in the dishes. Order a few and share family-style. Be sure to try a cocktail—there are a number of Asian liqueurs that pair well with dinner. D (Tu-Sa). 86 Pine St., 206.443.5443.

## EMMETT WATSON'S OYSTER BAR

*Seafood* Oysters come in all varieties here—on the half shell, broiled or served with chips. L and D. 1916 Pike Place, Suite 16, 206.448.7721.

## HONEST BISCUITS

*Breakfast* Honest Biscuits' Art Stone started making biscuits with his grandmother when he was 4. Find the traditional buttery biscuit, but also find options with a Northwest spin—like the popular MacGregor with Bavarian Meats bacon, Beecher's Flagship cheese and caramelized onions—and seasonal specials. 93 Pike St., Suite 201, 206.682.7179.

## IL BISTRO

*Italian* Enjoy pastas, fresh seafood and rack of lamb in the cozy, candlelit dining room, or head to the bar for martinis, single-malt scotches, bour-

bons and grappas. D only. 93A Pike St., 206.682.3049.

## JARRBAR

*Spanish* Owner Bryan Jarr found inspiration for this intimate spot in Pike Place Market during travels through Portugal and Northern Spain, as well as his love of the sea. Find cured seafood and meat paired with cocktails, Iberian and Pacific Northwest wine, and beer. 1432 Western Ave., 206.209.2239.

## LOWELL'S

*American* Spectacular views of the Olympics and Puget Sound are a major attraction here, where the breakfast is legendary. B, L, Bar until 9 pm, 8 pm on Su. 1519 Pike Place, 206.622.2036.

## MAXIMILIEN

*French* This charming, Parisian-style spot serves French fare made with fresh

**2016 James Beard Semi-Finalist** for Best New Restaurant Seattle's 100 very best restaurants 2016 | Seattle Met 10 Hottest Bars in Seattle | Zagat Newsletter Hottest Restaurants in Seattle Right Now | Eater

**206. 257. 4259 501 STADIUM PLACE SOUTH SEATTLE WA. 98104** [girinseattle.com](http://girinseattle.com)





## DINING

# PIKE PLACE MARKET

SINCE 1907, PIKE PLACE MARKET has connected producers and consumers. Today, in addition to its farmers market origins, the market is also home to a huge variety of bars and restaurants. After exploring the historic shops and vendor stands, stop into one of the market's fantastic dining establishments for lunch, dinner or a snack. You'll find delicious, fresh food as well as unbeatable surroundings. From seafood to market-fresh vegetables, there is plenty to satisfy hungry visitors.

**Maximilien**  
lunch, brunch,  
dinner & cocktails

Reserve Online: [MaximilienRestaurant.com](http://MaximilienRestaurant.com)

**PIKE PLACE MARKET**  
206-682-7270

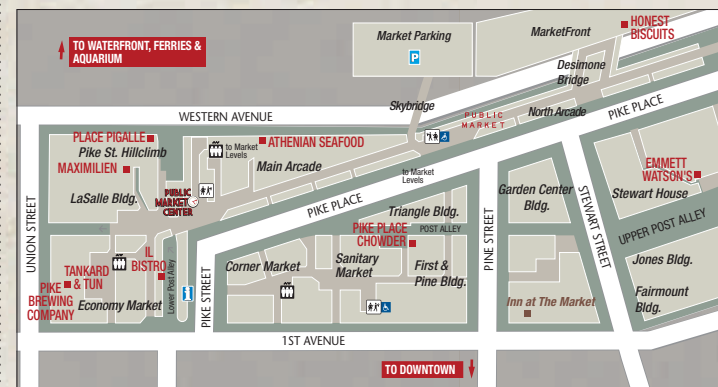
**TWO GREAT RESTAURANTS**  
Oysters on the half shell

**TANKARD & TUN**  
LOCAL BEERS, WINES, CIDERS, AND SPIRITS  
PIKE PLACE ALE BATTERED FISH & CHIPS  
NW SEAFOOD  
OYSTERS, CLAMS, CIOPPINO, SALMON

Beer Brewed On Premise

**THE PIKE PUB**  
FAMILY OWNED  
© 1989  
Brewery Tours Microbrewery Museum

[pikebrewing.com](http://pikebrewing.com)  
1415 1ST AVE - SEATTLE



## ON OUR 38TH YEAR! THANK YOU SEATTLE!

To Your Health, Seattle. "Eat MORE Oysters"  
-Emmett Watson

In Pike Place Market, 1916 Pike Place  
(one entrance north of Starbucks)  
206.448.7721

**Fresh Shucked Oysters**  
Pebble Beach • Penn Cove Select  
Fanny Bay • Deer Creek  
Quilcene • Evening Cove  
Hunter Point • Gold Creek  
Seasonal Rotating Selection



## MUST TRY

**Athenian Seafood Restaurant**

The menu at this historic Market favorite includes daily specials like oyster omelets and salmon and chips. Breakfast, lunch and dinner.

**Emmett Watson's Oyster Bar**  
Oysters come in all varieties here—on the half shell, broiled or fried and served with chips. Lunch and dinner.

**Honest Biscuits**

Find the traditional buttery biscuit, but also find options with a Northwest spin, including the Pike Place with Beecher's Flagship cheese. Breakfast, lunch and dinner.

**IL Bistro**

Enjoy pastas, fresh seafood and rack of lamb in the cozy, candlelit dining room, or head to the bar for martinis, single-malt scotches, bourbons and grappas. Dinner only.

**Maximilien**

This charming, Parisian-style spot serves French fare made with fresh Market ingredients. Enjoy sweeping views of Puget Sound through large picture windows, or take in the beauty on the outdoor patio. Lunch and dinner.

**Pike Brewing Company**

This brewpub's menu features a variety of award-winning beers brewed on location and tasty dishes made with fresh Pike Place Market ingredients. Lunch and dinner.

**Pike Place Chowder**

Comfort food, Pacific Northwest style. In addition to the various chowder offerings, there are salads and sandwiches. Lunch and dinner.

**Place Pigalle**

This romantic bistro features Northwest seafood, farm-fresh produce and more than 400 wines. Lunch and dinner.

**Tankard & Tun**

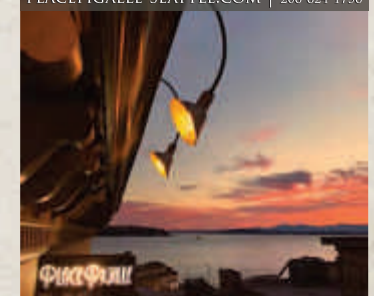
This new concept from Pike Brewing Company pairs seafood dishes with handcrafted beers. Check out the views from the deck for great summer dining. Lunch and dinner.



**HONEST BISCUITS**

NOW AT  
**PIKE PLACE MARKET**  
HONEST TO GOODNESS  
KICK-ASS BISCUITS  
& MORE [www.honestbiscuits.com](http://www.honestbiscuits.com)

[PLACEPIGALLE-SEATTLE.COM](http://PLACEPIGALLE-SEATTLE.COM) | 206-624-1756



IN THE PIKE PLACE MARKET

## Market Fresh Italian

**IL BISTRO**  
In the Pike Place Market

Open Every Night • Dinner 5:30-10pm  
Classic bar with Happy Hour daily  
93A Pike St. • 206-682-3049



[www.ilbistro.net](http://www.ilbistro.net)

SAVOR THE AMAZING FLAVORS OF THE PACIFIC NORTHWEST

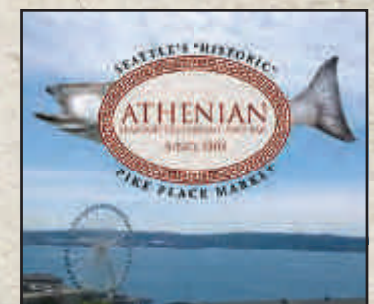
**Pike Place CHOWDER**

SERVING EIGHT VARIETIES DAILY

**PIKE PLACE MARKET**  
1530 POST ALLEY  
(206) 767-2537

**PACIFIC PLACE CENTER**  
400 PINE ST., 4TH FLOOR  
(206) 434-3500

[PIKEPLACECHOWDER.COM](http://PIKEPLACECHOWDER.COM)



Breakfast, Lunch & Dinner made with the freshest ingredients from the Pacific Northwest.

Enjoy breathtaking views of the Puget Sound, the snow-capped Olympic Mountains and ferry traffic in Elliott Bay, all from your cozy window side booth.

Located in the Main Arcade  
206-624-7166 • [athenianseattle.com](http://athenianseattle.com)



market ingredients. Enjoy sweeping views of the Puget Sound through large picture windows, or take in the beauty on the outdoor patio. L and D. Sunday brunch. *81A Pike St., 206.682.7270.*

**PIKE BREWING COMPANY**  
*American* Located in Pike Place Market, this brewpub's menu features a variety of award-winning beers brewed on location, and tasty dishes made with fresh Pike Place Market ingredients. *1415 First Ave., 206.622.6044.*

**PIKE PLACE CHOWDER**  
*Northwest* Comfort food, Pacific Northwest style. In addition to the various chowder offerings, there are salads and sandwiches. Menus vary slightly by location—visit the Pike Place Market spot for vegan chowder. *Pike Place Market, 1530 Post Alley, 206.267.2537; Pacific Place, 600 Pine St., 206.838.5680.*

**PLACE PIGALLE**  
**RESTAURANT AND BAR**  
*Northwest* This charming, romantic bistro features Northwest seafood, farm-fresh produce and an award-winning wine list. L and D. *81 Pike St., 206.624.1756.*

**RACHEL'S GINGER BEER**  
*American* Handcrafted with love from fresh lemons, strong roots and organic sugar cane, Rachel's ginger beer is a Seattle favorite. Visit the flagship store for a refreshing drink, and also enjoy small bites at the Capitol Hill location. *1530 Post Alley; Capitol Hill, 1610 12th Ave.*

**RED CEDAR & SAGE**  
*Northwest* Enjoy Northwest cuisine made with fresh ingredients from the local markets at this spot in Pike Place Market. Grab a seat in the glass-walled atrium and enjoy a cocktail or glass of wine with the meal. L, D and weekend brunch. *1501 Pike Place, Suite 200, 206.538.0377.*

**TANKARD & TUN**  
*Fish and Seafood* This new eatery within Pike Brewing Company pairs house locally sourced seafood dishes with handcrafted beers—not to mention fantastic water views. The two-story restaurant includes an oyster bar and a relaxed beer deck. *1415 First Ave., 206.622.6044.*

**PIONEER SQUARE**  
**DOC MAYNARD'S PUBLIC HOUSE**  
*American* The Underground Tour's "retro Western" restaurant and bar in Pioneer Place Park, Pioneer Square, is popular among locals and visitors (kids too!) for its affordable menu. Try one of the delicious salmon entrées or a tasty burger. *612 First Ave., 206.682.4646.*

**GIRIN**  
*Korean* This steakhouse bar, not far from the sports stadiums, brings contemporary cooking techniques to traditional Korean food. Housemade kimchi, noodles and dumplings accompany locally sourced proteins. L (M-F), D (nightly). *501 Stadium Place S., 206.257.4259.*

**IL CORVO**  
*Italian* Passion for the craft of homemade pasta is apparent in this casual lunch-only destination. The menu features three pastas a day, depending on what the chef finds in the market that morning. *217 James St., 206.538.0999.*

**QUEEN ANNE**  
**5 SPOT**  
*American* This diner serves comfort food in a dining room full of amusing kitsch. Save room for the baked-to-order desserts. B, L and D. *1502 Queen Anne Ave. N., 206.285.7768.*

**CANLIS**  
*Northwest* This beloved institution offers steak and seafood and has been a repeat recipient of Wine Spectator magazine's Grand Award.

Reservations recommended. D only. *2576 Aurora Ave. N., 206.283.3313.*

**COLLECTIONS CAFE**  
*Northwest* The menu at this café inside Chihuly Garden and Glass takes its inspiration from Chihuly's travels and adds a Northwest twist, celebrating what is fresh and local. *305 Harrison St. N., 206.753.4935.*

**EDEN HILL**  
*Eclectic* This Queen Anne spot has inventive dishes from celebrated chef-owner Maximilian Petty. Be sure to try his signature crispy pig-head candy bar, made with merlot cabbage, Serrano, fermented black bean and pear. D (Tu-Su). *2209 Queen Anne Ave., 206.708.6836.*

**PESO'S KITCHEN & LOUNGE**  
*Mexican & Tex-Mex* The Latin-Mexican menu offers such items as carne asada and chicken enchiladas, and crab and avocado spring rolls. *605 Queen Anne Ave. N., 206.283.9353.*

**TOULOUSE PETIT**  
*Cajun* This award-winning restaurant offers a menu brimming with New Orleans favorites, including classic shrimp creole, gumbo and jambalaya. *601 Queen Anne Ave. N., 206.432.9069.*

**SOUTH LAKE UNION**  
**TUTTA BELLA**  
*Pizza* This Neapolitan pizzeria is a local fave! *South Lake Union, 2200 Westlake Ave., Suite 112, 206.624.4422; Wallingford, 4411 Stone Way N., 206.633.3800; 15600 NE Eighth St., Suite J1, Bellevue, 425.502.7402.*

**UNIVERSITY DISTRICT**  
**KIDD VALLEY**  
*American* This tasty fast-food burger joint has locations in both CenturyLink Field and Safeco Field, as well as near University Village. *5502 25th Ave., 206.522.0890.*

**WATERFRONT**  
**THE ALASKAN SOURDOUGH BAKERY**  
*Bakery/Deli* This spot on the waterfront carries on the tradition of baking authentic sourdough bread. Stop in for a cold sandwich, hot panini or soup. There are also loaves of bread, dinner rolls, bread bowls and homemade cookies to go. *1301 Alaskan Way, 206.838.5313.*

**ANTHONY'S PIER 66 AND BELL STREET DINER**  
*Seafood* This waterfront building is home to three seafood restaurants: upscale Pier 66, laid-back Bell Street Diner and a grab-and-go open-air bar where you can get delicious, quick options like fish tacos. If you have the time, we recommend you grab a seat upstairs and enjoy outstanding views of Puget Sound. *2201 Alaskan Way, 206.448.6688.*

**AQUA BY EL GAUCHO**  
*Seafood* Indulge in fresh seafood or 28-day dry-aged steaks prepared in the exhibition kitchen. If it's nice out, sit on the deck and watch the sun set. *2801 Alaskan Way, Pier 70, 206.956.9171.*

**THE CRAB POT**  
*Seafood* This Waterfront favorite is where you come for a no-fuss seafood feeding frenzy. They'll toss the food on the table, no utensils required. Dig in. *1301 Alaskan Way, 206.624.1890.*

**ELLIOTT'S OYSTER HOUSE**  
*Seafood* Elliott's has been serving Seattle seafood since 1975. Stop in for more than 30 varieties of fresh oysters, custom-smoked Northwest seafood and an award-winning wine program. The restaurant has a deep commitment to sustainability and only serves wild, sustainable salmon. *1201 Alaskan Way, 206.623.4340.*

**THE FISHERMAN'S RESTAURANT & BAR**  
*Seafood* This waterfront staple, located on Pier 57, offers

Northwest seafood options such as clam chowder, steamed mussels and tasty halibut and chips. Enjoy great views on the deck and come by for happy hour, M-F 3:30-5:30 pm. *1301 Alaskan Way, Pier 57, 206.623.3500.*

**THE FRANKFURTER**  
*Hot Dogs* Find a variety of hot dogs and sausages (including Seattle-style dogs), salads, chili, cookies and drinks at this walk-up spot on Pier 54. It's the perfect handheld treat while strolling the rest of the waterfront. *1023 Alaskan Way, 206.622.1748.*

**THE ICE CREAMERY**  
*Ice Cream Shop* Not much beats ice cream along the waterfront. Stop at this spot for housemade ice cream and soft serve. They use fresh ingredients and have hand-made waffle cones. There are also milkshakes, sundaes and

root-beer floats. *1301 Alaskan Way, 206.623.8600.*

**IVAR'S ACRES OF CLAMS**  
*Seafood* This Seattle institution was recently revamped to be bigger, brighter and airier. Enjoy classic favorites and unique chef preparations of seafood inside, or enjoy spectacular views of Elliott Bay from the new waterside patio. *www.ivals.com. 1001 Alaskan Way, Pier 54, 206.624.6852.*

**RED ROBIN**  
*Burgers* This family-friendly spot has a large selection of burgers. Also find appetizers (try the tower of onion rings), salads and desserts. *1101 Alaskan Way, 206.623.1942.*

**THE SALMON COOKER**  
*Seafood* Stop by this streetside cafe for Alderwood-smoked salmon, halibut and cod, as well as classic fish and chips and clam chowder. Also find

fresh oysters, Dungeness crab, shrimp and crab cocktails and beer. *1301 Alaskan Way, 206.623.8600.*

**WEST SEATTLE**  
**CIRCA**  
*American* This small restaurant has great food and a good selection of rotating beer on tap. *2605 California Ave. SW, 206.923.1102.*

**MAHARAJA**  
*Indian* This restaurant on bustling California Avenue offers tasty Indian fare like mango chicken and tandoori. L and D. *4542 California Ave. SW, 206.935.9443.*

**MARINATION MA KAI**  
*Fusion* Hawaiian-Korean fusion cuisine with incredible views await at this spot in West Seattle. Try the pork katsu sandwich, the kimchi fried rice bowl or fish and

chips. B, L and D. *1660 Harbor Ave. SW, 206.328.8226.*

**MISSION**  
*Mexican & Tex-Mex* You'll happily say hola to the margaritas at this dark and swanky restaurant-cum-lounge. More than just a stylish place for beautiful people, Mission offers good Mexican style food, including vegan and gluten-free options. *2325 California Ave. SW, 206.937.8220.*

**SALTY'S SEAFOOD GRILLS**  
*Seafood* Salty's on Alki offers an unbeatable view of the skyline. Its weekend brunch has won national awards. With a commitment to sustainability, you'll enjoy fresh seafood from local farmers and fisheries. L and D; weekend brunch. Reservations recommended. *1936 Harbor Ave. SW, 206.937.1600; Redondo Beach, 28201 Redondo Beach Drive S, Des Moines, 253.946.0636.*

**umi**  
**SAKE HOUSE**

Daily: 4pm - 2am  
Kitchen: 4pm - 12am  
happy hour daily: 4pm - 8pm  
late night sunday-thursday: 10:30pm - close

Downtown Seattle's premier sushi and sake destination

Over 50 premium sake imports and traditional sushi/sashimi offerings, soups, salads, grilled appetizers & fusion & traditional rolls

2230 1ST AVENUE SEATTLE, WA | 206 374 8717  
[WWW.UMISAKEHOUSE.COM](http://WWW.UMISAKEHOUSE.COM)

GIRIN mami



# TASTE SEATTLE

## PIKE PLACE CHOWDER

On a chilly, blue-sky morning in 2003, Larry Mellum opened a little chowder house in Seattle's famous Pike Place Market. With the briny aromas wafting down the cobblestone streets, visitors began lining up for the rich flavors of tender clams and seafood simmered with the freshest market vegetables and seasonings. Today, Larry welcomes visitors from across the country, and around the world, who come to savor the small, fragrant batches of Pacific Northwest flavors, served with the same love and meticulous care as the day he opened his door for the very first time. Open daily, 11:00 a.m.

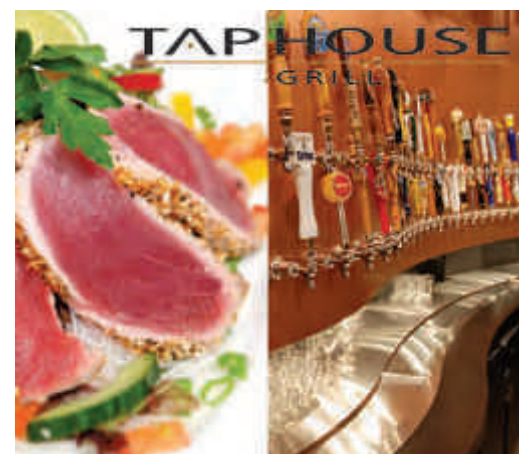
**Pike Place Mkt. 1530 Post Alley. 206.267.2537**  
**Pacific Place Ctr. 600 Pine St. 206.838.5680**  
**pikeplacechowder.com**



## HAMANASU

Located in the heart of downtown, Hamanasu is establishing itself as the premiere Teppanyaki restaurant. Watch as your own personal chef performs the ancient art of Teppanyaki, preparing a meal that will dazzle your eyes as well as your taste buds. Listen as razor-sharp blades slice and dice through tender steak and juicy chicken. Take in the aroma as savory vegetables, shrimp and lobster sizzle before your eyes. Or enjoy our sushi bar featuring a lunch All-You-Can-Eat sushi buffet! Lunch Mon-Fri, Dinner nightly, Happy Hour Mon-Fri 5-7:30pm.

**1200 5th Avenue, Seattle 206.682.4686**  
**hamanasuseattle.com**



## TAP HOUSE GRILL

Ideally located adjacent to the convention center in downtown Seattle, Tap House Grill offers the largest beer selection in the Northwest. In addition to 160 beers on tap, enjoy the unique one-of-a-kind food menu with delicious bold flavors that pair well with any beer style. Tap House Grill gives beer the respect it deserves featuring hard-to-find beers and some of the finest microbrews from the region. Also offering a full cocktail menu along with friendly service in a cool, urban setting. Plenty of big screens make it a sports lover's favorite venue to view any game. Open for lunch, dinner, happy hour and late night dining until midnight or later.

**1506 6th Ave, Seattle, 206.816.3314, taphousegrill.com**

## ANTHONY'S PIER 66 & BELL STREET DINER

For contemporary and sophisticated waterfront dining, Anthony's Pier 66 offers the finest fresh Northwest seafood and award-winning Washington wines, attentive service, and spectacular views of the Seattle skyline, Mount Rainier and Elliott Bay. Anthony's Pier 66 is a great place to celebrate a special occasion, and downstairs is Anthony's Bell Street Diner for a casual, family-friendly lunch or dinner. Visitors also enjoy Anthony's Fish Bar for quick-dining seafood selections. Complimentary valet and validated parking.

**2201 Alaskan Way, Pier 66, Seattle**  
**206.448.6688, anthony's.com**



## CAPITOL CIDER

Capitol Cider, the country's largest independent cider bar, is located at Pike Street and Broadway in the heart of Capitol Hill. We are a two-story restaurant, bar, bottle shop, game room and live arts programming venue. We offer 33 ciders and beers on tap and more than 200 hard ciders in flights and in bottles. Craft cocktails, wine and mead round out our beverage selection. Our menus of modern pub fare are made to order in our scratch kitchen, and 100% gluten free. We offer weekday lunch, nightly dinner, weekend brunch and two happy hours.

**818 E. Pike St., Seattle**  
**206-397-3564 www.capitolcider.com**

## DINING OUT IN SEATTLE

Welcome to dining out in the Great Northwest. Our restaurants feature the best of what our rich region has to offer from the famed Copper River Salmon, to the freshest oysters, meats and produce from sustainable sources. All capped off with wines from the second largest producer in the country, Washington State. It's all here and ready for the eating. Enjoy! For more information dining in Seattle and other Where cities go to [www.wheretraveler.com](http://www.wheretraveler.com). All WHERE listings are also accessible exclusively on iPhone.







## Miracle at Rob Roy

Sleek Belltown cocktail destination Rob Roy is hosting Miracle, a pop-up bar featuring a new holiday-themed drink every day through Christmas Eve. Think of it as a boozy advent calendar! 2332 Second Ave., 206.956.8423.

### BARS

#### 9LB HAMMER

Keeping with the feel of its Georgetown neighborhood, the 9lb has a solid, charming, working-class vibe. Vintage fixtures, cozy couches and a pool table set the scene for stiff drinks and pints of beer, many of which are delivered from the Georgetown Brewing Company, located just across the street. 6009 Airport Way S, 206.762.3373.

#### AL'S TAVERN

Located on the eastern edge of Wallingford, this neighborhood favorite is a great, casual spot for a couple of pints and conversation. 2303 N. 45th St., 206.545.9959.

#### ARTUSI

This modern space honors Italian aperitivo culture (the drinking of appetite-whetting liqueurs) with classic Italian cocktails and small plates. 1535 14th Ave., 206.678.2516.

#### BATHTUB GIN & CO

This speakeasy-style bar serves up a variety of creative cocktails, and also has an excellent gin selection (of course). Look for the wooden door 50 feet north of Blanchard St. 2205 Second Ave., 206.728.6069.

### BELLTOWN PUB

Stop in to this neighborhood pub and grab a beer and some pub fare. While the beer list isn't huge, it is thoughtfully selected. Expect to see a few dogs about—the pub is dog friendly, with a special dogs-only menu. 2322 First Ave., 206.448.6210.

### BEVERIDGE PLACE PUB

With 36 taps serving beer and cider, there's something for everyone at this local favorite in West Seattle. While there's no food here, there is a book of menus if you'd like to order delivery from a nearby restaurant. 6413 California Ave. SW, 206.932.9906.

### THE BOOKSTORE BAR & CAFÉ

Adjacent to the Alexis Hotel, this stylish bar has a large selection of single malt Scotch whiskies and American bourbons. Overwhelmed? Enjoy one of their whiskey flights. The menu features local ingredients in everything from light snacks to hearty meals. 1007 First Ave., 206.624.3646.

### CAN CAN

Tucked away in Pike Place Market, Can Can is a cocktail lounge-cum-vaudeville theater where the waitresses double as cancan dancers. 94 Pike St., Suite 11, 206.652.0832.



## Tula's Restaurant & Jazz Club

Along with quality live performances from the best and brightest local musicians every night, this Belltown venue offers a full-service restaurant serving Mediterranean and American cuisine. 2214 Second Ave., 206.443.4221.

### CANON

This tiny spot on Capitol Hill has an incredible selection of liquor and bitters. Try one of the spirit flights, or just ask the bartender to make something with your spirit of choice. Canon only accommodates parties of four or fewer. 928 12th Ave.

### COMET TAVERN

A classic Capitol Hill spot with bar favorites like sloppy joes, fried chicken sandwiches and nachos. Happy hour starts at 4 pm Mon.-Fri. There are also pool tables, pinball and skeeball. 922 E. Pike St., 206.323.5678.

### E. SMITH MERCANTILE

Tucked behind the shelves of handmade home decor, gifts and apothecary items the Back Bar offers craft cocktails and small bites. Ask staff about their occasional cooking and bartending classes. 208 First Ave. S, 206.641.7250.

### FLATSTICK PUB

This craft-beer bar has two locations: one in Kirkland and one in Pioneer Square. Find 24 taps of Washington state beer and cider—and also sandwiches, wraps and salads. However, you really go for the indoor, nine-hole mini-golf course. The Kirkland location is family friendly until 7 pm, while the Pioneer Square spot is 21-and-older all hours.

Book a tee time online or give them a call. 15 Lake St., Suite 100, Kirkland, 425.242.1618; 240 Second Ave. S, 206.682.0608.

### LINDA'S TAVERN

Probably the most universally beloved Capitol Hill bar, Linda's has plenty of tables, a great outdoor patio, lots of wood and taxidermy and an always diverse mix of people. Great burgers and Bloody Marys, too. 707 E. Pine St., 206.325.1220.

### OLIVER'S TWIST

This Phinney Ridge nightspot serves creative and traditional cocktails, and innovative small plates such as mini-grilled cheese sandwiches and addictive garlic truffled popcorn. 6822 Greenwood Ave. N, 206.706.6673.

### QUALITY ATHLETICS

From Chef Josh Henderson comes this full-service sports bar in Pioneer Square. Tall boys, draft beer and cocktails meet upscale bar food (think lamb Philly Cheesesteaks, duck wings and whole-fish tacos) including brunch on the weekends. With plenty of flat screens, an outdoor area and fire pits, there are plenty of options for watching the game. 121 S. King St., 206.420.3015.

MELISSA HOM/MIRACLE BAR; TULA'S

### RUMBA

This rum bar has Tiki cocktails, punches and classics from the Caribbean, as well as an island-inspired menu with things like empanadas, jerk chicken and a Cuban sandwich. 1112 Pike St., 206.583.7177.

### THE SAINT

This hot pink spot is popular with locals for after-work tequila and mezcal flights. 1416 E. Olive Way, 206.323.9922.

### SUITE 410

This small spot does cocktails right. Cozy up to the bar or people-watch while you relax at the front window. 410 Stewart St., 206.682.4101.

### TAVERN LAW

This hopping bar was voted one of the 25 Best Bars in the country by GQ magazine. Enjoy storied cocktails made with skill and flare. Ask about getting a seat in their

speakeasy-style upstairs bar, Needle and Thread. 1406 12th Ave., 206.322.9734.

### TRIANGLE SPIRITS

A popular happy-hour spot, Triangle Spirits is housed in a unique triangle-shaped building in Fremont. Chic interior, hip crowd, good drinks, tasty nibbles. 3507 Fremont Place N, 206.632.0880.

### UNICORN

This carnival-themed bar has taxidermy along the walls, and the downstairs bar, Narwahl, has a small arcade and stage for shows. 1118 E. Pike St., 206.325.6492.

### ZIG ZAG CAFÉ

Located on the Pike Street Hill Climb, this local favorite is a cozy bar with handcrafted drinks. 1501 Western Ave., Suite 202, 206.625.1146.

### COMEDY

#### THE COMEDY UNDERGROUND

This Seattle comedy staple offers weekly open mics featuring local performers of all experience levels. Big-name comedians headline from time to time, while a weekly jam showcases up-and-comers. 109 S. Washington St., 206.628.0303.

### JET CITY IMPROV

Improv achieves new heights in this fast-paced, audience-approved show. Shows every weekend, call for specific times. 5510 University Way NE, 206.325.8291.

### UNEXPECTED PRODUCTIONS

TheatreSports is a popular, improvisational-comedy show based on audience suggestions and scored by a panel. Tickets \$10-\$15. See website for other shows. Market Theater, 1428 Post Alley, 206.781.9273.

### DANCE CLUBS

#### ASTON MANOR

SoDo's Aston Manor dance club plays an eclectic mix of top 40, EDM and trance. 2946 First Ave. S, 206.382.7866.

#### BALTIC ROOM

Beautiful people pack this stylish joint nearly every night of the week (closed Wed.), seeking its diverse range of dance music. The elegant decor reflects the glory days of lounges in the 1940s and '50s. Some of Seattle's top DJs spin dance nights here. 1207 Pine St., 206.625.4444.

#### CENTURY BALLROOM

Located on the second floor of the old Oddfellows Hall on Capitol Hill, Century is a beautiful, spacious ballroom restored to its original grandeur, true to its name. On any given night, you can come and dance swing, salsa or waltz, and lessons are also available. 915 E. Pine St., 206.324.7263.

#### TRINITY NIGHTCLUB

This ornate, two-level labyrinth houses three main areas

and a VIP room; each space is decorated in a unique theme. Two dance floors, a state-of-the-art sound and lighting system, and internationally acclaimed DJs keep the crowds entertained. 111 Yesler Way, 206.447.4140, [trinitynightclub.com](http://trinitynightclub.com).

### GAY & LESBIAN NIGHTLIFE

#### THE CUFF

The Cuff is well-known among those who love leather, but the complex—multiple dance floors, four bars, a big deck—attracts a diverse, fun-loving crowd. 1533 13th Ave., 206.323.1525.

### NEIGHBOURS

Diverse crowds from done-up drag queens to buttoned-down techies groove to high-energy music. A mixed crowd of gay and straight patrons show off moves on the dance floor. 1509 E. Broadway Ave., 206.324.5358.

### R-PLACE BAR AND GRILL

This venue offers three floors of entertainment. The main floor has a video bar; the second floor is all about pool, pinball and video games; and on top is a sports lounge. On Friday and Saturday nights, the dance floor is hopping. 619 E. Pine St., 206.322.8828.

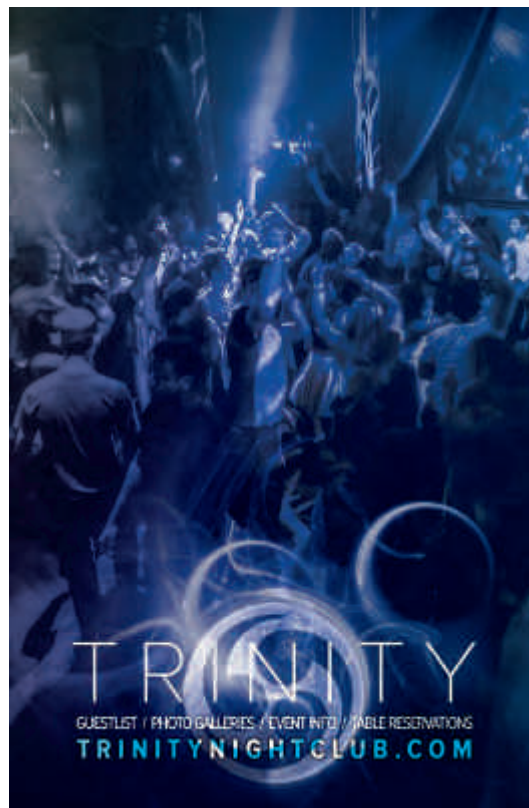
### JAZZ & BLUES CLUBS

#### DIMITRIOU'S JAZZ ALLEY

This intimate, upscale club and lounge with Northwest cuisine hosts some of the biggest names in jazz. Make sure to check out the stellar lineup. 2033 Sixth Ave., 206.441.9729.

#### EGAN'S BALLARD JAM HOUSE

Their motto is "Small place, big time!" and that's what you'll get at this theater, where Seattle's youngest up-and-coming players perform with and learn from seasoned professionals. 1707 NW Market St., 206.789.1621.





#### HIGHWAY 99 BLUES CLUB

Located in a century-old building on the waterfront, Highway 99 offers live music W-Sa and select Sundays. Music ranges from roots and honky-tonk to Americana and blues from local, regional and national bands. Seeking to capture the flavor of southern clubs, there's a 34-foot bar made from antique doors, reclaimed benches and a gallery of art from local artists. 1414 Alaskan Way, 206.382.2171.

#### SEAMONSTER LOUNGE

For a taste of Seattle's cutting-edge innovations, Wallingford's SeaMonster advertises acts from acid jazz to "lunatic jazz." 2202 N. 45th St., 206.922.1120.

#### ONSTAGE

##### 5TH AVENUE THEATRE

Wowing audiences since its vaudevillian opening in 1926, the theater was spared the wrecking ball in 1980 with a \$2.6-million renovation to its original, ornate, Oriental design. Today it presents banner musical revivals, plus premieres of shows bound for Broadway and touring Broadway shows. 1308 Fifth Ave., 206.625.1900.

#### ACT THEATRE

Since 1965, this downtown theater has been producing contemporary plays by established and promising playwrights with local actors. With five performance spaces, there is always something new and exciting happening. Check the website for current productions. 700 Union St., 206.292.7676.

#### PACIFIC NORTHWEST BALLET

The Pacific Northwest Ballet is one of the most highly regarded companies in the United States. The nearly 50 dancers present more than 100 performances each year at McCaw Hall in Seattle Center. In addition to traditional and new works, the company also presents "The

Nutcracker" each holiday season. The full schedule is available on the website. 301 Mercer St., 206.441.2424.

#### PARAMOUNT THEATRE

Put on the National Register of Historic Places in 1974, the Paramount Theatre hosts performances of every stripe. 911 Pine St., 206.682.1414.

#### SEATTLE REPERTORY THEATRE

Located on the campus of Seattle Center, the Seattle Repertory Theatre surprises, entertains, challenges and uplifts the community through productions of classics, recent Broadway hits and contemporary works. Seattle Rep was the first Seattle theater to win a Tony Award for Outstanding Regional Theatre. Seattle Center, 155 Mercer St., 206.443.2222.

#### TAPROOT THEATRE

This professional, nonprofit theater company is located in Seattle's Greenwood neighborhood. The Jewell Mainstage seats 220 and the Isaac Studio Theatre, a black-box theater, seats 120. 204 N. 85th St., 206.781.9707.

#### PUBS & BREWERIES

**BLUE STAR CAFE & PUB**  
Gulp down any of the 22 microbrews on tap. This pub is also a wonderful place for breakfast or brunch—don't miss the bacon waffle! On summer days, enjoy dining on the patio. 4512 Stone Way N., 206.548.0345.

#### FADO IRISH PUB

This authentic Irish pub in the heart of Pioneer Square serves excellent brews and traditional pub grub. Its weekly trivia night is one of the city's best. 801 First Ave., 206.264.2700.

#### KELLS IRISH RESTAURANT & PUB

This pub is reliably packed with Pike Place Market regulars enjoying shepherd's pie or corned beef with their beer. 1916 Post Alley, 206.728.1916.

#### MAGNOLIA VILLAGE PUB

This casual, family-friendly pub is the perfect rest stop after a walk in nearby Discovery Park. Play pool, watch TV, or order beers on tap. 3221 W. McGraw St., 206.285.9756.

#### REDHOOK BREWERY

This brewery put Seattle on the microbrew map with distinctly Northwestern beers. You can tour the production facility too. 14300 N.E. 145th St., Woodinville, 425.483.3232.



**THE EASTSIDE'S LIVE MUSIC VENUE.**

**Crossroads**  
BELLEVUE

**FREE LIVE PERFORMANCES EVERY WEEKEND**

[CROSSROADSBELLEVUE.COM](http://CROSSROADSBELLEVUE.COM)





## Map 2 | SEATTLE AND THE EAST SIDE



## WESTERN WASHINGTON | Map 3





WHERE IN SEATTLE

# THE FIX

*We're addicted to happy hour.*



The Cloud Room

■ It's always five o'clock somewhere, but when it comes to after-work drinks where do Seattleites recommend? We asked a few local luminaries to weigh in on where they go for a well-deserved adult beverage after clocking out.

For more great **desserts** in Seattle, visit [wheretraveler.com](http://wheretraveler.com)

#### Oliver's Twist

For a great local neighborhood happy hour spot be sure to hit up Oliver's Twist. Their rendition of the Prohibition-era Boulevardier is the best around! **Mark Klebeck** co-founder, **Top Pot Doughnuts**

#### 909 Coffee & Wine

I love to devour the bacon-wrapped dates, goat cheese crostini and duck fat

potatoes, topped off with at least two "Bartender's Special" cocktails in their warm and cozy environment.

**Manuela Horn,** performer, **Teatro ZinZanni**

#### The Cloud Room

I love stopping by the Cloud Room Bar in Chophouse Row for happy hour or during one of their curated events. It's a gorgeous, tucked-away

spot and they make a fabulous Manhattan! It's a perfect spot to enjoy a drink and some company away from noisy crowds.

**Laurie Kearney,** owner, **Ghost Gallery**

#### Hotel Albatross

My favorite happy hour in my neighborhood, Ballard, is Hotel Albatross for their deliciously creative tiki drinks and

amazing menu. If you're looking for a snack, definitely check out the puffy tacos, but if you want something heartier, I suggest the tonkatsu fried rice. If you crave a balanced cocktail that's on fire, served in a coconut, or with an umbrella... this is your spot!

**Joanna Hawley,** creative director and stylist, [jojotastic.com](http://jojotastic.com)

©RYAN CORY/THE CLOUD ROOM



## IGNITE YOUR INSPIRATION

Immerse yourself in the work of Dale Chihuly with a walk through the Galleries, Garden and the Glasshouse. Continue your experience with artistically-inspired dishes at Collections Café amid Dale Chihuly's colorful, personal collections.

LOCATED AT THE BASE OF THE SPACE NEEDLE, SEATTLE CENTER  
[CHIHULYGARDENANDGLASS.COM](http://CHIHULYGARDENANDGLASS.COM)

**CHIHULY**  
GARDEN AND GLASS

PRIVATE TOUR PACKAGES AVAILABLE. VISIT US ONLINE TO LEARN MORE.