

Live Bold. Live Authentic.
Live Philadelphia.



Philadelphia - where modern luxury meets historic elegance. From our exquisitely preserved 18th century brick row-houses, to the luxury amenities offered in the newest modern high-rises, discover what it's like to LIVE in Philadelphia.



JASON KRAVITZ



c. 267.324.4141 | o. 215.735.2225

www.RealtorJK.com | RealtorJK@Gmail.com

1631 Locust Street Suite 300, Philadelphia, PA 19103

Each office is Independently owned & operated

MAY 2018
THE COMPLETE GUIDE TO GO®

Philadelphia where

wheretraveler.com

Chinese Lantern Festival returns to Franklin Square May 1 - June 30 PROMOTION



LIGHT BRIGHT

Illuminating activities across the city

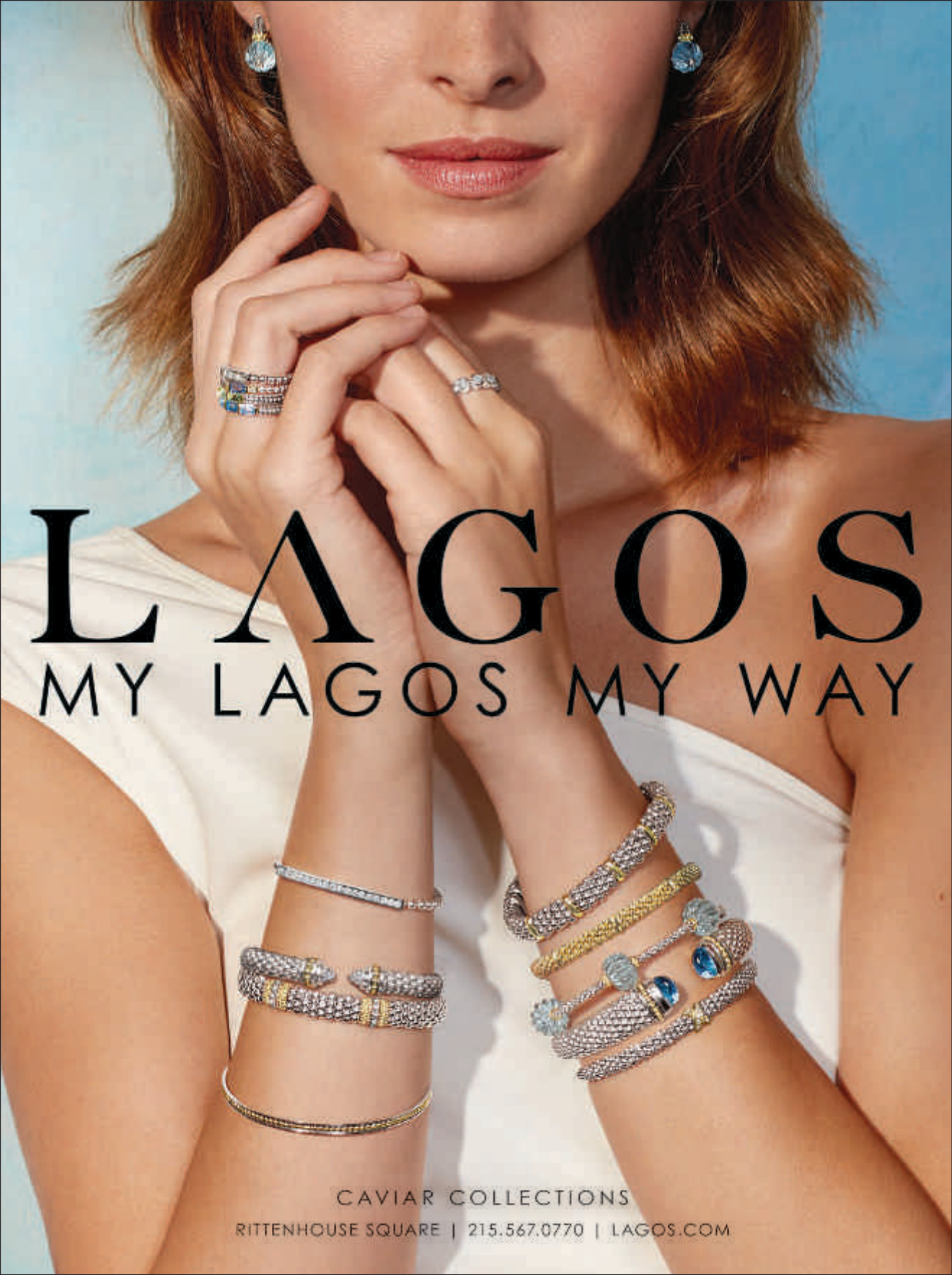
NEW CHEFS
TO WATCH



HOT SHOPPING
ZONES



PLUS: FAMILY
FUN GUIDE



LAGOS

MY LAGOS MY WAY

CAVIAR COLLECTIONS

RITTENHOUSE SQUARE | 215.567.0770 | LAGOS.COM

CONTENTS

SEE MORE OF PHILADELPHIA AT WHERETRAVELER.COM

the plan

02 Editor's Itinerary

The essential things to see and do in Philadelphia, plus a 90-minute visit to the country's oldest outdoor market.

04 Where Calendar

Hot Dates This Month
Top things to do in May.



40 Philadelphia Your Way

Foodie, luxury seeker, LGBTQ traveler or all three? We've got you covered with top picks.



ON THE COVER

All new lanterns and cultural performances fill Franklin Square for The Philadelphia Chinese Lantern Festival ©JEFF FUSCO/TIANYU

CONNECT WITH US



READ US ON MAGZTR

©J. FUSCO FOR VISIT PHILADELPHIA®; ©NEAL SANTOS; COURTESY REVOLUTION TACO; ©J. FUSCO FOR VISIT PHILADELPHIA®



10

Cadence



8

Midtown Village

where now

8 Shop 'Til You Drop

A robust community of indie boutiques makes Philly a shopper's paradise.

10 Food Phenoms

This foodie town has a fresh crop of top chefs. Get to know them here. **BY ADAM ERACE**

11 High Notes

From jazz to punk, Philly's musical roots run deep. Here's where to go for toe-tapping tunes paired with great food and drinks.

the guide

12 SHOPPING

Top spots to shop, from department stores to independent boutiques

18 GALLERIES & ANTIQUES

Paintings, photography, sculptures, antiques, plus exhibitions to see now

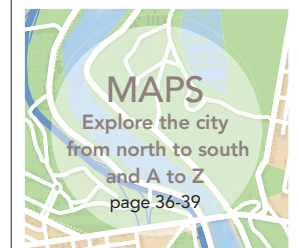
21 DINING

Tasty Philly restaurants, from fine dining to fast casual, in more than a dozen neighborhoods



31 ENTERTAINMENT

Fun bars, hip lounges, world-class theater and many more ways to enjoy the arts



NEWS TO TRAVEL BY

Essential Philadelphia



This month has Philadelphians getting out to enjoy all that the city has to offer, including top-notch stores. Shopping is a great way to see the city, while picking up a few items to update your wardrobe. Check out our short but sweet rundown (page 8) of the wonderful retail zones around town. Food is always top of mind for locals, and for good reason. After all, Philadelphia is home to some famous top chefs. Turn to page 10 to learn about the new culinary guard. If you have only limited time, we can help with a quick guide to one of Philly's most popular areas.

90 MINUTES IN: The Italian Market

With history, arts and culture, Philadelphia is a city full of must-visit sites. But one place you absolutely should not miss is The Italian Market, the oldest and largest outdoor hawker center in the country. Running along 9th Street from Wharton to Fitzwater streets in South Philadelphia, the market buzzes with smile-inducing sights, smells and sounds hard to find in other major U.S. cities today.



Established in the mid-to-late 1800s, The Italian Market began with a single boarding house for Italian immigrants and grew with merchants selling everything from fresh produce to meats and baked goods. In time, full-scale restaurants popped up around the area, too.

Though originally home to newcomers from Italy, the zone today draws denizens from around the world, enhancing the market with a

global vibe. Now, in addition to classic Italian favorites, find Korean barbecue, Vietnamese pho, Mexican tacos and much more.

So what should you do here? Eat of course! Some vendors offer samples, but plenty of restaurants offer sit-down feasts, too. For a quicker meal (and tons of local color) get in on the cheesesteak

action at famed spots Pat's and Geno's, a longtime source for good-natured cheesesteak debates in the city.

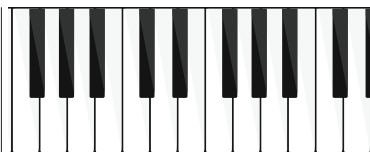
But you don't have to be a foodie to take full advantage of all that the market has to offer. Shutterbugs, both amateur and pro, find a wealth of Instagrammable shots here, with colorful characters and gorgeous foods making wonderful memories sure to last a lifetime. For details, see page 27.

W Get going! Explore the city at wheretotraveler.com.

where® in the world

Where is an international network of magazines first published in 1936 and distributed in over 4,000 leading hotels in more than 50 places around the world. Look for us when you visit any of the following cities, or plan ahead for your next trip by visiting us online at wheretotraveler.com.

UNITED STATES Alaska, Atlanta, Baltimore, Boston, Charleston, Charlotte, Chicago, Dallas, Indianapolis, Jacksonville/St. Augustine/Amelia Island, Las Vegas, Los Angeles, Maui, Miami, Minneapolis/St. Paul, New Orleans, New York, Oahu, Orange County (CA), Orlando, Philadelphia, Phoenix/Scottsdale, San Diego, San Francisco, Seattle, St. Louis, Tampa, Tucson, Washington, D.C. **ASIA** Hong Kong, Macau, Singapore **AUSTRALIA** Brisbane, Gold Coast, Melbourne, Sydney **CANADA** Calgary, Canadian Rockies, Edmonton, Halifax, Muskoka/Parry Sound, Ottawa, Toronto, Vancouver, Victoria, Whistler, Winnipeg **EUROPE** Berlin, Budapest, Istanbul, London, Madrid, Milan, Moscow, Paris, Rome, St. Petersburg



This is not your grandfather's piano bar. It's a rockin', rollin', sing-a-long, drink-a-long helluva good time. So come on down to Jolly's and eat, drink, and (dare we say it?) be jolly!

215.238.1333
jollysduelingpianobar.com

110 Chestnut Street
Philadelphia, PA 19106



(FROM TOP) ©ANNE KIM-DANNIBALE; ©R. KENNEDY FOR VISIT PHILADELPHIA™

YOUR TRAVELING COMPANION SINCE 1936®

where®
PHILADELPHIA

Member of the **M** Morris Media Network

PUBLISHER Rick Kestenbaum
EDITOR Anne Kim-Dannibale
ASSISTING EDITOR Jennifer McKee
EDITORIAL ASSISTANTS Alexander Oliveira, Scott Rouch

ADVERTISING & CIRCULATION
ASSOCIATE PUBLISHER Brenda Mendte
CIRCULATION AND COMMUNICATIONS MANAGER Zach Santo

EDITORIAL & DESIGN
ART DIRECTOR Dusty Martin
CONTRIBUTING WRITERS Adam Erace

MORRIS VISITOR PUBLICATIONS

MVP | EXECUTIVE
PRESIDENT Donna W. Kessler
CHIEF FINANCIAL OFFICER Dennis Kelly
VICE PRESIDENT, OPERATIONS Angela E. Allen
HEAD OF DIGITAL Richard H. Brashear II
REGIONAL VICE PRESIDENT, SALES Kristen Standish
DIRECTOR OF CIRCULATION Scott Ferguson

MVP | CREATIVE
CHIEF CREATIVE OFFICER Haines Wilkerson
EDITORIAL DIRECTOR Margaret Martin
DIRECTOR OF PHOTOGRAPHY Isaac Arjonilla
CREATIVE COORDINATOR Beverly Mandelblatt

MVP | NATIONAL SALES
VICE PRESIDENT, NATIONAL INTEGRATED SALES Rebekah Valberg
VICE PRESIDENT, NATIONAL MARKETING Adeline Tafuri Jurecka
MANAGER, NATIONAL INTEGRATED SALES David Gately

MVP | PUBLICATION SERVICES
PUBLICATION SERVICES DIRECTOR Karen Fralick
PUBLICATION SERVICES MANAGER Cher Wheeler
DIGITAL IMAGING Erik Lewis

MVP | MANUFACTURING & TECHNOLOGY
DIRECTOR OF MANUFACTURING Donald Horton

E-mails for all of the above except contributors:
firstname.lastname@morris.com

MVP

Morris Visitor Publications

MVP | PHILADELPHIA
1455 Pennsylvania Ave. NW, Suite 457,
Washington, DC 20004, 202.349.9858

MORRIS COMMUNICATIONS
CHAIRMAN William S. Morris III
PRESIDENT & CEO William S. Morris IV

wheretotraveler.com

Where® magazine is produced by Morris Visitor Publications (MVP), a division of Morris Communications Co., LLC, 725 Broad St., Augusta, GA 30901, morrismedianetwork.com. Where magazine and the where® logo are registered trademarks of Morris Visitor Publications.

Where makes every effort to ensure the accuracy of the information it publishes, but cannot be held responsible for any consequences arising from errors or omissions. All rights reserved. Reproduction in whole or in part strictly prohibited.



FISHTOWN HOPS

WELCOME TO PHILLY'S BEER GARDEN

Fishtown Hops is an experience complete with a delicious food menu, craft beers, cocktails, games, live entertainment and more.

Join us for happy hour, a bite to eat with a view or a fun night out catching up with friends.

Located on the river at SugarHouse Casino, where parking is always free.

POWERED BY SUGAR HOUSE CASINO

FISHTOWNHOPS.COM

FREE SELF-PARKING ON N. DELAWARE AVE. 1 MILE NORTH OF THE BEN FRANKLIN BRIDGE.

Persons under 21 are not permitted inside the casino.

GAMBLING PROBLEM? CALL 1-800-GAMBLER.



HOT DATES

ALL MONTH: Chinese Lantern Festival

Franklin Square turns into an illuminated wonderland at night thanks to 1,500 creations lit up with no less than 15,000 LED bulbs taking up residence. See animals in a different light in the new Endangered Species gallery, channel your inner child at the Fairy Tree, and dive deep in the Great White Shark Tunnel. Acrobats, plate-spinners and contortionists add to the fun, while the Dragon Beer Garden and artisan vendors offer more reasons to stay out late. \$18, \$15 seniors/military, \$12 youth, under 3 free. Su-Th 7-11 pm, F-Sa 6-11 pm. 6th and Race streets, historicphiladelphia.org



Sail Philadelphia



BlueCross Riverink Summerfest

5 Great Things Not to Be Missed

1 SOUTH STREET SPRING FESTIVAL > MAY 5

More than 12 city blocks highlight the nabe's bars, restaurants and shops, with dozens of rock bands providing the soundtrack. Free. Check website for times. South St., starting at Front St., 215.413.3713, southstreet.com/spring-fest

2 FIRST SUNDAY FAMILY DAY > MAY 6

Bring the kids for this fun-filled day of hands-on art-making, dance and music performances, and film screenings. Free. 10 am-5 pm. The Barnes Foundation, 2025 Benjamin Franklin Parkway, 215.278.7000, barnesfoundation.org

3 WIZARDS WORLD COMIC-CON > MAY 17-20

Sean Astin and more celebs hold court at this popular geek-fest. From \$35. Times vary. Pennsylvania Convention Center, 1101 Arch St., 215.418.4700, wizardworld.com

4 KINETIC SCULPTURE DERBY AND ARTS FESTIVAL > MAY 19

Human-powered contraptions headline this street party. Free. Noon-6 pm. Trenton Ave., from Norris to Hagert, kensingtonkineticarts.org

5 MEMORIAL DAY SALUTE > MAY 26

The Philly Pops honors service members with classic American tunes. Free (register online). 7 pm. Mann Center for the Performing Arts, 5201 Parkside Ave., 215.893.1919, phillypops.org

For a full calendar of events, go to wheretraveler.com/philadelphia/local-events

TOP SPOTS

The Delaware River Waterfront officially opens for the summer season with riverside events, including a carnival with rides and more for the whole family.

MAY 11 SPRUCE STREET HARBOR PARK

The popular seasonal hangout comes alive with a floating garden, hammocks, hanging glow sticks lighting up trees, boardwalk games and lawn chairs, where visitors wile away the hours with good food and drink. Free. 301 S. Christopher Columbus Blvd., 215.922.2386, delawareriverwaterfront.com

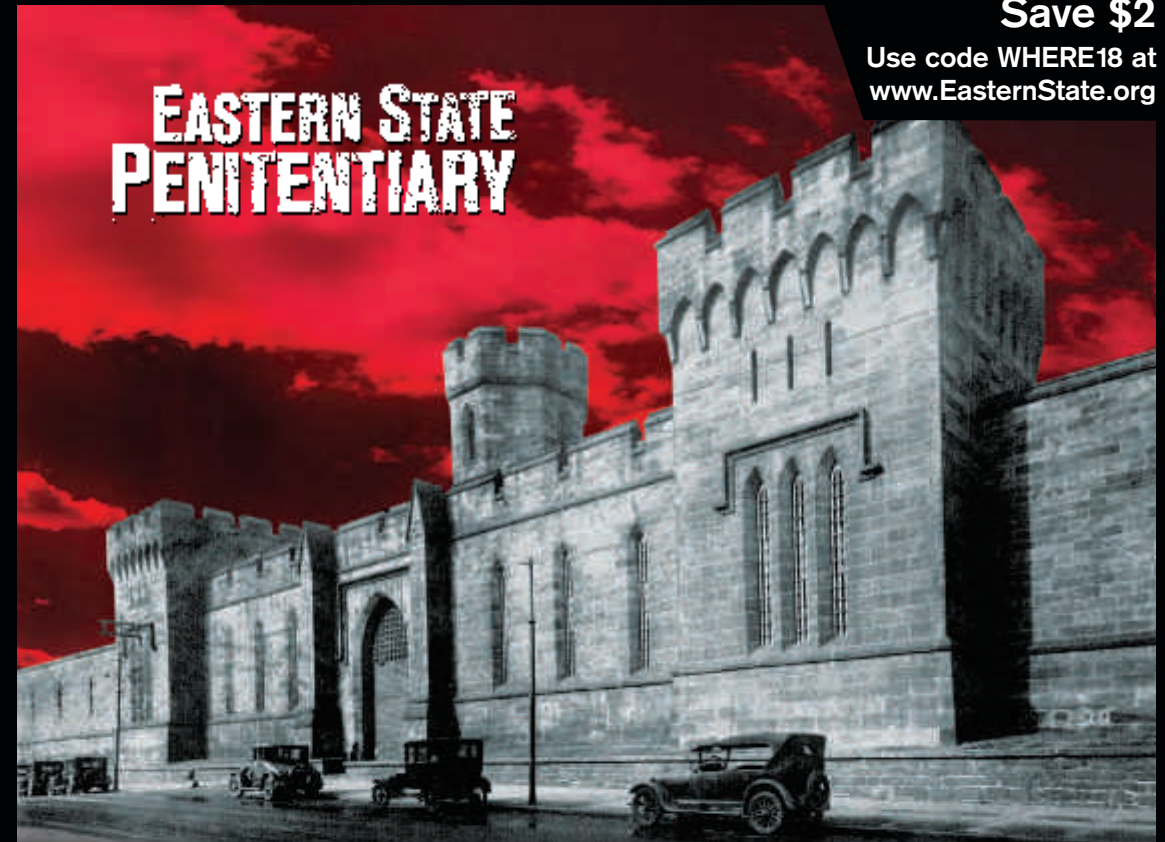
MAY 11 BLUECROSS RIVER-RINK SUMMERFEST

Nothing feels more like summer vacation than this section of the waterfront. Glide on an outdoor roller-skating rink, play a couple rounds of mini golf and visit the Midway, a carnival with games, a carousel and a 60-ft. ferris wheel. Hours/prices vary. F-Su, 101 S. Christopher Columbus Blvd., 215.925.7465, delawareriverwaterfront.com

MAY 24-28 SAIL PHILADELPHIA

A dozen tall ships sail in from Portugal, Spain, Nova Scotia and the U.S. Glimpse life on the high seas more than 100 years ago with a tour, set off on a day sail or stay on terra firma for food and drink. \$7; ship tours/sails more. Hours vary. Delaware River Waterfront (Walnut St. and Columbus Blvd.), 215.413.8655, sailphiladelphia.org

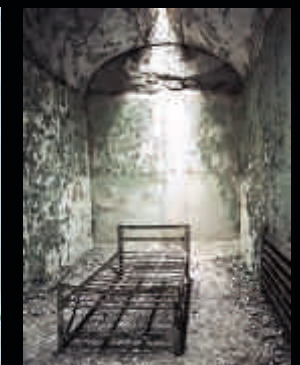
(FROM TOP) ©JEFF FUSCO/TIANYU; ©MATT STANLEY/SAIL PHILADELPHIA; ©J. FUSCO FOR VISIT PHILADELPHIA®



EASTERN STATE PENITENTIARY

Explore America's Most Historic Prison

A haunting world of crumbling cellblocks and empty guard towers



Tours include the cellblocks, Al Capone's Cell, artist installations, and an audio tour narrated by actor Steve Buscemi.

Open Every Day 10 am to 5 pm • (215) 236-3300 • www.EasternState.org
2027 Fairmount Avenue, Philadelphia, PA • Just five blocks from the Philadelphia Museum of Art



LIKE A LOCAL
"WHIZ WIT"



How to Eat Like a Local

PRESENTED BY PAT'S KING OF STEAKS

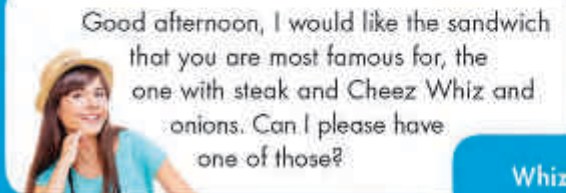
● No visit to Philadelphia would be complete without a visit to the birthplace of the cheese steak sandwich, Pat's King of Steaks®. Sure, there are lots of places in Philly to get a cheesesteak, but only Pat's gives you the authentic experience that locals have lined up for since 1930.

1237 E. PASSYUNK AVENUE (AT 9TH & WHARTON)
PATSKINGOFSTEAKS.COM • #ORIGINATOR

LOCATIONS: CHEESESTEAK, FRANKIE OLIVERI, STRAVAGIA PHOTOGRAPHY

How to Order Like a Local

DON'T SAY DO SAY



Good afternoon, I would like the sandwich that you are most famous for, the one with steak and Cheez Whiz and onions. Can I please have one of those?

Whiz Wit



Would it be at all possible to have that without onions?

Whiz Wit-Out



I'll take a cheesesteak, without the cheese, but with onions.

Plain Wit



On second thought, no onions.

Plain Wit-Out



Hmmm...I'd like a cheesesteak with...um, hmmm...which cheese do I want?

"Provolone Wit" or "Provolone Wit-Out" or "American Wit" or "American Wit-Out" or "Pizza Wit" or "Pizza Wit-Out"



Chef and third generation Pat's owner Frankie Oliveri, as seen on Food Network, Travel Channel, Spike and more

● Want mushrooms and/or peppers? Want to try our Roast Pork, Hot Dogs or Fish Cakes? Just ask any way you want! Pay with cash, grab your sandwich, then step to the other window for fries and drinks. Got it? Great! You're now an honorary local. See you at Pat's!

Philadelphia where now

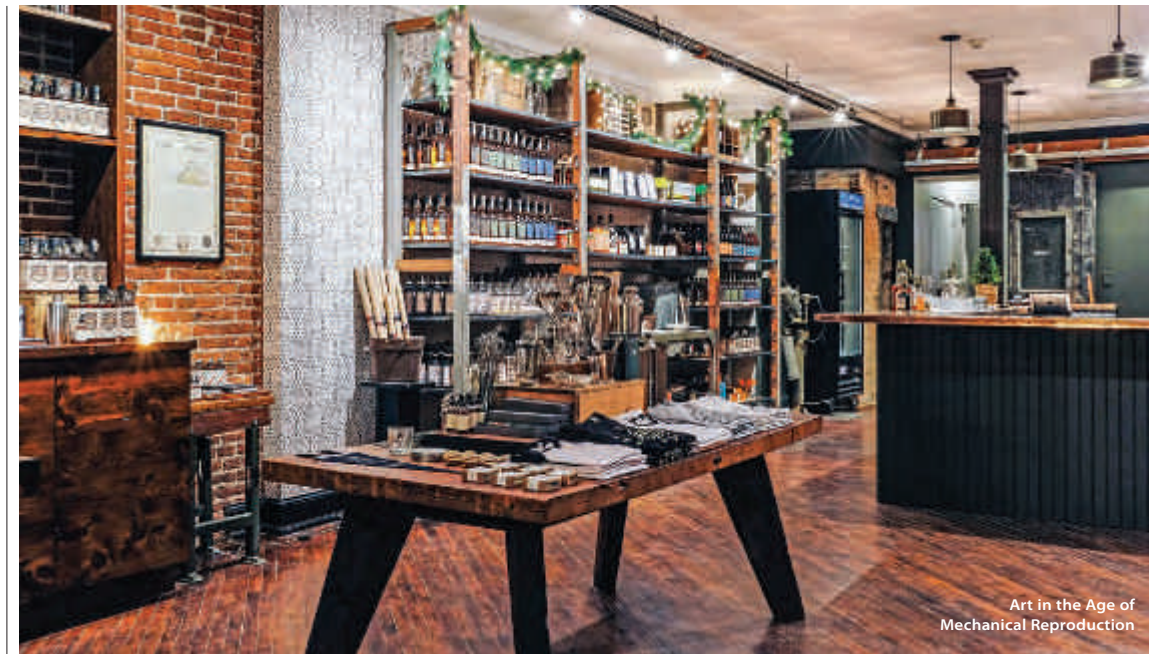
The savvy traveler's guide to the City of Brotherly Love



RETAIL THERAPY

Shop 'Til You Drop

A robust community of indie boutiques makes Philadelphia a shopper's paradise.



Art in the Age of Mechanical Reproduction

Around the Block

Philadelphia's shopping landscape is a varied and rich one. While shoppers find all the hot big-name retailers here, they also find a wealth of unique local stores carrying many items they may only find in Philly. From Midtown Village to Rittenhouse Square, here's a quick guide to the city's home-grown retail scene.

MIDTOWN VILLAGE

In the not-too-distant past, this neighborhood was nameless. But thanks to an energetic merchants association, the area around 13th Street between Chestnut and Locust streets has been reborn as a hot spot for dining and shopping. Gift shops run the gamut: Find one-of-a-kind jewelry at Bella Turka; handmade all-natural soaps, scrubs and soaks at Duros & Langel; stylish home accessories, children's gear and quirky gifts at Open House (right).

OLD CITY

Philadelphia's historic core boasts more than iconic venues and Colonial sights; it also teems with locally owned boutiques and off-beat art galleries. Find contemporary works in places like 3rd Street Gallery and LG Tripp Gallery, or stop into Muse Gallery, an artists' cooperative for only-in-Philly treat-

ures. Independent shops like Lost + Found, Smak Parlour (opposite) and The Geisha House capture the latest trends, while places like Art in the Age of Mechanical Reproduction (above) offer hip accessories for the home.

QUEEN VILLAGE

This area draws its funky vibe from nearby swanky Society Hill and the tightly woven ethnic communities of South Philadelphia. The result is a boho spirit that draws an eclectic mix of retail. Fabric Row on South 4th St. between South and Christian streets has long been a hub for textiles, and still is. But shoppers find plenty of goods in vintage stores, high-end retailers and antiques shops. Look for local favorites like Moon + Arrow for flowy Coachella-appropriate outfits, Bus Stop Shoes for covetable kicks and Cactus Collective for retro looks,

plus a rotating gallery in the back highlighting local artists.

RITTENHOUSE SQUARE

This posh part of town has tons of designer outposts. Walnut Street is home to loads of luxe and fashion-forward brands, like Vince and Stuart Weitzman. But tucked in between find boutiques like Italian

designer footwear hub Head Start Shoes. Stadler-Khan is a favorite for unique gifts, vintage jewelry and clothing. Local fashion force Joan Shepp's eponymous multi-level concept store has been the premier fashion retailer here for more than 40 years with clothing and accessories from Phillip Lim, Vivienne Westwood and Moschino.



Open House

(FROM TOP) COURTESY QUAKER CITY MERCANTILE; ©C. GABELLO FOR VISIT PHILADELPHIA™; (OPPOSITE) ©B. KRIST FOR VISIT PHILADELPHIA™



CUISINE SCENE
Food Phenoms Taking the City by Storm

At the serene nine-seat sushi counter tucked in the back of **Royal Izakaya** in Queen Village, Jesse Ito (above) manipulates fish and rice with the quiet confidence of someone who's been practicing for 20 years. Which, in a way, he has, despite being just shy of his 30th birthday. Ito grew up in the business in his parents' restaurant in Haddonfield, New Jersey, learning the ropes from his father, who's now his partner at Royal Izakaya, along with Stephen Simons and Dave Frank. He's the unequivocal star, orchestrating the city's best omakase with 10 (\$70) or 18 (\$130) courses passing from Jesse's nimble hands to 18 lucky diners. He flies in lesser-known fish like cherry blossom trout, firefly squid and sailfish poacher, plus familiar species whittled into precise crosshatched polygons. Read on for more top chefs to watch. By Adam Erace

SAMANTHA KINCAID, JON NODLER AND MICHAEL FRY
Married native Wisconsinites Kincaid and Nodler have been a force in the Philadelphia restaurant scene since they moved here in 2012 to work at Fork in Old City, where they met fellow cook Fry. Earlier this year, the trio (right) struck out on their own with **Cadence**, a restaurant on the line of Northern Liberties and East Kensington. "After several years of constant momentum, we realized we were eager to take a chance and attempt to define our own identity," says Kincaid. At Cadence, that means borderless dishes that synthesize Nodler's and Fry's savory talents (stuffed chicken wings with tamarind and mango, seared scallop with roast pork and spicy provola) and Kincaid's not-too-sweet desserts featuring ingredients like tahini, mandarinquats and beet jam. The place is BYOB, but the menu thoughtfully lists recommended pairings diners can pick up at Bottle Bar East a couple blocks away. Not imbibing? The Cadence crew has put together a roster of fun non-alcoholic options, including hopped kombucha, vinegar soda and sparkling tea.



Kincaid, Nodler (center) and Fry

CHAD GELSO
For the last two years, Gelso was working in Washington, D.C. in his first chef de cuisine role at Fiola, where he helped the restaurant earn a Michelin star, but "Philly has always been home for me," says the 28-year-old native of Northeastern, Pennsylvania. Now, the Amada, 10 Arts and Buddakan alum heads the kitchen at **Aldine** in Rittenhouse Square, filling big shoes left by George Sabatino. But Gelso is doing well, steering the spot toward a sophisticated Italian aesthetic in potato gnocchi with Burgundy snails and emerald nettle cream; savory ricotta-rye cannoli jeweled with caviar; mille feuille crepe with blood orange marmalade and mascarpone gelato. "The restaurant culture and industry here is amazing and really exploding right now. I'm thrilled to be a part of it."

NICK KENNEDY

Kennedy had been doing competent work at Root, the buzzing Fishtown brasserie he owns with Stephen Starr veteran Greg Root. But the chef's profile is really rising thanks to his sophomore effort with Root, Suraya, a Middle Eastern café and market. "Jumping into a new cuisine is very challenging and exciting at the same time," he says. "It's a lot of research, practice and trial and error, but in the end, when you put yourself in an unfamiliar setting, [that's] when you learn and grow the most." It doesn't hurt that Suraya is a gorgeous confection of arabesque tiles, Lebanese pottery and glowing lanterns. You'll find Kennedy in the open kitchen, sliding fresh pillows of pita in and out of the oven and decorating hummus with shaved spiced lamb and fresh mint, while preparing for the next phase: dinner service and an outdoor garden.



(CLOCKWISE FROM TOP LEFT) COURTESY ROYAL IZAKAYA; COURTESY CADENCE; COURTESY SURAYA

MUSIC SCENE

High Notes

From R&B to jazz, blues to show tunes, folk to freak outs, hip-hop to punk rock, Philly is famous for its long reach when it comes to live music venues with food and booze. Here's a selection of top high notes, hot plates and cold drinks.



Chris' Jazz Cafe



(FROM TOP) © G. MILLER/VISIT PHILADELPHIA; COURTESY WORLD CAFE LIVE

World Cafe Live

It's no surprise that the University City home of WXPB radio's namesake national music program is always abuzz with activity. The building also houses a store, a bistro-style restaurant serving tasty casual fare, and a multi-level concert venue, which actually isn't related to the longtime radio show at all. Two stages regularly host locally and nationally recognized musicians, plus frequent open mic nights and jam sessions. Typical acts taking the spotlight here may include a top Malian guitarist, a reggae crossover group, a country crooner and a rocker—sometimes all in one night! 3025 Walnut St., 215.222.1400, www.philly.worldcafelive.com

CHRIS' JAZZ CAFE
As the only full-time live jazz room in downtown Philadelphia, Chris' gets major props. Not only does it host student-run open jam nights and large scale showcases of their own, the cafe also books top-notch national jazz acts nightly. If that isn't enough, the globally inspired food is exquisite and the bartenders make stellar traditional Moscow Mules. 1421 Sansom St., 215.568.3131, chrisjazzcafe.com

HOWL AT THE MOON
This isn't your father's piano bar a la "Mad Men," where a guy in a tux plays Sinatra standards. Howl at the Moon's pianists roar through rock classics and today's hits—think Billy Joel and Beyoncé—while bar-goers taking lead vocals. 258 S. 15th St., 215.546.4695, howlatthemoon.com/Philadelphia

JOHNNY BRENDA'S
This bi-level venue hosts a wealth of notable local, national and international acts, not to mention a mean Sunday Gospel music brunch. Plus, the burgers and local

beers are some of the best in town. 1201 N. Frankford Ave., 215.739.9684, johnnybrendas.com

TIME
Catch some of the best jazz and funk artists, like Philly's own Pete Gaudioso, while sipping one of 166 varieties of whiskey from the bar at this Midtown Village hangout. Be sure to check Time's full schedule of events, including open mic nights, on their website. 1315 Sansom St., 215.985.4800, time-restaurant.net

THE TWISTED TAIL
This Society Hill restaurant makes us nostalgic for a time when corner blues bars were a dime a dozen in this town. The juke joint feel paired with an adventurous Cajun-inspired menu and great whiskey selection makes this spot a must for foodies who love good music. Bring your harmonica to an open blues jam party, or groove along to electric and acoustic blues tunes from Philly cats and national acts. 509 S. 2nd St., 215.558.2471, thetwistedtail.com

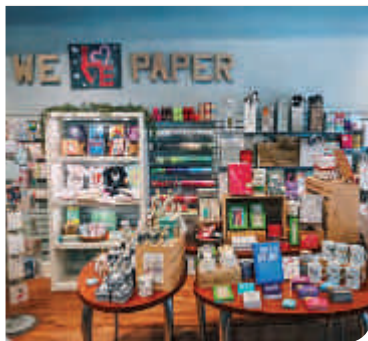
the where guide

Shopping | May



Head House Books

This Queen Village shop houses one of Philadelphia's most inviting spaces for browsing and was named Best Bookstore by Philadelphia Magazine. Enjoy a free cup of coffee and settle in for a few hours—lingering is encouraged. www.headhousebooks.com. 619 S. Second St., 215.923.9525. **Map 1, K7**



Paper on Pine

Located just a few blocks from City Hall in the heart of Center City, this bright and airy stationery shop stocks everything a writer needs, from lovely paper products by brands like Kate Spade to eco-friendly lines and fine writing instruments. www.paperonpine.com. 115 S. 13th St., 215.625.0100. **Map 1, I5**



Urban Princess Boutique

This Fabric Row shop is often recognized as a top spot for one-of-a-kind, affordable clothing and gifts. Inside, find locally made products, like organic soaps, jewelry, handbags and clothing. New inventory arrives almost daily, so it's worth it to check back often. www.urbanprincessboutique.com. 620 S. 4th St., 267.909.8317. **Map 1, K7**

Apparel - Men

COMMONWEALTH PROPER—Expert style consultants work with individuals to create not only custom suits, but also shirts and even casual pieces designed to fit like a glove. By appt. only M-F 10 am-6 pm, Sa-Su 10 am-4 pm. www.commonwealthproper.com. 1839 Chestnut St., 267.319.1741. **Map 1, G5**

DAMARI SAVILE—Eagles safety Malcolm Jenkins and entrepreneur Jay Amin's menswear shop appeals to sharp dressers looking for a bit more detail in their outfits. Their 3,000-square-foot space offers ready-to-wear looks, but also a made-to-measure shop for custom pieces. A whiskey cellar, conference room and kitchen let gents host sartorially inclined events, too. M, Th, Su by appointment. Tu-W & F 10 am-7 pm, Sa 11 am-6 pm. www.damarisavile.com. 709 Walnut St., 267.218.5760. **Map 1, J5**

DISTANTE—Since 1983, this boutique has been offering the latest in business attire and upscale looks, plus custom outfits made in Naples, Italy. By appt. only. Call to reserve. www.distanteclothing.com. 1510 Sansom St., 215.545.2850. **Map 1, H5**

HENRY A. DAVIDSEN—This tailor and custom clothier located one block from Rittenhouse Square also offers image consulting and ready-to-wear selections, including cufflinks, pocket squares and rounds, ties and more. By appt. only. www.henrydavidson.com. 1701 Spruce St., 215.310.0219. **Map 1, G6**

MY.SUIT—This New York City made-to-measure has earned raves since setting up in Rittenhouse Square. The shop offers expert measurements, hundreds of fabrics, a two-week turnaround on custom suits and reasonable prices. M-Sa 10 am-7 pm, Su noon-6 pm. www.mysuit.com. 1518 Walnut St., 215.545.3300. **Map 1, H5**

NUTZ & BOLTZ—North Wales native Anthony Noce's irreverent Washington Square West shop not only carries underwear and swimsuits, but also clothing by lines like Andrew Christian, Marco Marco and Nasty Pig. M-Sa 11 am-9 pm, Su noon-5 pm. www.nutzandboltzfashion.com. 1220 Spruce St., 267.639.5958. **Map 1, I6**

P'S & Q'S—Scope out the hand-picked, premium items at this family-owned and operated menswear shop which carries a large inventory of casual and work-ready looks by in-demand

brands including Patagonia, Norse Projects, Kikkerland and Herschel Supply Co. M-Sa noon-7 pm, Su noon-6 pm. psandqs.com. 820 South St., 215.592.0888. **Map 1, I7**

Apparel - Men & Women

BARBOUR—Now more than 100 years old, Barbour is a fourth generation, family-owned company that has developed a clothing line that embodies the country life. Shop the biker-inspired Barbour International or classic Barbour Countryside collections for men and women. M-Th 10 am-7 pm, F-Sa 10 am-8 pm, Su 11 am-6 pm. www.barbour.com. 1517 Walnut St., 215.255.8420. **Map 1, H5**

BOYDS PHILADELPHIA—One of the country's largest men's stores and the city's largest designer women's store, this shop showcases the likes of Armani, Gucci, Zegna, Manolo Blahnik and Emilio Pucci. Free custom alterations and free valet parking. M-Sa 9:30 am-6 pm, W 9:30 am-8 pm. www.boydspshila.com. 1818 Chestnut St., 215.564.9000. **Map 1, G5**

CACTUS COLLECTIVE—Located along Fashion Row in Queen Village, this eclectic communal store gives shoppers a taste of Philly's indie style with

a mix of vintage and locally made boho clothing, jewelry and gifts. Treasure hunters also score original art in the rotating gallery at the back of the shop. W-M noon-7 pm. 739 S. Fourth St., 267.908.4178. **Map 1, K7**

CENTURY 21—Local fashionistas have flipped for Manhattan's off-price designer department store—Philadelphia's outpost is the first and only location outside of New York and New Jersey. Snag on-trend clothing, shoes and accessories for men, women and children, and you won't even make a dent in your wallet. Plus, cosmetics, electronics and housewares. Open M-F 9 am-8 pm, Sa 10 am-8 pm, Su 11 am-7 pm. www.c21stores.com. 821 Market St., 215.952.2121. **Map 1, J5**

CHARLIE'S JEANS—Owner Sebastian McCall's shop focuses on sought-after lines of premium jeans, and was voted Philadelphia Magazine's "Best of Philly 2011" for best denim. M-Sa 11 am-8 pm, Su 11 am-6 pm. www.charliesjeans.net. 233 Market St., 215.923.9681. **Map 1, K5**

CRASH BANG BOOM—This indie shop just off of South Street specializes in punk rock clothing and accessories for guys and gals alike. Find leather jackets, plaid pants and rock music T-shirts from brands including Lip Service, Tripp NYC and Switchblade, plus studded jewelry, edgy shoes and rock memorabilia. M-Tu noon-7 pm, W-Th till 8 pm, F-Sa till 9 pm, Su till 6 pm. www.crashbangboomonline.com. 528 S. Fourth St., 215.928.1123. **Map 1, K7**

HATS IN THE BELFRY—This local chain offers a large selection of men's and women's dress and casual toppers from brands including Korber, Stetson, Giovanni, plus styles from the hat company's own line. M-Sa 10 am-7 pm, W 10 am-8 pm, Su 11 am-6 pm. www.hatsinthebelfry.com. 1824 Chestnut St., 215.922.0303. **Map 1, G5**

LOST + FOUND—Affordable and trendy clothing, shoes, jewelry and handbags abound at this Old City storefront catering to both men and women. M-Sa 11:30 am-7 pm, Su noon-6 pm. 133 N. Third St., 215.928.1311. **Map 1, K4**

MACY'S CENTER CITY—Housed in the historic Wanamaker Building, this sprawling department store is worth a stop just to view the architecture. Of course, the fine fashions, accessories and decor typical of Macy's encourage visitors to shop until they drop. Stop by the Visitor Center (on the main floor, Market Street side) for the reserved-for-visitors Macy's Savings Pass to receive discounts on purchases. Open M-W 9 am-8 pm, Th-F 9 am-9 pm, Sa 10 am-9 pm, Su 11 am-7 pm. www.macys.com. 1300 Market St., 215.241.9000. **Map 1, H5**

SUGARCUBE—Locally owned, beautifully spacious and always inviting, Sugarcube is known for inspired fashion for men and women by independent designers and vintage styles. You might find such labels as A.P.C., Dunderdon, Gestuz, Frock! by Tracy Reese, Steven Alan, Pendleton and Bing Bang Jewelry. M-Sa noon-7 pm, Su noon-5 pm. www.sugarcube.us. 124 N. Third St., 215.238.0825. **Map 1, K4**

VINCE—This chic luxury apparel store is committed to producing everyday basics with enduring style and quality for both men and women. Shop the iconic essentials collection or the vast selection of ready-to-wear clothing and accessories. Open M-W 10 am-6 pm, Th-Sa 10 am-7 pm, Su

noon-5 pm. www.vince.com. 1701 Walnut St., 215.220.4965. **Map 1, G5**

Apparel - Women

323 ARCH STREET FASHION COLLECTIVE—This "work/shop" concept is run by designers who create items in house. Shoppers browse a collection of locally made women's clothing, accessories and jewelry, all within view of the studio. Tu-Sa noon-5 pm. www.323arch.com. 323 Arch St., 215.546.5975. **Map 2, D2**

ELLELAURI—Located in the heart of the fashionable Rittenhouse Square neighborhood, this chic women's clothing brand is known for offering modern looks in elegant silhouettes and a sophisticated color palette at affordable prices. M-Sa 10 am-7 pm, Su noon-5 pm. www.ellelauri.com. 114 S. 19th St., 267.457.5939. **Map 1, G5**

THE GEISHA HOUSE—Enter this chic Old City boutique to shop all the brands you didn't know you loved yet. Shoppers will find among the racks a mix of Australian brands, including Faithfull the Brand, Knot Sisters, and The Fifth Label. No matter if you're looking for edgy, bohemian, or feminine, friendly shop owner Cortney Cohen will have you looking great in her affordable merchandise. Open Su-M noon-5 pm, Tu-F 11 am-7 pm, Sa 11:30 am-7 pm. www.hellogeisha.com. 149 N. Third St., 267.886.8110. **Map 1, K4**

INTERMIX—Find sophisticated women's apparel from top high-end designers, including Fendi, Alexander McQueen and Jimmy Choo, at this Philadelphia outpost of this chic outfitter. Open M-Sa 10 am-7 pm, Su noon-5 pm. www.intermixonline.com. 1718 Walnut St., 215.545.6034. **Map 1, G5**

JOAN SHEPP—With more than 40 years in the biz, Shepp purveys women's designer apparel and accessories from top (but harder-to-find) European and American brands, including Dries van Noten, Rick Owens and Yohji Yamamoto. M-Tu and Th-Sa 10 am-6 pm, W till 8 pm, Su noon-5 pm. www.joanshepp.com. 1811 Chestnut St., 215.735.2666. **Map 1, H5**

LOU LOU BOUTIQUE—This small chain known for offering a selection of stylish women's accessories in a boutique setting is new to the Midtown Village neighborhood. In addition to three signature lines, shoppers can find designer-inspired jewelry, handbags, scarves, hats and sunglasses, plus a wide range of gift items. Since prices are affordable, a few items snagged here won't break the bank. M-Th 11 am-8 pm, F-Sa 10 am-9 pm, Su 11 am-6 pm. www.loulouboutiques.com. 143 S. 13th St., 267.538.1267.

NEVER TOO SPOILED—This eclectic boutique offers a unique shopping experience. Whether you are local or visiting, stop in to enjoy a whimsical collection of affordable clothing, accessories, home goods, and gifts. Open M-Sa 10 am-7 pm, Su 11 am-6 pm. www.nevertoospoiled.com. 57 N. 3rd St., 215.928.0167. **Map 1, K4**

NICOLE MILLER—Visit the renowned designer's boutique that showcases dresses, sportswear, bridal wear and accessories for women. Open M-W 10 am-6 pm, Th-Sa 10 am-7 pm, Su noon-5 pm. www.nicolemiller.com. The Shops at The Bellevue, Broad and Walnut streets, 215.546.5007. **Map 1, H5**

PLATINUM—Since 1999, this one-stop shop has been offering high-quality name brand clothing from labels like 7 For All Mankind, Diesel, Lacoste, Scotch & Soda, Hugo Boss and more. Su-M 11:30 am-8 pm, Tu-Th till 9 pm, F-Sa till 10 pm. www.shopatplatinum.com. 526 South St., 215.599.7528. **Map 1, J7**

SHOP SIXTY FIVE—Former New York City stylist Linda LaRosa hand-picks pieces from designers like Elizabeth & James, Rag & Bone and RTA, creating an edgy assortment of luxury knitwear, designer denim, occasion dresses and distinctive jewelry with a downtown vibe. M-Sa 11 am-7 pm, Su till 5 pm. www.shopsixtyfive.com. 128 S. 17th St., 267.239.5488. **Map 1, G5**

SOPHY CURSON—This salon-like spot carries a well-curated collection of gowns, day-into-evening looks, jewelry and accessories by Blumarine, Edward Achour and Tom and Linda Platt. M-F 9:30 am-5:30 pm, Sa 9:30 am-5 pm. www.sophycurson.com. 19th and Sansom streets, 215.567.4662. **Map 1, G5**

SOUTH MOON UNDER—Inside this spacious Center City shop, find hip, casual looks by Citizens of Humanity, FATE, Jules Smith and Trixie & Milo. M-Sa 10 am-7 pm, Su noon-5 pm. www.southmoonunder.com. 1731 Chestnut St., 215.563.2298. **Map 1, G5**

STEEL PONY—Longtime fashion insiders Joanne Litz and Dennis Wolk offer eco-friendly boho fashions and accessories that you can see being hand-dyed and sewn right in the store. Many items are one-of-a-kind and all are made in Philly with sustainable, locally sourced materials. Visit www.steelpony.com for store hours. 758 S. Fourth St., 215.467.6065. **Map 1, K7**

VAGABOND BOUTIQUE—Located in Old City, this boutique and yarn shop highlights hand-knit sweaters, jumpsuits and crop tops with a bohemian vibe, plus a chic assortment of accessories. M-Sa 11 am-7 pm, Su till 5 pm. www.vagabondboutique.com. 37 N. Third St., 267.671.0737. **Map 1, K4**

Bath & Beauty

DUROSS & LANGEL—Proprietors Steve Duross and James Langel combine old family recipes and modern science to create a signature line of natural soaps, salts, lotions and potions inside their colorful, contemporary apothecary. Ask about classes and workshops. Store: Tu-11 am-7 pm, W-Th till 8 pm, F-Sa 10 am-7 pm, Su noon-5 pm. Check for salon hours. www.durossandlangel.com. 117 S. 13th St., 215.834.7226. **Map 1, I5**

LUSH FRESH HANDMADE COSMETICS & SPA—The much-loved international cosmetics chain is known for its amazing smelling balms and butters made with natural ingredients and even boasting expiration dates. This location also boasts a signature spa where visitors can indulge in a total-sensory experience with mood-altering therapies. Open M-Sa 10 am-8 pm, Su 11 am-7 pm. www.lushusa.com. 1525 Walnut St., 215.546.5874. **Map H5**

Books & Music

ATOMIC CITY COMICS—This funky shop carries a wide selection of comics, graphic novels, back issues, manga and T-shirts, plus movies, toys and games. Look for frequent in-store events, too, including book signings. Su-Tu noon-9 pm,



THE GUIDE

W-Sa, noon-11pm. 638 South St., 215.625.9613. **Map 1, J7**

JOSEPH FOX BOOKS—This charming spot in Center City offers an array of selections from architecture and non-fiction to literature and poetry. M-Sa 9:30 am-6 pm, W till 7 pm. www.foxbookshop.com. 1724 Sansom St., 215.563.4184. **Map 1, G5**

VINTAGE INSTRUMENTS—Since 1974, Vintage Instruments has focused on fine acoustic instruments, featuring a wide selection of C.F. Martin & Co. guitars for everyone from weekend pickers to seasoned professionals. Plenty of treasures abound in this 19th century architectural treasure, from ukuleles to banjos and mandolins. Accessories include cases, strings, straps and much more. Open M-F 10 am-5 pm. www.pickamartin.com. 507 S. Broad St., 215.545.1000. **Map 1, H6**

Children

BORN YESTERDAY—This boutique on Rittenhouse Square carries clothing and toys for infants and children from a wide range of European and domestic designers. M-Sa 10 am-6 pm, Su 11 am-5 pm. www.bornyesterdaykids.com. 1901 Walnut St., 215.568.6556. **Map 1, G5**

MOMO'S TREE HOUSE—Wrangling kids into this Old City boutique won't be a hassle—Momo's not only provides toys from hard-to-find specialty makers, but encourages tots to test them out on the spot. M-Th 11 am-6 pm, F 11 am-7 pm, Sa 10 am-7 pm, Su noon-5 pm. www.momostreehouse.com. 205 Arch St., 267.457.2803. **Map 1, K4**

Crafts

BEADWORKS—A large selection of beads, gemstones, tools and notions helps DIYers create their own jewelry with the help of knowledgeable staff. Su-W and F, noon-6 pm, Th and Sa 11 am-7 pm. www.beadworksphiladelphia.com. 619 E. Passyunk Ave., 215.413.2323. **Map 1, K7**

LOOP—This colorful store offers natural fiber, hand-painted and luxury yarns for knitting and crocheting. The shop also carries a full range of patterns, needles and notions and offers classes for all skill levels. www.loopyarn.com. 1914 South St., 215.893.9939. **Map 1, G7**

RITTENHOUSE NEEDLEPOINT—With 1,100 square feet of space, this shop carries all manner of tools and notions for needlepoint, including hand-painted canvases, top-quality fibers, accessories, books and even finished items. Tu-Sa 10:30 am-5:30 pm. www.rittenhouseneedlepoint.com. 1737 Chestnut St., 2nd Floor, 877.764.6880. **Map 1, G5**

Gifts & Decor

ART IN THE AGE OF MECHANICAL REPRODUCTION—The carefully curated flagship of this artist collective, gallery and boutique is a treasure trove of hip goods ranging from men's and women's apparel to art prints and a branded collection of historically inspired spirits. Open M-Sa 11 am-7 pm, Su noon-6 pm. www.artintheage.com. 116 N. Third St., 215.922.2600. **Map 1, K4**

THE ART SHOP AT MOORE COLLEGE OF ART & DESIGN—Within this formidable arts-education institution is an excellent shop dealing in jewelry, scarves and accessories, as well as prints and greeting cards. The art and design pieces are created by Moore's emerging and established alumni

Contessa's French Linens



Now selling machine washable linens made, designed and sewn in the South of France

- Authentic French tablecloth business
- One-of-a-kind, stain resistant linens
- Quimper Products
- Authentic French Jewelry
- Polish Pottery



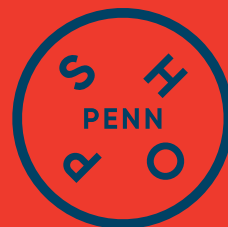
Reading Terminal Market
12 & Arch Streets, 3rd Ave., Row B
610.306.4507 • contessafrenchlinens.com

Calling all Readers Leaders + Eaters

With more than 30 shops, 40 restaurants, and 15 sports and culture venues, a day at Penn could take you anywhere.

Shop smarter.
Shop Penn.

#SHOPPENN
@SHOPSATPENN



SHOPSATPENN.COM

SHOPPING



PHILADELPHIA ISN'T JUST A DESTINATION.

IT'S A STARTING POINT.



With over 450 miles of track, SEPTA makes it easy to go from the hustle of the city to the charm of the suburbs. Expand your horizons with a shopping trip, history tour, nature hike, dinner date, or movie matinee. Wherever you stop, start with SEPTA.

LEARN MORE AT ISEPTAPHILLY.COM

as well as current students. M-Sa 10 am-6 pm. www.moore.myshopify.com. 1916 Race St., 215.965.8586. **Map 1, G4**

ART STAR—Admire handmade clothes, jewelry and accessories, plus dolls, ceramics and prints at this gallery-style boutique in Northern Liberties. Tu-Sa 11 am-7 pm, Su noon-6 pm. www.artstarphilly.com. 623 N. Second St., 215.238.1557. **Map 1, K2**

CONTESSA'S FRENCH LINENS—Find lovely imported tablecloths and tea towels from Provence, Brittany and other French regions, plus one-of-a-kind aprons, jewelry and rosemary baskets at this shop in the historic Reading Terminal Market. M-Sa 9 am-5:30 pm, Su 9 am-5 pm. www.contessafrenchlinens.com. 51 N. 12th St., 610.306.4507. **Map 1, I4**

THE MUSEUM STORE AT PAFA—The academy's gift shop stocks items inspired by exhibitions, plus accessories, jewelry, stationery and handcrafted decorative objects. Tu-Sa 9:30 am-5:30 pm, Su 11 am-5:30 pm. www.pafa.org/store. 128 N. Broad St., 215.972.2075. **Map 1, H4**

THE MUSEUM STORE AT THE PHILADELPHIA MUSEUM OF ART—At the museum's gift shop, find items inspired by past and current exhibitions, including posters, prints, jewelry, music and DVDs, toys, housewares, clothing and accessories. Call for hours. www.philamuseum.org. 2600 Benjamin Franklin Parkway, 215.684.7960. **Map 1, E2**

OCCASIONETTE—Established in 2013 by designer Sara Villari, this well-curated shop on South Philly's East Passyunk Avenue, has become a fixture for one of the city's largest selections of independently made cards, candles, tea towels, jewelry, barware, notebooks, journals, photo frames and more. M-F 11 am-8 pm, Sa 10 am-9 pm, Su 10 am-6 pm. www.occasionette.com. 1825 E. Passyunk Ave., 215.465.1704.

PENNSYLVANIA GENERAL STORE—Inside Reading Terminal Market, this vendor specializes in Philadelphia and Pennsylvania Dutch gift baskets, foods, souvenirs and more. M-Sa 8 am-6 pm, Su 9 am-5 pm. www.pageneralstore.com. Reading Terminal Market, 12th and Arch streets, 215.508.1881. **Map 1, I4**

RIKUMO—This local retailer stocks household goods from decor to kitchen essentials, beauty and stationery. Products found here are sourced directly from artisans and craftsmen in Japan, who practice ancient techniques. By connecting these traditional creators with a modern international public, store founders Kaz and Yuka Morihata aim to sustain the character and artistry of Japanese craftsmanship. M-Sa 11-7 pm, Su 11 am-5 pm. www.rikumo.com. 1216 Walnut St., 215.609.4972. **Map 1, I5**

STADLER-KAHN—Don't blink, or you might pass by this subterranean jewel-box, an "elevated five and dime." Proprietor Alexander Stadler stocks the space with his own designs, plus smart antique furnishings and fittings, designer vintage clothing, jewelry, toys, stationery and even fine art. M by appointment, Tu-Su 11 am-6 pm. www.stadler-kahn.com. 1724 Sansom St., 267.242.7154. **Map 1, G5**

VERDE—A wide variety of colorful jewelry, accessories, perfume and whimsical gifts fill this shop. Head to the rear to watch chocolatiers make Marcie Blaine artisanal truffles, then select a few treats to take home. M-Sa 11 am-8 pm, Su noon-6 pm. www.verdephiladelphia.com 108 S. 13th St., 215.546.8700. **Map 1, I5**

WORKSHOP UNDERGROUND—Taking queues from his previous gig at the Metropolitan Museum of Art, owner Ruben Luna sets up his shop like a museum. High-end artistic pieces seamlessly mix in with affordable knick-knacks. Come here for jewelry, apparel, home decor and gifts. W-Th noon-7 pm, F-Sa 11 am-8 pm, Su 11 am-5 pm. www.workshopunderground.com. 1544 South St., 215.987.3534. **Map 1, H6**

Gourmet & Specialty Foods

DI BRUNO BROTHERS—The original Italian Market outpost of this Philly mecca for world-class cheese bustles day and night. At the Chestnut Street location, find a gourmet food emporium with takeout panini, gelato and additional specialty items. Hours vary by location. www.dibruno.com. The Market at Comcast Center, 1701 JFK Blvd., 215.531.5666. **Map 1, G4**; 1730 Chestnut St., 215.665.9220. **Map 1, G5**; Italian Market, 930 S. 9th St., 215.922.2876. **Map 1, JB**

GREEN AISLE GROCERY—A teeny tiny grocery store with an ambitious stock of products, including small-batch artisan goods from local and regional purveyors. Don't miss the hummus from Zahav, a local restaurant run by a James Beard Award-winning chef. M-F noon-8 pm, Sa 11 am-8 pm, Su noon-7 pm. www.greenaislegrocery.com. 1618 E. Passyunk Ave., 215.465.1411.

LORE'S CHOCOLATES—While in the historic district, indulge your sweet tooth with this candy shop's peanut butter balls, vanilla caramels and Liberty Bell-shaped chocolates, among other tasty selections. M-F 9 am-5:30 pm, Sa 10 am-4 pm. www.loreschocolates.com. 34 S. 7th St., 215.627.3233. **Map 1, J5**

READING TERMINAL MARKET—Founded in 1893, this market has evolved into one of the city's major food meccas, where visitors can sample international and local specialties, including cheesesteaks and Pennsylvania Dutch treats. M-Su 8 am-6 pm. www.readingterminalmarket.org. 12th and Arch sts., 215.922.2317. **Map 1, I4**

ROCKET FIZZ—Feed your nostalgia at this retro candy shop, offering everything from candy dots and whirly pops to bulk saltwater taffy, plus a variety of soda selections in flavors like bacon, s'mores and mud pie. M-Th 11 am-7 pm, F-Sa 11 am-9 pm, Su 11 am-6 pm. www.rocketfizz.com. 302 Arch St., 215.650.3163. **Map 1, K4**

TEUSCHER CHOCOLATES OF SWITZERLAND—A bright, beautiful store featuring gorgeous hand-made Swiss chocolates and exquisite champagne truffles. Fantasy packages, gift wrapping, shipping and custom orders available. M-Sa 10 am-6 pm, Su noon-5 pm. www.teuscherphiladelphia.com. The Shops at The Bellevue, 200 S. Broad St., 215.546.7600. **Map 1, H5**

Jewelry

ANALOG WATCH CO.—This independent watchmaker focuses on craftsmanship in designing minimalist timepieces, allowing natural materials to shine. Tu-Sa 9 am-5 pm. www.analogwatchco.com. 1737 E. Passyunk Ave., 484.808.5831.

BARIO-NEAL—Handcrafted in Philadelphia, this line of sophisticated jewelry is made exclusively with reclaimed precious metals, ethically sourced stones and low-impact, environmentally conscious practices. W-Th 1-7 pm, F-Su 11 am-6 pm. www.bario-neal.com. 700 S. 6th St., 215.454.2164. **Map 1, K7**

BELLA TURKA—The local owners of this jewelry shop regularly travel around the world in search of chic baubles, like gold coin necklaces, cocktail rings and chunky stone cuffs, and also offer funky items from select domestic designers. 13th and Sansom St.: M-Sa 11 am-8 pm, Su noon-6 pm. www.bellaturka.com. 113 S. 13th St., **Map 1, I5**; 1700 Sansom St., 215.560.8733. **Map 1, G5**

EGAN DAY—Housed in a stately Rittenhouse Square townhouse with minimalist furnishings, Kate Egan displays elegant necklaces, bracelets, rings and earrings from designers including Ted Muehling and Gabriella Kiss. Open M-Sa 11 am-7 pm, Su 11 am-5 pm. www.eganday.com. 260 S. 16th St., 215.443.1632. **Map 1, H6**

LAGOS—Philadelphia-based jeweler Lagos' one-and-only flagship has been a fixture, located just steps from Rittenhouse Square. This jewel-box shop features award-winning collections in sterling silver and 18-kt. gold. Steven Lagos has been designing beautiful pieces accented with gemstones, diamonds and pearls for 40 years. Friendly and knowledgeable staff makes the shopping experience a pleasure. M-Sa 10 am-7 pm, Su noon-6 pm. www.lagos.com. 1735 Walnut St., 215.567.0770. **Map 1, G5**

MARYANNE S. RITTER JEWELERS—Open since 1909, this store's experts create custom designs for fine diamonds and gemstones, and offer quality jewelry at affordable prices. Look for a large selection of cultured freshwater and saltwater pearls. M-Tu and Th-F 10 am-5 pm, W 10 am-6 pm, Sa noon-5 pm. www.maryannesritterjewelers.com. 704 Sansom St., 215.701.6255. **Map 1, J5**

TOURNEAU—This international brand offers more than 100 watch brands, including Cartier, Ferragamo, Gucci, Movado and 8,000 unique styles for men and women. M-Sa 10 am-9 pm, Su 11 am-6 pm. www.tourneau.com. Plaza at King of Prussia Mall, 160 N. Gulph Road, King of Prussia, Pa., 610.491.8801. **Map 4, A3**

Shoes

BUS STOP BOUTIQUE—British-born Elena Brennan has turned her Queen Village shop into a destination for fashionable shoes for both men and women. On historic Fabric Row, this hip footwear haven carries unique and comfy styles from hard-to-find designers. M-Th 11 am-6 pm, F 11 am-7 pm, Sa 11 am-6 pm, Su noon-5 pm. www.busstopboutique.com. 727 S. Fourth St., 215.627.2357. **Map 1, K7**

HEAD START SHOES—Located in Center City, this footwear shop stocks styles from upscale designers, including Fiorentini & Baker, Roberto Del Carlo and Vic Matie. M-Tu 10 am-6 pm, W-Sa 10 am-7 pm, Su 11 am-5 pm. www.headstartshoes.com. 126 S. 17th St., 215.567.3247. **Map 1, G5**

LAPSTONE & HAMMER—Kate Rohrer designed this only-in-Philadelphia haven for sneakerheads. While the store's collection of well-tailored menswear, grooming products and accessories have received rave reviews, what truly commands attention in this 4,000 square-foot space is its extensive sneaker collection. Open M-Sa 10 am-7 pm, Su noon-5 pm. www.lapstoneandhammer.com. 1106 Chestnut St., 215.592.9166. **Map 1, I5**



Vintage Instruments, Inc.

Featuring
C.F. Martin Guitar

Traditions That Improve with Time

507 South Broad Street,
Philadelphia, PA
215.545.1000

Martin & Co.
EST. 1833
D 35
TURKES
50

www.vintage-instruments.com

Where do you want to go?

Find the best of the city

wheretraveler.com



TOBOX SHOES—This chic local men's shop offers stylish and sophisticated looks from a wide selection of top-quality shoes, accessories and leather goods. Brands include hard-to-find labels like John Lobb, Carmina and Rancourt. M-Sa 10 am-6 pm. www.toboxshoes.com. 1822 Chestnut St., 215.644.9435. **Map 1, G5**

UBIQ—This trendy sneaker boutique features shoes by Puma and Nike SB, plus racks of skater-inspired threads from 10 Deep, Stüssy, Undeafated and Original Fake. Open M-Sa 10 am-8 pm, Su noon-6 pm. www.ubiqlife.com. 1509 Walnut St., 215.988.0194. **Map 1, H5**

Shopping Centers

THE BELLEVUE PHILADELPHIA—Inside this historic 1904 Beaux Arts building in Center City, find upscale boutiques such as Tiffany & Co., Nicole Miller, Polo Ralph Lauren and Williams-Sonoma. Dining options include world-class restaurants XIX and The Palm, plus a gourmet food court. Also here, the state-of-the-art The Sporting Club fitness facility and Hyatt at The Bellevue. Hours vary by store. www.bellevuephiladelphia.com. 200 S. Broad St., 215.875.8350. **Map 1, H5**

KING OF PRUSSIA MALL—The East Coast's largest retail shopping complex includes seven world-class department stores including Bloomingdale's, Lord & Taylor and Nordstrom, plus 400 specialty shops like Tourneau and restaurants. The mall is easily accessible from Routes 202, I-76 and the Pa. Turnpike. Open M-Sa 10 am-9 pm, Su 11 am-6 pm. www.kingofprussiamall.com. 160 N. Gulph Road, King of Prussia, Pa., 610.265.5727. **Map 4, A3**

SHOP PENN—On the University of Pennsylvania campus in University City, find more than 75 national and independent retailers (Urban Outfitters, United By Blue, Amazon and Penn Bookstore), plus top-notch dining choices, art galleries and hotels. Hours vary by location. www.shopsatpenn.com. 34th through 38th streets, Chestnut to Spruce streets **Map 1, C5 to D6**

THE SHOPS AT LIBERTY PLACE—This indoor, Center City shopping complex for fashion, jewelry, housewares and more has 55 specialty boutiques and international eateries. Retailers include Bloomingdale's The Outlet Store, ALDO Shoes and J. Crew. Take in Philadelphia from new attraction, One Liberty Observation Deck. Open M-Sa 9:30 am-7 pm, Su noon-6 pm. www.shopsatliberty.com. 1625 Chestnut St., between Liberty I and Liberty II office towers, 215.851.9055. **Map 1, H5**

Specialty Shops

PHILLY AIDS THRIFT—This nonprofit founded in 2005 sells an eclectic collection of donated items with proceeds going to local organizations involved in the fight against HIV/AIDS. M-Th 11 am-8 pm, F-Sa 11 am-9 pm, Su 11 am-7 pm. www.phillyaidsthirt.com. 710 S. 5th St., 215.922.3186. **Map 1, K7**

PLEASURE CHEST—Since 1974, this adult boutique off Rittenhouse Square has been offering intimate toys and products (lubricants, harnesses, "Rabbits," lingerie, sensual novelties) for men and women with the help of discreet, knowledgeable and friendly staff. Tu-Sa 11 am-7 pm. www.pleasurechestphilly.com. 2039 Walnut St., 215.561.7480. **Map 1, G5**

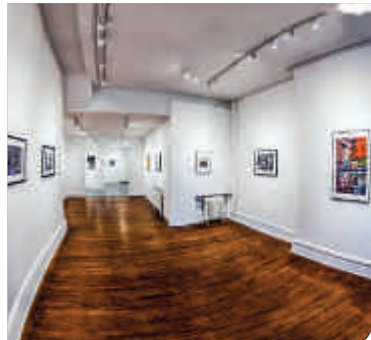
Sporting Goods & Apparel

NOCTURNAL SKATEBOARDS—One of the Philadelphia skate scene's go-to supply stops and hangouts opened in 2000 by X Games gold medalist Kerry Getz. Skaters find clothes, shoes, decks, trucks, wheels and every manner of skate accessory. www.nocturnalskateshop.com. 533 South Street, 215.922.3177. **Map 1, J7**

SHIBE VINTAGE SPORTS—Founded by local sports enthusiasts, this store features retro-style shirts and hats appealing to the fashion-forward sports fan. The retailer's Originals line utilizes the talents of local artists and screen printers. Worldwide shipping available. M-Sa 11 am-8 pm, Su till 6 pm. www.shibevintage.com. 137 S. 13th St., 215.566.2511. **Map 1, I5**

MITCHELL & NESS—The flagship store of this world-renowned sports-gear provider offers more than 1,600 authentic styles of vintage jerseys, hats, warm-ups, jackets and so much more. Sports fans should take a turn through the store just to see the museum-quality memorabilia. www.mitchellandness.com. 1201 Chestnut St., 267.273.7622. **Map 1, I5**

Galleries+Antiques | May



Da Vinci Art Alliance

Founded in 1931, this South Philly non-profit supports regional artists with year-round programs. Look for juried exhibitions, solo shows and collaborations with other nonprofit art organizations. Most events are free and open to the public. www.davinciartalliance.org. 704 Catharine St., 215.829.0466. Map 1, J7



InLiquid Art and Design

This educational resource and exhibition gallery seamlessly combines art with the Internet. Browse the work of more than 280 artists online, then browse in person at the Fishtown gallery to view even more works displayed throughout the year. www.inliquid.org. 1400 N. American St., Studio 314, 215.235.3405.



Cerulean Arts Gallery

Just off of North Broad Street, this gallery exhibits eclectic decorative and fine art from more than 100 artists and offers handmade wares from an additional 100 artisans. The studio offers instruction and weekend workshops for pros and aspiring creatives, too. www.ceruleanarts.com. 1355 Ridge Ave., 267.514.8647. Map 1, H6

Antiques Shops

ANASTACIA'S ANTIQUES—Anastacia's is brimming with affordably priced antiques and quirky collectibles of all kinds, from furnishings and lamps to dolls, books and jewelry. Staff occasionally takes shopping trips for merchandise during store hours so call in advance. Th-Sa noon-6:30 pm, Su noon-5 pm. www.anastaciasantiques.com. 617 Bainbridge St., 215.928.9111. Map 1, J7

ANTIQUÉ SHOWCASE—Find fine European furniture, lighting accessories and objets d'art at this charming antique shop located in the ritzy Rittenhouse neighborhood. M-Sa 10 am-6 pm. www.antiquesthowspace.com. 1625 Pine St., 215.545.0860. Map 1, H6

ARCHITECTURAL ANTIQUES EXCHANGE—Across 30,000 square feet of space in the Northern Liberties neighborhood, this vast warehouse stocks a range of architectural antiques, from the late 1700s through the 1930s. Exciting items have been reclaimed from French castles and churches; others include mantels, doors, beds, carved furniture and ironwork. Open M-Sa 10 am-5 pm. www.architecturalantiques.com. 715 N. Second St., 215.922.3669. Map 1, K2

FREEMAN'S—One of the premier auction houses for fine arts and antiques is also the nation's oldest. M-Th 9 am-5 pm, F 9 am-3 pm, special office hours during auction exhibitions. www.freemansauction.com. 1808 Chestnut St., 215.563.9275. Map 1, G5

GARDEN GATE ANTIQUES—Another stop in Chestnut Hill, this two-story shop features a wide range of items from West African art to Steiff animals, including but not limited to vintage and antique furnishings, clothing, jewelry and books. M-Sa 11 am-5 pm, Su noon-5 pm. www.bowmanch.com/property/gardengate. 8139 Germantown Ave., 215.248.5190. Map 3, C3

KOHN & KOHN ANTIQUES—Kohn & Kohn Antiques has been known for fine antiques in Philadelphia since 1932. Its inventory is broad with an emphasis on glass, furniture, porcelain and silver. Also check out the tobacciana collection, which includes cigarette cases, cigar cutters and elegant lighters. Open by appointment and by chance. www.kohndankohnantiques.com. 1112 Pine St., 215.923.0432. Map 1, I6

LAVENDER HILL HOME—Lavender Hill in Chestnut Hill caters to those who love decorating the home. Visitors browse unique antiques as well as newer items made to look and feel old, from candles and brass lamps to dried flowers, frames, jewelry and soaps. Lots of great gift items here. www.lavenderhill-home.com. Tu-Sa 11 am-5 pm, Su noon-4 pm. 8121 Germantown Ave., 215.248.5591. Map 3, C3

M. FINKEL & DAUGHTER—Opened in 1947 in an 1840s building on beautiful Antique Row, family-owned M. Finkel & Daughter continues to sell period antiques, 18th- and 19th-century furniture, and a highly acclaimed collection of needlework

and silk embroideries spanning the 17th to mid-19th centuries. Call for an appointment. www.samplings.com. 936 Pine St., 215.627.7797. Map 1, I6

MODE MODERNE—This modern styled gallery features furniture and the artwork from a variety of artists from the 20th and 21st centuries. Select from vintage furniture, colorful knickknacks and decor pieces by well-known artisans. Th-Sa noon-6 pm. www.modemoderne.com. 159 N. 3rd St., 215.627.0299. Map 1, K4

MODERNE GALLERY—Twenty-thousand square feet across five floors offers ample space in this historic Old City building to showcase high-quality, vintage 20th-century furniture, lighting and decorative accessories. Find French and American Art Deco and French 1940s-1950s pieces, work by George Nakashima and Wharton Esherick, and other studio crafts by Wendell Castle, David Ebner, Toshiko Takaezu, to name a few. Daily noon-5 pm. www.modernegallery.com. 111 N. 3rd St., 215.923.8536. Map 1, K4

NIEDERKORN ANTIQUE SILVER—For more than 25 years, Niederkorn Antique Silver has been focusing on 19th- and 20th-century fine silver. Located just off Rittenhouse Square, this tiny store brims with sterling Christmas ornaments, jewelry, tea sets and napkin rings, Judaica, desk accessories and books on the art of silversmithing. Tu-Th 11:30 am-7 pm, F-Sa 11:30 am-5:30 pm. www.niederkornsilver.com. 244 South 22nd St., 215.567.2606. Map 1, G6

There's a lot more going on this May. Visit us online: wheretotraveler.com

TGIF! On the first Friday of every month, art galleries and shops in the Old City neighborhood stay open late, hosting new exhibits and special events.



Pam Cummings
#yesIAMtheartist

PENNSYLVANIA GUILD OF CRAFTSMEN RITTENHOUSE SQUARE FINE CRAFT FAIR

18TH & WALNUT STREETS IN PHILADELPHIA

MAY 11 - 13, SHOW OPENS 11AM



Get travel tips and the city's inside scoop, delivered right to your inbox!

Sign up at wheretotraveler.com/newsletter-signup

Local guides. Worldwide: wheretotraveler.com

A celebration of artists, their creative process, and their responses to our city's waterways.

FREE and FAMILY FRIENDLY activities daily. AIO is open from dawn until dusk along the Schuylkill River Banks.

aio art in the open

ART in the OPEN
MAY 18-20

artintheopenphila.org

AIO 2016 Artist Harry Burlew
Music by Waddy Toon! Acoustic Radio

Major Support provided by:

THE PHILADELPHIA PRINT SHOP—Pore over the impressive collection of more than 20,000 historical prints and antique maps from the 16th through the early-20th centuries. Those looking for an affordable piece of fine art will have luck here—many prints are priced under \$100. M-Sa 10 am-5 pm. www.philaprintshop.com. 8441 Germantown Ave., 215.242.4750. Map 3, B2

Art Galleries

3RD STREET GALLERY—In the heart of Old City's gallery district, 3rd Street Gallery features a diverse mix of artists working in various media. In operation since 1978, this artist-run cooperative is devoted to presenting a quality experience of visual arts, all the while encouraging risk and experimentation in their artists' works. W-Su noon-5 pm. www.3rdstreetgallery.com. 45 N. Second St., 215.625.0993. Map 1, K4

THE BAZEMORE GALLERY—Located in Manayunk, this gallery features an array of artists inside a space whose design is based on the five elements of Feng Shui. Find pop imagery, abstract landscapes, glass blown artwork and more, plus, rotating exhibits and The Living Wall, an indoor sustainable planting panel. Open W-Su noon-7 pm. www.thebazemoregallery.com. 4339 Main St., 215.482.1119.

BLUESTONE FINE ART GALLERY—This gallery features original works by contemporary and traditional artists in a range of mediums, including painting, ceramics and sculptures. See the work of well-known and emerging local artists. Each month new exhibitions kick off during Philadelphia's First Fridays, which draws hundreds of art lovers to the neighborhood. Tu-F 10 am-5 pm, Sa noon-4 pm. www.bluestone-gallery.com. 72 N. Second St., 856.979.7588. Map 1, K4

CALDERWOOD GALLERY—Owners Gary and Janet Calderwood showcase their personal art collection of 20th-century design and fine photography across 30,000 square feet of space. Find museum-quality French Art Deco by Ruhlmann, Arbus, Dufrene and others, Mid-century Modern decorative arts and more. Gary Calderwood's photography presents a visual history of the 20th century. Ships internationally. M-F 11 am-5 pm, Sa-Su by appointment. www.calderwoodgallery.com. 242 Geiger Road, 215.546.5357.

CARRÉ D'ARTISTES—This art gallery is a leader in affordable, contemporary art, selling world-class, original paintings and specializing in a wide variety of artistic styles, from figurative and abstract to landscape, Pop and street art, all created by a vast collection of internationally known artists. Framing services available. Daily 11 am-8 pm, extended hours on First Fridays. www.carredartistesphilly.com. 104 S. 13th St., 215.735.2800. Map 1, I5

THE CENTER FOR ART IN WOOD—This not-for-profit museum, gallery and research center focuses on woodworks, showcasing all methods of wood-art-making including turned and carved sculptures by renowned artists and craftsmen. Tu-Sa 10 am-5 pm. www.centerforartinwood.org. 141 N. Third St., 215.923.8000. Map 1, K4

THE CENTER FOR EMERGING VISUAL ARTISTS—This local resource fosters the development and careers of visual artists, among them Lori Banks, Colette Fu and Jack McGovern. Open M-F 11 am-5 pm, or by appointment. www.cfeva.org. The Barclay, 237 S. 18th St., suite 3A, 215.546.7775. Map 1, G6



THE CLAY STUDIO—This gallery and educational facility promotes the craft of ceramic arts through artist residencies, studio space, gift shop, educational and outreach programs and its permanent collection. The Clay Studio is dedicated to providing programs for all artists, emerging and expert. M-Sa 11 am-6 pm, Su noon-6 pm. www.theclaystudio.org. 139 N. Second St., 215.925.3453.

F.A.N. GALLERY—Located in a 1700's Colonial building in Old City, this gallery features emerging and established artists in the classic tradition of American painting. The first floor features a different artist each month, with many from right here in Philadelphia. The second floor displays group exhibitions, ranging from figurative to landscape and still-life. Open W-Su noon-6 pm. www.thefan-gallery.com. 221 Arch St., 215.922.5155. **Map 1, K4**

FLEISHER ART MEMORIAL—In addition to offering a rotating display of wide-ranging works by local artists, this gallery also hosts an extensive catalog of inexpensive workshops and free classes for all skill levels. M-F 10 am-5 pm. www.fleisher.org. 719 Catharine St., 215.922.3456. **Map 1, J7**

FLEISHER/OLLMAN GALLERY—Founded in 1952, Fleisher/Ollman Gallery earned its reputation as a premier source of self-taught artists, and today it exhibits contemporary artists who reflect the influence of the self-taught, including Martin Ramirez, Bill Traylor and Tristin Lowe. Tu-F 10:30 am-5:30 pm, Sa noon-5 pm. www.fleisher-ollmangallery.com. 1216 Arch St., Suite 5A, 215.545.7562. **Map 1, H6**

GRAVERS LANE GALLERY—Located in Chestnut Hill, this edgy, contemporary art gallery exhibits works by both established and emerging artists from around the world. Its media spectrum is broad, including painting, sculpture, fiber and paper. M-Sa 10 am-6 pm, Su noon-5 pm. www.graverslane-gallery.com. 8405 Germantown Ave., 215.247.1603. **Map 3, B2**

JAMES OLIVER GALLERY—This unique, contemporary loft-style gallery, nestled in the heart of the Historic District, features local, national and international artists in the disciplines of painting, mixed media, photography and installation works that have been recognized by notables such as NPR and Huffington Post. W-F 5 pm-8 pm, Sa 1 pm-8 pm or by appointment. www.jamesolivergallery.com. 723 Chestnut St., 4th floor, 267.918.7432. **Map 1, J5**

KAMIN GALLERY—Housing books and objects commemorating the lives of noted Philadelphians including Benjamin Franklin, Marian Anderson and Tom Phillips, this repository also offers a fascinating gallery on the University of Pennsylvania campus, inside the Van Pelt-Dietrich Library. M-F 9 am-5 pm, Sa-Su by appointment. www.library.upenn.edu. 3420 Walnut St., 1st floor, 215.898.7555. **Map 1, D5**

THE LEONARD PEARLSTEIN GALLERY—Located in the Westphal College of Media Arts and Design at Drexel University, this gallery exhibits work across many disciplines, from architecture to fashion. National and international artists are featured, as well as Westphal professors. Open Tu-Su 11 am-6 pm. www.drexel.edu/westphal/resources/LeonardPearlsteinGallery. 3401 Filbert St., 215.895.2548. **Map 1, D5**

MOUNT AIRY CONTEMPORARY—Husband-and-wife artists Colin Keefe and Andrea Wohl Keefe run this charming exhibition space in the carriage house behind their residence. Here, find not only their own works, but also those of other artists in the region. Call for hours. www.mountairycontemporary.com. 25 W. Mt. Airy Ave., 267.270.2787

MUSE GALLERY—This artist-run Old City gallery encompasses a range of styles including abstract, conceptual and representational. Each month, the gallery highlights a different artist's work in varying disciplines, creating a new experience for each visit. W-Su noon-5 pm. www.musegalleryphiladelphia.com. 52 N. Second St., 215.627.5310. **Map 1, K4**

PAINTED BRIDE ART CENTER—This funky, interdisciplinary Old City venue features experimental theater, dance, music and visual arts by some of the world's cutting-edge artists. www.paintedbride.org. 230 Vine St., 215.925.9914. **Map 1, K3**

PENNSYLVANIA GUILD OF CRAFTSMEN—One of the nation's largest and most recognized craft guilds offers a variety of classes from sketching to blacksmithing, and organizes several craft shows, including the annual Rittenhouse Square Fine Craft show. www.pacrafts.org. 335 N. Queen St., Lancaster, Pa., 717.431.8706.

PHILADELPHIA PHOTO ARTS CENTER—A nonprofit organization devoted to the study, practice and appreciation of photography, the PPAC offers educational programs, photographic exhibitions and lectures by practicing artists within the Crane Arts complex. Open Tu-Sa 10 am-6 pm. www.philaphotoarts.org. 1400 N. American St., Suite 103, 215.232.5678.

THE PHILADELPHIA SKETCH CLUB—Founded in 1860 by six former students of the Pennsylvania Academy of the Fine Arts, the Philadelphia Sketch Club is America's oldest artists club. Visit monthly exhibits by established and emerging artists in the main gallery of the historic building. Open W and F-Su 1 pm-5 pm. www.sketchclub.org. 235 S. Camac St., 215.545.9298. **Map 1, I6**

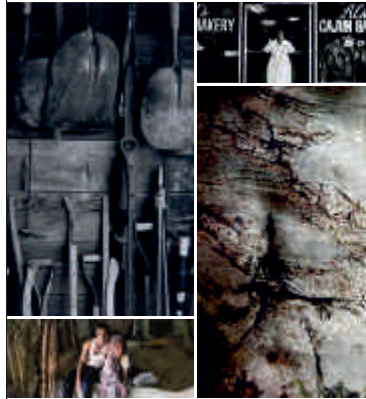
THE PLASTIC CLUB ART GALLERY—Since 1897, this gallery has been devoted to the promotion and preservation of the visual (plastic) arts in Philadelphia. Open during workshop hours or by appointment. www.plasticclub.org. 247 S. Camac St., 215.545.9324. **Map 1, I6**

THE PRINT CENTER—Founded in 1915, this nonprofit gallery was one of the very first venues in the country dedicated to prints. The center continues to support printmaking and photography as vital contemporary arts with regularly scheduled exhibitions and a marvelous gallery store. Open Tu-Sa 11 am-6 pm. www.printcenter.org. 1614 Latimer St., 215.735.6090. **Map 1, H6**

SNYDERMAN-WORKS GALLERIES—The acclaimed Works Gallery, founded in 1965, is a contemporary studio crafts gallery. The Snyderman Gallery, opened in 1983, features paintings, prints, photos and sculpture. Open Tu-Sa 10 am-6 pm. www.snyderman-works.com. 303 Cherry St. 215.238.9576. **Map 1, K4**

TWENTY-TWO GALLERY—Admire beautiful paintings, sculptures, photography and mixed-media works by local and national artists at this 22-member gallery. W-Su noon-6 pm, or by appointment. www.twenty-twogallery.com. 236 S. 22nd St., 215.772.1911. **Map 1, F6**

View Finders | Four Photographic Voices



May 26 – August 26, 2018

Get tickets online at MichenerArtMuseum.org



CLOCKWISE FROM LEFT TO RIGHT: Paula Chantee © 1940; From the series High Plains Farm, Adrian, Texas (ca. 1950). Gilded silver chalice contact print, 6 3/4 x 4 2/4 in.; James A. Michener Art Museum. Museum purchase funded by Anna and Joseph Gaudin, 1986; © Michael A. Bantz © 1940; New Orleans, 1960. Gilded silver chalice print, 7 1/2 x 10 1/2 in.; James A. Michener Art Museum. Museum purchase funded by Anna and Joseph Gaudin, 2008; © J. Frank H. Peterson © 1950; Using the Body of Jesus, 2006. Archival pigment print, 17 x 22 in.; James A. Michener Art Museum. Gift of the artist, 2011; © 2011; Catherine Johnson © 1950; Grandson and Carl Johnson, from the series 1008, 2014. Archival pigment print, 18 1/2 in.; Courtesy of the artist.



Heather Blanton
Golfers with Green
36 x 36, Acrylic

Bluestone Fine Art Gallery
72 North 2nd Street • Philadelphia
856.979.7588 • bluestone-gallery.com
Complimentary Shipping within the United States



Dining



Revolution Taco

When the owners of three popular food trucks joined forces to create this spot, it was bound to become a success. And it has. Expect the fast-casual concept of a food truck, boosted by unique ingredients and a comfortable place to dig in. www.therevolutiontaco.com. 2015 Walnut St., 267.639.5681. **Map 1, G5**



The Juice Merchant

Located in leafy Manayunk, this charming family-owned cafe has become a go-to for the area's health conscious. Find a full menu of plant-based offerings including cold-pressed juices, smoothies, salads and sandwiches all made with organic ingredients. www.thejuicemerchant.com. 4330 Main St., 215.483.8888.



Hugo's Frog Bar & Chop House

This glam steakhouse located inside SugarHouse Casino offers Chicago-style dining with Gibsons Prime Angus Beef and seafood. An extensive wine list, waterfront views and live entertainment enhance the experience. www.hugosphilly.com. 1001 N. Delaware Ave., 215.717.3900. **Map 1, L1**

Avenue of the Arts

AQIMERO—New Latin. Inside the lobby of the iconic Ritz-Carlton Philadelphia, across from City Hall, acclaimed chef Richard Sandoval serves up everything from sushi and ceviche to sustainably caught seafood creations with a Latin accent. B, D (daily), L (M-F), Br (Sa-Su). www.aqimero.com. 10 Avenue of the Arts, 215.523.8200. \$\$\$ **Map 1, H5**

MCCORMICK & SCHMICK'S—Seafood. This bustling 290-seat establishment brings the flavors of the Pacific Northwest to Philadelphia, plus draft beers, single malts and Northwest wines. For a more intimate meal, head upstairs to cozy booths. L, D (daily). www.mccormickandschmicks.com. 1 S. Broad St., 215.568.6888. \$\$\$ **Map 1, H5**

MORTON'S, THE STEAKHOUSE—Steak. An extensive wine selection is just a bonus of this signature Chicago steakhouse experience. Wet-aged prime beef broiled Midwestern-style makes for hearty, large portions, but also try pork, lamb and veal chops, as well as tasty seafood offerings. D (daily). www.mortons.com. 1411 Walnut St., 215.557.0724. \$\$\$ **Map 1, H5**

RUSSET—American. Tuck in to this charming contemporary dining room housed in an 1877 townhouse for simple, soulful fare from chef-owners Andrew and Kristin Wood. The Italian and French-inspired menu changes regularly, but always focuses on fresh and housemade components. BYOB. D (Tu-Su), Br (Sa-Su). www.russetphilly.com. 1521 Spruce St., 215.546.1521. \$\$\$ **Map 1, H6**

SHOPS AT THE BELLEVUE FOOD COURT—Food Court. Located in the historic Bellevue building, this gourmet food court offers everything from Asian cuisine to classic Philly cheesesteaks. See website for details. www.bellevuephiladelphia.com. 200 S. Broad St., 215.875.8350. \$ **Map 1, H5**

SO CREPE—French. French owners Frederic Elmalek and Fabrice Goutte batter up authentic sweet and savory crepe varieties and make everything in house, from the whipped cream to the salted butter caramel. L, D (M-Sa), Br (Su). www.socrepe.com. 1506 South St., 267.761.9310. \$ **Map 1, H7**

XIX (NINETEEN)—American. For a special evening, take the elevator to the 19th floor of the Hyatt Philadelphia at The Bellevue. Settle in beneath the restaurant's spectacular pearl chandelier, or enjoy a meal in the more relaxed cafe space. B, L (M-Sa), D (daily), Br (Su). www.hyatt.com/corporate/restaurants/nineteen-restaurant/en/home. html. Broad and Walnut streets, 215.790.1919. \$\$\$ **Map 1, H5**

VALANNI—Mediterranean. Sleek yet laid-back, this neighborhood spot is a few blocks from the Avenue of the Arts. Tuck into modern Medi-Latin entrees and appetizers like spicy pulled chicken empanadas, lamb sliders and paella. D (daily), Br (Su). www.valanni.com. 1229 Spruce St., 215.790.9494. \$\$\$ **Map 1, I6**

There's a lot more going on this May. Visit us online: wheretotraveler.com

VOLVER—American. Volver is Spanish for "to return," and with this high-class restaurant, chef Jose Garces does just that, revisiting his favorite culinary experiences from around the world. The diverse, seasonal, and often locally sourced menu features some of the most innovative dishes in the city. D (Tu-Sa). www.volverrestaurant.com. 300 S. Broad St., 215.670.2302. **Map 1, H6**

Center City & Rittenhouse

24—Italian/Pizza. Antipasti, pizza and pasta dishes are the focus at this Chef Garces eatery along the Schuylkill Banks. Classic pizza options are served alongside more unusual choices including lamb sausage or clam pizzas. Apart from the wood-fired fare, diners will be treated to an extensive Italian wine list. The "Aperitivo" happy hour occurs daily with drink specials, snacks and small plates. L (M-F), D (daily), Br (Sa-Su). www.24philly.com. 2401 Walnut St., 215.333.3331. \$\$ **Map 1, F5**

BANK & BOURBON—American. This speakeasy-style bar and restaurant in the lobby of the Loews Hotel prepares innovative and far-reaching Americana dishes, ranging from the berry smoothie on the breakfast menu to the 32-ounce dry-aged cowboy steak on the dinner menu. They even barrel age their own liquor, and offer a locker membership for true bourbon lovers who want to age their own stock. B, L (M-F), D (daily), Br (Sa-Su). www.bankandbourbon.com. 1200 Market St., 215.231.7300. \$\$ **Map 1, I5**

➔ **HISTORIC HOT SPOT** Opened in 1773, City Tavern (page 24) still serves the dishes once favored by regulars like Thomas Jefferson and Benjamin Franklin.



BAOLOGY—Taiwanese. Husband-and-wife team, Judy Ni and Andy Tessier's first restaurant serves up fast-casual street food with a roster of ingredients that changes with the season. On the menu, find Ni's childhood favorites the way her grandmother made: Berkshire pork, shrimp and spinach potstickers; Taiwanese free-range fried chicken; wild-caught shrimp ruen bings (like a mini burrito). L (M-Sa), D (M-F). 215.999.2263. www.baology.com. 1829 John F. Kennedy Blvd. \$ **Map 1, G4**

BAR BOMBÓN—Vegan. Like the rest of the items on the menu here, the Puerto Rican empanadas and Venezuela-influenced arepas include only veggies. If time is tight, order nachos and sweet plantains to go from the convenient takeout window. L, D, Br (daily). www.barbombon.com. 133 S. 18th St., 267.606.6612. \$ **Map 1, G6**

BARCLAY PRIME—Steak. This sophisticated boutique steakhouse boasts prime cuts, a raw bar and a bounty of caviars, along with Philly's most opulent sandwich, by request: a \$120 cheesesteak complete with a wagyu rib-eye, foie gras, and truffled Cheez Whiz on a fresh baked sesame roll. D (daily). www.barclayprime.com. 237 S. 18th St., 215.732.7560. \$\$\$ **Map 1, G6**

BISTRO LA BAIÀ—Italian. Since 1998, this intimate, relaxed bistro has provided fresh, reasonably priced Italian and Mediterranean specialties and top-notch service. Be sure to bring your own wine. BYOB. D (daily). (Cash only). www.bistolabaia.com. 1700 Lombard St., 215.546.0496. **Map 1, G6**

BLUESTONE LANE—Coffee House. This Australian-style cafe pours caffeinated drinks, plus a signature avocado "smash" on multigrain toast with sunflowers and a pepita-seed pesto, goat cheese and an optional organic poached egg. B, L (daily). www.bluestonelaneny.com. 1701 Locust St., 718.374.6858. **Map 1, G6**; One S. Penn Square, 718.374.6858.

BUTCHER AND SINGER—Steak. This stunning steak and chop house from Stephen Starr has a modern supper-club vibe, thanks to 28-foot-high ceilings, seductive leather booths, bold draperies and two magnificent chandeliers. It's a glam setting for tucking into Starr's top-notch steaks and chops. L (M-F), D (daily). www.butcherandsinger.com. 1500 Walnut St., 215.732.4444. \$\$\$ **Map 1, H5**

DAVIO'S NORTHERN ITALIAN STEAKHOUSE—Steak. On the second floor of the historic Provident Bank Building, Davio's serves prime natural-aged steaks as well as veal chops and seafood beneath soaring 24-foot ceilings. B, L (M-F), D (daily), Br (Su). www.davios.com. 111 S. 17th St., 215.563.4810. \$\$\$ **Map 1, G5**

DEL FRISCO'S DOUBLE EAGLE STEAK HOUSE—Steakhouse. Enjoy top-quality steaks in an elegant booth or drink up at one of a handful of bars located within the sweeping former First Pennsylvania Bank building. Patrons can dine in the Vault Room (a former bank vault) or below the restaurant's extravagant three-story wine tower. L (M-F), D (daily). www.delfriscos.com. 1426 Chestnut St., 215.246.0533. \$\$\$ **Map 1, H5**

DIZENGOFF—Israeli. Beard winner Michael Solomonov highlights his signature hummus with a simple menu: five variations rotated daily—think lamb, cabbage, chicken and beets—and come with pita, Israeli salad and pickles. Inside, picnic tables fill the cozy space, while outside, prime seats along Sansom Street make for great people

watching in good weather. L, D (daily). www.dizengoffphilly.com. 1625 Sansom St., 215.867.8181. \$ **Map 1, H5**; Whole Foods, 2101 Pennsylvania Ave., 215.557.0015 **Map 1, G3**

ERAWAN THAI CUISINE—Thai. This inviting BYOB offers tasty and authentic dishes with fresh ingredients. A friendly staff helps guests select spices to fit specific tastes. BYOB. L, D (Tu-Su). www.erawanthaiphilly.com. 123 S. 23rd St., 215.567.2542. \$ **Map 1, F5**

FINE PALATE—Global American. This fine-dining establishment focuses on globally inspired fare using high-quality ingredients. Enjoy fried oysters at brunch and pork belly, quail and black truffle mac and cheese at dinner. D (Tu-Sa), Br (Sa-Su). www.finepalategroup.com. 231 S. 15th St., 267.318.7971. **Map 1, H6**

GOLDIE—Middle Eastern. From James Beard Award-winner Michael Solomonov and Steve Cook, owners of lauded Zahav, comes this fast-casual concept with a simple menu: falafel, fries and tehina shakes. Located above Rooster Soup Company. L, D (daily). www.goldiefalafel.com. 1526 Sansom St., 267.239.0777. \$ **Map 1, H5**

HAI STREET KITCHEN—Sushi. At Hai Street you can get a Sushi roll the size of a burrito. That's right. It basically is a burrito except with nori and a wider range of ingredients. You can make your own roll or pick from a monthly-changing set of signature recipes. L, D (daily). www.haistreetkitchen.com. 32 S. 18th St., 215.964.9465. **Map 1, G5**; 1625 Chestnut St., 215.234.3000; 160 N. Gulph Road, King of Prussia, Pa., 610.290.8576.

HARP & CROWN—American. Upstairs, a vintage-walpapered 140-seat dining room provides Old World-style ambiance, while downstairs, a bar and two-lane, reservations-only bowling alley called Elbow Lane keep revelers entertained. For sustenance, find wood-fired pizza, charcuterie and New American entrees, plus a distinctive cocktail list. D (daily), Br (Sa-Su). www.harpcrown.com. 1525 Sansom St., 215.330.2800. \$ **Map 1, H5**

MARATHON GRILL—American. Popular with the downtown work crowd, families and ladies who lunch, this casual spot features all day breakfast, salads, great grilled items, burgers and smoothies. Hours vary by location. www.marathongrill.com. 121 S. 16th St., 215.569.3278. **Map 1, H5**; 1818 Market St., 215.561.1818. **Map 1, G5**; 1839 Spruce St., 215.731.0800. \$ **Map 1, G6**

MELTKRAFT—Sandwiches. Inventive grilled cheese sandwiches like you've never had before—homemade cheeses from Valley Shepherd Creamery are taken to the next level in these decadent grilled sandwiches stuffed with everything from brisket and baked mac 'n cheese to caramelized onion and potato chips. Grill your sandwich in bacon or duck fat and select from add-ins including roast tomato, ham and cranberry chutney. L, D (daily). www.meltkraft.com. Reading Terminal Market, 51 N. 12th St., 267.639.3309. \$ **Map 1, G5**; 46 S. 17th St., 215.687.4950. \$ **Map 1, I4**

THE PRIME RIB—Steak. This "civilized" supper club serves acclaimed USDA prime cuts, seafood that's flown in daily and wines from a top-notch list. The sophisticated dining room takes diners back to the 1940s, with live piano nightly in the romantic, dimly lit lounge. D (daily). www.theprimerib.com. 1701 Locust St., 215.772.1701. \$\$\$ **Map 1, G6**

R2L—American. On the 37th floor of Two Liberty Place, Chef Daniel Stern gives modern twists to traditional American flavors. The stunning skyline views make R2L one of Philly's most spectacular dining destinations. D (daily). www.r2restaurant.com. 50 S. 16th St., 37th floor, 215.564.5337. \$ **Map 1, H5**

ROUGE—American. Overlooking Rittenhouse Square, an elegant crowd tucks into the sumptuous dining room to feast on upscale comfort food (like the Rouge Burger with caramelized onions and Gruyere), or sip a stylish cocktail at the ever-popular bar. When the weather is fine, the patio tables fill quickly. L (M-F), D (daily), Br (Sa-Su). www.rouge98.com. 205 S. 18th St., 215.732.6622. \$ **Map 1, G5**

SEAFOOD UNLIMITED—Seafood. Located just off of Rittenhouse Square, this intimate neighborhood favorite specializes in simply prepared fresh fish and seafood selections. D (M-Sa). www.seafoodunlimited.com. 270 S. 20th St., 215.732.3663. \$\$\$ **Map 1, G6**

SHAKE SHACK—American. This always-hopping milkshake shop offers burgers, hot dogs, shakes, fries and more. Try a "concrete," a customizable dense frozen custard with toppings blended at high speed, or order a treat for your dog. L, D (daily). www.shakeshack.com. 2000 Sanson St., 215.809.1742. \$ **Map 1, G5**; 3200 Chestnut St., 267.338.3464.

SNAP KITCHEN—American. New to Philadelphia, this Texas-based fast-casual spot offers healthy takes on favorites, with most entrees under 500 calories. Also try their full line of cold-pressed juices and snacks. B, L, D (daily). www.snapkitchen.com. 1901 Chestnut St., 215.845.0002. **Map 1, G5**

SQUARE 1682—International. Chef Bobby Surdam serves up creative, flavorful combinations at Square 1682, located adjacent to the stylish Hotel Palomar. You'll find shareable plates and a vibe that blends casual and cosmopolitan into a distinctly cool dining experience. And when you're on the go, try the seasonal lunch menu with express options that are quick and delicious. B, L (M-F), D (daily), Br (Sa-Su). www.square1682.com. 121 S. 17th St., 215.563.5008. \$ **Map 1, G5**

STEVE'S PRINCE OF STEAKS—Cheesesteaks. Steve's has been a cheesesteak institution in Philadelphia for more than three decades. Served on a long, thin roll that has just the right amount of chew, the cheesesteak here features large pieces of grilled rib-eye and a generous helping of whiz and fried onions. L, D (daily). www.stevesprinceofsteaks.com. 41 S. 16th St., 215.972.6090. **Map 1, H5**

TEQUILAS—Mexican. This sexy, dimly lit spot is Philly's downtown destination for upscale, authentic Mexican cuisine. And, of course, more than 100 tequilas are available at the gorgeous front bar. L (M-F), D (daily), Br (Su). www.tequilasphilly.com. 1602 Locust St., 215.546.0181. \$\$\$ **Map 1, H6**

TRIA—Wine Bar. Three of the world's great pleasures (wine, beer and cheese) converge at this innovative bar and small-plate restaurant. L, D (daily). www.triacafe.com. 123 S. 18th St., 215.972.8742. **Map 1, G5**; 1137 Spruce St., 215.629.9200. \$ **Map 1, I6**; 2005 Walnut St., 215.557.8277

VEDA—Indian. This dining room sets an elegant tone for a menu of Northern Indian food with a modern bistro touch. Dig into delectable small plates like masala crab cakes and scallops dressed in a roasted pepper chutney. Mains include familiar favorites, plus out-of-the-box options like a curry with tofu and peas. A selection of tandoori meats and roti breads rounds out the tasty offerings, with a full bar pouring wine, beer and craft cocktails. L (M-F), D (daily), Br (Sa-Su). www.vedaphilly.com. 1920 Chestnut St., 267.519.2001. \$ **Map 1, G5**

VERNICK FOOD & DRINK—American. Modern refinement and high-quality ingredients are the hallmarks of this husband-and-wife operation. James Beard Award-winning chef Greg Vernick's thoughtful menu of global plates showcases techniques he perfected while working in kitchens with Jean-Georges Vongerichten around the world. Don't miss the delectable entrees roasted in a wood oven, including the organic Amish chicken. Reservations recommended. D (Tu-Su). www.vernickphilly.com. 2031 Walnut St., 267.639.6644. \$\$\$ **Map 1, G5**

VIC SUSHI—Sushi. This no-frills BYOB plates classic crowd-pleasers like Philadelphia and California rolls, along with inventive house specials and delicious tuna dumplings. L, D (M-Sa). www.vic-sushi.com. 2035 Sansom St., 215.564.4339. \$ **Map 1, G5**

VILLAGE WHISKEY—American. The cozy, saloon-inspired space (think dim lighting, antique mirrors and leather banquettes) serves a wealth of whiskey and inventive cocktails alongside simple bar food and addictive burgers. L, D (daily), Br (Sa-Su). www.villagewhiskey.com. 118 S. 20th St., 215.665.1088. \$\$\$ **Map 1, G5**

Chinatown

DIM SUM GARDEN—Dim Sum. This popular BYOB dim sum spot brings authentic Shanghai cuisine alongside delicious dim sum offerings like scallion pancakes and soup dumplings. Cash only. L, D (daily). www.dimsungardenphilly.com. 1020 Race St., 215.873.0258. **Map 1, I4**

NAN ZHOU HAND DRAWN NOODLE HOUSE—Chinese. The fresh soups and handmade noodles alone make Nan Zhou a must-stop Chinatown destination. BYOB, cash only. L, D (daily). www.nanzhounoodlehouse.com. 1022 Race St., 215.923.1550. \$ **Map 1, J4**

SANG KEE PEKING DUCK HOUSE—Chinese. Since 1980, Sang Kee has been a destination for authentic Hong Kong-style Chinese cuisine, including Peking duck and spot-on wonton soup. Three floors of seating ensures any wait for a table will be minimal. L, D (daily). www.sangkeechinatown.com. 238 N. Ninth St., 215.925.7532. \$ **Map 1, I4**

SPREAD BAGELRY—Coffeeshop. Montreal-style wood oven bagels and homemade spreads utilizing seasonal, local and organic ingredients are the name of the game at Spread and don't miss out on the B.Y.O.V. (Bring Your Own Vodka) policy for Bloody Marys to spice up the weekends. B, L (daily), Br (Sa-Su). www.spreadbagelry.com. 262 S. 20th St., 215.545.0626. \$ **Map 1, G6**

VIETNAM RESTAURANT—Vietnamese. This beloved hole-in-the-wall eatery located in the heart of Chinatown serves authentic Vietnamese cuisine at accessible prices. On the third floor is Bar Saigon, modeled after 1930s Saigon dance clubs, where

guests sing karaoke while sipping tasty cocktails. L, D (daily). www.eatatvietnam.com. 221 N. 11th St., 215.592.1163. \$ **Map 1, I4**

Convention Center

HARD ROCK CAFE—American. Philly's outpost of the international phenomenon is located in the historic Reading Terminal train station, steps from the Convention Center and a few blocks from the historic district. Inside, the restaurant is filled with its trademark rock memorabilia, plus a gift shop of Hard Rock-branded souvenirs. On the menu, find favorites like "Legendary Burgers," steaks, salads and sandwiches. L, D (daily). www.hardrock.com. 1113-31 Market St., 215.238.1000. **Map 1, I4**

MOLLY MALLOY'S—Pub/Bar. Nestled in the heart of the historic Reading Terminal Market, this airy gastropub, from the folks behind Iovine Brothers Produce, serves seasonal fare from chef Bobby Fisher and pours craft beers, 24 of which are on draft. B, L, D (daily). www.mollymalloyshilly.com. Reading Terminal Market, 1136 Arch St., 267.525.1001. \$ **Map 1, I4**

READING TERMINAL MARKET—International. Founded in 1893, Reading Terminal Market has evolved into one of Philadelphia's major dining destinations, a food mecca where you can taste international and local specialties, including cheesesteaks and Pennsylvania Dutch treats. B, L, D (daily). www.readingterminalmarket.org. 12th and Arch streets, 215.922.2317. \$ **Map 1, I4**

East Passyunk Avenue

BING BING DIM SUM—Dim Sum. This spot brings a new, modern spin on the classic dim sum. Look for traditional soup dumplings alongside roast pork bao filled with sharp provolone and long hot, plus crispy lamb rolls and congee made with butternut squash. Pair all that goodness with a shareable pitcher of cocktails. L (F-Su), D (daily). www.bingbingdimsum.com. 1648 E. Passyunk Ave., 215.279.7702. \$

FOND—American. This intimate contemporary American restaurant is flecked with touches of chef Lee Styer's classic French training. The refined, seasonal menu might include such gems as Thai curry escargot, seared foie gras with cranberries or the delicious Beef Short Ribs with Bordelaise sauce. D (Tu-Su), Br (Su). www.fondphilly.com. 1537 S. 11th St., 215.551.5000. \$\$\$ **Map 3, D3**

LAUREL—French. Laurel is the first restaurant by chef Nicholas Elmi. One bite of his transporting French-American food and that victory will make all the sense in the world. The fresh ricotta gnocchi is a must-try. D (Tu-Sa). www.restaurantlaurel.com. 1617 E. Passyunk Ave., 215.271.8299. **Map 3, D3**

LE VIRTU—Italian. Dishes celebrate the Abruzzo region of Italy while the menu changes seasonally to take full advantage of the freshest local ingredients and reflect the diversity of the Abruzzese table. Expect homemade pastas, and an array of meat and seafood dishes. D (daily). Tuesday is BYOB with no corkage fee. www.levirtu.com. 1927 E. Passyunk Ave., 215.271.5626. \$ **Map 3, C4**

NOORD—Dutch/Scandinavian. This classic BYOB bistro with a Northern European focus features locally farmed produce and meats, served in a relaxed and friendly atmosphere. Breads and desserts are made in-house, as are the smoked and cured fish and meats. All you have to do is bring



the wine. D (W-Su), Br (Su). www.noordphilly.com. 1046 Tasker St., 267.909.9704. \$\$\$

PARADISO—Italian. As a key player in the burgeoning East Passyunk Avenue dining scene, Paradiso brings fresh ingredients to mouth-watering dishes. Expect hand-rolled gnocchi, Hudson Valley duck breast and whole-roasted branzino. L (Tu-F), D (Tu-Su). Sundays BYOB with no corkage fee. www.paradisophilly.com. 1627 E. Passyunk Ave., 215.271.2066. \$ **Map 3, D3**

SQUARE PIE—Pizza & Pasta. Brooklyn-style pizza is the name of the game at the aptly-titled Square Pie, where Brooklyn-born Gene Giuffi fires up thick Sicilian-style pizza with chef-inspired toppings. The pasta and appetizer dishes are absolutely delicious so arrive hungry! D (daily). www.squarepiephilly.com. 801 E. Passyunk Ave., 215.238.0615. \$ **Map 3, D3**

STARGAZY—British. The lunch and supper (read: early dinner) crowd here digs into hearty, regional British cuisine. Pie and mash is a staple of the menu, and flavors run the gamut from traditional beef and onion to daily specials. Other house-made noshes include sausage rolls, Cornish pasties and banoffee pie. 1838 E. Passyunk Ave., 215.309.2761. \$

TOWNSEND—French. From broiled oysters to sauteed sweetbreads and seared duck breast, wine and food offerings follow the seasons at chef-owner Townsend Wentz's eponymous fine-dining spot, which is also known for masterful food and wine pairings. If you can't get a table, try the bar, where the full dinner menu is also available. D (W-M). www.townsendrestaurant.com. 1623 E. Passyunk Ave., 267.639.3203. \$\$\$ **Map 3, D3**

Filter Square

PUB & KITCHEN—Contemporary European. Opened in 2008, Pub & Kitchen combines the sophistication of contemporary European cuisine with the comfort and warmth of an authentic neighborhood tavern. With a frequently changing menu and an extensive list of spirits, beer and wine, Pub & Kitchen is a casual and energetic space where well-crafted food and drink go hand-in-hand. D (daily), Br (Sa-Su). www.thepubandkitchen.com. 1946 Lombard St., 215.545.0350. \$\$\$ **Map 1, G6**

RIVAL BROS. COFFEE BAR—Coffeeshop. In-demand roasters Rival Brothers' storefront on the Schuylkill River is a top-spot for excellent brewed coffee, but it's also a breakfast go-to, offering baked goods and sandwiches from locals including High Street on Market and Machine Shop Boulangerie. In warmer months, diners dig into house-made ice cream. B, L, D (daily). www.rivalbros.com. 2400 Lombard St., no phone. \$ **Map 1, F6**

Manayunk

BOURBON BLUE—American. This hotspot features New American cuisine with a New Orleans accent. Dig into favorites like Southern fried chicken, jambalaya and country-style ribs. On weekends, the Canal Lounge offers live entertainment. D (daily), Br (Sa-Su). www.bourbonblue.com. 2 Rector St., 215.508.3365. \$

JAKE'S RESTAURANT AND COOPER'S WINE BAR—American. Jake's and Cooper's are upscale-yet-comfortable spots to enjoy high-quality food and carefully selected wines. At Jake's, dig into



THE GUIDE

delicious dishes like crab cakes, chicken breast stuffed with mushrooms duxelle, duck à l'orange, made with organic, locally grown ingredients. Pair entrees with wines from Cooper's top-notch collection. L, D (Daily), Br (Su). www.jakesrestaurant.com. 4365 Main St., 215.483.0444. \$\$

MANAYUNK BREWERY & RESTAURANT—Pub/Bar. Start your meal with one of the brewery's hand-crafted beers made on site. The eclectic menu features stone-oven pizzas, sushi, grilled steaks, fresh salads and classic burgers. Live music daily. L, D (daily), Br (Su). www.manayunkbrewery.com. 4120 Main St., 215.482.8220. \$\$

OLD EAGLE TAVERN—Tavern. One of the best-kept secrets in Manayunk, this Old World-style tavern specializes in reinvented bar fare and an extensive beer collection, including excellent crafts, 11 rotating drafts and 60+ bottles. D (daily), Br (Sa-Su). www.oldeagle tavern.com. 177 Markle St., 215.483.5535. \$\$

Midtown Village

BARBUZZO—Mediterranean. The rustic furnishings here set a cozy vibe for the Mediterranean-influenced dishes and well-stocked bar. Reserve a table for simple, yet flavorful fare, including roasted bone marrow, pan-seared gnocchi and grilled fresh fish. L (M-Sa), D (daily). www.barbuzzo.com. 110 S. 13th St., 215.546.9300. \$\$\$ Map 1, I5

BRÜ CRAFT & WURST—German. An indoor bierhall and wursthaus serving up delicious Bavarian/American cuisine, including pork belly, weiner schnitzel, and, of course, assorted wurst. The bierhall features 39 German domestic and import drafts on tap. For \$5, purchase a Haus Key from a server or bartender and start pouring your own beer from their self-serve, iPad-controlled bier wall where brews cost as little as 30 cents per ounce. L, D (daily) www.bruphilly.com. 1318 Chestnut St., 215.800.1079. Map 1, I5

BUD AND MARILYN'S—American. Head toward the neon sign on 13th and Locust to this mid-century joint that's garnered plenty of buzz. In "Mad Men"-style environs, tuck into upgraded retro-American classics including fried chicken with housemade hot sauce and short rib stroganoff. On Sundays, groups and diners with kids in tow dig into caramelized apple french toast and warm pecan-cinnamon rolls during brunch. L (M-F), D (daily), Br (Sa-Su). www.budandmarilyns.com. 1234 Locust St., 215.546.2220. Map 1, I6

CAPOGIRO GELATO CAFE—Sweets. Fine artisanal gelato and sorbetto, plus coffee, sandwiches, soups and salads. Daily flavors of the delicious frozen treats might include champagne mango, burnt sugar or Fior di Latte (made with milk sourced from a single herd in Lancaster County). B, L, D (daily). www.capogirogelato.com. 119 S. 13th St., 215.351.0900. Map I5; 117 S. 20th St., 215.636.9250. Map G5; 233 Chestnut St., 215.897.9999. Map B5; 1625 E. Passyunk Ave., 215.462.3790. \$

CHARLIE WAS A SINNER—Vegan. This creative cafe and bar is even more so with its menu. Look for delicious dinners and tapas, and a full bar with a plant-based selection of signature cocktails. D (daily). www.charliewasasinners.com. 131 S. 13th St., 267.758.5372. Map 1, I5

CHEU NOODLE BAR—Asian. This cozy spot focuses on noodle bowls with a variety of ingredients. The miso ramen bowl is a favorite and comes with pork shoulder, a soft-boiled egg and black garlic. Small plates include creative (not to mention tasty) fare like black garlic wings and pork pizza dumplings. L, D (daily). www.chounoodlebar.com. 255 S. 10th St., 267.639.4136. \$ Map 1, I6; 1416 Frankford Ave., 267.758.2269.

DOUBLE KNOT—Pan Asian. The main floor of this two-story restaurant by Michael Schulson (of Sampan fame) pours Elixir Coffee Roasters drinks and offers pastries, plus fast-casual Vietnamese fare during the day, with drinks from a full-service bar at night. Downstairs find a cozy Japanese-style izakaya serving small plates like miso soup and bao buns filled with duck scrapple. B, L, D (daily). www.doubleknotphilly.com. 120 S. 13th St., 215.631.3868.

INDEBLUE—Indian. Take your taste buds on a journey at this neighborhood hot spot. Restaurant goers will be treated to live sitar and tabla performances every Sunday during brunch. Go for the maharaja cheese board, shrimp and crab moilee or try other traditional Indian dishes as well as brunch classics with an Indian spin. L (M-F), D (daily), Br (Sa-Su). www.indebluerestaurant.com. 205 S. 13th St., 215.545.4633. \$ Map 1, I5

NOMAD PIZZA—Pizza. This casual corner spot with an industrial vibe dishes up wood-fired pies with quality ingredients, many from local producers. Pair 'zas with wine or Italian sodas. Sweets fiends indulge in a Nutella pizza plus other desserts including ricotta cheesecake and artisanal sorbets. L F-Su, D (Tu-Su). www.nomadpizzaco.com. 611 S. 7th St., 215.238.0900. \$ Map 1, J7

NOMAD ROMAN—Pizza. As its name suggests, the cozier sister spot to Nomad Pizza dishes up thin-crust, Roman-style pies, highlighting top-notch ingredients like nduja sausage, prosciutto di Parma, truffles and Castelvetro olives. For a spin on a regional classic, try the Trenton tomato pie, an "upside down pizza" twist. www.nomadpizzaco.com. 1305 Locust St., 215.644.9287. Map 1, H6

OPA—Mediterranean. Classic, craveable Greek dishes like saganaki and grilled octopus get modern updates from bright ingredients like citrus, herbs and chiles at this sleek, 70-seat spot. OPA's Drury Beer Garden is open Th-Sa. D (daily). www.opaphiladelphia.com. 1311 Sansom St., 215.545.0170. \$ Map 1, H5

SAMPAN—Pan-Asian. This 95-seat gem showcases chef Michael Schulson's passion for Asian flavors and exquisite presentations. Mix and match from the array of reasonably priced small plates at dinner and happy hour. Head around back to the Graf-fiti Bar for cocktails. D (daily). www.sampanphilly.com. 124 S. 13th St., 215.732.3501. \$ Map 1, I5

STRANGELOVE'S—American. This 17-tap, two-floor restaurant craft beer destination serves up inspired vegetarian, vegan and omnivore-friendly fare. L, D (daily), Br (Sa-Su). www.strangelovesbeerbar.com. 216 S. 11th St., 215.873.0404. \$ Map 1, I5

TREDICI ENOTECA—Mediterranean. This lovely dining room focuses on small plates like bacon-wrapped dates stuffed with manchego and blue cheese. Also find a raw bar plus spinach gnocchi with buttered squash and brown butter and lollipop lamb chops, in addition to an extensive wine list and housemade cocktails. L, D

(daily). www.tredicinenoteca.com. 114 S. 13th St., 267.928.2092. Map 1, I5

Northern Liberties & Fishtown

CAKE LIFE BAKE SHOP—Bakery. The duo behind this all-day cafe has a "Cupcake Wars" victory under their belts. In addition to top-notch cupcakes, look for sweet and savory pastries and cakes (by the slice). B, L (Tu-Su), D (Tu-Sa). www.cakelifebakeshop.com. 1306 Frankford Ave., 215.278.2580. \$

FRANKFORD HALL—German. This open-air German beer garden may be the liveliest spot in Stephen Starr's empire. Counter service, long communal tables and alfresco ping-pong create a down-to-earth backdrop for enjoying huge steins of traditional German and craft beers. Fill up on casual fare like sauerkraut, schnitzel, spaetzle, bratwurst, weisswurst and käsekrainer. L (Sa-Su), D (daily). www.frankfordhall.com. 1210 Frankford Ave., 215.634.3338. \$ Map 1, L1

LITTLE BABY'S ICE CREAM—Sweets. Look no further for locally made ice cream. This unconventional shop offers imaginative flavors like pizza (yup, pizza ice cream) and Red Hot cinnamon, as well as vegan options. Check website for all locations. L, D (daily). www.littlebabysicecream.com. 2311 Frankford Ave., 267.687.8567. \$

PIZZA BRAIN—Pizza. This socially and environmentally aware pizza shop also houses the world's first pizza museum and claims the Guinness Book of World Records distinction for having the largest stock of pizza memorabilia. The restaurant also features vegan options and delivery. L, D (daily). www.pizzabrain.org. 2313 Frankford Ave., 215.291.2965. \$

Old City

CITY TAVERN—American. At this reconstructed tavern used by delegates to the First and Second Continental Congresses, enjoy a Colonial-style meal by acclaimed chef Walter Staib. Visitors are also welcome to walk through to take in the history. L, D (daily). www.citytavern.com. 138 S. Second St. at Walnut, 215.413.1443. \$ Map 1, K5

FEZZIWIG'S SWEET SHOPPE—American. This charming eatery located near all the sites combines an old-fashioned ice cream parlor/sweet shop with a classic soda fountain and a modern cafe. In addition to delectable desserts and pastries, find savory treats including burgers, cheesesteaks and hand-cut fries. B, L, D (daily). www.fezziwigsphiladelphia.com. 267.457.3608. Map 2, D4

FORK—American. One of Old City's original restaurant pioneers, Fork offers simple elegance with an open kitchen. Menu changes often. D (daily), Br (Su). www.forkrestaurant.com. 306 Market St., 215.625.9425. \$\$\$ Map 1, K5

JOLLY'S DUELING PIANO BAR—American. Founded by Jolly Weldon, this rollicking piano bar features, yes, two instruments with pianists duking it out with musical selections from rock, pop and more. Pizzas provide sustenance for all-night singalongs with craft beers and specialty cocktails fueling the fun. D (daily). www.jollysduelingpiano.com. 215.238.1333. \$ Map 2, E6

THE OLDE BAR—Seafood. This Jose Garces spot respects tradition with seafood and standouts like lobster roll and Olde Bar fries with crab, lobster butter and oyster stout-cheddar fondue. D (daily).



WIN A TRIP TO SCOTTSDALE

ENTER TO WIN A 3-DAY/2-NIGHT WEEKEND SUMMER GETAWAY IN BEAUTIFUL PARADISE VALLEY, ARIZONA. THE PACKAGE INCLUDES:

- › Domestic roundtrip airfare for two
- › Luxury accommodations at the historic Hermosa Inn
- › \$100 dining credit at LON's at the Hermosa plus brunch for two
- › A hot air balloon excursion with Rainbow Ryders
- › Dinner at Old Town Tortilla Factory in Old Town Scottsdale



Enter daily through May 31st, 2018 at wheretraveler.com/contest

ARIZONA
THE GRAND CANYON STATE

wheretraveler.com



www.theoldebar.com. 125 Walnut St., 215.253.3777. \$5 Map 3, K5

RED OWL TAVERN—American. Everything from pickling vegetables to smoking meats happens in-house at Red Owl, and diners reap the benefits in dishes like pickled deviled eggs, bouillabaisse, short-ribs, and coconut-curry mussels. The bar program is top shelf, featuring classic cocktails and American wines. B, L (M-F), D (daily), Br (Sa-Su). www.redowltaVERN.com. 433 Chestnut St., 215.923.2267. \$5 Map 1, K5

ROYAL BOUCHERIE—French. “Top Chef” winner Nicholas Elmi’s highly anticipated butchery fits right in with Old City’s historical vibe. The cozy two-level space features two bars (one for drinks and the other for oysters) with exposed brick walls, a tin ceiling and antique furnishings. But the mood is anything but dusty. Diners of all generations dig into hearty dishes like seared duck breast and steak au poivre in stick-to-your-ribs portions, while a feel-good soundtrack veers from Ella Fitzgerald to Stevie Wonder and Arcade Fire. Cocktail connoisseurs find classics and contemporary choices, while oenophiles look to a Euro-heavy list. D (daily). www.royalboucherie.com. 52 S. Second St., 267.606.6313. \$\$\$ Map 1, K5

ZAHAV—Middle Eastern. At his heralded restaurant perched above the street, James Beard Award-winning chef Michael Solomonov carefully prepares creative, contemporary Israeli food. A well-edited à la carte menu highlights small plates and salatin—a colorful collection of cold salads that traditionally start meals in Israel. The “Tayim” tasting option offers a good base for those new to the cuisine and includes Solomonov’s famous hummus (we like the Turkish variety, which is served warm in its own mini cast-iron pan) and feather-light laffa bread. Heftier fare include coal-fired kebabs and a crowd-pleasing braised lamb shoulder. Inventive cocktails; wine list with Israeli varietals. Reservations recommended. D (daily). www.zahavrestaurant.com. 237 Saint James Place, 215.625.8800. \$\$\$ Map 1, K6

Parkway District & Fairmount

THE BELGIAN CAFE—Belgian. At this pub, the rustic and understated interior betrays the ambitious menu, which offers an impressive selection of fresh PEI mussels and innovative vegan versions of favorites, including vegan barbecue wings and Korean-style barbecue seitan tacos. As for the brews, expect a dozen rare Belgian beers on tap and about 100 by the bottle. L (M-F), D (daily), Br (Sa-Su). www.thebelgiancafe.com. 601 N. 21st St., 215.235.3500 \$5 Map F2

CHERRY STREET TAVERN—Pub/Bar. A neighborhood constant since the early 1900s, everyone feels like a local at this warm, wood-paneled tavern just a short stroll from the Benjamin Franklin Parkway and museum district. The hot roast beef sandwich with provolone cheese is a winner. L, D (daily). www.cherrystavern.com. 129 N. 22nd St., 215.561.5683. \$ Map 1, F4

LA CALACA FELIZ—Mexican. Bright murals adorn this cheery mod-Mex spot headed by Chef Timothy Spinner. With over 50 varieties of tequila and an extensive margarita menu, the adventurous imbiber will likely never get bored, especially with the added benefit of ingredients like moonshine and chili powder. D (daily), Br (Sa-Su). www.lacalacafeliz.com. 2321 Fairmount Ave., 215.787.9930. \$5 Map 1, F2

#teetime

GENO'S STEAKS

GENO'S GEAR

RIGHT ACROSS THE STREET AT 9TH & PASSYUNK

GENO'S STEAKS

VIETNAM RESTAURANT Est. 1984

The Fine Art of Vietnamese Home Cooking

Vietnam Restaurant
221 North 11th St.
Phila., PA 19107
215-592-1183

Vietnam Cafe
616 South 47th St.
Phila., PA 19143
215-792-9286

Mon-Fri: 11:30 am - 8 pm
Fri: 11:30 am - 2:33 pm
Sat: 12 - 8:30 pm
Sun: 12 - 9 pm

PH-Bud: 11 am - 10:30 pm
Sun-Thurs: 11 am - 9:30 pm

www.eatatvietnam.com
Delivery available through tryvietnam.com

Instagram, Facebook icons

IM festive CELEBRATING 100+ YEARS OF THE ITALIAN MARKET

THE SOUTH 9TH STREET MARKET FESTIVAL

ItalianMarketFestival.com

MAY 19-20, 2018 · 11am - 6pm

South 9th Street, Federal - Fitzwater

PHILADELPHIA



Where Tradition Meets Invention

Authentic Indian Cuisine, Craft Cocktails & Contemporary Atmosphere

Lunch: 11:30 AM - 2:30 PM
Dinner: 5:00 PM - 10:00 PM

Happy Hour
Mon - Fri: 5:00 PM - 7:00 PM
Sat - Sun: 6:00 PM - 8:00 PM

1920 Chestnut St.
Philadelphia, PA 19103
267-519-2001

www.vedaphilly.com

Veda logo

LUCKY GOAT COFFEE HOUSE—Coffee House. Tucked away in Fairmount is this family-owned neighborhood gem, where coffee lovers can enjoy inventive seasonal drinks (made with La Columbe coffee) and baked goods served with delicious homemade cream cheese. Sit and sip in this intimate shop, people watch, and snap pics of their Insta-worthy latte art. B, L, D (daily). www.luckygoatcoffeehouse.com. 888 N. 26th St., 215.978.4628. \$ Map 1, E2

SKYBRUNCH AT THE VISTA ROOM—American. Sunday brunch at this dining room located 50 stories above ground is served with panoramic views of the Benjamin Franklin Parkway and beyond. Explore six curated food stations for a flat fee and enjoy delicious themed cocktails. B, Br (Su). www.skybrunch.com. Top of the Tower, 1717 Arch St., 215.557.1999. \$\$\$ Map 1, G4

SOUTH—American. Diners here choose to dine in one of three distinct areas: an elegant dining hall, a convivial bar/lounge and a lively jazz parlor hosting top acts six nights a week. As the name suggests, the menu tips its hat to the American South, but with modern flair in dishes like Cajun shrimp deviled eggs, fried lobster and grits, and a veggie jamabalaya. D (Tu-Su). www.southrestaurant.net. 600 N. Broad St., 215.600.0220. \$\$\$ Map 1, H2

Penn's Landing & Waterfront

CHART HOUSE—Seafood. Waterfront views of Penn's Landing, the Delaware River and the Philadelphia skyline set a dramatic stage for updated classic steaks and seafood entrées, along with renowned prime rib specials. D (daily), Br (Su). www.chart-house.com. 555 S. Columbus Blvd., 215.625.8383. \$\$\$ Map 1, L7

KEATING'S ROPE & ANCHOR, BAR + KITCHEN—Contemporary American. Spend an afternoon on the patio of Hilton's Penn's Landing outpost, tucking into oak-smoked salmon or a New York strip steak while gazing out at the Delaware River. Inside, a buzzy bar pours handcrafted cocktails to the tunes of a live band. B, L, D (daily). www.rope-and-anchorbar.com. 201 S. Columbus Blvd., 215.521.6509. \$\$\$ Map 1, L5

LA PEG—French. This contemporary brasserie and beer garden is located inside the FringeArts building along the Delaware River Waterfront. The crowd-pleasing menu features dishes like raw oysters, country fried quail, butternut squash soup and cheeseburgers. D (daily), Br (Sa-Su). www.lapegbrasserie.com. 140 N. Columbus Blvd., 215.375.7744. \$\$\$ Map 1, L4

MOSHULU—American. This four-masted ship was gloriously transformed into a riverside dining destination with wonderful food, attentive service and stunning views. Private party accommodations available. D (daily), Br (Su). www.moshulu.com. 401 S. Columbus Blvd., 215.923.2500. \$\$\$ Map 1, L6

South Philly & Italian Market

AMERICAN SARDINE BAR—Pub/Bar. From the owners of the South Philly Tap Room comes this fun spot, a resto-bar with a menu focusing on a selection of craft beers (16 on tap), hearty sandwiches and yummy pub grub. L, D (daily) Br (Su). www.americansardinebar.com. 1800 Federal St., 215.334.2337. \$

FEDERAL DONUTS—Sweets. James Beard Award-winner Michael Solomonov's little gem offers fresh cake doughnuts at 7 am, and then serves Korean-style fried chicken from noon until they run out. B, L (daily). www.federaldonuts.com. 1219 Second St., 267.687.8258. \$ 1632 Sansom St., 215.665.1101. Map 1, H5

GENO'S STEAKS—Cheesesteaks. Geno's serves up classic steaks with Philly flair. The inevitable line provides time to figure out what to order; when you get to the counter, make it fast and simple. Cash only. B, L, D (Daily, 24 hrs.). www.genossteaks.com. 1219 S. Ninth St., 215.389.0659. \$

GREEN EGGS CAFE—American. This restaurant with two locations is a favorite for mouth-watering breakfast and lunch dishes like smoked Atlantic salmon omelet, Belgian waffles and a variety of sandwiches and salads. Cash only. B, L, Br (Daily). www.greeneggscafe.net. 212 S. 13th St., 267.861.0314. \$ Map 1, H5; 1306 Dickinson St., 215.266.3447; 719 N. Second St., 215.922.3447.

JIM'S SOUTH STREET—Cheesesteaks. Since 1976, visitors and locals alike have been flocking to this temple to cheesesteak inside an Art Deco storefront on lively South Street. Hoagies, too. L, D (Daily). www.jimssouthstreet.com. 400 South St., 215.928.1911. \$ Map 1, K7

NINA'S TRATTORIA—Contemporary Italian. This supper club inside the Italian Market serves Sicilian family specialties, along with traditional and contemporary fare from regions including Abruzzo, Calabria and Tuscany. The feather-light gnocchi are among many must-tries on the menu. L (Sa-Su), D (Tu-Su). www.ninatrattoria.com. 910 S. 9th St., 215.574.9995. \$5 Map 1, J8

PAT'S KING OF STEAKS—Cheesesteaks. Billed as the originator of the cheesesteak, this shop is a favorite that attracts fans from around the world. Local tip: Order “Whiz wit.” B, L, D (Daily, 24 hrs.). www.patskingofsteaks.com. 1237 E. Passyunk Ave., 215.468.1546. \$

SOUTH PHILADELPHIA TAP ROOM—Pub/Bar. This casual establishment appeals to both professionals and the bohemian/hipster crowd. Known for an outstanding beer selection from around the globe, the “Tap Room” also serves a range of homestyle appetizers, sandwiches, salads, burgers, and comfort food entrées. L, D (daily), Br (Sa-Su). www.southphiladelphiataproom.com. 1509 Mifflin St., 215.271.SPTR.

SABRINA'S CAFE—American. Cozy up in one of three locations of this family-owned neighborhood cafe, heralded for having one of the best brunches in town. BYOB. Hours vary by location. www.sabrinascfe.com. 910-912 Christian St., 215.574.1599. Map 1, J8; Art Museum, 1804 Callowhill St., 215.636.9061. Map 1, G3; University City, 34th & Powelton streets, 215.222.1022. \$5

South Street & Queen Village

BRAUHAUS SCHMITZ—German. This Philly original claims the largest selection of German beer in the city with 20 on draft and more than 80 bottles from 25 countries. Executive Chef Jeremy Nolen prepares classic German fare like house-made bratwurst, schweinshaxen and schnitzel. L, D (Daily). www.brauhauschmitz.com. 718 South St., 267.909.8814. \$-\$\$ Map 1, J7

BISTROT LA MINETTE—French. Chef/owner Peter Woolsey has created an authentic French bistro that reflects his passion for detail—even the original art and furnishings evoke the flavor of France’s celebrated culinary regions. D (daily), L, Br (Sa, Su) www.bistrotaminette.com. 623 S. Sixth St., 215.925.8000. \$\$ Map 1, J7

DEVIL’S DEN—Tavern. This South Philly beer bar consistently attracts neighborhood patrons for its selection of craft and imported beers—17 on tap and 200 by the bottle. Food trends toward gastropub fare; try dishes like duck fries, duck buns, and a beer-battered fish sandwich. If you’re into mussels, this den serves them with five different preparations. L, D (daily), Br (Sa-Su). www.devilsdenphilly.com. 1148 S. 11th St., 215.339.0855. \$\$ Map 3, D1

ELA—American. The kitchen at this bar and restaurant is run by Chef Jason Cichonski and features an inventive, rotating menu, an extensive wine and beer program and an inspired cocktail list. The modern yet rustic setting allows diners a comfortable place to enjoy seriously good food. D (daily), Br (Su). www.elaphilly.com. 627 S. 3rd St., 267.687.8512. \$\$ Map 1, K7

LAS BUGAMBILIAS—Mexican. At this intimate, authentic Mexican restaurant, chef/owner Carlos Molina offers high-quality, freshly prepared food from three different regions in Mexico. Be sure to sample the imaginative array of margaritas and the homemade desserts. L (Tu-Su), D (daily). www.lasbugambiliaphilly.com. 148 South St., 215.922.3190. \$\$ Map 1, L7

THE TWISTED TAIL—American. This lively bourbon-and-blues emporium features a menu of charcoal-grilled fare, 40+ bourbons and plenty of craft beer. Dine at rustic wooden table indoors or out, then climb up the stairs for some rockin’ live music. L (M-F), D (daily), Br (Sa-Su). www.thetwistedtail.com. 509 S. 2nd St., 215.558.2471. \$\$ Map 1, K6

MARRAKESH—Moroccan. For more than three decades, this South Street-area destination has served authentic feasts. Seven-course tasting menu, \$25 per person. Private dining and belly dancers available Su-Th on request and regularly F-Sa. D (daily). www.marrakesheastcoast.com. 517 S. Leithgow St., 215.925.5929. \$\$ Map 1, K7

WHETSTONE TAVERN—American. At this well-regarded neighborhood spot, Chef Jeremy Nolen crafts dishes with a modern touch. The menu features familiar and approachable fare with a focus on simple preparations and fresh ingredients from local farms and producers when possible. D (daily). www.whetstonetavern.com. 700 S. 5th St., 267.909.8814. \$\$ Map 1, J7

University City

BOBBY’S BURGER PALACE—American. Bobby Flay’s extraordinary burger joint. Stellar burgers are the specialty and they aren’t pricey either. Step into the fresh space for something gourmet and check out the burger of the month. L, D (daily). www.bobbysburgerpalace.com. 3925 Walnut St., 215.387.0378. \$ Map 1, B5

CITY TAP HOUSE—American. Located on the balcony of The Radian, City Tap House boasts 60 draft beers, including rare and sought-after craft brews. Chef Al Paris offers new American pub fare including “Daily Supper” specials. Dine on the terrace, or have a cocktail around one of five stone fire pits overlooking Walnut Street. L, D (daily),

READING TERMINAL MARKET 12th & Arch Streets Philadelphia, PA 19107
1872 **125 YEARS** 2018

SHOP LOCAL
A PHILADELPHIA TRADITION

Discover the diversity of fresh and prepared foods available at the Market. From Amish made breakfasts to international cuisines- we've got something for everyone's appetite.

Diverse. Charming. Inspiring. Delicious.
Shop Reading Terminal Market. All under one roof.

Open Every Day from 8 AM - 6 PM
215-922-2317 • ReadingTerminalMarket.org

f i t RdgTerminalMkt #LoveRTM #RTMcook

Specializing in California-style burritos featuring fresh ingredients in sumptuous portions at affordable prices.

Lunch and Dinner
BYOB

el fuego

723 Walnut Street • 215.592.1931
Facebook.com/elfuegoburritosphilly
www.elfuegophilly.com

THIS IS HOW IT'S DONE



Jim's South St.
PHILADELPHIA
STEAKS & HOAGIES

215.928.1911 • 4TH & SOUTH ST. • PHILADELPHIA • JIMSSOUTHSTREET.COM

JIMSSOUTHSTREET @JIMSSOUTHSTREET #JIMSSOUTHSTREET

OPEN EVERY DAY 'TIL LATE

Erawan
THAI CUISINE

Celebrate
Mother's Day with us
The First Thai Restaurant in Philadelphia
BYOB

3 COURSE LUNCH & DINNER SPECIALS AVAILABLE
Dine in • Take out • Closed Monday
Free Delivery (Limited Area)
Order online, special promotions and make reservation online

123 S. 23rd Street
215.567.2542
See our website for special promotions:
www.erawanphilly.com

Here today.
where tomorrow.

Before you travel,
go to wheretraveler.com
and see where to shop, dine
and play once you arrive.

wheretraveler.com
Info only locals know!

wheretraveler.com

Br (Sa-Su). www.citytaphouse.com. 3925 Walnut St., 215.662.0105. \$\$ Map 1, C5; 2 Logan Square, 215.587.9040.

COZARA—Japanese. Chef Zama Tanaka’s bi-level Japanese pub, situated in Chestnut Square Plaza just a block from the Chestnut Street Bridge, features tapas-style small plates with a focus on yakitori. You won’t find sushi here, but just about everything else you can imagine, including a whole chicken yakitori served with yakitori sauce and honey mustard miso, is on their extensive menu. www.cozaraphilly.com. 3200 Chestnut St., 267.233.7488. \$\$\$ Map 1, D5

DISTRITO—Mexican. From Philly’s acclaimed chef and restaurateur, Jose Garces, comes this high-energy spot with a menu of fresh interpretations of classics inspired by the spirited culture and cuisine of Mexico City. L, D (daily). www.distritorestant.com. 3945 Chestnut St., 215.222.1657. \$\$ Map 1, C5

MARIGOLD KITCHEN—American. Located inside a traditional Victorian row house, this restaurant features the culinary alchemy of Andrew Kochan and Tim Lanza. Each build tasting menu is meant to “surprise,” with dishes drawing from the seasons that are as beautiful to look at as they are tasty to eat. BYOB. D (Tu-Sa). www.marigoldkitchenbyob.com. 501 S. 45th St., 215.222.3699. \$\$\$ Map 1, A7

VIETNAM CAFÉ—Vietnamese. With this small but sleek outpost of Chinatown’s popular Vietnam Restaurant, owner Benny Lai has brought his beloved Vietnamese cuisine to the University City neighborhood. Expect savory noodle soups and dishes, seafood, rice platters and the chef’s special barbecued appetizer sampler. L, D (daily). www.eatvietnam.com. 816 S. 47th St., 215.729.0260. \$\$

WHITE DOG CAFE—American. This homey, antiques-filled dining room is as well known for its food as it is for its social activism. Dine on classic dishes made from locally grown and organic ingredients, like chicken liver mousse, soups and sandwiches, and omelets made with cage-free eggs. L (M-F), D (daily), Br (Sa-Su). www.whitedog.com. 3420 Sansom St., 215.386.9224. \$-\$\$ Map 1, D5

Washington Square

EL FUEGO—Mexican. This happening spot whips up tasty “California-style” burritos, along with tacos, quesadillas and soups. The lunch hour is particularly lively, so get there early. L (daily), D (M-F). www.elfuegoburritos.com. 723 Walnut St., 215.592.1931. \$ Map 1, J5

GARCES TRADING COMPANY—American. Philadelphia’s prolific Iron Chef, Jose Garces, delivers gourmet goods at his market, bakery, barista bar and cafe. One of the best features may be the curated wine, beer and spirits available inside the market. L (M-F), D (daily), Br (Sa-Su). www.garcestadingcompany.com. 1111 Locust St., 215.574.1099. \$\$ Map 1, I6

MORIMOTO—Japanese. This stunning brainchild of Iron Chef Masaharu Morimoto and restaurant guru Stephen Starr features inventive Japanese cuisine and the freshest sushi on the block. The chef’s prix-fixe menu is particularly noteworthy. Reservations recommended. L (M-F), D (daily). www.morimotorestaurant.com. 723 Chestnut St., 215.413.9070. \$\$\$\$ Map 1, J5



RISTORANTE LA BUCA—Italian. This romantic spot near Washington Square Park exudes Old World charm with specials like fresh seafood, brought to diners on a cart before preparation. L (M-F), D (M-Sa), L (M-F), D (M-Sa). www.ristlabuca.com. 711 Locust St., 215.928.0556. \$\$\$ Map 1, J6

TALULA'S GARDEN—American. With a varied garden-to-table menu and extensive wine list, Talula's offers adventurous eaters delicious options like marinated halibut and oxtail stuffed artichoke barigoule with sea beans and saffron. Snag a seat in the charming outdoor garden in good weather. D (daily), Br (Su). www.talulasgarden.com. 210 W. Washington Square, 215.592.7787. \$\$\$-\$\$\$ Map 1, J6

Washington Square West

AMIS—Italian. At this convivial trattoria (one of three Philadelphia eateries by celebrated Chef Marc Vetri), dig into tapas-style fare like short ribs with hot peppers, pork chop with parmesan and grilled shrimp with chilies and cucumber. D (daily), Br (Su). www.amisphilly.com. 412 S. 13th St., 215.732.2647. \$\$\$ Map 1, I6

BUD AND MARILYN'S—American. Head toward the neon sign on 13th & Locust to this mid-century joint that's garnered plenty of buzz. In "Mad Men"-style environs, tuck into upgraded retro classics including fried chicken with house-made hot sauce and short rib stroganoff. On Sundays, groups and diners with kids in tow dig into the "Meat-and-Three," a family-style dinner with all the fixings—biscuits and jam, farm-fresh salads and sides. D (daily). www.budandmarilyns.com. 1234 Locust St., 215.546.2220. Map 1, I6

CRAFTSMAN ROW SALOON—American. Located along historic Jeweler's Row, Craftsman Row Saloon is an American-style restaurant from the owners of Opa. At this spot, find classics with a twist, like juicy burgers topped with mac and cheese or sausage gravy, plus local beers and spiked milkshakes. www.craftsmanrowsaloon.com. 112 S. 8th St., 215.923.0123. \$\$\$ Map 1, J5

GIORGIO ON PINE—Italian. Savor traditional Italian delicacies at this surprisingly celiac-friendly Antique Row destination. BYOB. L, D (daily). giorgiopineline.com. 1328 Pine St., 215.545.6265. \$\$\$ Map 1, I6

LITTLE SPOON CAFE—Coffee House. Locals and visitors alike flock to this cheery brunch spot known for its adorable kitschy decor. Their stellar brunch menu includes lemon ricotta pancakes, bacon grilled cheese and a crowd-pleasing Monte Cristo sandwich made with honey ham, smoked gouda, a fried egg and jalapeno mayo. B, L (daily), Br (Sa-Su). www.littlespooncafe.com. 1500 South St., 267.587.6559. \$ Map 1, H7

VEDGE—Vegan. Husband-and-wife team Rich Landau and Kate Jacoby give vegan cuisine a good name at their inventive, modern bistro inside a handsome row house. In the chef's deft hands, roots and leaves become the stuff of haute cuisine in dishes like "campfire gold potatoes" with black garlic tahina and baby shiitake mushrooms. Cocktails with house-made syrups and bitters are also musts. Reservations required. D (M-Sa). www.vedgerestaurant.com. 1221 Locust St., 215.320.7500. \$\$\$ Map 1, I6

who: you
what: this cheesesteak
where: 9th + Passyunk
when: now
why: really?



GENO'S STEAKS
PHILADELPHIA ORIGINAL

where® you are.
(and where you're going.)

All the latest buzz about the city
from the experts at Where Magazine.
Shopping, dining, attractions, it's all here 24/7.

wheretraveler.com



Entertainment | May



Stratus Rooftop Lounge

This sophisticated bar perched at the top of The Kimpton Hotel Monaco near Old City is one of only a few rooftop lounges in Philadelphia. As such, when the weather warms up, it turns into a popular destination for quality cocktails with a dash of history. Sip on drinks with "Alice in Wonderland" themes, like "Off With Their

Heads" made with rose petal-infused vodka and prosecco. When breezes turn chilly, warm up by a 30-foot-long fireplace, while gazing out at iconic sites like Independence Hall, Washington Square, the Liberty Bell Visitor Center and the Philadelphia skyline. www.stratuslounge.com. 433 Chestnut St., 215.925.2889. Map 1, K5



Conshohocken Brewing Company

This Main Line brewpub pours suds from head brewer Andrew Horne, a Philly native who learned his trade at spots like Yards, Avery and Breakside. Grab a pint of the Cascadian Dark Ale and munch on affordable, yet tasty bar snacks. www.conshohockenbrewing.com. 739 E Elm St., 610.897.8962.

Arcades & Billiards

ARNOLD'S FAMILY FUN CENTER—One of the largest indoor fun centers in the United States features electric go-karts, bumper cars, crazy cars, a bounce zone, laser tag, black-light mini golf and bowling lanes. Cafe, bistro and bar. Hours vary by season. www.arnoldffcc.com. 2200 West Drive, Oaks, Pa., 610.666.0600.

BARCADE—As the name suggests, this cavernous space in Fishtown ingeniously combines a bar with an arcade, serving a stellar selection of craft beer to lovers of old-school games like Donkey Kong, Ms. Pacman and Space Invaders, which are all just \$.25 a game. Must be 21 or older to enter. M-Su noon-2 am. www.barcadephiladelphia.com. 1114 Frankford Ave., 215.634.4400.

BUFFALO BILLIARDS—Kick back at this casual Old City spot and enjoy happy hour specials as you chill out in one of the leather banquettes. For relaxation with a competitive edge, shoot pool at one of eight tables or choose from darts, shuffle board, skee-ball or foosball. M-F 4 pm-2 am, Sa-Su 2 pm-2 am. www.buffalobilliards.com. 118 Chestnut St., 215.574.7665. Map 1, K5

DAVE & BUSTER'S—Popular with kids and grown-ups alike, this lively spot has more than 200 interactive and video games, plus several HD televisions. Whether you stop by for happy hour and billiards or stay to game all night, this mega-arcade is sure to bring the fun. Su-Th 11:30 am-midnight, F-Sa 11:30 am-2 am. www.daveandbusters.com.

325 N. Columbus Blvd., 215.413.1951.
Map 1, L3; 1995 Franklin Mills Circle,
215.632.0333

Bars & Lounges

BARBARY—Dance the night away with great DJs, cheap drinks and disco lights, or take a break from all the action in the bar's cozy photo booth. Daily 10 pm-2 am. www.thebarbary.org. 951 Frankford Ave., 215.634.7400. Map 1, L1

THE BARDS—A purist's Irish pub that encourages sipping pints of Guinness and shots of Tullamore Dew, this Center City tavern makes an ideal spot for winding down at the end of the day. M-F noon-2 am, Sa-Su 10 am-2 am. www.bardsirishbar.com. 2013 Walnut St., 215.569.9585. Map 1, G5

THE GASLIGHT—This casual, comfortable bar and restaurant is located in Philadelphia's historic district, serving a sophisticated take on pub grub. Look for happy hour specials during the week and a tasty brunch (and live entertainment) on weekends. Extensive beer list. M-Th 5 pm-midnight, F 5 pm-2 am, Sa 11-2 am, Su 11 am-midnight. www.thegaslightphilly.com. 120 Market St., 215.925.7691. \$\$\$ Map 1, K5

GRAFFITI BAR—True to its name, this fun-loving covered patio features the spray-paint art of local Philadelphians. Located behind the stylish Asian-fusion restaurant, Sampan, it also serves the same acclaimed food. Get there by slipping down the graffitied side alley. M-Tu 4 pm-10 pm, W-Th 4 pm-

There's a lot more going on this May. Visit us online: wheretraveler.com

11 pm, F-Sa 4 pm-midnight, Su 4 pm-9 pm. www.sampanphilly.com. 124 S. 13th St., 215.732.3501. Map 1, I5

HOWL AT THE MOON—The talented staff at this dueling piano bar perform crowd favorites from the '70s to today and take requests, keeping the crowd dancing and singing along all night. Try one of the signature cocktails or a "bucket of booze," which serves four or more people. M-W 7 pm-2 am, Th 6 pm-2 am, F-Sa 5 pm-2 am. www.howlatthemoon.com. 258 S. 15th St., 215.546.4695. Map 1, H6

KITE & KEY—This lively gastropub in the Fairmount neighborhood pours a dozen, mostly local, brews for a crowd of young professionals. Service here is fast and friendly. Daily 11 am-2 am. www.thekiteandkey.com. 1836 Callowhill St., 215.568.1818. Map 1, G3

LONDON GRILL—London Grill is a Fairmount institution, located steps from historic Eastern State Penitentiary. For years, its dark wood bar has hosted locals looking for sophisticated bar fare. Look for events, like weekly quiz nights. M 4 pm-2 am, Tu-F 11 am-2 am, Sa-Su 10 am-2 am. www.londongrill.com. 2301 Fairmount Ave., 215.978.4545. Map 1, F2

MILKBOY—These popular bars double as live music venues, featuring both local and nationally recognized performers. Each location boasts a signature roll-up garage-style window, weekday morning cocktails and delicious American food. It's free to hang out, but shows are usually ticketed. M-F

(FROM LEFT) COURTESY STRATUS ROOFTOP LOUNGE; ©MONTGOMERY COUNTY PLANNING COMMISSION/FLICKR; CREATIVE COMMONS

➔ **FUN LOVERS** Can't get enough after-hours excitement? For more bars, clubs, live music shows and theater, visit www.wheretraveler.com/Philadelphia.



7 am-2 am, Sa-Su 11 am-2 am. www.milkboyp Philly.com. 1100 Chestnut St., 215.925.6455. \$\$. Map 1, 15

MONK'S—For more than 20 years, this Center City spot has been earning raves throughout Philadelphia for its top selection of beer and a tasty food menu to boot. Located just off Spruce Street, Monk's occasionally gets limited distribution kegs shipped in from the farthest reaches of the country. Daily 11:30 am-2 am. www.monkscafe.com. 264 S. 16th St., 215.545.7005. Map 1, H6

PHILADELPHIA DISTILLING—This modern warehouse in hip Northern Liberties makes a stunning setting not only for sampling spirits, but also for watching the distilling process. Hand-hammered copper stills and wooden fermentation vessels form the crux of the process here, one that dates back to 1854. Retail: Th-Su noon-11 pm. Bar: Th-F 4-11 pm, Sa-Su 1-11 pm. Tours/tasting: Th, F 6 pm; Sa-Su 2, 4 and 6 pm (book online). www.philadelphiadistilling.com. 25 E. Allen St., 215.671.0346.

THE RANSTEAD ROOM—Hidden off a side street adjacent to restaurant El Rey, this dimly lit enclave serves libations minted at the turn of the century in true speakeasy style. Look for the "RR" on the door. Daily 6 pm-2 am. 2013 Ranstead St., 215.563.3330. Map 1, G5

STANDARD TAP—This old school two-story bar, built by a former Sam Adams brewmaster, has all the cozy pub charm with the full menu of a proper restaurant. A rotating roster of 20 locally produced beers and chalkboards dispersed throughout display the daily creations of Chef Carolynn Angle, whose repertoire includes terrines, wild game entrees and decadent desserts. M-F 4 pm-2 am, Sa-Su 11 am-2 am. www.standardtap.com. 901 N. Second St., 215.238.0630. Map 1, K1

TIKI—Hang 10 at this fun bar channeling Polynesian tiki and California surf rock. With two levels, there's plenty of space to chill, from the bar and open kitchen on the ground floor to the roof deck. M-Sa 5 pm-2 am, Su 1 pm-11 pm. www.tikiphilly.com. 102 S. 13th St. Philadelphia, Pa. 19107, 215.309.3435. Map 1, H5

THE TRESTLE INN—Enjoy a night of classic cocktails, 60 domestic and international whiskeys and retro bar snacks. Then maybe strut your stuff with go-go dancers, who shake it to everything from soul and funk to classic disco. Events throughout the week include Spirit of Wednesday, where patrons partake in complimentary tastings and drink specials. W-Th 5 pm-1 am, F-Sa 5 pm-2 am. www.thetrestleinn.com. 339 N. 11th St., 267.239.0290. Map 1, I3

THE VICTORIA FREEHOUSE—This authentic British pub brings London to Philly with craft beers, ciders and cask ales imported from the UK. Pair your pint with traditional pub favorites like bangers and mash and sticky toffee pudding. M-Sa noon-midnight, Su noon-4 pm. www.victoriafreehouse.com. 10 S. Front St., 215.543.6089. Map 1, J5

VINTAGE—This gorgeous Midtown Village wine bar has an impressive list of reds, whites and everything in between. It's vino without the pretension. M-F 4 pm-2 am, Sa-Su 11 am-2 am. www.vintage-philadelphia.com. 129 S. 13th St., 215.922.3095. Map 1, I5

THE SMASH HIT MUSICAL BASED ON THE SONGS OF ABBA
MAMMA MIA!

"MAMMA MIA! HAS AUDIENCES DANCING IN THE AISLES!"
—Associated Press

AN ALL-NEW PRODUCTION OF THE WORLD'S FAVORITE FEEL-GOOD MUSICAL!

NOW - JULY 15

FOR TICKETS VISIT: WalnutStreetTheatre.org ticketmaster.com
OR CALL: 215-574-3550 or 800-982-2787

AMERICA'S OLDEST THEATRE - PHILADELPHIA'S MOST POPULAR THEATRE COMPANY
WALNUT STREET THEATRE
1012 Walnut Street • Visit us at WalnutStreetTheatre.org

SPONSORED BY: AIG, Scully, 10, metro, 1001, more

Where do you want to go?

Find the best of the city

wheretraveler.com

DISCOVER THE EXCITEMENT OF ARENA FOOTBALL WITH PHILLY'S BACK-2-BACK CHAMPIONS!

TICKETS START AS LOW AS \$15

JOIN US IN MAY!
SATURDAY, MAY 19TH AT 6PM VS. ALBANY EMPIRE

FOR TICKETS: VISIT THE WELLS FARGO CENTER BOX OFFICE ON GAME DAYS OR FOR DISCOUNTED TICKETS VISIT PHILADELPHIASOUL.COM/WHRE
888-789-SOUL
TICKETS@PHILADELPHIASOUL.COM



Casinos

PARX CASINO—Located about 20 miles north of Center City by way of I-95 or the PA Turnpike, Parx is worth the trip. This 150,000-sq.-ft. venue boasts 3,330 slot machines, 132 live table games, a 48-table poker room and a variety of restaurants and bars, plus thoroughbred horse racing at Parx Racing and a new 1,500-seat entertainment venue called Xcite Center. Complimentary parking. Daily 24 hours. www.parxcasino.com. 2999 Street Road, Bensalem, Pa., 888.588.7279. Map 4, C3

SUGARHOUSE CASINO—Wager on having a fantastic time at this 45,000-square-foot casino on the Delaware River waterfront in the Fishtown neighborhood. The huge gaming floor offers slots, as well as live table games such as craps, blackjack and poker. Onsite dining, free parking and valet available. Daily 24 hours. www.sugarhousecasino.com. 1001 N. Delaware Ave., 877.477.3715. Map 1, L1

Classical & Opera

OPERA PHILADELPHIA—Philly's premier opera company stages a full season of opulent productions. Not only does this company present classics with rich precision, but it also produces new and innovative operas. This month: "Carmen," **May 1-3**. www.operaphila.org. Academy of Music, Broad and Locust streets, 215.893.1999. Map 1, H6

PHILADELPHIA CHAMBER MUSIC SOCIETY—With a mission of making classical music accessible to a wide audience, the Chamber Music Society performs more than 60 concerts annually. Performances are regularly held in the intimate Perelman Theater at the Kimmel Center. This month: Musicians from Marlboro III, **May 1**; Nitzan Haroz and Gloria Kim, **May 6**; Paul Lewis, **May 10**; The Brahms Sextets, **May 11**; Calidore Quartet, **May 13**; Julia Bullock and John Arida, **May 15**. www.pcmsconcerts.org. Kimmel Center for the Performing Arts, 300 S. Broad Street, 215.569.8080. Map 1, H6

THE PHILLY POPS—Michael Krajewski leads one of America's premier pops orchestras through a repertoire of classical, swing, Broadway, blues and jazz. This month: Comcast NBC Universal Memorial Salute **May 26**. www.phillypops.org. Kimmel Center for the Performing Arts, 300 Broad St., 215.893.1999. Map 1, H6

Comedy

HELIUM COMEDY CLUB—Local talent and national headliners take the stage at this club, just off Rittenhouse Square. This month: Beth Stelling, **May 3-5**; Steve Hofsetzer, **May 10**; Joe Matarese, **May 11-12**; Ismo, **May 16**; Gary Owen, **May 18-20**; Donnell Rawlings, **May 24-27**; Tammy Pescatelli, **May 31**. www.heliumcomedy.com. 2031 Sanson St., 215.496.9001. Map 1, G5

PUNCH LINE PHILLY—A part of the thriving entertainment scene in Fishtown, this comedy club, restaurant and bar will send you laughing all the way home with new performances each week. The 300-seat venue features VIP seating and an outdoor patio. The bar offers local craft beers, cocktails and wines by the glass. This month: Ralph Harris, **May 3-5**; Ricky Velez, **May 10-11**; Carlos Mencia, **May 17-19**. www.punchlinephilly.com. 33 E. Laurel St., 215.606.6555.

Concert Venues

ELECTRIC FACTORY—Big-name and up-and-coming acts appear at this cavernous, mostly standing-room venue with a busy calendar. Ticket prices and show times vary. This month: Lord Huron, **May 1**; Greta Van Fleet, **May 12**; Sum 41, **May 14**; New Found Glory, **May 23**; Summerland, **May 31**. www.electricfactory.info. 421 N. Seventh St., 215.627.1332. Map 1, J3

THE FILLMORE PHILADELPHIA—Fishtown's legendary Ajax Metal Factory has been transformed into a state-of-the-art 2,500 capacity venue, honoring the traditions of historic Fillmore music halls and weaving in some Philly flavor. On the top floor, The Foundry serves as a smaller venue where local bands and DJs take the stage. This month: Camila Cabello, **May 1**; King Krule, **May 2**; Lake Street Dive, **May 12**; Flatbush Zombies, **May 22**; Apocalyptica Plays Metallica by Four

SUMMER ON THE Waterfront

OPENS MAY 11

The destination for every summer mood

DELAWARERIVERWATERFRONT.COM

Independence, UNIVEST, PECO, Coca-Cola, LEVEL NATION, VISIT PHILADELPHIA, Delaware River WATERFRONT Corporation



Cellos, **May 24**. www.thefillmorephilly.com. 29 E. Allen St., 215.309.0150. **Map 1, L1**

THEATRE OF THE LIVING ARTS (TLA)—This former movie house is now a two-story music venue featuring popular touring bands and a funky boho vibe. This month: *The Sword*, **May 1**; *Obituary*, **May 4**; *Blind Melon*, **May 5**; *Turnstile*, **May 6**; *Natalia Lafourcade*, **May 7**; *Jessie Ware*, **May 10**; *Emmure*, **May 11**; *The Fratellis*, **May 15**; *Editors*, **May 17**; *Miyavi*, **May 18**; *Nav*, **May 19**; *Ugly God*, **May 26**; *TECH N9NE*, **May 31**. www.inphilly.com. 334 South St., 215.922.1011. **Map 1, K7**

UNION TRANSFER—Originally built as a luggage terminal in the early 1900s, this mid-size music hall boasts towering arches, elegant chandeliers and stained glass for a dramatic yet intimate atmosphere. Separate bar area for the 21+ crowd. This month: *Charley Crockett*, **May 1**; *Billy Strings*, **May 2**; *Flat Worms*, **May 3**; *Carpenter Brut*, **May 4**; *Liza Anne*, **May 5**; *Panda Bear*, **May 6**; *Power Trip and Sheer Mag*, **May 7**; *Marian Hill*, **May 8**; *Trampled by Turtles*, **May 9**; *Tune-Yards*, **May 10**; *Shakey Graves*, **May 11**; *Goodnight/Goodluck*, **May 12**; *Frankie Cosmos*, **May 13**; *Wye Oak*, **May 14**; *The Kills*, **May 15**; *Courtney Barnett*, **May 17**; *Low Cut Connie*, **May 17**; *Bishop Briggs*, **May 18**; *Hop Along*, **May 19**; *Andrew W.K.*, **May 21**; *The Sidekicks*, **May 22**; *Maggie Rogers*, **May 24**; *Suuns*, **May 25**; *Laura Veirs*, **May 26**; *Pond*, **May 29**; *Parsonsfield*, **May 31**. www.utphilly.com. 1026 Spring Garden St., 215.232.2100. **Map 1, I2**

WELLS FARGO CENTER—The biggest names in music stop at this stadium arena and sports complex in South Philadelphia. Get there by car or take SEPTA's Broad Street subway line to AT&T Station. *Bon Jovi*, **May 3**. www.spectratix.com. 3601 S. Broad St., 215.336.3600/215.336.3600. **Map 4, B4**

Dance

PENNSYLVANIA BALLET—Established in 1963, this company is considered to be one of the premier ballet companies in the United States, bringing the best in classical performance to the Philadelphia stage. This month: *Jewels*, **May 12-13**; *Peter Pan*, **May 19-20**. www.paballet.org. Academy of Music, 240 South Broad Street, 215.893.1999. **Map 1, H6**

PHILADANCO—The Philadelphia Dance Company (Philadanco) is a non-profit organization that presents predominantly African-American traditions in dance while increasing dance appreciation in the area. This month: *Philadelpia School of Arts Dance Recital*, **May 27**. www.philadanco.org. Kimmel Center for the Performing Arts. Broad and Spruce streets, 215.893.1999. **Map 1, H6**

Gay & Lesbian Clubs

KNOCK RESTAURANT AND BAR—Known for its friendly scene and inspired cuisine, Knock draws a sophisticated gay clientele of all ages. A daily happy hour is served from 5pm-7pm. Daily 11 am-2 am. www.knockphilly.com. 225 S. 12th St., 215.925.1166. **Map 1, I6**

UBAR—With its large oval bar and mirrored walls, this a Gayborhood institution regularly draws a lively crowd. Relax with a no-frills brew and some juke box tunes. Daily 11 am-2 am. www.ubarphilly.com. 1220 Locust St., 215.546.6660. **Map 1, I6**

VOYEUR—Ladies and gents can get their groove on at this hot, after-hours nightclub in the heart of the Gayborhood. Open daily, check website for hours. www.voyeurnightclub.com. 1221 Saint James St., 215.735.5772. **Map 1, I6**

Gentlemen's Club

DELILAH'S—"America's #1 Gentlemen's Club" features "The World's Most Beautiful Showgirls." Find a complimentary after-work buffet, happy-hour specials and free cover with hotel room key or game day ticket stub. Free parking. M-Sa 11:30 am-2 am, Su 1 pm-1 am. www.delilahs.com. 100 Spring Garden St., 215.625.2800. **Map 1, L2**

Live Music Clubs

THE CLEF CLUB OF JAZZ AND THE PERFORMING ARTS—This four-story building, affectionately referred to as "The House That Jazz Built," was formed by a music union in the mid-20th century and has been the hangout of such famous members as John Coltrane, Nina Simone and Ella Fitzgerald. It has a large concert hall and boasts an elegant bar on the second floor, which overlooks a stage and tables. www.clefclubofjazz.org. 738 S. Broad St., 215.893.9912. **Map 1, H7**

DRINK SPECIALS
MON-FRI 4-7PM

COMPLIMENTARY BUFFET
7 DAYS A WEEK FROM 5-7PM

EXPRESS LUNCH SPECIALS
MON-FRI 11:30AM-3PM

FREE ADMISSION
WITH HOTEL KEY
OR AFTER HOME GAMES
*WITH PROOF OF ATTENDANCE

DELILAH'S
THE GENTLEMEN'S CLUB & STEAKHOUSE

100 SPRING GARDEN STREET • PHILADELPHIA
FREE PARKING • FULL MENU/LATE NIGHT DINING
215.625.2800 • WWW.DELILAHS.COM



RIDE

PHLASH® is your quick, convenient and affordable connection throughout Center City Philadelphia!

GET AN ALL-DAY PASS FOR ONLY \$5

or pay \$2 per ride. Purchase your pass on board a PHLASH® bus, at a Visitor Center location, or online. Visit RidePhillyPHLASH.com for more information.

2018 Service Schedule:
March 30 – April 29;
September 7 – November 18
 Weekend Service (Runs Friday - Sunday)

May 1 – September 3;
November 23 – December 30*
 Daily Service (Runs 7 days a week)

PHLASH® runs 10:00 a.m. – 6:00 p.m.
Service every 15 minutes

- Children 4 and under and Seniors ride FREE
- FREE with SEPTA Key, TrailPass, TransPass, one-day Independence Pass or Family one-day Independence Pass

The Philly PHLASH® Downtown Loop seasonal transit program is managed by the Independence Visitor Center Corporation (IVCC). PHLASH® vehicle service is provided by Krapf Group, Inc.

JOHNNY BRENDA'S—Catch locally and nationally renowned indie rock acts almost every night at this hipster hangout in the up-and-coming Fishtown neighborhood. The venue is upstairs from a tavern that features upscale pub grub. This month: *Frankie Rose*, **May 2**; *Soccer Mommy*, **May 3**; *Jackie and Jesse*, **May 4**; *Jesse Williams*, **May 5**; *Heavy temple*, **May 6**; *Demo Taped*, **May 7**; *Braids*, **May 9**; *Rolling Blackouts*, **May 10**; *Straw Hats*, **May 11**; *Givers*, **May 12**; *Margaret Glaspy and Julien Lage*, **May 13**; *Kid Koala's Vinyl*, **May 17**; *Sweet Spirit*, **May 18**; *Naomi Wachira*, **May 20**; *Dubble Shot with Zillas on Acid DJs*, **May 22**; *Mount Kimbie*, **May 23**; *Broken Shadows*, **May 24**; *This Is The Kit*, **May 26**; *VHS Collection*, **May 29**; *Michael Rault*, **May 30**; *Post Animal*, **May 31**. www.johnnybrendas.com. 1201 N. Frankford Ave., 215.739.9684. **Map 1, L1**

WORLD CAFE LIVE—There's always something happening at this University City venue and restaurant, featuring local and national acts on two stages and frequent open mics and jam sessions. Ticket prices and show times vary. F from 11 am, Sa-Th from 5 pm. This month: *Nina Nesbitt*, **May 1**; *Allman Brown*, **May 2**; *Chris Paterno Band and Juice*, **May 3**; *Bahamas*, **May 4**; *The Philadelphia Moth Storyslam*, **May 7**; *The Yardbirds*, **May 9**; *The Brevet*, **May 10**; *United We Dance*, **May 10**; *David Ford*, **May 11**; *Byrne and Kelly*, **May 13**; *The Paramour Tour: Featuring Massive*, **May 18**; *Kali Masi*, **May 22**; *Justin Townes Earl*, **May 23**; *Susto*, **May 24**; *Lissie*, **May 25**; *Rising Appalachia*, **May 27**; *Chaos Chaos*, **May 31**. www.philly.worldcafelive.com. 3025 Walnut St., 215.222.1400. **Map 1, E5**

Sports

ARENA FOOTBALL: SOUL HOME GAMES—With multiple division, conference and world championships, the winningest Arena Football League team tackles rivals at Wells Fargo Center. www.philadelphiasoul.com. Wells Fargo Center, 3601 S. Broad St., 215.253.4900. **Map 4, B4**

PHILADELPHIA PHILLIES—Catch the fightin' Phils at Citizens Bank Park, a ballpark that combines modern amenities with old-fashioned charm. San Francisco Giants **May 7-10**; New York Mets **May 11-13**; Atlanta Braves **May 21-23**; Toronto Blue Jays **May 25-27**. www.phillies.com. Citizens Bank Park, One Citizens Bank Way, 215.463.1000. **Map 1, H8**

Theater

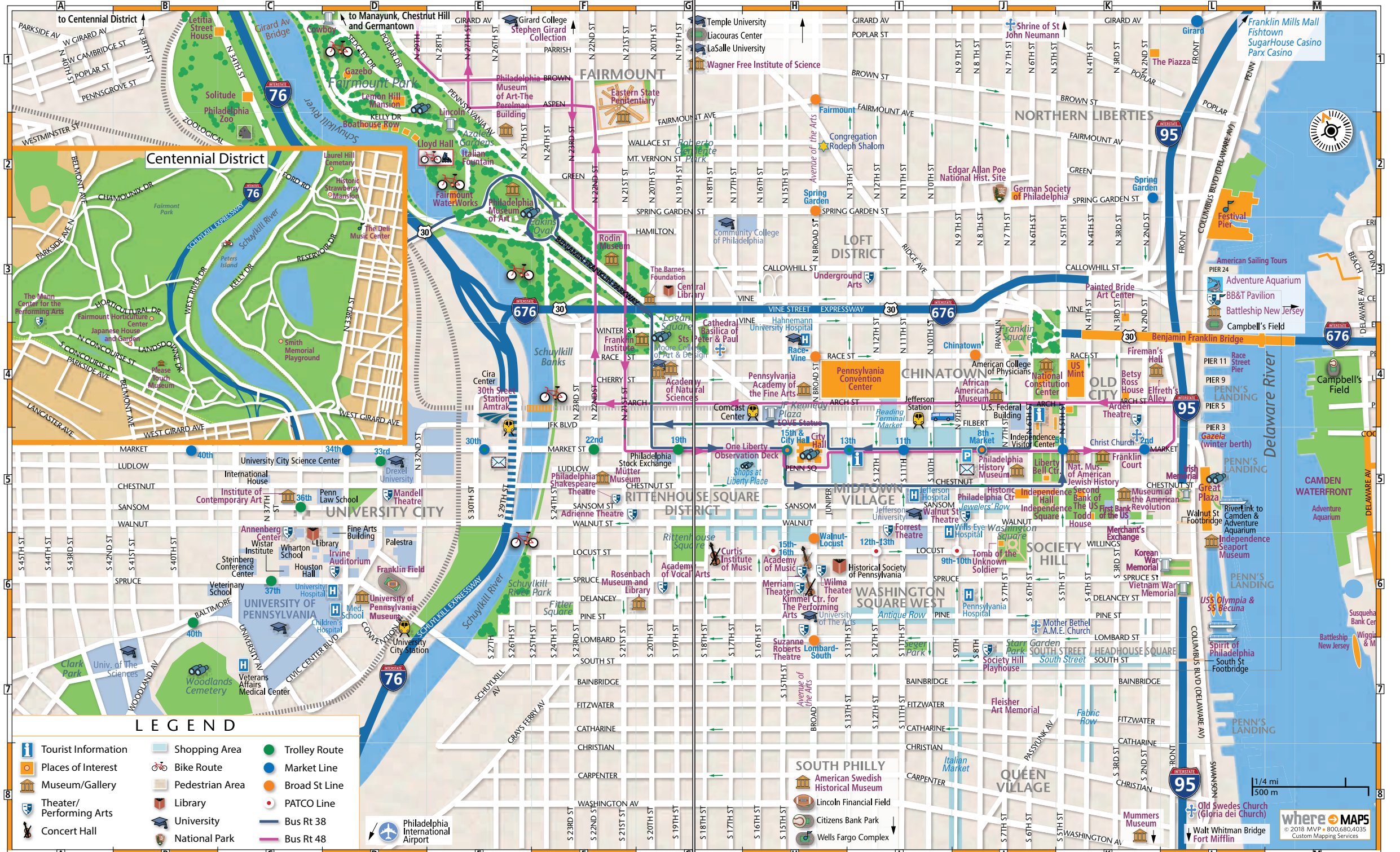
KIMMEL CENTER FOR THE PERFORMING ARTS—This elegant entertainment complex houses multiple stages in the hub of Philadelphia's Avenue of the Arts. This month: *"Paw Patrol Live, The Great Pirate Adventure,"* **May 4-6**; *"Don Quixote,"* **May 31**. www.kimmelcenter.org. 300 S. Broad Street, 215.670.2300. **Map 1, H6**

WALNUT STREET THEATRE—America's oldest continuously operating theater has been bringing classics to life on stage since 1809. This month on the Mainstage: *"Mamma Mia!"*, **May 15-July 15**. Studio on 3: *"Tell Me on a Sunday,"* **through June 10**. www.walnutstreettheatre.org. 825 Walnut St., 215.574.3550. **Map 1, J5**



MAP 1 PHILADELPHIA DOWNTOWN WEST

PHILADELPHIA DOWNTOWN EAST



LEGEND

- Tourist Information
- Places of Interest
- Museum/Gallery
- Theater/Performing Arts
- Concert Hall
- Shopping Area
- Bike Route
- Pedestrian Area
- Library
- University
- National Park
- Trolley Route
- Market Line
- Broad St Line
- PATCO Line
- Bus Rt 38
- Bus Rt 48
- Philadelphia International Airport

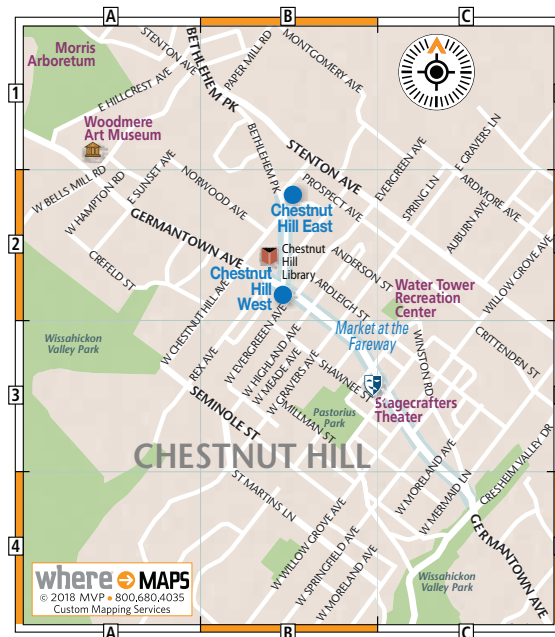




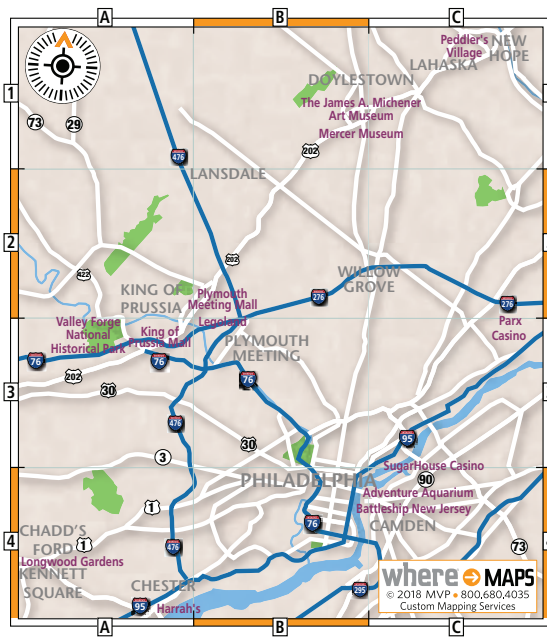
MAP 2 PHILADELPHIA HISTORIC AREA



MAP 3 PHILADELPHIA CHESTNUT HILL



MAP 4 PHILADELPHIA METRO MAP



MAP 5 PHILADELPHIA SEPTA

