

# WIN A TRIP TO NYC

and National Geographic Encounter: Ocean Odyssey!

National Geographic Encounter: Ocean Odyssey is a ground-breaking immersive entertainment experience that uses cutting-edge technology to transport you on an incredible underwater journey across the ocean.

Join your friends and family on this interactive, walk-through experience where National Geographic Encounter's photo-realistic animation gives you access to rarely seen moments in nature. Encounter a life-sized Humpback whale, a battle between ferocious Humboldt squid, a magnificent bait ball feeding frenzy and much more!

**ENTER DAILY** through March 31, 2018 at [wheretraveler.com/contest](http://wheretraveler.com/contest)

\*Trip includes airfare and accommodations for two, plus more.



## ENCOUNTER

OCEAN ODYSSEY

Times Square

[natgeoencounter.com](http://natgeoencounter.com)

[#OceanOdyssey](https://twitter.com/OceanOdyssey)

[wheretraveler.com](http://wheretraveler.com)

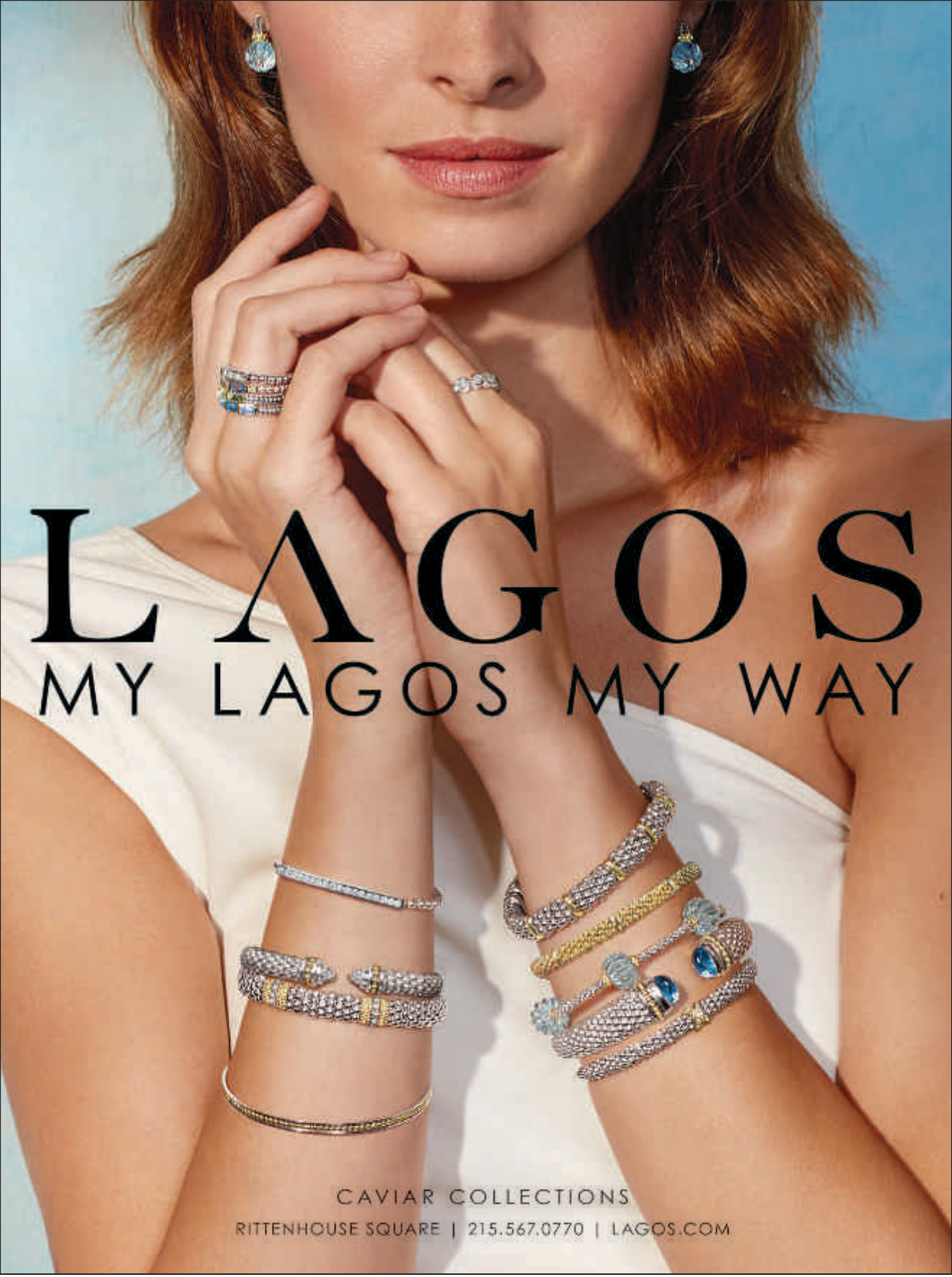
MARCH 2018  
THE COMPLETE GUIDE TO GO®

# Philadelphia where

[wheretraveler.com](http://wheretraveler.com)

## FLYING HIGH

Celebrate the home of the new Super Bowl champs



# LAGOS

MY LAGOS MY WAY

CAVIAR COLLECTIONS

RITTENHOUSE SQUARE | 215.567.0770 | LAGOS.COM

CONTENTS

SEE MORE OF PHILADELPHIA AT [WHERETRAVELER.COM](http://WHERETRAVELER.COM)

## the plan

### 02 Editor's Itinerary

The essential things to see and do in Philadelphia, including a 90-minute visit to a historic, luminous "garden" indoors.

### 04 Where Calendar

#### Hot Dates This Month

Top things to do in March.



### 40 Philadelphia Your Way

Curated suggestions for art lovers, first-timers and after-hours revelers.



#### ON THE COVER

Crowds gather on S. Broad St. in front of City Hall to celebrate the Eagles' historic Super Bowl win. ©ISAAC ARJONILLA

#### CONNECT WITH US



READ US ON MAGZTER

(FROM LEFT) @PEELING PRODUCTIONS; ©JUDY MILLER/MORRIS ARBORETUM

## the guide

### 12 SHOPPING

Top spots to shop, from department stores to independent boutiques

### 18 GALLERIES & ANTIQUES

Paintings, photography, sculptures, antiques, plus exhibitions to see now

### 20 MUSEUMS & ATTRACTIONS

Must-see sites including science museums, historic places and observatories

### 24 DINING

Tasty Philly restaurants, from fine dining to fast casual, in 16 neighborhoods

### 31 ENTERTAINMENT

Fun bars, hip lounges, world-class theater and many more ways to enjoy the arts

### 35 NAVIGATE

Guidance for finding your way around town: transportation, information centers and tours



Morris Arboretum

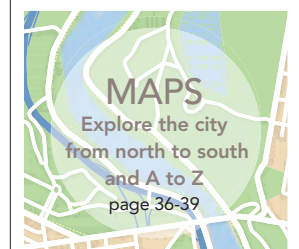
## where now

### 8 Chilladelphia

This bustling city offers tranquil places for quiet contemplation. Here's where to go to wind down. BY AMY GORDON

### 10 Garden Glories

From off-the-beaten track green spaces to spectacular flower shows, everywhere you look, Philly is blooming. BY REGAN STEPHENS



NEWS TO TRAVEL BY

# Essential Philadelphia



Even if you're not a sports fan, you can't help but bask in the glow of last month's Super Bowl win. For the first time in the city's history, the Eagles brought home the Lombardi Trophy, and we're likely to feel its effects for months to come. But beyond having the best NFL football team (and fans!) in the world, Philadelphia also has much more going for it. You could spend weeks getting to know it all, but if you have only limited time, we can show you the top spots. With spring just getting started, I'm heading *indoors* to take in the season.

## 90 MINUTES IN: Dream Garden Mosaic

While flowers are starting to bloom all over town, another garden has been quietly showing off its glorious flora since 1918. To find this beauty, head to the Curtis Center, the 1890s Georgian Revival-style building that once served as the headquarters for the Curtis Publishing Company. The building itself has an intriguing past, as it once housed the offices of famous publications, *The Ladies Home Journal* and *The Saturday Evening Post*.



Just inside the lobby, you'll find what was once the country's largest glass mosaic (that honor went to the Wing Lung Bank mural in Alhambra, California, in 2007). Designed by Louis Comfort Tiffany and based on a luminous landscape painting by Philadelphia's own Maxfield Parrish, the mosaic took six months to install—No wonder! It's

made up of six panels consisting of more than 100,000 glass tesserae in more than 260 color tones.

In 1998, the city almost lost the work to casino magnate Steve Wynn, who tried to purchase it for his own private collection at a price tag of \$9 million. Thankfully, a public outcry put the skids on the sale, and the Philadel-

phia Historical Commission later designated it a "historic object," adding an extra layer of protection. In time, the Pennsylvania Academy of the Fine Arts purchased the 15-by-49-foot artwork, ensuring its place inside the lobby of the Curtis Center and preserving the original legacy of Cyrus Curtis—and that of Tiffany and Parrish—for more generations to enjoy, year after year. *For details, see page 21.*

**W** Get going! Explore the city at [wheretotraveler.com](http://wheretotraveler.com).

## where® in the world

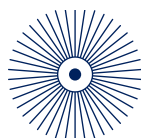
Where is an international network of magazines first published in 1936 and distributed in over 4,000 leading hotels in more than 50 places around the world. Look for us when you visit any of the following cities, or plan ahead for your next trip by visiting us online at [wheretotraveler.com](http://wheretotraveler.com).

**UNITED STATES** Alaska, Atlanta, Baltimore, Boston, Charleston, Charlotte, Chicago, Dallas, Indianapolis, Jacksonville/St. Augustine/Amelia Island, Las Vegas, Los Angeles, Maui, Miami, Minneapolis/St. Paul, New Orleans, New York, Oahu, Orange County (CA), Orlando, Philadelphia, Phoenix/Scottsdale, San Diego, San Francisco, Seattle, St. Louis, Tampa, Tucson, Washington, D.C. **ASIA** Hong Kong, Macau, Singapore **AUSTRALIA** Brisbane, Gold Coast, Melbourne, Sydney **CANADA** Calgary, Canadian Rockies, Edmonton, Halifax, Muskoka/Parry Sound, Ottawa, Toronto, Vancouver, Victoria, Whistler, Winnipeg **EUROPE** Berlin, Budapest, Istanbul, London, Madrid, Milan, Moscow, Paris, Rome, St. Petersburg



# Uncover the Story Behind the Science

## Science History Institute



Chemistry · Engineering · Life Sciences

315 Chestnut Street  
Philadelphia, PA 19106

**Museum Hours:**  
Tuesday–Saturday  
10:00 a.m.–5:00 p.m.  
**Free Admission**

[sciencehistory.org](http://sciencehistory.org)



(FROM TOP) ©ANNE KIM-DANNIBALE; ©G. WIDMAN FOR VISIT PHILADELPHIA™

YOUR TRAVELING COMPANION SINCE 1936®



Member of the **M** Morris Media Network

PUBLISHER **Rick Kestenbaum**  
EDITOR **Anne Kim-Dannibale**  
EDITORIAL ASSISTANT **Alexander Oliveira**

ADVERTISING & CIRCULATION  
ASSOCIATE PUBLISHER **Brenda Mendte**  
CIRCULATION AND COMMUNICATIONS MANAGER  
**Zach Santo**

EDITORIAL & DESIGN  
ART DIRECTORS **Dusty Martin**  
CONTRIBUTING WRITERS **Amy Gordon, Regan Stephens**

### MORRIS VISITOR PUBLICATIONS

MVP | EXECUTIVE  
PRESIDENT **Donna W. Kessler**  
CHIEF FINANCIAL OFFICER **Dennis Kelly**  
VICE PRESIDENT OF OPERATIONS **Angela E. Allen**  
REGIONAL VICE PRESIDENT, SALES **Kristen Standish**  
DIGITAL OPERATIONS MANAGER  
**Richard H. Brashear II**  
DIRECTOR OF CIRCULATION **Scott Ferguson**

MVP | CREATIVE  
CHIEF CREATIVE OFFICER **Haines Wilkerson**  
SENIOR EDITORIAL DIRECTOR **Margaret Martin**  
DIRECTOR OF PHOTOGRAPHY **Isaac Arjonilla**  
CREATIVE COORDINATOR **Beverly Mandelblatt**

MVP | NATIONAL SALES  
VICE PRESIDENT, INTEGRATED/DIGITAL SALES  
**Rebekah Valberg**  
VICE PRESIDENT, NATIONAL MARKETING  
**Adeline Tafuri Jurecka**  
DIRECTOR OF NATIONAL SALES **Liza Meneades**  
MANAGER, NATIONAL INTEGRATED SALES  
**David Gately**

MVP | PUBLICATION SERVICES  
PUBLICATION SERVICES DIRECTOR **Karen Fralick**  
PUBLICATION SERVICES MANAGER **Cher Wheeler**  
DIGITAL IMAGING **Erik Lewis**

MVP | MANUFACTURING & TECHNOLOGY  
DIRECTOR OF MANUFACTURING **Donald Horton**

E-mails for all of the above except contributors:  
[firstname.lastname@morris.com](mailto:firstname.lastname@morris.com)

## MVP

Morris Visitor Publications

MVP | PHILADELPHIA  
1845 Walnut St., Suite 980, Philadelphia, PA 19103  
215.893.5100, 215.893.5105 (fax)

MORRIS COMMUNICATIONS  
CHAIRMAN **William S. Morris III**  
PRESIDENT & CEO **William S. Morris IV**

### wheretotraveler.com

Where® magazine is produced by Morris Visitor Publications (MVP), a division of Morris Communications Co., LLC, 725 Broad St., Augusta, GA 30901, [morrismedianetwork.com](http://morrismedianetwork.com). Where magazine and the where® logo are registered trademarks of Morris Visitor Publications. Where makes every effort to ensure the accuracy of the information it publishes, but cannot be held responsible for any consequences arising from errors or omissions. All rights reserved. Reproduction in whole or in part strictly prohibited.



# BEST STEAKS. EPIC DESSERTS. LOCAL FLAVOR. FREE PARKING.

ONE OF AMERICA'S BEST STEAKHOUSES  
IS RIGHT HERE IN PHILLY.



## SUGAR HOUSE CASINO

FREE SELF-PARKING ON N. DELAWARE AVE. 1 MILE NORTH OF THE BEN FRANKLIN BRIDGE  
@ SUGARHOUSECASINO.COM

GAMBLING PROBLEM? CALL 1-800-GAMBLER.



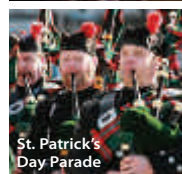
# HOT DATES

## ALL MONTH: "Crocs—Ancient Predators in a Modern World"

Nearly a dozen live crocodiles, alligators and caimans (oh my!) invade the Academy of Natural Sciences of Drexel University. No, it's not a scene from "Godzilla," but an in-person, detailed look at these imposing creatures, some of which are endangered due to human interference. Interactive activities demonstrating crocodile strength, communication and more immerse visitors in the world of these animals. It's all an effort to engage—and organizers hope—inspire conservation. \$19.95; children ages 3-12 \$15.95 (weekends higher). 1900 Benjamin Franklin Parkway, 215.299.1000, [ansp.org](http://ansp.org)



Philly Wine Week



St. Patrick's Day Parade

There's a lot more going on this month. Visit us online: [wheretraveler.com](http://wheretraveler.com)

## 6 Great Things Not to Be Missed

### 1 "SOMETHING ROTTEN!"

> THROUGH MARCH 4

Local Rob McClure stars in this multiple Tony Award-nominated romp about the very first musical. Times vary. From \$20. *Kimmel Center*, 240 S. Broad St., 215.893.1999, [kimmelcenter.org](http://kimmelcenter.org)

### 2 "GUERRILLA GIRLS"

> THROUGH MARCH 17

The feminist artists collective revisits some of its most influential campaigns from the 1980s and '90s. Free. *The Galleries at Moore*, 20th St. & The Parkway, 215.965.4027, [moore.edu](http://moore.edu)

### 3 EAST PASSYUNK RESTAURANT WEEK

> THROUGH MARCH 9

Eat at famed "Cheesesteak Corner" and beyond when 26 local dining rooms offer

fixed-price lunch and dinner deals. \$15, \$25 & \$35. *Roughly 15th St. to Washington Ave.*, [eastpassyunkrestaurantweek.com](http://eastpassyunkrestaurantweek.com)

### 4 ST. PATRICK'S DAY PARADE

> MARCH 11

One of the oldest parades in the country marches down Market from City Hall to Penn's Landing. Noon-3 pm. Free. *Broad & Market sts.*, [philadelphiastpatparade.com](http://philadelphiastpatparade.com)

### 5 QFLIX > MARCH 19-25

An expanded lineup, more events and a focus on local student films boost this year's cinematic fest. Prices/times/venues vary. [qflixphilly.com](http://qflixphilly.com)

### 6 PHILLY WINE WEEK

> MARCH 22-29

More than 60 top restaurants all around town host fun sip-and-swirl events. Prices/venues vary. [phillywineweek.org](http://phillywineweek.org)

## TOP SPOTS

"March Madness" descends as NCAA Division I men's teams battle it out for the top prize. Here are a few places to catch all the b-ball action.

### CITY TAP HOUSE

With 60 taps of rare and local brews, this University City spot has one of the most extensive draft beer lists around. On the menu, find tasty bites like honey goat cheese brick oven pizza and a pork burger topped with pickled apple slaw, bacon and a fried egg. 3925 Walnut St., 215.662.0105, [www.citytap.com](http://www.citytap.com)

### FIELD HOUSE

Located inside the Pennsylvania Convention Center, this renovated space offers 50 plasma TVs and 40 beers on tap, most of which are local brews. Pair with nosh like double-smoked bacon popcorn and cheesesteak dumplings. [www.fieldhousephilly.com](http://www.fieldhousephilly.com)

### FOUNDING FATHERS SPORTS BAR & GRILL

Thirteen big-screen TVs make every seat at this upscale bar feel court-side. Beers on tap run from regional to big-name, with bites like mac and cheese doughnuts and flatbreads. 1612 South St., 267.519.0253, [www.foundingfathersbar.com](http://www.foundingfathersbar.com)

### XFINITY LIVE!

This enormous, 80,000-sq.-ft. space houses six venues, including Broad Street Bullies Pub and PBR Bar & Grill, where fans ride a mechanical bull. 1100 Pattison Ave., 267.443.6415, [www.xfinitylive.com](http://www.xfinitylive.com)

(FROM TOP) ©PEELING PRODUCTIONS; ©JAZZ3311/SHUTTERSTOCK; ©CHRISPHILLY5448/FLICKR; CREATIVE COMMONS

# SIGHTSEEING TOURS OF PHILADELPHIA

Frequent departures from 5th & Market Streets (N.E. Corner)

Philadelphia  
TROLLEY WORKS  
and  
76 CARRIAGE  
COMPANY



**Trolley Tours**  
• 1 Day, 2 Day or 3 Day pass  
• 27 Stops  
• 90+ Min. Daily Tours



**Carriage Tours**  
Private Coaches  
Daytime Tours  
Evening Rides

BIG BUS

• PHILADELPHIA •

The double-decker bus tours provide amazing views of the City!

• Hop on Hop Off • 1 Day, 2 Day or 3 Day pass  
• 27 Stops

Call for a FREE shuttle pick up from Airport and Center City hotels

Now available in foreign languages



TICKETS SOLD AT 5TH & MARKET, ALL VEHICLES AND [PHILLYTOUR.COM](http://PHILLYTOUR.COM)

Certificate of Excellence  
2016 WINNER

Check out our Specialty Tours

Philly  
by  
Night  
8pm Departures from  
12th and Filbert Streets

215-389-TOUR (8687) | [phillytour.com](http://phillytour.com)

FRANKLIN'S  
FOOTSTEPS  
WALKING  
TOURS



Amish Country  
Private City Tours  
Ghost Tours  
Combo Tours  
and More!

Certain Tours are operated seasonally



LIKE A LOCAL  
"WHIZ WIT"



# How to Eat Like a Local

PRESENTED BY PAT'S KING OF STEAKS

● No visit to Philadelphia would be complete without a visit to the birthplace of the cheese steak sandwich, Pat's King of Steaks®. Sure, there are lots of places in Philly to get a cheesesteak, but only Pat's gives you the authentic experience that locals have lined up for since 1930.

1237 E. PASSYUNK AVENUE (AT 9TH & WHARTON)  
PATSKINGOFSTEAKS.COM • #ORIGINATOR

LOCATIONS: CHEESESTEAK, PHILADELPHIA (OLIVER), SPRINGFIELD, PHOTOGRAPHY

## How to Order Like a Local

DON'T SAY DO SAY

Good afternoon, I would like the sandwich that you are most famous for, the one with steak and Cheez Whiz and onions. Can I please have one of those?

Whiz Wit

Would it be at all possible to have that without onions?

Whiz Wit-Out

I'll take a cheesesteak, without the cheese, but with onions.

Plain Wit

On second thought, no onions.

Plain Wit-Out

Hmmm...I'd like a cheesesteak with...um, hmmm...which cheese do I want?

"Provolone Wit" or "Provolone Wit-Out" or "American Wit" or "American Wit-Out" or "Pizza Wit" or "Pizza Wit-Out"

Chef and third generation Pat's owner Frankie Oliveri, as seen on Food Network, Travel Channel, Spike and more



● Want mushrooms and/or peppers? Want to try our Roast Pork, Hot Dogs or Fish Cakes? Just ask any way you want! Pay with cash, grab your sandwich, then step to the other window for fries and drinks. Got it? Great! You're now an honorary local. See you at Pat's!

# → Philadelphia where now

The savvy traveler's guide to the City of Brotherly Love



RELAX + RENEW

## Chilladelphia

This city bustles with fast-paced energy and cosmopolitan allure but also offers a range of ways to focus on total relaxation. Here are our top picks for tranquil places in which to wind down. By Amy Gordon



(FROM LEFT) ©MATT STANLEY; ©FZKES/SHUTTERSTOCK; ©ANZETTII/ISTOCK; (FACING PAGE) ©MATT STANLEY

### Outdoor Oases

#### MORRIS ARBORETUM

This 92-acre expanse feels anything but cified and offers a variety of spots ripe for quiet contemplation. The Orange Balustrade provides a shaded retreat with picture-perfect views. At the Katsura Tree, visitors find solace under a wide canopy of branches with fragrant leaves. 100 E. Northwestern Ave., 215.247.5777, www.morris-arboretum.org

#### LONGWOOD GARDENS

Exquisitely manicured gardens, tranquil fountains and intricate horticultural displays fill more than 1,000 acres at this haven created by Pierre S. du Pont. Visitors leave the world behind as they meander through attractions like Peirce's Woods, teeming with plants and trees native to the eastern United States. 1001 Longwood Road, Kennett Square, Pa., 610.388.1000, www.longwoodgardens.org

#### RACE STREET PIER

This urban park (left) located above the Delaware River is near Center City, but with

cool breezes and sweeping views, the area seems a world away. For an extra dose of Zen, the pier hosts free yoga daily throughout spring, summer and fall. *Race St. and N. Columbus Blvd.*, 215.922.2FUN, www.delawareriverwaterfront.com

### Spa & Beauty

#### LUSH SPA

One of just two locations in the United States with full-service spas, this outpost channels a quaint English cottage with treatments that are as inventive as the store's bath products. Added bonus? Some services use sounds, scents and even inspirational words. 1525 Walnut St., 215.546.5874, www.lushusa.com

#### MI CUMBIA

Colombian culture informs this relaxing salon, where the coconut manicure and pedicure are particularly popular. After exfoliating the skin with shredded coconut, aestheticians lightly brush on warm coconut oil. While there, patrons sip on Colombian coffee and satisfy sweet cravings with imported

chocolates. 328 S. 17th St., 215.735.7980, www.micumbia.co

#### RESCUE SPA

This Rittenhouse Square spot offers delightfully indulgent pampering. Menu highlights include the Super Natural Massage, where aromatherapy and gentle techniques induce a state of harmony, and the Detox Wrap, which uses sea mud to boost circulation, purify the body and soften the skin. Be sure to build in time to enjoy the infrared saunas in the men's and women's locker rooms. 1601 Walnut St., 3rd floor, 866.772.2766, www.rescuespa.net

### Alternative

#### CITY HYDRATION

Customers here receive customized IV infusions that address particular goals like hangover relief, jet lag recovery and immunity. Grab an eye mask or a cup of hot tea, and cozy up under a heated blanket while licensed medical professionals administer the treatments. 1315 Walnut St., Suite 1403, 215.416.0109, www.cityhydration.com

#### FLOTATION PHILLY

For relaxation that's truly free from distraction, the harried hit these sensory deprivation tanks, where they float in purified Epsom salt baths as sights, sounds and even gravity melt away. 534 E. Girard Ave., 602.923.1913, www.flotationphilly.com

### Meditation

#### SHAMBHALA

Informed by the idea that our natural state of mind is calm and clear, instruction at this New Age-y spot focuses on mindfulness and awareness, helping practitioners of all experience levels achieve a state of quiet contemplation. 2030 Sansom St., 215.568.6070, www.philadelphia.shambhala.org

#### KADAMPA MEDITATION CENTER

At this center, Buddhist principles guide visitors on a path to enlightenment. Those seeking to balance the mind and open the soul can attend one class or sign up for ongoing, deeper courses of study. 1102 Pine St., 267.702.3817, www.meditationinphiladelphia.org



## Caffeine Fix

After all that down time, ready to get back in the mix? These spots offer a caffeine and artistic boost.

Ordering a simple cuppa as part of your morning routine or afternoon pick-me-up is a thing of the past. Now, it's all about latte art. For the uninitiated, latte art is the creative whim of a barista who uses milk foam and espresso to paint designs atop your drink.

#### Square One Coffee

Intricate leaf art pull you in, while a large selection of roasts keep you wanting more. All beans are roasted at the purveyor's micro-roaster in Lancaster, Pennsylvania, ensuring peak freshness that hits you after just one sip. **GO:** 249 S. 13th St., 267.758.6352

#### Bodhi Coffee

Familiar floral patterns are the staple here, but if you're visiting during a big event, you just may see something special—like a football in honor of the Super Bowl. Wooden tables and large windows make it an ideal spot for photos. And the java? They carry Brooklyn-based Stumptown Coffee Roasters and Philadelphia's own Elixir. **GO:** 410 S. 2nd St., 267.239.2928

#### Joe Coffee

The simple white dishware at this Rittenhouse Square spot (part of an East Coast chain) enhances the beverage art work. The cafe's boho feel adds to the cozy quarters, too. **GO:** 1845 Walnut St., 215.278.2454

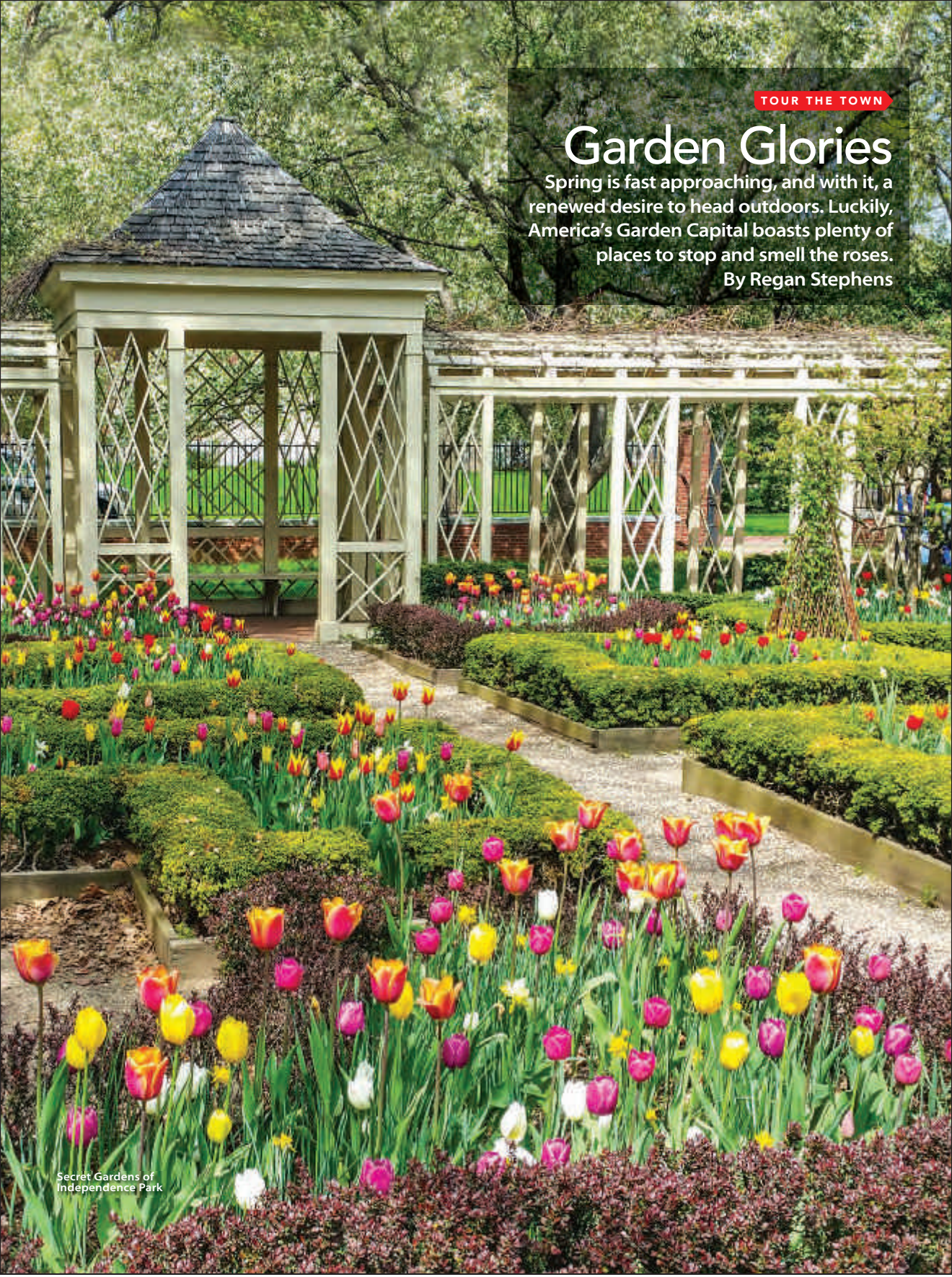


TOUR THE TOWN

# Garden Glories

Spring is fast approaching, and with it, a renewed desire to head outdoors. Luckily, America's Garden Capital boasts plenty of places to stop and smell the roses.

By Regan Stephens



Secret Gardens of Independence Park



Glendinning Rock Garden

**GLENDINNING ROCK GARDEN**  
On the site of what used to be the early 19th-century Spring Garden Water Works in Fairmount Park, find this peaceful spot with a creek, waterfall and charming stone steps that seem straight out of a fairytale. *Kelly and Brewery Hill drives*

**THE JAMES G. KASKEY MEMORIAL PARK**  
Formerly known as the Bio-Pond, this three-acre botanic oasis is the oldest green space on the University of Pennsylvania campus. Rich with wildlife, the area is home to roughly 100 species of birds, insects, mammals and lichen. Also find a pollinator garden, pond, woodland paths, benches and chess board-covered tables. *Hamilton Walk and 36th St.*

**JOHN F. COLLINS PARK**  
It's easy to miss this tiny pocket between two buildings near the Shops at Liberty Place. Behind artist Christopher T. Ray's Wis-sahickon Gate and Estuary Gate, discover ivy-covered walls, a modern fountain, abundant shade and plenty of benches and tables, mak-

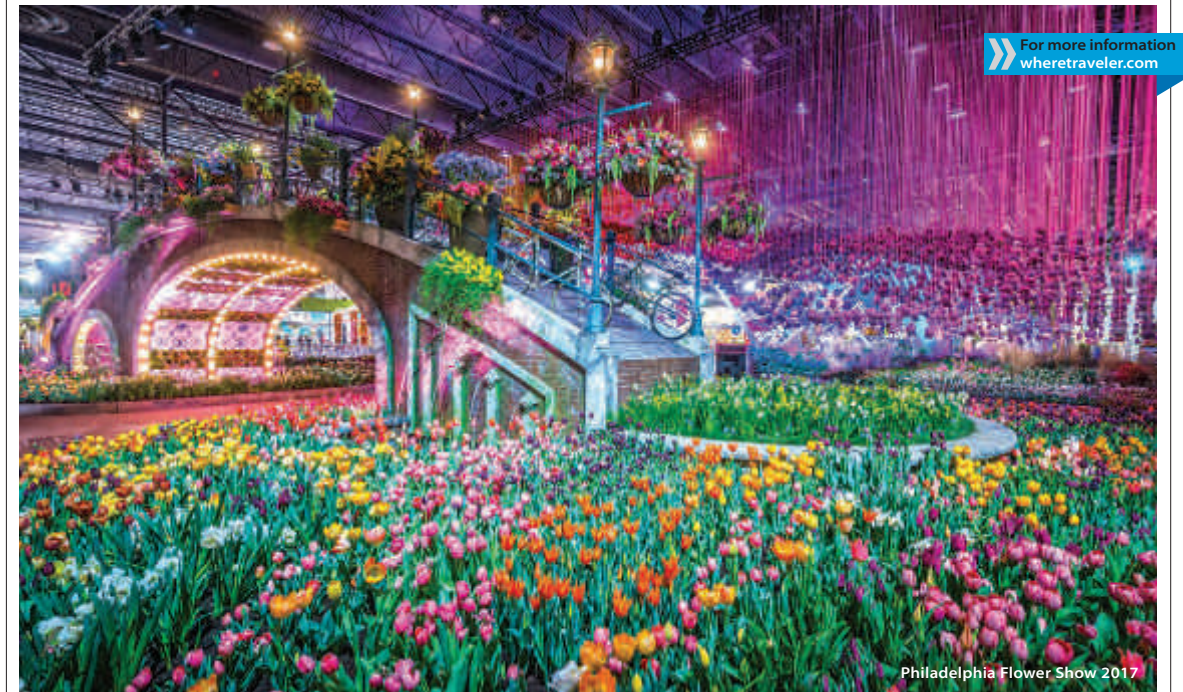
ing this tiny park a treasure. Open year-round, it's most crowded at midday when it's filled with locals on their lunch break. Join them, or pick a quieter time to savor the urban sanctuary. *1707 Chestnut St.*

**NED WOLF PARK**  
Known for its award-winning gardens, this park in the Mount Airy neighborhood teems with vibrant flowers dotted with benches and plenty of shady trees. The garden hosts lectures and Tai Chi classes, but at its core, it's an ideal spot to enjoy a morning coffee and a great book. *7018 McCallum St.*

**SECRET GARDENS OF INDEPENDENCE PARK**  
The 18th Century Garden and Bishop White Garden here represent the Colonial era, with fruit trees, a vine-covered pergola and raised beds bursting with flowers from that time. Nearby, the Rose Garden and the Magnolia Garden pay homage to the signers of the Declaration of Independence and to George Washington, who was fond of magnolias. *Between Walnut and S. 3rd sts.*

## Flower Power

Any visit to this garden capital should include a stop at the world's largest horticultural event, the Philadelphia Flower Show. From March 3 to 11, the Pennsylvania Horticultural Society's highly anticipated extravaganza takes over the Pennsylvania Convention Center with eye-popping displays. This year, the "Wonders of Water" theme transforms the Entrance Garden into a lush rain forest, complete with towering trees, creeping vines and lacy ferns. A shifting "rain curtain" reveals a pond surrounded by palm trees and tropical flowers, plus a rope bridge and 25-foot waterfall. Nature lovers have much more to explore in Philly. See right for details. *PHS Flower Show hours and prices vary, Pennsylvania Convention Center, 1101 Arch St., 800.428.9000, theflowershow.com.*



Philadelphia Flower Show 2017

For more information  
wheretraveler.com

(FROM TOP) ©LISA CEE (LISA CAMPEAU)/FLICKR, CREATIVE COMMONS; ©ROB CARDILLO PHOTOGRAPHY; (FACING PAGE) COURTESY THE SECRET GARDENS OF INDEPENDENCE PARK

# the where guide

## Shopping | March



### Vintage Instruments

Since 1974, this spot has stocked fine acoustic instruments, including a wide selection of C.F. Martin & Co. guitars. The shop's 19th-century digs also house plenty of other gems, too, from ukuleles to banjos and mandolins, plus accessories. [www.pickamartin.com](http://www.pickamartin.com). 507 S. Broad St. 215.545.1000. Map 1, H6



### Charlie's Jeans

The city's first stop for designer denim has won Philadelphia Magazine's Best of Philly award, and for good reason. For nearly 20 years, Charlie's has outfitted the city's denizens with jeans made in the U.S., while offering next-day alterations and top-notch customer service. [www.charliesjeans.net](http://www.charliesjeans.net). 233 Market St. 215.923.9681. Map 1, K5



### Bus Stop Boutique

British-born Elena Brennan has turned her Queen Village shop into a destination for fashionable footwear for both men and women. Located on historic Fabric Row, this hip shoe haven carries a wide range of styles from top and even hard-to-find designers. [www.busstopboutique.com](http://www.busstopboutique.com). 727 S. 4th St. 215.627.2357. Map 1, K7

### Apparel - Men

**COMMONWEALTH PROPER**—Expert style consultants work with individuals to create not only custom suits, but also shirts and even casual pieces designed to fit like a glove. By appt. only. M-F 10 am-6 pm, Sa-Su 10 am-4 pm. [www.commonwealthproper.com](http://www.commonwealthproper.com). 1839 Chestnut St., 267.319.1741. Map 1, G5

**DAMARI SAVILE**—Eagles safety Malcolm Jenkins and entrepreneur Jay Amin's menswear shop appeals to sharp dressers looking for a bit more detail in their outfits. Their 3,000-square-foot space offers ready-to-wear looks, but also a made-to-measure shop for custom pieces. A whiskey cellar, conference room and kitchen let gents host sartorially inclined events, too. M, Th, Su by appointment. Tu-W & F 10 am-7 pm, Sa 11 am-6 pm. [www.damarisavile.com](http://www.damarisavile.com). 709 Walnut St., 267.218.5760. Map 1, J5

**DISTANTE**—Since 1983, this boutique has been offering the latest in business attire and upscale looks, plus custom outfits made in Naples, Italy. By appt. only. Call to reserve. [www.distanteclothing.com](http://www.distanteclothing.com). 1510 Sanson St., 215.545.2850. Map 1, H5

**HENRY A. DAVIDSEN**—This tailor and custom clothier located one block from Rittenhouse Square also offers image consulting and ready-to-wear selections, including cufflinks, pocket squares and rounds, ties and more. By appt. only. [www.henrydavidson.com](http://www.henrydavidson.com). 1701 Spruce St., 215.310.0219. Map 1, G6

**MY.SUIT**—This New York City made-to-measure has earned raves since setting up in Rittenhouse Square. The shop offers expert measurements, hundreds of fabrics, a two-week turnaround on custom suits and reasonable prices. M-Sa 10 am-7 pm, Su noon-6 pm. [www.mysuit.com](http://www.mysuit.com). 1518 Walnut St., 215.545.3300. Map 1, H5

**NUTZ & BOLTZ**—North Wales native Anthony Noce's irreverent Washington Square West shop not only carries underwear and swimsuits, but also clothing by lines like Andrew Christian, Marco Marco and Nasty Pig. M-Sa 11 am-9 pm, Su noon-5 pm. [www.nutzandboltzfashion.com](http://www.nutzandboltzfashion.com). 1220 Spruce St., 267.639.5958. Map 1, I6

**P'S & Q'S**—Scope out the hand-picked, premium items at this family-owned and operated menswear shop, which carries a large inventory of casual and work-ready looks by in-demand brands

including Patagonia, Norse Projects, Kikkerland and Herschel Supply Co. M-Sa noon-7 pm, Su noon-6 pm. [www.psandqs.com](http://www.psandqs.com). 820 South St., 215.592.0888. Map 1, I7

### Apparel - Men & Women

**BOYDS PHILADELPHIA**—One of the country's largest men's stores and the city's largest designer women's store, this shop showcases the likes of Armani, Gucci, Zegna, Manolo Blahnik and Emilio Pucci. Free custom alterations and free valet parking. M-Sa 9:30 am-6 pm, W 9:30 am-8 pm. [www.boydsphila.com](http://www.boydsphila.com). 1818 Chestnut St., 215.564.9000. Map 1, G5

**CRASH BANG BOOM**—This indie shop just off of South Street specializes in punk rock clothing and accessories for guys and gals alike. Find leather jackets, plaid pants and rock music T-shirts from brands including Lip Service, Tripp NYC and Switchblade, plus studded jewelry, edgy shoes and rock memorabilia. M-Tu noon-7 pm, W-Th till 8 pm, F-Sa till 9 pm, Su till 6 pm. [www.crashbangboom.com](http://www.crashbangboom.com). 528 S. Fourth St., 215.928.1123. Map 1, K7

ALL COURTESY EACH BUSINESS

**HATS IN THE BELFRY**—This local chain offers a large selection of men's and women's dress and casual toppers from brands including Korber, Stetson, Giovanni, plus styles from the hat company's own line. M-Sa 10 am-7 pm, W 10 am-8 pm, Su 11 am-6 pm. [www.hatsinthebelfry.com](http://www.hatsinthebelfry.com). 1824 Chestnut St., 215.922.0303. Map 1, G5

**JACQUES FERBER**—This chic, well-regarded shop stocks coats of fur, shearling and down for women and men and other exceptional outerwear. Also look for designer accessories. Custom design, cleaning and repair services available.

M-Sa 10 am-5 pm. [www.jacquesferber.com](http://www.jacquesferber.com). Upstairs at 1708 Walnut St., 215.735.4173. Map 1, G5

**LOST + FOUND**—Affordable and trendy clothing, shoes, jewelry and handbags abound at this Old City storefront catering to both men and women. M-Sa 11:30 am-7 pm, Su noon-6 pm. 133 N. Third St., 215.928.1311. Map 1, K4

**SOUTH MOON UNDER**—Inside this spacious Center City shop, find hip, casual looks by Citizens of Humanity, FATE, Jules Smith and Trixie & Milo. M-Sa 10 am-7 pm, Su noon-5 pm.

[www.southmoonunder.com](http://www.southmoonunder.com). 1731 Chestnut St., 215.563.2298. Map 1, G5

### Apparel - Women

**323 ARCH STREET FASHION COLLECTIVE**—This "work/shop" concept is run by designers who create items in house. Shoppers browse a collection of locally made women's clothing, accessories and jewelry, all within view of the studio. Tu-Sa noon-5 pm. [www.323arch.com](http://www.323arch.com). 323 Arch St., 215.546.5975. Map 2, D2

**CACTUS COLLECTIVE**—Located along Fashion Row in Queen Village, this eclectic communal store gives shoppers a taste of Philly's indie style with a mix of vintage and locally made boho clothing, jewelry and gifts. Treasure hunters also score original art in the rotating gallery at the back of the shop. W-M noon-7 pm. 739 S. Fourth St., 267.908.4178. Map 1, K7

**ELLELAURI**—Located in the heart of the fashionable Rittenhouse Square neighborhood, this chic women's clothing brand is known for offering modern looks in elegant silhouettes and a sophisticated color palette at affordable prices. M-Sa 10 am-7 pm, Su noon-5 pm. [www.ellelauri.com](http://www.ellelauri.com). 114 S. 19th St., 267.457.5939. Map 1, G5

**JOAN SHEPP**—With more than 40 years in the biz, Shepp purveys women's designer apparel and accessories from top (but harder-to-find) European and American brands, including Dries van Noten, Rick Owens and Yohji Yamamoto. M-Tu and Th-Sa 10 am-6 pm, W till 8 pm, Su noon-5 pm. [www.joanshepp.com](http://www.joanshepp.com). 1811 Chestnut St., 215.735.2666. Map 1, H5

**KIMBERLY BOUTIQUE**—An industrial-chic atmosphere provides a cool backdrop for fashion-forward designs from Alice+Olivia, Drew, Lysse, Hudson Jeans, Lilla P and more at this hip shop. M and Sa 10 am-6 pm, Tu-F till 7 pm. 123 S. 16th St., 215.564.1066. Map 1, H5

**LOU LOU BOUTIQUE**—This small chain is known for offering a selection of stylish women's accessories in a boutique setting in new to the Midtown Village neighborhood. In addition to three signature lines, shoppers can find designer-inspired jewelry, handbags, scarves, hats and sunglasses, plus a wide range of gift items. Since prices are affordable, a few items snagged here won't break the bank. M-Th 11 am-8 pm, F-Sa 11 am-9 pm, Su 11 am-6 pm. [www.loulouboutiques.com](http://www.loulouboutiques.com). 143 S. 13th St., 267.538.1267. Map 1, I5

**PLATINUM**—Since 1999, this one-stop shop has been offering high-quality name brand clothing from labels like 7 For All Mankind, Diesel, Lacoste, Scotch & Soda, Hugo Boss and more. Su-M 11:30 am-8 pm, Tu-Th till 9 pm, F-Sa till 10 pm. [www.shopatplatinum.com](http://www.shopatplatinum.com). 526 South St., 215.599.7528. Map 1, J7

**SHOP SIXTY FIVE**—Former New York City stylist Linda LaRosa hand-picks pieces from designers like Elizabeth & James, Rag & Bone and RTA, creating an edgy assortment of luxury knitwear, designer denim, occasion dresses and distinctive jewelry with a downtown vibe. M-Sa 11 am-7 pm, Su till 5 pm. [www.shopsixtyfive.com](http://www.shopsixtyfive.com). 128 S. 17th St., 267.239.5488. Map 1, G5

**SOPHY CURSON**—This salon-like spot carries a well-curated collection of gowns, day-into-evening looks, jewelry and accessories by Blumarine, Edward Achour, and Tom and Linda Platt. M-F







Su noon-7 pm. [www.greenaislegrocery.com](http://www.greenaislegrocery.com). 1618 E. Passyunk Ave., 215.465.1411.

**LORE'S CHOCOLATES**—While in the historic district, indulge your sweet tooth with this candy shop's peanut butter balls, vanilla caramels and Liberty Bell-shaped chocolates, among other tasty selections. M-F 9 am-5:30 pm, Sa 10 am-4 pm. [www.loreschocolates.com](http://www.loreschocolates.com). 34 S. Seventh St., 215.627.3233. **Map 1, J5**

**READING TERMINAL MARKET**—Founded in 1893, this market has evolved into one of the city's major food meccas, where visitors can sample international and local specialties, including cheesesteaks and Pennsylvania Dutch treats. M-Su 8 am-6 pm. [www.readingterminalmarket.org](http://www.readingterminalmarket.org). 12th and Arch sts., 215.922.2317. **Map 1, I4**

**ROCKET FIZZ**—Feed your nostalgia at this retro candy shop, offering everything from candy dots and whirly pops to bulk saltwater taffy, plus a variety of soda selections in flavors like bacon, s'mores and mud pie. M-Th 11 am-7 pm, F-Sa 11 am-9 pm, Su 11 am-6 pm. [www.rocketfizz.com](http://www.rocketfizz.com). 302 Arch St., 215.650.3163. **Map 1, K4**

**TEUSCHER CHOCOLATES OF SWITZERLAND**—A bright, beautiful store featuring gorgeous handmade Swiss chocolates and exquisite champagne truffles. Fantasy packages, gift wrapping, shipping and custom orders available. M-Sa 10 am-6 pm, Su noon-5 pm. [www.teuscherphiladelphia.com](http://www.teuscherphiladelphia.com). The Shops at The Bellevue, 200 S. Broad St., 215.546.7600. **Map 1, H5**

## Jewelry

**ADORNAMENTI**—This warm and inviting shop on Antique Row carries a beautiful array of distinctive jewelry, from delicate pieces crafted with finely wrought silver to opulent baubles studded with semiprecious stones. M and W-Su noon-5 pm. 1106 Pine St., 215.922.2722. **Map 1, I6**

**ANALOG WATCH CO.**—This independent watchmaker focuses on craftsmanship in designing minimalist timepieces, allowing natural materials to shine. Tu-Sa 9 am-5 pm. [www.analogwatchco.com](http://www.analogwatchco.com). 1737 E. Passyunk Ave., 484.808.5831. **Map 3, D3**

**BARIO-NEAL**—Handcrafted in Philadelphia, this line of sophisticated jewelry is made exclusively with reclaimed precious metals, ethically sourced stones and low-impact, environmentally conscious practices. W-Th 1-7 pm, F-Su 11 am-6 pm. [www.bario-neal.com](http://www.bario-neal.com). 700 S. Sixth St., 215.454.2164. **Map 1, K7**

**BELLA TURKA**—The local owners of this jewelry shop regularly travel around the world in search of chic baubles, like gold coin necklaces, cocktail rings and chunky stone cuffs, and also offer funky items from select domestic designers. 13th and Sansom Sts. M-Sa 11 am-8 pm, Su noon-6 pm. [www.bellaturka.com](http://www.bellaturka.com). 113 S. 13th St. **Map 1, I5; 1700 Sansom St., 215.560.8733. Map 1, G5**

**CALEB MEYER**—Visit this shop for exquisite, handcrafted gold and platinum jewelry and fine American crafts. Caleb Meyer offers custom jewelry and gem buying for setting in their original designs. Tu-F 10 am-5:30 pm, Sa 10 am-5 pm. [www.calebmeyer.com](http://www.calebmeyer.com). 8520 Germantown Ave., 215.248.9250.

**EGAN DAY**—Inside a stately Rittenhouse Square townhouse with minimalist furnishings, Kate Egan displays elegant necklaces, bracelets, rings and earrings from designers including Ted Muehling

#teetime

GENO'S GEAR  
RIGHT ACROSS THE STREET AT 9TH & PASSYUNK

GENO'S STEAKS

Here today.  
where tomorrow.

Before you travel,  
go to [wheretraveler.com](http://wheretraveler.com)  
and see where to shop, dine  
and play once you arrive.

[wheretraveler.com](http://wheretraveler.com)  
Info only locals know.

[www.wheretraveler.com](http://www.wheretraveler.com)

Vintage  
Instruments, Inc.

Featuring  
C.F. Martin Guitar

Traditions That  
Improve with Time

507 South Broad Street,  
Philadelphia, PA  
215.545.1000

[www.vintage-instruments.com](http://www.vintage-instruments.com)

and Gabriella Kiss. M-Sa 11 am-6 pm. [www.egan.com](http://www.egan.com). 260 S. 16th St., 267.773.8833. **Map 1, H6**

**GOVBERG JEWELERS**—Launched in 1922, Govberg has become a Philadelphia institution thanks to its selection of fine timepieces. The shop is known internationally for carrying high-end, luxury brands including Patek Philippe, Rolex, Jaeger-LeCoultre and more. Trade-ins accepted. M-F 10 am-6 pm, Sa 10 am-5 pm. [www.govbergwatches.com](http://www.govbergwatches.com). 1521 Walnut St., 215.546.6505. **Map 1, H5**

**LAGOS**—Philadelphia-based jeweler Lagos' one-and-only flagship has been a fixture, located just steps from Rittenhouse Square. This jewel-box shop features award-winning collections in sterling silver and 18-kt. gold. Steven Lagos has been designing beautiful pieces accented with gemstones, diamonds and pearls for 40 years. Friendly and knowledgeable staff makes the shopping experience a pleasure. M-Sa 10 am-7 pm, Su noon-6 pm. [www.lagos.com](http://www.lagos.com). 1735 Walnut St., 215.567.0770. **Map 1, G5**

**MARYANNE S. RITTER JEWELERS**—Open since 1909, this store's experts create custom designs for fine diamonds and gemstones, and offer quality jewelry at affordable prices. Look for a large selection of cultured freshwater and saltwater pearls. M-Tu and Th-F 10 am-5 pm, W 10 am-6 pm, Sa noon-5 pm. [www.maryannesritterjewelers.com](http://www.maryannesritterjewelers.com). 704 Sansom St., 215.922.4923. **Map 1, J5**

**TOURNEAU**—This international brand offers more than 100 watch brands, including Cartier, Fendi, Gucci and Movado, plus 8,000 unique styles for men and women. M-Sa 10 am-9 pm, Su 11 am-6 pm. [www.tourneau.com](http://www.tourneau.com). Plaza at King of Prussia Mall, 160 N. Gulph Road, King of Prussia, Pa., 610.491.8801. **Map 4, C1**

## Salons & Spas

**ADOLF BIECKER SPA SALON**—For a day of pampering, this spa offers exceptional customer service in their "whole-person" spa designed to ensure you not only look great, but feel great as well. Services include massage therapy, body scrubs, and facials, as well as a full service salon. Call for appointment. [www.adolfbiecker.com](http://www.adolfbiecker.com). 1605 Sansom St., 215.735.6404. **Map 1, H5**

**EVIANA LIFE SPA**—At this holistic day spa near Rittenhouse Square, you'll find award-winning organic facials, massages, wraps, waxing services and a beautiful boutique full of stylish, eco-friendly goods. Eviana is Pennsylvania's only Dr. Hauschka skin care treatment center. Open M 11 am-7 pm, Tu 10 am-7 pm, W-Th 10 am-8 pm, F 9 am-7 pm, Sa 9 am-6 pm, Su 11 am-6 pm. [www.eviana.com](http://www.eviana.com). 109 S. 13th St., Second floor, 215.545.3344. **Map 1, I4**

**JUJU SPA & ORGANICS**—A short stroll from South Street, this inviting spa specializes in all-natural skincare products, spa treatments and salon services. Su-M noon-7 pm, W-F 10 am-7 pm, Sa 10 am-6 pm. [www.jujusalon.com](http://www.jujusalon.com). 713 S. Fourth St., 215.238.6080. **Map 1, K7**

**MI CUMBIA ORGANICA**—This top-rated nail salon operated by a husband-and-wife team offers water- and soy-based products for mani-pedis, foot massages and Brazilian waxing. By appointment. Su-M 10 am-4 pm, W-Th noon-8 pm, Tu and F-Sa 10 am-6 pm. [www.micumbia.com](http://www.micumbia.com). 328 S. 17th St., 215.735.7980. **Map 1, G6**

**MOKO**—In the heart of Old City, Moko is a one-stop beauty shop specializing in natural treatments and

products. Services include haircare and styling, scalp treatments, facials, waxing and makeup application. While you're there, stock up on natural soaps, skincare and makeup. Tu noon-6 pm, W-F 10 am-8 pm, Sa 10 am-6 pm. [www.mokobeauty.com](http://www.mokobeauty.com). 55 N. Third St., 215.922.MOKO. **Map 1, K4**

**RESCUERITTENHOUSE SPA**—This upscale European-style contemporary space specializes in massage therapy, detoxification and microdermabrasion. M-F 9 am-8 pm, Sa 9 am-7 pm. [www.rescuerittenhousespa.com](http://www.rescuerittenhousespa.com). 1601 Walnut St., 3rd Floor, 215.772.2766. **Map 1, H5**

## Shoes

**HEAD START SHOES**—Located in Center City, this footwear shop stocks styles from upscale designers, including Fiorentini & Baker, Roberto Del Carlo and Vic Matie. M-Tu 10 am-6 pm, W-Sa 10 am-7 pm, Su 11 am-5 pm. [www.headstartshoes.com](http://www.headstartshoes.com). 126 S. 17th St., 215.567.3247. **Map 1, G5**

**LAPSTONE & HAMMER**—Kate Rohrer designed this only-in-Philadelphia haven for sneakerheads. While the store's collection of well-tailored menswear, grooming products and accessories have received rave reviews, what truly commands attention in this 4,000-square-foot space is its extensive sneaker collection. M-Sa 10 am-7 pm, Su noon-5 pm. [www.lapstoneandhammer.com](http://www.lapstoneandhammer.com). 1106 Chestnut St., 215.592.9166. **Map 1, I5**

**TOBOX SHOES**—This chic local men's shop offers stylish and sophisticated looks from a wide selection of top-quality shoes, accessories and leather goods. Brands include hard-to-find labels like John Lobb, Carmina and Rancourt. M-Sa 10 am-6 pm. [www.toboxshoes.com](http://www.toboxshoes.com). 1822 Chestnut St., 215.644.9435. **Map 1, G5**

**UBIQ**—This trendy sneaker shop carries Puma and Nike SB, plus racks of skater-inspired threads from 10 Deep, Stüssy, Undefeated and Original Fake. M-Sa 10 am-8 pm, Su noon-6 pm. [www.ubiqlife.com](http://www.ubiqlife.com). 1509 Walnut St., 215.988.0194. **Map 1, H5**

## Shopping Centers

**THE BELLEVUE PHILADELPHIA**—Inside this historic 1904 Beaux Arts building in Center City, find upscale boutiques such as Tiffany & Co., Nicole Miller, Polo Ralph Lauren and Williams-Sonoma. Dining options include world-class restaurants XIX and The Palm, plus a gourmet food court. Also here, the state-of-the-art The Sporting Club fitness facility and Hyatt at The Bellevue. Hours vary by store. [www.bellevuephiladelphia.com](http://www.bellevuephiladelphia.com). 200 S. Broad St., 215.875.8350. **Map 1, H5**

**KING OF PRUSSIA MALL**—The East Coast's largest retail shopping center has seven top department stores, including Bloomingdale's, Lord & Taylor and Nordstrom, plus 400 specialty shops and restaurants. The mall is easily accessible from Routes 202, I-76 and the Pa. Turnpike. M-Sa 10 am-9 pm, Su 11 am-6 pm. [www.kingofprussiamall.com](http://www.kingofprussiamall.com). 160 N. Gulph Road, King of Prussia, Pa., 610.265.5727.

**PHILADELPHIA PREMIUM OUTLETS**—It's worth the trip to this upscale shopping destination, where 150 designer and high-end outlet stores offer discounts from 25 to 65 percent every day. For more savings, register online for the center's VIP Shopper Club. M-Sa 10 am-9 pm, Su 10 am-7 pm. [www.premiumoutlets.com/philadelphia](http://www.premiumoutlets.com/philadelphia). 18 W. Lightcap Road, Limerick, Pa., 610.495.9000.

**THE SHOPS AT LIBERTY PLACE**—This indoor, Center City complex for fashion, jewelry, housewares and more has 55 specialty boutiques and international eateries. Retailers include Bloomingdale's The Outlet Store, ALDO Shoes and J. Crew. Take in Philadelphia from One Liberty Observation Deck. M-Sa 9:30 am-7 pm, Su noon-6 pm. [www.shopsatliberty.com](http://www.shopsatliberty.com). 1625 Chestnut St., between Liberty I and Liberty II office towers, 215.851.9055. **Map 1, H5**

**THE SHOPS AT UNIVERSITY SQUARE**—On the University of Pennsylvania campus in University City, find a mélange of national and independent retailers—American Apparel, Urban Outfitters, Eastern Mountain Sports, Douglas Cosmetics and Penn Bookstore—plus top-notch dining options. M-F 8:30 am-8:30 pm, Sa till 5:30 am, Su noon-5 pm. [www.universitysquare.biz/shop.html](http://www.universitysquare.biz/shop.html). 34th through 38th streets, Chestnut to Spruce sts. **Map 1, C5/D6**

## Specialty Shops

**EYESITE**—Located near Rittenhouse Square, this gallery-style optical shop offers "museum-quality" prescription eyewear and sunglasses by independent makers around the world. Find frames made of wood, horn, even leather and stone. Custom work also available. Tu-F 10 am-6 pm, Sa till 5 pm. [www.eyesite-philadelphia.com](http://www.eyesite-philadelphia.com). 111 S. 18th St., 215.557.0757. **Map 1, G5**

**PHILLY AIDS THRIFT**—This nonprofit founded in 2005 sells an eclectic collection of donated items with proceeds going to local organizations involved in the fight against HIV/AIDS. M-Th 11 am-8 pm, F-Sa 11 am-9 pm, Su 11 am-7 pm. [www.phillyaidsthrift.com](http://www.phillyaidsthrift.com). 710 S. 5th St., 215.922.3186. **Map 1, K7**

**PLEASURE CHEST**—Since 1974, this adult boutique off Rittenhouse Square has been offering intimate toys and products (lubricants, harnesses, "Rabbits," lingerie, sensual novelties) for men and women with the help of discreet, knowledgeable and friendly staff. Tu-Sa 11 am-7 pm. [www.pleasurechestphilly.com](http://www.pleasurechestphilly.com). 2039 Walnut St., 215.561.7480. **Map 1, G5**

## Sporting Goods & Apparel

**MITCHELL & NESS**—The flagship store of this world-renowned sports-gear provider offers more than 1,600 authentic styles of vintage jerseys, hats, warm-ups, jackets and so much more. Sports fans should take a turn through the store just to see the museum-quality memorabilia. M-Sa 10 am-7 pm, Su 11 am-5 pm. [www.mitchellandness.com](http://www.mitchellandness.com). 1201 Chestnut St., 267.273.7622. **Map 1, I5**

**NOCTURNAL SKATEBOARDS**—One of the Philadelphia skate scene's go-to supply stops and hang-outs opened in 2000 by X Games gold medalist Kerry Getz. Skaters find clothes, shoes, decks, trucks, wheels and every manner of skate accessory. M-Th noon-8 pm, F noon-9 pm, Sa 11 am-9 pm, Su noon-6 pm. [www.nocturnalskateshop.com](http://www.nocturnalskateshop.com). 533 South Street, 215.922.3177. **Map 1, J7**

**SHIBE VINTAGE SPORTS**—Founded by local sports enthusiasts, this store features retro-style shirts and hats appealing to the fashion-forward sports fan. The retailer's Originals line utilizes the talents of local artists and screen printers. Worldwide shipping available. M-Sa 11 am-8 pm, Su till 6 pm. [www.shibevintagesports.com](http://www.shibevintagesports.com). 137 S. 13th St., 215.566.2511. **Map 1, I5**

# Galleries+Antiques



## Mercer Museum

Rising above the trees in pastoral Doylestown lies this unusual sight: a towering castle complete with dormers and peaked roofs, the likes of which belong in an H.P. Lovecraft story. Inside, find a blast to the past with tools, folk art and furnishings of American life before industrialization. Through April 15, "African American Quilts: From Traditional to Contemporary" explores the history and traditions of these gorgeous textiles. [www.mercermuseum.org](http://www.mercermuseum.org), 84 S. Pine St., Doylestown, Pa., 215.345.0210.

## Antiques Shops

**ANASTACIA'S ANTIQUES**—Anastacia's is brimming with affordably priced antiques and quirky collectibles of all kinds, from furnishings and lamps to dolls, books and jewelry. Staff occasionally takes shopping trips for merchandise during store hours so call in advance. Th-Sa noon-6:30 pm, Su noon-5 pm. [www.anastaciasantiques.com](http://www.anastaciasantiques.com) 617 Bainbridge St., 215.928.9111. **Map 1, J7**

**ANTIQUÉ SHOWCASE**—Find fine European furniture, lighting accessories and objets d'art at this charming antique shop located in the ritzy Rittenhouse neighborhood. M-Sa 10 am-6 pm. [www.antiquesthowspace.com](http://www.antiquesthowspace.com), 1625 Pine St., 215.545.0860. **Map 1, H6**

**ARCHITECTURAL ANTIQUES EXCHANGE**—Across 30,000 square feet of space in the Northern Liberties neighborhood, this vast warehouse stock a range of architectural antiques, from the late 1700s through the 1930s. Exciting items have been reclaimed from French castles and churches; others include mantels, doors, beds, carved furniture and ironwork. M-Sa 10 am-5 pm. [www.architecturalantiques.com](http://www.architecturalantiques.com), 715 N. Second St., 215.922.3669. **Map 1, K2**

**FREEMAN'S**—One of the premier auction houses for fine arts and antiques is also the nation's oldest. M-Th 9 am-5 pm, F 9 am-3 pm, special office hours during auction exhibitions. [www.freemansauction.com](http://www.freemansauction.com), 1808 Chestnut St., 215.563.9275. **Map 1, G5**

**GARDEN GATE ANTIQUES**—Another stop in Chestnut Hill, this two-story shop features a wide range of items from West African art to Steiff animals, including but not limited to vintage and antique furnishings, clothing, jewelry and books. M-Sa 11 am-5 pm, Su noon-5 pm. [www.bowmanch.com/property/gardengate](http://www.bowmanch.com/property/gardengate), 8139 Germantown Ave., 215.248.5190.

**KOHN & KOHN ANTIQUES**—Kohn & Kohn Antiques has been known for fine antiques in Philadelphia since 1932. Its inventory is broad with an emphasis on glass, furniture, porcelain and silver. Also check out the tobacciana collection, which includes cigarette cases, cigar cutters and elegant lighters. Open by appointment and by chance. [www.kohndankohnantiques.com](http://www.kohndankohnantiques.com), 1112 Pine St., 215.923.0432. **Map 1, I6**

**LAVENDER HILL**—Lavender Hill in Chestnut Hill caters to those who love decorating the home. Visitors can browse unique antique pieces as well as newer items made to look and feel old, from candles and brass lamps to dried flowers, frames, jewelry and soaps. Lots of great gift items here. Tu-Sa 11 am-5 pm, Su noon-4 pm. [www.facebook.com/Lavender-Hill-Home-246661762106742](http://www.facebook.com/Lavender-Hill-Home-246661762106742), 8121 Germantown Ave., 215.248.5591.

**M. FINKEL & DAUGHTER**—Opened in 1947 in an 1840s building on beautiful Antique Row, family-owned M. Finkel & Daughter continues to sell period antiques, 18th- and 19th-century furniture,

and a highly acclaimed collection of needlework and silk embroideries spanning the 17th to mid-19th centuries. Call for an appointment. [www.samplings.com](http://www.samplings.com), 936 Pine St., 215.627.7797. **Map 1, I6**

**NIEDERKORN ANTIQUE SILVER**—Open for more than 25 years, Niederkorn Antique Silver focuses on what its name implies: 19th- and 20th-century fine silver. Just off Rittenhouse Square, this tiny store brims with sterling Christmas ornaments, jewelry, tea sets and napkin rings, Judaica, desk accessories and books on the art of silversmithing. Tu-Th 11:30 am-7 pm, F-Sa 11:30 am-5:30 pm. [www.niederkornsilver.com](http://www.niederkornsilver.com), 244 South 22nd St., 215.567.2606. **Map 1, G6**

**THE PHILADELPHIA PRINT SHOP**—Pour over the impressive collection of more than 20,000 historical prints and antique maps from the 16th through the early-20th centuries. Those looking for an affordable piece of fine art will have luck here—many prints are priced under \$100. M-Sa 10 am-5 pm. [www.philaprintshop.com](http://www.philaprintshop.com), 8441 Germantown Ave., 215.242.4750.

## Art Galleries

**3RD STREET GALLERY**—In the heart of Old City's gallery district, 3rd Street Gallery features a diverse mix of artists working in various media. In operation since 1978, this artist-run cooperative is devoted to presenting a quality experience of visual arts, all the while encouraging risk and

There's a lot more going on this March. Visit us online: [wheretraveler.com](http://wheretraveler.com)

JANUARY 21 – MAY 6, 2018



**Magical & Real**  
HENRIETTE WYETH PETER HURD

Get tickets online at  
[MichenerArtMuseum.org](http://MichenerArtMuseum.org)



Organized by the James A. Michener Art Museum and the Roswell Museum and Art Center.



**Shellie Garber**  
Living in Paradise  
30 x 30, Acrylic

**Bluestone Fine Art Gallery**  
72 North 2nd Street • Philadelphia  
856.979.7588 • [bluestone-gallery.com](http://bluestone-gallery.com)

Complimentary Shipping  
within the United States

experimentation in their artists' works. W-Su noon-5 pm. [www.3rdstreetgallery.com](http://www.3rdstreetgallery.com), 45 N. Second St., 215.625.0993. **Map 1, K4**

**THE BAZEMORE GALLERY**—Located in Manayunk, this gallery features an array of artists inside a space whose design is based on the five elements of Feng Shui. Find pop imagery, abstract landscapes, glass blown artwork and more, plus, rotating exhibits and The Living Wall, an indoor sustainable planting panel. W-Su noon-7 pm. [www.thebazemoregallery.com](http://www.thebazemoregallery.com), 4339 Main St., 215.482.1119.

**BLUESTONE FINE ART GALLERY**—This gallery features original works by contemporary and traditional artists in a range of mediums, including painting, ceramics and sculptures. See the work of well-known and emerging local artists. Each month new exhibitions kick off during Philadelphia's First Fridays, which draws hundreds of art lovers to the neighborhood. Tu-F 10 am-5 pm, Sa noon-4 pm. [www.bluestone-gallery.com](http://www.bluestone-gallery.com), 72 N. Second St., 856.979.7588. **Map 1, K4**

**CALDERWOOD GALLERY**—Owners Gary and Janet Calderwood showcase their personal art collection of 20th-century design and fine photography across 30,000 square feet in the heart of the Avenue of the Arts. Find museum-quality French Art Deco by Ruhlmann, Arbus, Dufrene and others, Mid-century Modern decorative arts and more. Gary Calderwood's photography presents a visual history of the 20th century. Ships internationally. M-F 11 am-5 pm, Sa-Su by appointment. [www.calderwoodgallery.com](http://www.calderwoodgallery.com), 242 Geiger Road, 215.546.5357.

**CARRÉ D'ARTISTES**—This art gallery is a leader in affordable, contemporary art, selling world-class, original paintings and specializing in a wide variety of artistic styles, from figurative and abstract to landscape, Pop and street art, all created by a vast collection of internationally known artists. Framing services available. Daily 11 am-8 pm, extended hours on First Fridays. [www.carredartistesphilly.com](http://www.carredartistesphilly.com), 104 S. 13th St., 215.735.2800. **Map 1, I5**

**THE CENTER FOR ART IN WOOD**—This not-for-profit museum, gallery and research center focuses on woodworks, showcasing all methods of wood art-making including turned and carved sculptures by renowned artists and craftsmen. Tu-Sa 10 am-5 pm. [www.centerforartinwood.org](http://www.centerforartinwood.org), 141 N. Third St., 215.923.8000. **Map 1, K4**

**CERULEAN ARTS GALLERY & STUDIO**—Just off of North Broad Street, the gallery exhibits eclectic decorative and fine art while the studio offers art instruction and weekend workshops. In addition to the displayed works of more than 100 artists, the gallery also proffers handmade wares from an additional 100 artisans. W-F 10 am-6 pm, Sa-Su noon-6 pm. [www.ceruleanarts.com](http://www.ceruleanarts.com), 1355 Ridge Ave., 267.514.8647. **Map 1, H2**

**THE CLAY STUDIO**—This gallery and educational facility promotes the craft of ceramic arts through artist residencies, studio space, gift shop, educational and outreach programs and its permanent collection. The Clay Studio is dedicated to providing programs for all artists, emerging and expert. M-Sa 11 am-6 pm, Su noon-6 pm. [www.theclaystudio.org](http://www.theclaystudio.org), 139 N. Second St., 215.925.3453.

**F.A.N. GALLERY**—Located in a 1700's Colonial building in Old City, this gallery features emerging and established artists in the classic tradition of American painting. The first floor features a different artist each month, with many from right here in Philadelphia. The second floor displays group exhibitions, ranging from figurative to landscape and still-life. W-Su noon-6 pm. [www.thefangallery.com](http://www.thefangallery.com), 221 Arch St., 215.922.5155. **Map 1, K4**

**FLEISHER ART MEMORIAL**—In addition to offering a rotating display of wide-ranging works by local artists, this gallery also hosts an extensive catalog of inexpensive workshops and free classes for all skill levels. M-F 10 am-5 pm. [www.fleisher.org](http://www.fleisher.org), 719 Catharine St., 215.922.3456. **Map 1, J7**

**FLEISHER/OLLMAN GALLERY**—Founded in 1952, Fleisher/Ollman Gallery earned its reputation as a premier source of self-taught artists, and today it exhibits contemporary artists who reflect the influence of the self-taught, including Martin Ramirez, Bill Traylor and Tristin Lowe. Tu-F 10:30 am-5:30 pm, Sa noon-5 pm. [www.fleisher-ollmangallery.com](http://www.fleisher-ollmangallery.com), 1216 Arch St., Suite 5A, 215.545.7562. **Map 1, H6**

**GRAVERS LANE GALLERY**—Located in Chestnut Hill, this edgy, contemporary art gallery exhibits works by both established and emerging artists from around the world. Its media spectrum is broad, including painting, sculpture, fiber and paper. M-Sa 10 am-6 pm, Su noon-5 pm. [www.graverslane-gallery.com](http://www.graverslane-gallery.com), 8405 Germantown Ave., 215.247.1603.

**INLIQUID ART & DESIGN**—This educational resource and exhibition gallery has a mission to serve Philadelphia's visual artists by featuring these creatives on its free public website. There, find portfolios and credentials for more than 280 artists, as well as "real world" exhibitions. Visit the website for full exhibit location and locations. [www.inliquid.org](http://www.inliquid.org), 1400 N. American St., 215.235.3405.

**JAMES OLIVER GALLERY**—This unique, contemporary loft-style gallery, nestled in the heart of the Historic District, features local, national and international artists in the disciplines of painting, mixed media, photography and installation works that have been recognized by notables such as NPR and Huffington Post. W-F 5 pm-8 pm, Sa 1 pm-8 pm or by appointment. [www.jamesolivergallery.com](http://www.jamesolivergallery.com), 723 Chestnut St., 4th floor, 267.918.7432. **Map 1, J5**

**KAMIN GALLERY**—Housing books and objects commemorating the lives of noted Philadelphians including Benjamin Franklin, Marian Anderson and Tom Phillips, this repository also offers a fascinating gallery on the University of Pennsylvania campus, inside the Van Pelt-Dietrich Library. M-F 9 am-5 pm, Sa-Su by appointment. [www.library.upenn.edu](http://www.library.upenn.edu), 3420 Walnut St., 1st floor, 215.898.7555. **Map 1, D5**

**MUSE GALLERY**—This artist-run Old City gallery encompasses a range of styles including abstract, conceptual and representational. Each month, the gallery highlights a different artist's work in varying disciplines, creating a new experience for each visit. W-Su noon-5 pm. [www.musegalleryphiladelphia.com](http://www.musegalleryphiladelphia.com), 52 N. Second St., 215.627.5310. **Map 1, K4**

**MOUNT AIRY CONTEMPORARY**—Husband-and-wife artists Colin Keefe and Andrea Wohl Keefe run this charming exhibition space in the carriage house behind their residence. Here, find not only their own works, but also those of other artists in the region. Call for hours. [www.mountairycontemporary.com](http://www.mountairycontemporary.com), 25 W. Mt. Airy Ave., 267.270.2787.

**TGIF!** On the first Friday of every month, art galleries and shops in Philly's Old City neighborhood stay open late, hosting new exhibits and special events.

# Museums+Attractions



## Carpenter's Hall

This site is where the First Continental Congress met in 1774 and is home to Franklin's Library Company, The American Philosophical Society, and the First and Second Banks of the United States. Inside, see the very chairs the founding fathers sat in to debate the birth of the nation. [www.carpentershall.org](http://www.carpentershall.org). 320 Chestnut St. 215.925.0167. Map 1, K5



## Philadelphia History Museum at the Atwater Kent

Eight renovated galleries on two floors exhibit items from this site's holdings of more than 100,000 objects, including gems like the wampum belt given to William Penn by the Lenape people and Joe Frazier's Everlast boxing gloves. [www.philadelphiahistory.org](http://www.philadelphiahistory.org). 15 S. 7th St. 215.685.4830. Map 1, J5



## The Athenaeum of Philadelphia

Founded in 1814, this collection is a gem for architecture, design and history buffs. Until April 13, "Philadelphia: Finding the Hidden City" reveals the essence of Philly through eye-opening photos. [www.philaathenaem.org](http://www.philaathenaem.org). 219 S. 6th St., 215.925.2688. Map 1, J6

## Admission/Discount Passes

**CITYPASS**—This nine-day pass (valid beginning with first day of use) offers savings of up to 44 percent off admission to attractions, including The Franklin Institute, One Liberty Observation Deck, Philly Trolley Works and The Big Bus Company, plus the Philadelphia Zoo or Adventure Aquarium. \$55; children (ages 2-12) \$35. [www.citypass.com](http://www.citypass.com). 888.330.5008.

## Amusement Park

**ARNOLD'S FAMILY FUN CENTER**—One of the largest indoor fun centers in the U.S. features electric go-karts, bumper cars, crazy cars, a bounce zone, laser tag, black-light mini golf and bowling lanes. Cafe, bistro and bar. Hours vary by season. [www.arnoldsffc.com](http://www.arnoldsffc.com). 2200 West Drive, Oaks, Pa., 610.666.0600.

## Art Museums

**FABRIC WORKSHOP AND MUSEUM**—This nonprofit pushes the frontiers of contemporary art by supporting artists who work with experimental materials. Design enthusiasts find plenty to see here, from an extensive permanent collection to special exhibitions, plus lectures and tours. Don't miss the design-driven gift shop. "Process and Practice: 40 Years of Experimentation," through March 5. Free. M-F 10 am-6 pm, Sa-Su noon-5 pm. [www.fabricworkshopandmuseum.org](http://www.fabricworkshopandmuseum.org). 1214 Arch St., 215.561.8888. Map 1, I4

## INSTITUTE OF CONTEMPORARY ART—

On the University of Pennsylvania campus, this modern site features cutting-edge exhibits of contemporary and provocative visual art, plus artist talks, lectures, films and tours. "Cary Leibowitz: Museum Show" and "Broadcasting: EAI at ICA," both through March 23. "Tag: Proposals on Queer Play and the Ways Forward," through Aug. 12. Free. W 11 am-8 pm, Th-F till 6 pm, Sa-Su till 5 pm. [www.icaphila.org](http://www.icaphila.org). 118 S. 36th St., 215.898.7108. Map 1, C5

**JAMES A. MICHENER ART MUSEUM**—This independent nonprofit museum features the art and culture of Bucks County, Pa., and is home to the largest publicly held collection of Pennsylvania Impressionist paintings. "Virtually Rudy: New Dimensions in Sculpture," through April 8; "Magical & Real: Henriette Wyeth and Peter Hurd, A Retrospective," through May 6. \$8-\$18. Tu-F 10 am-4:30 pm, Sa 10 am-5 pm, Su noon-5 pm. [www.michenermuseum.org](http://www.michenermuseum.org). 138 S. Pine St., Doylestown, Pa., 215.340.9800.

**PENNSYLVANIA ACADEMY OF THE FINE ARTS**—This National Historic Landmark houses America's first art museum and art school, as well as one of the world's largest collections of American art, including works by Charles Willson Peale, Thomas Eakins, Mary Cassatt and Maxfield Parrish. "Beyond Boundaries: Feminine Forms," through March 18; "Chuck Close Photographs," through April 8; "Nick Cave: Rescue," through May 13. \$8-\$15. Tu and Th-F

10 am-5 pm, W 10 am-9 pm, Sa-Su 11 am-5 pm. [www.pafa.org](http://www.pafa.org). 118-128 N. Broad St., 215.972.7600. Map 1, H4

**PHILADELPHIA MUSEUM OF ART**—At this sprawling world-famous museum, see major works of fine and decorative art from across the globe, including a number of works by Philadelphia artists. Many visitors arrive just to run up the museum's front steps à la Rocky Balboa, but additional activities include guided tours, lectures, concerts, films, family programming, and the weekly Friday night "Art After 5" with live music and cocktails. "Patricia Urquiola: Between Craft and Industry," through March 4; "Keith Smith at Home," through July 8. \$14-\$20 (good for two consecutive days to the main building, Perelman Building, the Rodin Museum, and Historic Houses Mt. Pleasant and Cedar Grove). Complimentary shuttle available between main building, Perelman buildings and Rodin Museum. Pay what you wish on first Sunday of month and every Wednesday after 5 pm. Tu, Th and Sa-Su 10 am-5 pm; W and F 10 am-8:45 pm. [www.philamuseum.org](http://www.philamuseum.org). 2600 Benjamin Franklin Parkway, 215.763.8100. Map 1, E2

**PHILADELPHIA MUSEUM OF ART'S PERELMAN BUILDING**—Across the street from Philadelphia Museum of Art's main building, this annex highlights collections of costumes, textiles, photos and contemporary design. \$14-\$20 (good for two consecutive days to the main building, Perelman Building, the Rodin Museum, and Historic Houses Mt. Pleasant and Cedar Grove). Free shuttle between

There's a lot more going on this March. Visit us online: [wheretotraveler.com](http://wheretotraveler.com)

**TREASURE TROVE** Among the holdings at the Free Library of Philadelphia (page 22)? 4,000-year-old clay tablets and more than 13,000 musical compositions.

main building, Perelman Building and Rodin Museum. Tu-Su 10 am-5 pm. [www.philamuseum.org](http://www.philamuseum.org). 2525 Pennsylvania Ave., 215.763.8100. Map 1, E2

**RODIN MUSEUM**—The largest collection of the sculptor's work outside Paris includes casts of his most famous works, including "The Thinker" and "The Gates of Hell." The renovated grounds include lush gardens and a neoclassical Beaux Arts building. Free tours W-M at noon. \$7-\$10; \$20, good for two consecutive days to the main building, Perelman Building, the Rodin Museum and historic houses Mt. Pleasant and Cedar Grove. W-M 10 am-5 pm. [www.rodinmuseum.org](http://www.rodinmuseum.org). 2151 Benjamin Franklin Parkway, 215.763.8100. Map 1, F3

**WOODMERE ART MUSEUM**—Celebrate Philadelphia's artistic legacy inside a 19th-century stone Victorian mansion in the city's northwestern neighborhood of Chestnut Hill. "Jerry Pinkney: Martin Luther King, Jr. and Great American Heroes," through April 8; "Charles Santore: Fifty Years of Art and Storytelling," through May 13; "Elizabeth Osborne: Animal Paintings and Watercolors," through June 24. \$7-\$10. Su and Tu-Th 10 am-5 pm, F 10 am-8:45 pm, Sa 10 am-6 pm. [www.woodmereartmuseum.org](http://www.woodmereartmuseum.org). 9201 Germantown Ave., 215.247.0476.

## Attractions

**ADVENTURE AQUARIUM**—Get up close and personal to sea creatures and wildlife in nearly 200,000 square feet of space at this aquarium, located just across the Delaware River on the Camden waterfront. See hippos in the West African River Experience, watch penguins swim on Penguin Island, and marvel at sharks in a 40-foot walkthrough tunnel. Neighbors Camden Children's Garden. \$21-\$28, under 2 free. Daily 10 am-5 pm. [www.adventureaquarium.com](http://www.adventureaquarium.com). 1 Riverside Drive, Camden, NJ, 856.365.3300. Map 1, 4K

**BATTLESHIP NEW JERSEY**—One of the Navy's most decorated warships built here in Philly remains moored at the Camden Waterfront. Guided tours: \$17-\$21.95. Daily 9:30 am-3 pm. [www.battleshipnewjersey.org](http://www.battleshipnewjersey.org). 100 Clinton St., Camden, NJ, 866.877.6262. Map 1, K4

**CITY HALL AND TOWER**—Philadelphia's center of city government is the world's tallest masonry structure and the country's largest municipal building. Tours offered daily. **Interior & tower:** \$15.25, senior/military \$10.25, student/youth \$8.25, children (ages 3 and under) free. M-F 12:30 pm. **Tower only:** \$8.25, seniors/military \$6.25, students/youth \$4.25, children (ages 3 and under) free. M-F 9:30 am-4:15 pm, and some Sa. 11 am-4 pm. [www.phlvisitorcenter.com/cityhall](http://www.phlvisitorcenter.com/cityhall). Broad and Market sts., 267.514.4757. Map 1, H5

**DREAM GARDEN MOSAIC**—Visitors seek out this beautiful, 15-by-49-foot mosaic inside the Curtis Center, the elegant building that once housed the offices of the Ladies Home Journal and the Saturday Evening Post. Completed in 1916, the mosaic was created by Louis Comfort Tiffany in conjunction with Philadelphia artist Maxfield Parrish (and based on Parrish's painting "The Dream Garden"). Free. M-F 8 am-6 pm, Sa 10 am-1 pm. [www.visitphilly.com/music-art/philadelphia/dream-garden/](http://www.visitphilly.com/music-art/philadelphia/dream-garden/). 601-645 Walnut St., 215.238.6450. Map 1, J5

**EAKINS OVAL**—Visible from anywhere on the Benjamin Franklin Parkway, Eakins Oval is especially breathtaking from the steps of the Philadelphia Museum of Art. The focal point is the Washington

(FROM LEFT) ©JAMESPHOTO/WIKIMEDIA COMMONS; ©J. FUSCO/VISIT PHILADELPHIA®; ©JOSEPH E. B. ELLIOTT

Monument fountain, with a bronze-and-granite statue of George Washington on his horse capping a fountain decorated with animals and plants native to the country. [www.theovalphl.org](http://www.theovalphl.org), 24th St. and Benjamin Franklin Parkway, 215.422.4169. **Map 1, F3**

**ELFRETH'S ALLEY**—The oldest continuously occupied residential street in the U.S. features 18th- and 19th-century private homes. Visitors stroll the cobblestoned way named for Jeremiah Elfreth, taking in such quaint details as brass doorknobs, small-paned windows with flower boxes and brickwork. Find the Elfreth's Alley Museum in No. 126 and a gift shop and information center in No. 124. The museum offers guided tours F-Su noon-5 pm, in season (\$5). [www.elfrethsalley.org](http://www.elfrethsalley.org). Located off Second St., between Race and Arch sts., 215.627.8680. **Map 1, K4**

**INDEPENDENCE HALL**—Built for the Pennsylvania legislature, Independence Hall became famous as the "Birthplace of the United States" after the Declaration of Independence was adopted and the U.S. Constitution was drafted here. Free, timed tickets available at the Independence Visitor Center (Sixth and Market streets). Daily 9 am-5 pm. [www.nps.gov/inde/playourvisit/independence-hall.htm](http://www.nps.gov/inde/playourvisit/independence-hall.htm). Chestnut St., between Fifth and Sixth sts., 215.965.2305. **Map 1, J5**

**INDEPENDENCE NATIONAL HISTORICAL PARK**—This park spans 20 city blocks (more than 55 acres) and includes Colonial sites like Independence Hall, Christ Church, Carpenters' Hall, Old City Hall and the Benjamin Franklin Museum, not to mention the Liberty Bell. The Independence Visitor Center at Sixth and Market streets distributes free tickets for Independence Hall, as well as maps and brochures in several languages. [www.nps.gov/inde](http://www.nps.gov/inde). 215.965.2305. **Map 1, K5**

**LIBERTY BELL CENTER**—The 2,080-pound bell with its famous crack rang on July 8, 1776 to announce the first public reading of the Declaration of Independence. These days, the world's most famous bell is preserved here across from Independence Hall. Free. Daily 9 am-5 pm. [www.nps.gov/inde](http://www.nps.gov/inde). Sixth and Market sts., 215.965.2305. **Map 1, J5**

**OLD CITY HALL**—Check out the building that was constructed to be Philadelphia's second City Hall; from the time it was completed it served as the home of the U.S. Supreme Court from 1791 to 1800, when it—and the nation's capital—moved to Washington. John Jay was Chief Justice here. Today's visitors can explore a restored courtroom. The Liberty Bell stands right outside. Free. Daily 9 am-5 pm. [www.nps.gov/inde/playourvisit/old-city-hall.htm](http://www.nps.gov/inde/playourvisit/old-city-hall.htm). Fifth and Chestnut sts., 215.965.2305. **Map 1, K5**

**PHILADELPHIA ZOO**—America's first zoo is a Victorian-landscaped, 42-acre area housing more than 1,300 animals in naturalistic habitats. Attractions include the Zoolaboo (offering rides up to 400 feet with citywide views for an extra fee), a children's zoo, a butterfly habitat and more. \$16-\$23. Daily 9:30 am-4 pm. [www.philadelphiazoo.org](http://www.philadelphiazoo.org). 3400 W. Girard Ave., 215.243.1100. **Map 1, C2**

**PHILADELPHIA'S MAGIC GARDENS**—Created by mosaic artist Isaiah Zagar, this mesmerizing, maze-like "garden" is actually an outdoor installation complemented by indoor gallery space that was built from glass and ceramic fragments, discarded wheels, bottles and other ephemera. \$5-\$10. W-M 11 am-6 pm. [www.phillymagicgardens.org](http://www.phillymagicgardens.org). 1020 South St., 215.733.0390. **Map 1, I7**

## Historic Homes

**BETSY ROSS HOUSE**—The Colonial-style historic home of America's famous flag maker features period furnishings and Betsy Ross' own personal belongings, plus an upholstery shop and special exhibitions. \$4-\$7. Daily 10 am-5 pm. [www.historicphiladelphia.org](http://www.historicphiladelphia.org). 239 Arch St., 215.629.4026. **Map 2, D3**

**DECLARATION HOUSE (GRAFF HOUSE)**—This reconstruction of the house where Thomas Jefferson wrote the Declaration of Independence features exhibits and a short film on the drafting of the historic document. Free. Call for hours. [www.nps.gov/inde](http://www.nps.gov/inde). 701 Market St., 215.965.7676. **Map 2, A5**

**FAIRMOUNT PARK HOUSES**—These 18th- and 19th-century mansions with period furnishings are considered some of the finest examples of early American homes. Tours are offered by the Park House Guides. \$5-\$8, children (ages 6-12) free. [www.parkcharms.com](http://www.parkcharms.com). Lemon Hill, Sedgley and Lemon Hill drives, 215.232.4337; Mount Pleasant, Mount Pleasant Drive, 215.763.8100; Laurel Hill, Randolph and East Edgely drives, 215.235.1776; Woodford, 33rd and West Dauphin sts., 215.229.6115; Strawberry Mansion, Strawberry Mansion Drive, 215.228.8364; Cedar Grove, Lansdowne and Cedar Grove drives, 215.763.8100; Sweetbriar, Sweetbriar Drive, 215.222.1333.

## Historic Religious Sites

**CATHEDRAL BASILICA OF SAINTS PETER AND PAUL**—Opened in 1864 and designed by architect Napoleon LeBrun, this majestic domed cathedral is modeled after the Lombard Church of St. Charles (San Carlo al Corso) in Rome. Visitors can admire the Roman-Corinthian architecture, the impressive copper dome and the breathtaking interior. Cathedral Basilica ambassadors are available during open hours to assist visitors and give tours. M-F 7:30 am-5 pm, Sa 9 am-6:30 pm, Su 8 am-7:30 pm. [www.cathedralphila.org](http://www.cathedralphila.org). 18th St. and Benjamin Franklin Parkway, 215.561.1313. **Map 1, G4**

**CHRIST CHURCH**—Many founding fathers prayed at this Episcopal church, founded in 1695. Services: Su 9 am and 11 am. M-Sa 9 am-5 pm, Su 1 pm-5 pm. Free, but \$5 donation suggested. [www.christchurchphila.org](http://www.christchurchphila.org). Second St., between Market and Arch sts., 215.922.1695. **Map 1, K5**

**CHRIST CHURCH BURIAL GROUND**—Benjamin Franklin rests at this Colonial-era cemetery—his grave is visible through the gate at Fifth and Arch sts. Other notables include four signers of the Declaration of Independence. \$2, children (ages 5-16) \$1. Guided tours depart 11 am-3:30 pm daily (weather permitting); \$7, youth (ages 5-16) \$3, groups \$30. M-Sa 10 am-4 pm, Su noon-4 pm. [www.christchurchphila.org](http://www.christchurchphila.org). Fifth and Arch sts., 215.922.1695. **Map 1, K4**

**CONGREGATION MIKVEH ISRAEL**—Founded in 1740, this synagogue houses the oldest Jewish congregation in Philadelphia and the second-oldest congregation in the United States. Archives and tours by appointment. Call for hours. [www.mikvehisrael.org](http://www.mikvehisrael.org). 44 N. Fourth St., 215.922.5446. **Map 2, C4**

## Library/Cultural Center

**FREE LIBRARY OF PHILADELPHIA:**  
**CENTRAL LIBRARY**—Holdings here run the gamut from 4,000-year-old clay tablets to a collection of orchestral music that numbers more than 13,000

compositions and, of course, lots of books. Author events are frequent, as notable writers often make this a stop on national book tours. M-Th 9 am-9 pm, F till 6 pm, Sa till 5 pm, Su 1-5 pm. [www.freelibrary.org](http://www.freelibrary.org). 1901 Vine St., 215.686.5322. **Map 1, G3**

## Special Interest Museums

**THE AFRICAN AMERICAN MUSEUM IN PHILADELPHIA**—This museum is the first built by a major United States city to house and interpret the life and work of African-Americans. \$10-\$14. Th-Sa 10 am-5 pm, Su noon-5 pm. [www.aammuseum.org](http://www.aammuseum.org). 701 Arch St., 215.574.0380. **Map 1, J4**

**AMERICAN TREASURE TOUR**—Guides take visitors on a tram ride through the museum to explore an extensive collection of Americana, from antiques to pop culture items. General admission Th-Sa 10 am-3 pm. \$12.50, children (ages 3-12) \$5, under 3 free. By reservation only: Custom tours (4+ people) M-F; Group tours (15+) M-Sa. Check website for details. [www.americanstreasuretour.com](http://www.americanstreasuretour.com). 122 Mill Road, Oaks, Pa., 866.970.8687.

**BENJAMIN FRANKLIN MUSEUM**—Part of Independence National Historical Park, the Benjamin Franklin Museum explores the life and legacy of this notable figure from American history. Visitors see artifacts, computer animations and interactive displays. \$5, youth (ages 4-16) \$2. Daily 9 am-5 pm. [www.nps.gov/inde](http://www.nps.gov/inde). Market Street between Third and Fourth sts., 215.965.2305. **Map 1, K5**

**DEPACE SPORTS MUSEUM**—This museum houses rare items such as the trunks worn by Muhammad Ali and Joe Frazier during their 1971 boxing match, a Babe Ruth road jersey c.1927-1929 and the School Sisters of Notre Dame Honus Wagner T-206 card. Free (donations suggested). Tu-Th noon-5 pm and Fri-Sa noon-9 pm. [www.depacemuseum.com](http://www.depacemuseum.com). 765 Haddon Ave., Collingswood, NJ, 856.833.5133.

**THE FRANKLIN INSTITUTE**—The city's celebrated, family-friendly science museum explores the history and future of science through hands-on exhibits such as "Your Brain," "Changing Earth," "Electricity" and even a walkthrough "Giant Heart." IMAX theater. "Terra Cotta Warriors," through **March 4**. \$20, children (ages 3-11) \$16. IMAX add on \$6. See website for special exhibition and escape room pricing (advance purchase recommended). Daily 9:30 am-5 pm. [www.fi.edu](http://www.fi.edu). 222 N. 20th St., 215.448.1200. **Map 1, G4**

**NATIONAL CONSTITUTION CENTER**—Located just two blocks from Independence Hall and the Liberty Bell, this dynamic and modern museum tells the story of the U.S. Constitution through interactive and multimedia exhibits. \$11-\$14.50. M-F 9:30 am-5 pm, Sa 9:30 am-6 pm, Su noon-5 pm. [www.constitutioncenter.org](http://www.constitutioncenter.org). 525 Arch St., Independence Mall, 215.409.6600. **Map 1, K4**

**NATIONAL LIBERTY MUSEUM**—Celebrate America's heritage of freedom and achievement at galleries honoring local, national and international defenders of liberty. Exhibits include "Welcome to Liberty Gallery," "Voyage to Liberty" and "Heroes From Around the World." Don't miss the work of glass artist Dale Chihuly. \$2-\$7; \$15 family pass. Check website for seasonal hours. [www.libertymuseum.org](http://www.libertymuseum.org). 321 Chestnut St., 215.925.2800. **Map 1, K5**

**NATIONAL MUSEUM OF AMERICAN JEWISH HISTORY**—At this Smithsonian affiliate, visitors explore the history of Jews in America through exhibits featuring more than 1,000 artifacts, plus

**NATIONAL LIBERTY MUSEUM**

321 Chestnut St., Philadelphia, PA 19106  
Hours: 10am-5pm, seven days a week  
215-925-2800 \* [www.libertymuseum.org](http://www.libertymuseum.org)

Great Museum Store too!

Discover Philadelphia's "Hidden Gem"

21-ft. "Flame of Liberty" by Dale Chihuly

Where to Eat, Shop, Play and Stay Is Just a Touch Away

Put the power of Where™ in the palm of your hand. Our Where Traveler City Guide app gives you instant access to thousands of hand-picked recommendations for things to do and places to go in destinations all over the world. Download it today for iPhone and Android.

Available on the Google play and App Store.

films and interactive displays that allow visitors to contribute their own stories. "Leonard Bernstein: The Power of Music," ongoing. \$13-\$15, children under 13 free. W-F 10 am-5 pm, Sa-Su till 5:30 pm. [www.nmahj.org](http://www.nmahj.org). Corner of 5th and Market sts., 215.923.3811. **Map 1, K5**

**PENN MUSEUM**—Founded in 1887, this institution exhibits an internationally acclaimed collection of archeological and anthropological artifacts from all over the world. "Bearing Witness: Four Days in West Kingston," through **July 15**. \$10-\$15. Tu-Su 10 am-5 pm, first Wednesdays 10 am-8 pm. [www.penn.museum](http://www.penn.museum). 3260 South St., 215.898.4000. **Map 1, D6**

**PLEASE TOUCH MUSEUM**—Located in the gorgeously renovated Memorial Hall in Fairmount Park, this children's museum is dedicated to enriching the lives of youngsters by providing learning opportunities through play. Hands-on experiences include "Wonderland" (hedge maze and Hall of Mirrors), "Flight Fantasy" (build and launch rockets), "River Adventures" (mini Schuylkill River). "Jim Henson's Sid the Science Kid: The Super-Duper Exhibit," through **May 6**. \$19. M-Sa 9 am-5 pm, Su 11 am-5 pm. [www.pleasetouchmuseum.org](http://www.pleasetouchmuseum.org). 4231 Avenue of the Republic, 215.581.3181. **Map 1, B4**

## Observatories & Lookouts

**ONE LIBERTY OBSERVATION DECK**—This site offers 360-degree vistas of the city and beyond. On clear days, views extend to New Jersey and Delaware to the east, past University City to the west, down to Philly's stadiums to the south, and up to the neighboring suburbs to the north. High-tech touch-screens let visitors zoom in. Guided tours (free with admission) M-F at 11 am and 3 pm, Sa-Su at 11 am, 1 pm and 3 pm, plus self-guided tours. \$9-\$19. Daily 10 am-8 pm. [www.phillyfromthetop.com](http://www.phillyfromthetop.com). 1650 Market St., 215.561.3325. **Map 1, H5**

**TOP OF THE TOWER**—Floor-to-ceiling windows and open-air patios offer a bird's eye view of the Cathedral Basilica of Saints Peter and Paul, Logan Square, Eakins Oval and the Benjamin Franklin Parkway. A top-notch dining program also makes the tower a popular spot for brunch. [www.topofthetower.com](http://www.topofthetower.com). 1717 Arch St., 215.567.8787.

## Parks & Nature

**PENNSYLVANIA HORTICULTURAL SOCIETY**—The organizers of the annual Philadelphia International Flower Show (**March 3-11**) host educational exhibitions and lectures in their Center City headquarters. Visit website or call weekdays from 9 am-5 pm to find out about exclusive events like tree and garden care classes, green roof tours and garden festivals. [www.phsonline.org/events](http://www.phsonline.org/events). 100 N. 20th St., 215.988.8800. **Map 1, G4**

**LONGWOOD GARDENS**—This horticultural paradise has 1,050 acres of gardens, woodlands, meadows and 20 indoor gardens, plus an extraordinary "Nature's Castles" tree house exhibit. Frequent live musical performances. Check website for schedule. "Orchid Extravaganza," through **March 25**. \$12-\$23. Daily 9 am-6 pm. [www.longwoodgardens.org](http://www.longwoodgardens.org). 1001 Longwood Road, Kennett Square, Pa., 610.388.1000.

# Dining



**Wm. Mulherin's Sons**  
This beautifully renovated Fishtown spot preserves all the rustic charm of the whiskey blending and bottling facility it once housed in 1890, but with modern comforts like large windows letting in plenty of natural light and even a roaring fireplace. The food hits the right note, too, with blistered pizzas like one topped with smoky speck and a runny egg (here) and pastas that would make *nonna* come back for more. [www.wmmulherinssons.com](http://www.wmmulherinssons.com). 1355 N. Front St., 215.291.1355.

## Avenue of the Arts

**AQIMERO—New Latin.** Inside the lobby of the iconic Ritz-Carlton Philadelphia, across from City Hall, acclaimed chef Richard Sandoval serves up everything from sushi and ceviche to sustainably caught seafood creations with a Latin accent. B & D (Daily), L (M-F). [www.richardsandoval.com/aqimero](http://www.richardsandoval.com/aqimero). 10 Avenue of the Arts, 215.523.8200. \$\$\$ Map 1, H5

**MORTON'S, THE STEAKHOUSE—Steak.** An extensive wine selection is just a bonus of this signature Chicago steakhouse experience. Wet-aged prime beef broiled Midwestern-style makes for hearty, large portions, but also try pork, lamb and veal chops, as well as tasty seafood offerings. D (Daily). [www.mortons.com](http://www.mortons.com). 1411 Walnut St., 215.557.0724. \$\$\$ Map 1, H5

**VALANNI—Mediterranean.** Sleek yet laid-back, this neighborhood spot is a few blocks from the Avenue of the Arts. Tuck into modern Medi-Latin entrees and appetizers like spicy pulled chicken empanadas, lamb sliders and paella. D (Daily), Br (Su). [www.valanni.com](http://www.valanni.com). 1229 Spruce St., 215.790.9494. \$\$\$ Map 1, I6

**VOLVER—American.** Volver is Spanish for "to return," and with this high-class restaurant, chef Jose Garces does just that, revisiting his favorite culinary experiences from around the world. The diverse, seasonal, and often locally sourced menu features some of the most innovative dishes in the city. D (W-Su). [www.volverrestaurant.com](http://www.volverrestaurant.com). 300 S. Broad St., 215.670.2303. \$\$\$ Map 1, H6

**XIX (NINETEEN)—American.** For a special evening, take the elevator to the 19th floor of the Hyatt Philadelphia at The Bellevue. Settle in beneath the restaurant's spectacular pearl chandelier, or enjoy a meal in the more relaxed cafe space. L (M-F), D (Daily), Br (Su). [www.nineteenrestaurant.com](http://www.nineteenrestaurant.com). Broad and Walnut streets, 215.790.1919. \$\$\$ Map 1, H5

## Center City & Rittenhouse

**BAOLOGY—Taiwanese.** Husband-and-wife team, Judy Ni and Andy Tessier's first restaurant serves up fast-casual street food with a roster of ingredients that changes with the season. On the menu, find Ni's childhood favorites the way her grandmother made: Berkshire pork, shrimp and spinach potstickers; Taiwanese free-range fried chicken; wild-caught shrimp ruen bings (like a mini burrito). L (M-F), D (W-F). No phone. [www.baology.com](http://www.baology.com). 1829 John F. Kennedy Blvd. \$ Map 1, G4

**BAR BOMBÓN—Vegan.** Like the rest of the items on the menu here, the Puerto Rican empanadas and Venezuela-influenced arepas include only veggies. If time is tight, order tacos and stuffed plantains to go from the convenient takeout window. L, D (Daily). [www.barbombon.com](http://www.barbombon.com). 133 S. 18th St., 267.606.6612. \$\$ Map 1, G6

There's a lot more going on this March. Visit us online: [wheretraveler.com](http://wheretraveler.com)

**BUTCHER AND SINGER—Steak.** This stunning steak and chop house from Stephen Starr has a modern supper-club vibe, thanks to 28-foot-high ceilings, seductive leather booths, bold draperies and two magnificent chandeliers. It's a glam setting for tucking into Starr's top-notch steaks and chops. L (M-F), D (Daily). [www.butcherandsinger.com](http://www.butcherandsinger.com). 1500 Walnut St., 215.732.4444. \$\$\$ Map 1, H5

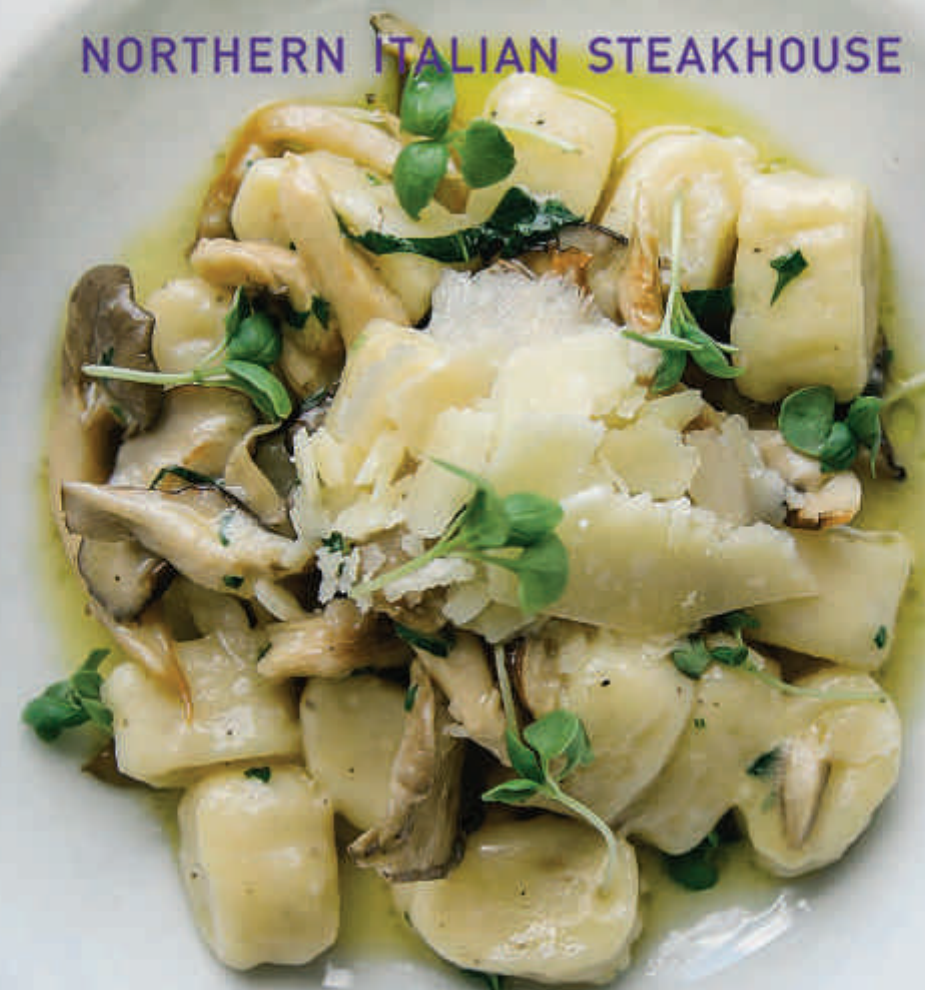
**DAVIO'S NORTHERN ITALIAN STEAKHOUSE—Steak.** On the second floor of the historic Provident Bank Building, Davio's serves Brandt Beef Steaks, veal chops and seafood beneath soaring 24-foot ceilings. B, L (M-F), D (Daily), Br (Su). [www.davios.com](http://www.davios.com). 111 S. 17th St., 215.563.4810. \$\$\$ Map 1, G5

**DIZENGOFF—Israeli.** Beard winner Michael Solomonov highlights his signature hummus with a simple menu: five variations rotated daily—think lamb, cabbage, chicken and beets—and come with pita, Israeli salad and pickles. Inside, picnic tables fill the cozy space, while outside, prime seats along Sansom Street make for great people watching in good weather. L, D (Daily). [www.dizengoffphilly.com](http://www.dizengoffphilly.com). 1625 Sansom St., 215.867.8181. \$ Map 1, H5; Whole Foods, 2101 Pennsylvania Ave. Map 1, G3

**ERAWAN THAI CUISINE—Thai.** This inviting BYOB offers tasty and authentic dishes with fresh ingredients. A friendly staff helps guests select spices to fit specific tastes. BYOB. L, D (T-Su). [www.erawanthai.com](http://www.erawanthai.com). 123 S. 23rd St., 215.567.2542. \$\$ Map 1, F5

# DAVIO'S®

## NORTHERN ITALIAN STEAKHOUSE



*Seasonal cocktails, handmade pasta, perfectly cooked steaks & fresh salads expertly prepared using the finest ingredients.*

For reservations:

Philadelphia | 215.563.4810

King of Prussia Town Center | 610.337.4810

WWW.DAVIOS.COM | @DAVIOSPHILLY | @DAVIOSKOP

**HISTORIC HOT SPOT** Opened in 1773, City Tavern (page 28) still serves the dishes once favored by regulars like Thomas Jefferson and Benjamin Franklin.



**FINE PALATE**—Global American. This fine-dining establishment focuses on globally inspired fare using high-quality ingredients. Enjoy fried oysters at brunch, banh mi and ramen at lunch, and pork belly, paella and mac and cheese with crab at dinner. D (Tu-Sa), Br (Sa-Su). [www.finepalategroup.com](http://www.finepalategroup.com). 231 S. 15th St., 267.318.7971. \$\$\$-\$\$\$\$ Map 1, H6

**GOLDIE**—Middle Eastern. From James Beard winner Michael Solomonov and Steve Cook, owners of lauded Zahav, comes this fast-casual concept with a simple menu: falafel, fries and tahina shakes. Located above Rooster Soup Company. L, D (Daily). [www.goldiefalafel.com](http://www.goldiefalafel.com). 1526 Sansom St., 267.239.0777. \$ Map 1, H5

**HARP & CROWN**—American. Upstairs, a vintage-wallpapered 140-seat dining room provides Old World-style ambiance, while downstairs, a bar and two-lane, reservations-only bowling alley called Elbow Lane keep revelers entertained. For sustenance, find wood-fired pizza, charcuterie and New American entrees, plus a distinctive cocktail list. D (Daily), Br (Sa-Su). [harpandcrown.com](http://harpandcrown.com). 1525 Sansom St., 215.330.2800. \$\$ Map 1, H5

**LECHERI**—Classic French. Pierre and Charlotte Calmels' elegant Art Alliance restaurant offers Old World traditions in dishes like lamb osso bucco, poached halibut and a classic onion soup gratinée. Reservations are required for the dining rooms, but the 14-seat bar is walk-in only. L (W-F), D (W-Su), Br (Sa-Su). [www.lecheriphilly.com](http://www.lecheriphilly.com). 251 S. 18th St., 215.546.7700. \$\$\$-\$\$\$\$ Map 1, G6

**THE LOVE**—American. Aimee Olexy and James Beard winner Stephen Starr's newest venture gives ample reason for falling in love, from the tasty fare to the cozy bar and dimly lit dining room. Stop in for a cocktail with clever names like "A Very Good Bourbon Drink," mixing Jim Beam Black with Gran Classico Bitter, Iris vermouth and apple cider. Move on to dinner with approachable, yet creative dishes like whole smoked trout with kale, maple farro and spicy pecans. Groups of up to 20 spread the good vibes around a country-style communal table in the upstairs loft. D (daily). [www.theloverestaurant.com](http://www.theloverestaurant.com). 130 S. 18th St., 215.433.1555. \$\$\$ Map 1, G5

**PLENTY CAFE**—Cafe, Restaurant & Bar. This "Best of Philly" European-style spot offers a Pinterest-worthy backdrop for tucking into a menu that trots the globe. Dishes include banh mi, empanadas and shakshuka, plus breakfast all day. Caffeine fiends will be pleased to find a java program that partners with Square One Coffee, pouring single-origin nitros, cold brews and even a seasonal coffee soda on tap. Beer, wine, cocktails. B, L, D (Daily). [www.plentyphiladelphia.com](http://www.plentyphiladelphia.com). 1602 Spruce St., 215.560.8684. \$-\$ Map 1, H6; 1710 E. Passyunk Ave., 267.909.8033. Map 3, D3

**R2L**—American. On the 37th floor of Two Liberty Place, Chef Daniel Stern gives modern twists to traditional American flavors. The stunning skyline views make R2L one of Philly's most spectacular dining destinations. D (Daily). [www.r2restaurant.com](http://www.r2restaurant.com). 50 S. 16th St., 37th floor, 215.564.5337. \$\$\$ Map 1, H5

**SEAFOOD UNLIMITED**—Seafood. Located just off of Rittenhouse Square, this intimate neighborhood favorite specializes in simply prepared fresh fish and seafood selections. D (M-Sa). [www.seafoodunlimited.com](http://www.seafoodunlimited.com). 270 S. 20th St., 215.732.3663. \$\$\$ Map 1, G6

**THIS IS HOW IT'S DONE**




**JIM'S SOUTH STREET PHILADELPHIA STEAKS & HOAGIES**

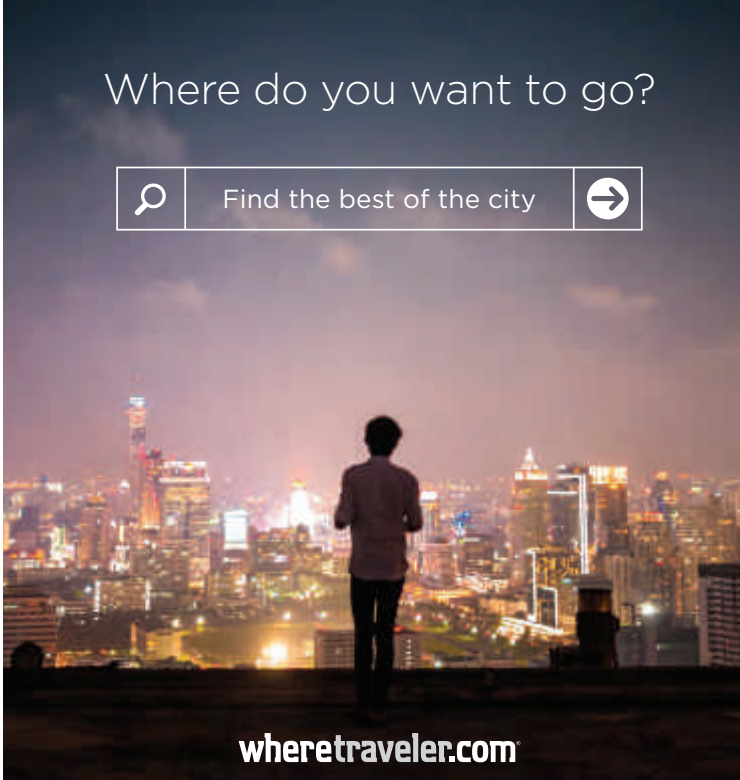
215.928.1911 • 4TH & SOUTH ST. • PHILADELPHIA • [JIMSSOUTHSTREET.COM](http://JIMSSOUTHSTREET.COM)

JIMSSOUTHSTREET @JIMSSOUTHSTREET #JIMSSOUTHSTREET

**OPEN EVERY DAY 'TIL LATE**

Where do you want to go?


Find the best of the city



[wheretraveler.com](http://wheretraveler.com)



**who:** you  
**what:** this cheesesteak  
**where:** 9th + Passyunk  
**when:** now  
**why:** really?

Specializing in California-style burritos featuring fresh ingredients in sumptuous portions at affordable prices.

Lunch and Dinner  
 BYOB

**el fuego**

723 Walnut Street • 215.592.1931  
[Facebook.com/elfuegoburritosphilly](https://www.facebook.com/elfuegoburritosphilly)  
[www.elfuegophilly.com](http://www.elfuegophilly.com)

**SUGA BY SUSANNA FOO**—Chinese. Two-time James Beard-winning chef Susanna Foo's venture uses farm-fresh ingredients with fine-dining techniques to produce such dishes as tea-smoked Peking duck breast with farro risotto and Mandarin pork pasta. L, D (Daily), Br (Sa-Su). [www.sugabyfoo.com](http://www.sugabyfoo.com). 1720 Sansom St., 215.717.8968. \$\$\$-\$\$\$\$ Map 1, G5

**VERNICK FOOD & DRINK**—American. Modern refinement and perfect ingredients are the hallmarks of this husband-and-wife operation. James Beard winning chef Greg Vernick's thoughtful menu of global plates showcases techniques he perfected while working in kitchens with Jean-Georges Vongerichten around the world. Don't miss the delectable entrees roasted in a wood oven, including the organic Amish chicken. Reservations recommended. D (Tu-Su). [www.vernickphilly.com](http://www.vernickphilly.com). 2031 Walnut St., 267.639.6644. \$\$\$ Map 1, G5

**VIC SUSHI**—Sushi. This no-frills BYOB plates classic crowd-pleasers like Philadelphia and California rolls, along with inventive house specials and delicious tuna dumplings. L, D (M-Sa). [www.vic-sushi.com](http://www.vic-sushi.com). 2035 Sansom St., 215.564.4339. \$ Map 1, G5

**Chinatown**

**NAN ZHOU HAND DRAWN NOODLE HOUSE**—Chinese. The fresh soups and handmade noodles alone make Nan Zhou a must-stop Chinatown destination. BYOB, cash only. L, D (Daily). [www.nanzhounoodlehouse.com](http://www.nanzhounoodlehouse.com). 1022 Race St., 215.923.1550. \$ Map 1, J4

**VIETNAM RESTAURANT**—Vietnamese. This beloved hole-in-the-wall eatery located in the heart of Chinatown serves authentic Vietnamese cuisine at accessible prices. On the third floor is Bar Saigon, modeled after 1930s Saigon dance clubs, where guests sing karaoke while sipping tasty cocktails. L, D (Daily). [www.eatatvietnam.com](http://www.eatatvietnam.com). 221 N. 11th St., 215.592.1163. \$\$ Map 1, I4

**Convention Center**

**HARD ROCK CAFE**—American. Philly's outpost of the international phenomenon is located in the historic Reading Terminal train station, steps from the Convention Center and a few blocks from the historic district. Inside, the restaurant is filled with its trademark rock memorabilia, plus a gift shop of Hard Rock-branded souvenirs. On the menu, find favorites like "Legendary Burgers," steaks, salads and sandwiches. L, D (Daily). [www.hardrock.com](http://www.hardrock.com). 1113-31 Market St., 215.238.1000. \$\$ Map 1, I4

**MOLLY MALLOY'S**—Pub/Bar. Nestled in the heart of the historic Reading Terminal Market, this airy gastropub from the folks behind Iovine Brothers produce serves seasonal fare from chef Bobby Fisher and pours craft beers, 24 of which are on draft. B, L, D (Daily). [www.mollymalloypshilly.com](http://www.mollymalloypshilly.com). Reading Terminal Market, 1136 Arch St., 267.525.1001. \$ Map 1, I4

**READING TERMINAL MARKET**—International. Founded in 1893, Reading Terminal Market has evolved into one of Philadelphia's major dining destinations, a food mecca where you can taste international and local specialties, including cheesesteaks and Pennsylvania Dutch treats. B, L, D (Daily). [www.readingterminalmarket.org](http://www.readingterminalmarket.org). 12th and Arch streets, 215.922.2317. \$ Map 1, I4







**LA PEG—French.** This contemporary brasserie and beer garden is located inside the FringeArts building along the Delaware River Waterfront. The crowd-pleasing menu features dishes like beef tartare, steak frites, butternut squash soup and cheeseburgers. D (Daily), Br (Sa-Su). www.lapegbrasserie.com. 140 N. Columbus Blvd., 215.375.7744. **Map 1, L4**

### South Philly & Italian Market

**FEDERAL DONUTS—Sweets.** James Beard winner Michael Solomonov's little gem offers fresh cake doughnuts at 7 am, and then serves Korean-style fried chicken from noon until they run out. B, L (Daily). www.federaldonuts.com. 1219 S. 2nd St., 267.687.8258. **Map 3, F2; 1632 Sansom St., 215.665.1101. Map 1, H5**

**GENO'S STEAKS—Cheesesteaks.** Geno's serves up classic steaks with Philly flair. The inevitable line provides time to figure out what to order; when you get to the counter, make it fast and simple. Cash only. B, L, D (Daily, 24 hrs.). www.genosteaks.com. 1219 S. Ninth St., 215.389.0659. **Map 3, E2**

**GREEN EGGS CAFE—American.** This restaurant with two locations is a favorite for mouth-watering breakfast and lunch dishes like smoked Atlantic salmon omelet, Belgian waffles and a variety of sandwiches and salads. Cash only. B, L, Br (Daily). www.greeneggscfe.net. 212 S. 13th St., 267.861.0314. **Map 1, H5; 1306 Dickinson St., 215.266.3447; 719 N. Second St., 215.922.3447.**

**JIM'S SOUTH STREET—Cheesesteaks.** Since 1976, visitors and locals alike have been flocking to this temple to cheesesteak inside an Art Deco storefront on lively South Street. Hoagies, too. L, D (Daily). www.jimssouthstreet.com. 400 South St., 215.928.1911. **Map 1, K7**

**NINA'S TRATTORIA—Contemporary Italian.** This supper club inside the Italian Market serves Sicilian family specialties, along with traditional and contemporary fare from regions including Abruzzo, Calabria and Tuscany. The feather-light gnocchi are among many must-tries on the menu. L (Sa-Su), D (Tu-Su). www.ninatrattoria.com. 910 S. 9th St., 215.574.9995. **Map 1, J8**

**PAT'S KING OF STEAKS—Cheesesteaks.** Billed as the originator of the cheesesteak, this shop is a favorite that attracts fans from around the world. Local tip: Order "Whiz wit." B, L, D (Daily, 24 hrs.). www.patsofsteaks.com. 1237 E. Passyunk Ave., 215.468.1546. **Map 3, E2**

### South Street & Queen Village

**BRAUHAUS SCHMITZ—German.** This Philly original claims the largest selection of German beer in the city with 20 on draft and more than 80 bottles from 25 countries. Executive Chef Jeremy Nolen prepares classic German fare like house-made bratwurst, schweinshaxen and schnitzel. L, D (Daily). www.brauhauschmitz.com. 718 South St., 267.909.8814. **Map 1, J7**

**ELA—American.** The kitchen at this bar and restaurant is run by Chef Jason Cichonski and features an inventive, rotating menu, an extensive wine and beer program and an inspired cocktail list. The modern yet rustic setting allows diners a comfortable place to enjoy seriously good food. D (Daily), Br (Su). www.elaphilly.com. 627 S. 3rd St., 267.687.8512. **Map 1, K7**

**MARRAKESH—Moroccan.** For more than three decades, this South Street-area destination has served authentic feasts. Seven-course tasting menu, \$25 per person. Private dining and belly dancers available Su-Th on request and regularly F-Sa. D (Daily). www.marrakesheastcoast.com. 517 S. Leithgow St., 215.925.5929. **Map 1, K7**

**THE TWISTED TAIL—American.** This lively bourbon-and-blues emporium features a menu of charcoal-grilled fare, 40+ bourbons and plenty of craft beer. Dine at rustic wooden table indoors or out, then climb up the stairs for some rockin' live music. L (M-F), D (Daily), Br (Sa-Su). www.thetwistedtail.com. 509 S. 2nd St., 215.558.2471. **Map 1, K6**

**WHETSTONE TAVERN—American.** At this well-regarded neighborhood spot, Chef Jeremy Nolen crafts dishes with a modern touch. The menu features familiar and approachable fare with a focus on simple preparations and fresh ingredients from local farms and producers when possible. D (Daily). www.whetstonetavern.com. 700 S. 5th St., 267.909.8814. **Map 1, J7**

### University City

**CITY TAP HOUSE—American.** Located on the balcony of The Radian, City Tap House boasts 60 draft beers, including rare and sought-after craft brews. Chef Al Paris offers new American pub fare including "Daily Supper" specials. Dine on the terrace, or have a cocktail around one of five stone fire pits overlooking Walnut Street. L, D (Daily), Br (Sa-Su). www.citytaphouse.com. 3925 Walnut St., 215.662.0105. **Map 1, C5; 2 Logan Square, 215.587.9040.**

**DISTRITO—Mexican.** From Philly's acclaimed chef and restaurateur, Jose Garces, comes this high-energy spot with a menu of fresh interpretations of classics inspired by the spirited culture and cuisine of Mexico City. L, D (Daily). www.distritorestaurant.com. 3945 Chestnut St., 215.222.1657. **Map 1, C5**

**MARIGOLD KITCHEN—American.** Located inside a traditional Victorian row house, this restaurant features the culinary alchemy of Andrew Kochan and Tim Lanza. Each build tasting menu is meant to "surprise," with dishes drawing from the seasons that are as beautiful to look at as they are tasty to eat. BYOB. D (Tu-Sa). www.marigoldkitchenbyob.com. 501 S. 45th St., 215.222.3699. **Map 1, A7**

**VIETNAM CAFE—Vietnamese.** With this small but sleek outpost of Chinatown's popular Vietnam Restaurant, owner Benny Lai has brought his beloved Vietnamese cuisine to the University City neighborhood. Expect savory noodle soups and dishes, seafood, rice platters and the chef's special barbecued appetizer sampler. L, D (Daily). www.eatatvietnam.com. 816 S. 47th St., 215.729.0260. **Map 1, A7**

### Washington Square

**EL FUEGO—Mexican.** This happening spot whips up tasty "California-style" burritos, along with tacos, quesadillas and soups. The lunch hour is particularly lively, so get there early. L (Daily), D (M-F). www.elfuegoburritos.com. 723 Walnut St., 215.592.1931. **Map 1, J5**

**GARCES TRADING COMPANY—American.** Philadelphia's prolific Iron Chef, Jose Garces, delivers gourmet goods at his market, bakery, barista bar and cafe. One of the best features may be the curated wine, beer and spirits available inside

the market. L (M-F), D (Daily), Br (Sa-Su). www.garcestadingcompany.com. 1111 Locust St., 215.574.1099. **Map 1, L6**

**MORIMOTO—Japanese.** This stunning brainchild of Iron Chef Masaharu Morimoto and restaurant guru Stephen Starr features inventive Japanese cuisine and the freshest sushi on the block. The chef's prix-fixe menu is particularly noteworthy. Reservations recommended. L (M-F), D (Daily). www.morimotorestaurant.com. 723 Chestnut St., 215.413.9070. **Map 1, J5**

**RISTORANTE LA BUCA—Italian.** This romantic spot near Washington Square Park exudes Old World charm with specials like fresh seafood, brought to diners on a cart before preparation. L (M-F), D (M-Sa). L (M-F), D (M-Sa). www.ristolabuca.com. 711 Locust St., 215.928.0556. **Map 1, J6**

**TALULA'S GARDEN—American.** With a varied garden-to-table menu and extensive wine list, Talula's offers adventurous eaters delicious options like marinated halibut and oxtail stuffed artichoke barigoule with sea beans and saffron. Snag a seat in the charming outdoor garden in good weather. D (Daily), Br (Su). www.talulasgarden.com. 210 W. Washington Square, 215.592.7787. **Map 1, J6**

**VEDGE—Vegan.** Husband-and-wife team Rich Landau and Kate Jacoby give vegan cuisine a good name at their inventive, modern bistro inside a handsome row house. In the chef's deft hands, roots and leaves become the stuff of haute cuisine in dishes like "campfire gold potatoes" with black garlic tahina and baby shiitake mushrooms. Cocktails with house-made syrups and bitters are also musts. Reservations required. D (M-Sa). www.vedgerestaurant.com. 1221 Locust St., 215.320.7500. **Map 1, K6**

### Washington Square West

**AMIS—Italian.** At this convivial trattoria (one of three Philadelphia eateries by celebrated Chef Marc Vetri), dig into tapas-style fare like short ribs with hot peppers, pork chop with parmesan and grilled shrimp with chilies and cucumber. D (Daily), Br (Su). www.amisphilly.com. 412 S. 13th St., 215.732.2647. **Map 1, L6**

**BUD AND MARILYN'S—American.** Head toward the neon sign on 13th & Locust to this mid-century joint that's garnered plenty of buzz. In "Mad Men"-style environs, tuck into upgraded retro classics including fried chicken with house-made hot sauce and short rib stroganoff. On Sundays, groups and diners with kids in tow dig into the "Meat-and-Three," a family-style dinner with all the fixings—biscuits and jam, farm-fresh salads and sides. D (Daily). www.budandmarilyns.com. 1234 Locust St., 215.546.2220. **Map 1, L6**

**LITTLE SPOON CAFE—Coffee House.** Locals and visitors alike flock to this cheery brunch spot known for its adorable kitschy decor. In-house prepared offerings include soups, pastries and entrees, plus coffee drinks, from local roaster Philly Fair Trade Coffee. Their stellar brunch menu includes lemon ricotta pancakes, bacon waffle grilled cheese and a crowd-pleasing Monte Cristo sandwich made with honey ham, fried gouda, a smoked egg and jalapeno mayo. B, L (Daily) www.littlespooncafe.com. 1500 South St., 267.587.6559. **Map 1, H7**

# Entertainment



## Pennsylvania Ballet

Established in 1963, this company has earned a reputation as one of the most celebrated dance organizations in the country. Each season, the troupe brings its "A" game in classical performance to stages around town. On select days, March 8-18, catch Angel Corella's restaging of Marius Petipa's "Swan Lake," one

of the most famous classical love stories. The stage at Philadelphia's Academy of Music (also known as The Grand Old Lady of Locust Street) comes to life as dancers move to the music of Tchaikovsky in this enchanting spectacle, featuring gorgeous sets and costumes. www.paballet.org. 240 S. Broad St., 215.893.1999. **Map 1, H6**



## Standard Tap

This old-school two-story bar built by a former Sam Adams brewmaster, has the charm of a pub and the full menu of a proper restaurant. Chalkboards dispersed throughout display the daily creations, which include terrines, wild game entrees and decadent desserts. www.standardtap.com. 901 N. 2nd St. 215.238.0630.

## Arcade & Billiards

**ARNOLD'S FAMILY FUN CENTER—**One of the largest indoor fun centers in the United States features electric go-karts, bumper cars, crazy cars, a bounce zone, laser tag, black-light mini golf and bowling lanes. Cafe, bistro and bar. Hours vary by season. www.arnoldffc.com. 2200 West Drive, Oaks, Pa., 610.666.0600.

**BARCADE—**As the name suggests, this cavernous space in Fishtown ingeniously combines a bar with an arcade, serving a stellar selection of craft beer to lovers of old-school games like Donkey Kong, Ms. Pacman and Space Invaders, which are all just \$.25 a game. Must be 21 or older to enter. M-Su noon-2 am. www.barcadephiladelphia.com. 1114 Frankford Ave., 215.634.4400.

**BUFFALO BILLIARDS—**Kick back at this casual Old City spot and enjoy happy hour specials as you chill out in one of the leather banquettes. For relaxation with a competitive edge, shoot pool at one of eight tables or choose from darts, shuffle board, skee-ball or foosball. M-F 4 pm-2 am, Sa-Su 2 pm-2 am. www.buffalobilliards.com. 118 Chestnut St., 215.574.7665. **Map 1, K5**

## Bars & Lounges

**ASHTON CIGAR BAR—**Enjoy the vast selection of 200 different cigars and an extensive bar list including wines, cordials and rare liquors at the only cigar bar open to the public in the city, complete with a

state-of-the-art air purification system. Sa-Th 4 pm-2 am, F noon-2 am. www.ashtoncigarbar.com. 1522 Walnut St., 2nd floor, 267.350.0000. **Map 1, H6**

**THE BARDS—**A purist's Irish pub that encourages pints of Guinness and a shot of Tulamore Dew, this Center City tavern is an ideal spot to wind down. M-F 12 am-2 am, Sa-Su 10 am-2 am. www.bardsirishbar.com. 2013 Walnut St., 215.569.9585. **Map 1, G5**

**CONSHOCKEN BREWING COMPANY—**This brewpub in the Main Line features the recipes of head brewer Andrew Horne, a Philadelphia native who learned his trade with breweries like Yards, Avery and Breakside. Grab a pint of the flagship brew, the Cascadian Dark Ale, while munching on affordable bar snacks. M-W 4 pm-10 pm, Th 4 pm-11 pm, F 3 pm-12 am, Sa 11 am-12 am, Su 11 am-8 pm. www.conshockenbrewing.com. 739 East Elm St., Suite B, Conshohocken, Pa., 610.897.8962.

**FADO IRISH PUB—**This comfortable pub offers an escape to Victorian-era Dublin with nooks that seat from two to 12 people, plus fine Irish and European beers, a packed dance floor on the weekend and regular screenings of soccer matches. M-F 11:30 am-2 am, Sa 10 am-2 am, Su 10 am-midnight. www.fadoirishpub.com/philadelphia. 15th and Locust sts., 215.893.9700. **Map 1, H6**

There's a lot more going on this March. Visit us online: [wheretotraveler.com](http://wheretotraveler.com)

**GRACE TAVERN—**This low-key neighborhood spot offers comfort foods like burgers, sandwiches and bar snacks (think chicken fingers), plus some vegan options. The beer list is wide with several ciders and sour ales, too. Daily 11:30 am-2 am. www.gracetavern.com. 2229 Grays Ferry Ave., 215.893.9580. **Map 1, F7**

**HOWL AT THE MOON—**The talented staff at this dueling piano bar perform crowd favorites from the '70s to today and take requests, keeping the crowd dancing and singing along all night. Try a one of the signature cocktails or a "bucket of booze," which serves four or more people. M-W 7 pm-2 am, Th 6 pm-2 am, F-Sa 5 pm-2 am. www.howlatthemoon.com. 258 S. 15th St., 215.546.4695. **Map 1, H6**

**KHYBER PASS PUB—**Settle in at one of the well-worn booths or at the bar in this no-frills pub for excellent Southern-style comfort food. The nearly 20 craft beers on tap rotate constantly and endless bottle choices hail from around the world. Daily 11 am-2 am. www.khyberpasspub.com. 56 S. Second St., 215.238.5888. **Map 1, K5**

**KITE & KEY—**This lively gastropub in the Fairmount neighborhood pours a dozen, mostly local, brews for a crowd of young professionals. Service here is fast and friendly. Daily 11 am-2 am. www.thekiteandkey.com. 1836 Callowhill St., 215.568.1818. **Map 1, G3**





**LONDON GRILL**—London Grill is a Fairmount institution, located steps from historic Eastern State Penitentiary. For years, its dark wood bar has hosted locals looking for sophisticated bar fare. Look for events, like weekly quiz nights. M 4 pm-2 am, Tu-F 11 am-2 am, Sa-Su 10 am-2 am. www.londongrill.com. 2301 Fairmount Ave., 215.978.4545. **Map 1, F2**

**MCGILLIN'S OLD ALE HOUSE**—Opened in 1860, this historic taproom is Philly's oldest tavern and claims the city's first liquor license. Locals and visitors head here for the friendly crowd, hearty pub fare and nearly 30 draft beers. Daily 11 am-2 am. www.mcgillins.com. 1310 Drury St., 215.735.5562. **Map 1, I5**

**MEMPHIS TAPROOM**—This nationally acclaimed craft beer destination also boasts a menu of beer-centric dishes with vegetarian and vegan options. Daily 11:30 am-2 am. www.memphistaproom.com. 2331 E. Cumberland St., 215.425.4460. **Map 1, E2**

**MILKBOY**—These popular bars double as live music venues, featuring both local and nationally recognized performers. Each location boasts a signature roll-up garage-style window, weekday morning cocktails and delicious American food. It's free to hang out, but shows are usually ticketed. M-F 7 am-2 am, Sa-Su 11 am-2 am. milkboyphilly.com. 1100 Chestnut St., 215.925.6455. **Map 1, I5**

**MONK'S**—For more than 20 years, this Center City spot has been earning raves throughout Philadelphia for its top selection of beer and a tasty food menu to boot. Located just off Spruce Street, Monk's occasionally gets limited distribution kegs shipped in from the farthest reaches of the country. Daily 11:30 am-2 am. www.monkscafe.com. 264 S. 16th St., 215.545.7005. **Map 1, H6**

**PHILADELPHIA DISTILLING**—This modern warehouse in hip Northern Liberties makes a stunning setting not only for sampling spirits, but also for watching the distilling process. Hand-hammered copper stills and wooden fermentation vessels form the crux of the process here, one that dates back to 1854. Retail: Th-Su noon-11 pm. Bar: Th-F 4-11 pm, Sa-Su 1-11 pm. Tours/tasting: Th, F 6 pm; Sa-Su 2, 4 and 6 pm (book online). www.philadelphiadistilling.com. 25 E. Allen St., 215.671.0346.

**THE PLOUGH & THE STARS**—The beautifully renovated building features lofty ceilings and flowing Guinness. Not your typical Irish pub, The Plough is a little more hip, with a continental menu to match. During the weekend, stop by for some late night dancing. M-F 11:30 am-2 am, Sa-Su 10:30 am-2 am. www.ploughstars.com. 123 Chestnut St., 215.733.0300. **Map 1, K5**

**PUB ON PASSYUNK EAST**—This hipster hotspot in South Philly (aka "POPE") is beloved for its long and diverse beer list, jukebox, a friendly and knowledgeable bar staff, and endless inspiration for people-watching. Daily 11 am-2 am. www.pubonpassyunkeast.com. 1501 E. Passyunk Ave., 215.755.5125.

**THE RANSTEAD ROOM**—Hidden off a side street adjacent to restaurant El Rey, this dimly lit enclave serves libations minted at the turn of the century in true speakeasy style. Look for the "RR" on the door. Daily 6 pm-2 am. 2013 Ranstead St., 215.563.3330. **Map 1, G5**

**ROYAL TAVERN**—This bustling spot has one of the best burgers in town and plenty of beers on tap to wash it down. Come early; seats fill up fast. M-F

11:30 am-2 am, Sa-Su 10 am-2 am. www.royaltavern.com. 937 E. Passyunk Ave., 215.389.6694. **Map 1, J8**

**TIR NA NOG**—This lively spot brings Ireland to Philly with an ambiance that evokes the Emerald Isle. Join locals for happy hour and watch European football on the big-screen, while sipping expertly poured Guinness, naturally. Daily 11 am-2 am. www.tirnanogphilly.com. 1600 Arch St., 267.514.1700. **Map 1, H4**

**VESPER**—The formerly private Vesper Club has reopened as a restaurant and lounge with a speak-easy vibe, serving up toasts, tastes and steak dinners. At the bar, classic cocktails are on the menu, from the negroni to the French 75. Live and local music command attention seven nights a week in the Skyline Room. M-F 3:30 pm-2 am, Sa 5 pm-2 am. www.vesperphilly.com. 223 Sydenham St., 267.603.2468 267.603.2468. **Map 1, H5**

**THE VICTORIA FREEHOUSE**—This authentic British pub brings London to Philly with craft beers, ciders and cask ales imported from the UK. Pair your pint with traditional pub favorites like bangers and mash and sticky toffee pudding. M-Sa noon-midnight, Su noon-4 pm. www.victoriafreehouse.com. 10 S. Front St., 215.543.6089. **Map 1, J5**

**VINTAGE**—This gorgeous Midtown Village wine bar has an impressive list of reds, whites and everything in between. It's *vino* without the pretension. M-F 4 pm-2 am, Sa-Su 11 am-2 am. www.vintage-philadelphia.com. 129 S. 13th St., 215.922.3095. **Map 1, I5**

## Bowling

**LUCKY STRIKE LANES**—Hollywood's über-cool bowling lounge makes its way east. This stylish Center City spot features '50s décor, comfort food, delicious cocktails and plenty of lanes to roll. M-Tu 11:30 am-1 am, W-Th till midnight, Fr till 2 am, Sa noon-2 am, Su noon-midnight. www.bowluckystrike.com. 1336 Chestnut St., 215.545.2471. **Map 1, I5**

**NORTH BOWL LOUNGE 'N' LANES**—Northern Liberties catches onto the contemporary bowling craze with this retro alley. Bowl downstairs in the Pop-modern alley and then relax post pins with a drink in the second-floor lounge. North Bowl also offers billiards and classic arcade games. M-F 5 pm-2 am, Sa-Su noon-2 am. www.northbowlphilly.com. 909 N. Second St., 215.238.2695. **Map 1, K1**

## Casinos

**PARX CASINO**—Located in Bensalem, about 20 miles north of Center City by way of I-95 or the PA Turnpike, Parx is worth the trip. This 164,000-square-foot casino boasts 3,500 slot machines, 120 live table games, 80 poker tables and a variety of restaurants, bars and entertainment, including thoroughbred horse racing at Philadelphia Park Racetrack. Complimentary parking. Daily 24 hours. www.parxcasino.com. 2999 Street Road, Bensalem, Pa., 888.588.7279.

**SUGARHOUSE CASINO**—Wager on having a fantastic time at this 45,000-square-foot casino on the Delaware River waterfront in the Fishtown neighborhood. The huge gaming floor offers slots, as well as live table games such as craps, blackjack and poker. Onsite dining, free parking and valet available. Daily 24 hours. www.sugarhousecasino.com. 1001 N. Delaware Ave., 877.477.3715. **Map 1, L1**

**VALLEY FORGE CASINO**—This casino about 30 minutes beyond Philly city limits boasts more than 600 slot machines, along with 50 table games, including blackjack, craps and roulette. Onsite dining and nightlife options range from fine steak-and-seafood at Pacific Prime to cocktails and dancing at Seven Nightclub. Daily visitors can access the casino floor after spending \$10 or more at one of the restaurants or shops on the property. Accessible from Routes 202, I-76 and the Pa. Turnpike. Daily 24 hours. www.vfcasino.com. 1160 First Ave., King of Prussia, Pa., 610.354.8118.

## Classical & Opera

**OPERA PHILADELPHIA**—Philly's premier opera company stages a full season of opulent productions. Not only does this company present classics with rich precision, but it also produces new and innovative operas. This month: "A Quiet Place," **March 7, 9, 11**. www.operaphila.org. Academy of Music, Broad and Locust sts., 215.893.1999. **Map 1, H6**

**PHILADELPHIA CHAMBER MUSIC SOCIETY**—With a mission of making classical music accessible to a wide audience, the Chamber Music Society performs more than 60 concerts annually. Performances are regularly held in the intimate Perelman Theater at the Kimmel Center. This month: Johannes Quartet, **March 4**; Musicians From Marlboro II, **March 6**; Pierre-Laurent Aimard, **March 13**; Christoph Richter, Denes Varjón, **March 14**; Takacs Quartet, **March 20**; Luca Pisaroni, Craig Terry, **March 22**; Sir Andras Schiff, **March 31**. www.pcmsonconcerts.org. Kimmel Center for the Performing Arts, 300 S. Broad St., 215.569.8080. **Map 1, H6**

**THE PHILLY POPS**—Michael Krajewski leads one of America's premier pops orchestras through a repertoire of classical, swing, Broadway, blues and jazz. This month: Best of Broadway, **March 9-11**. www.phillypops.org. Kimmel Center for the Performing Arts, 300 Broad St., 215.893.1999. **Map 1, H6**

## Comedy

**BORGATA EVENT CENTER**—Located in casino-filled Atlantic City, where Philadelphia and Jersey residents go to gamble and party, the Borgata Events Center books acts by rock 'n' roll superstars, pop sensations and legendary crooners. This month: Lewis Black, **March 16-17**. www.theborgata.com. One Borgata Way, Atlantic City, NJ, 603.317.1000.

**COMEDYSPORTZ**—For more than 25 years, this improvisational comedy troupe has been earning raves along with laughs. Two teams of funny guys and gals compete for points with a referee calling the action. Audience participation is encouraged. Arrive early, as seating is limited. \$18, \$15 students, seniors and military. Sa 7:30 pm and 10 pm. www.comedysportzphilly.com. 2030 Sansom St., 484.450.8089. **Map 1, G5**

**HELIUM COMEDY CLUB**—Local talent and national headliners take the stage at this club, just off Rittenhouse Square. This month: Tom Green, **March 1-3**; Matt Braunger, **March 11-8**; Jeremy McLellan, **March 14**; Colin Kane, **March 15-17**; Ryan Davis, **March 22-24**; "Burlesque and Comedy," **March 28**; Greg Proops, **March 30-31**. www.heliumcomedy.com. 2031 Sansom St., 215.496.9001. **Map 1, G5**

**PUNCH LINE PHILLY**—A part of the thriving entertainment scene in Fishtown, this comedy club, restaurant and bar will send you laughing all the way home with new performances each week. The 300-seat venue features VIP seating and an outdoor patio. The bar offers local craft beers, cocktails and wines by the glass. This month: Chris Porter, **March 1-3**; Tony Woods, **March 8-10**; Rachel Feinstein, **March 15-17**; Michael Kosta **March 23-24**; Ali Siddiqi, **March 29-31**. www.punchlinephilly.com. 33 E. Laurel St., 215.606.6555.

## Concert Venues

**BORGATA EVENT CENTER**—Located in casino-filled Atlantic City, where Philadelphia and Jersey residents go to gamble and party, the Borgata Events Center books acts by rock 'n' roll superstars, pop sensations and legendary crooners. This month: Kansas, **March 9**; Foreigner, **March 10**; G-Eazy, **March 16**. www.theborgata.com. One Borgata Way, Atlantic City, NJ, 603.317.1000.

**ELECTRIC FACTORY**—Big-name and up-and-coming acts appear at this cavernous, mostly standing-room venue with a busy calendar. Ticket prices and show times vary. This month: Nightwish, **March 16**; MGMT, **March 20**; Between the Buried and Me, **March 31**. www.electricfactory.info. 421 N. Seventh St., 215.627.1332. **Map 1, J3**

**THE FILLMORE PHILADELPHIA**—Fishtown's legendary Ajax Metal Factory has been transformed into a state-of-the-art 2,500 capacity venue, honoring

the traditions of historic Fillmore music halls and weaving in some Philly flavor. On the top floor, The Foundry serves as a smaller venue where local bands and DJs take the stage. This month: Taylor Bennet, **March 1**; Wallows, **March 2**; Missio, **March 4**; Ella Vos, **March 6**; Galactic Empire and Mac Sabbath, **March 8**; Amy Shark, **March 11**; Coast Modern, **March 15**; Miguel, **March 20**; Marmozets, **March 22**; Movements, **March 24**; Billy Currington, **March 29**. www.thefillmorephilly.com. 29 E. Allen St., 215.309.0150. **Map 1, L1**

**THEATRE OF THE LIVING ARTS (TLA)**—This former movie house is now a two-story music venue featuring popular touring bands and a funky boho vibe. This month: Monster Energy Outbreak Tour Presents: LP, **March 3**; Spoon, **March 6**; OMD, **March 7**; R&B Only, **March 10**; Moose Blood, **March 16**; Dumpstaphunk, **March 17**; Senses Fail, **March 18**; Watain, **March 29**; The Dean Ween Group, **March 30**. The Selena Experience, **March 31**. www.inphilly.com. 334 South St., 215.922.1011. **Map 1, K7**

**UNION TRANSFER**—Originally built as a luggage terminal in the early 1900s, this mid-size music hall boasts towering arches, elegant chandeliers and stained glass for a dramatic yet intimate atmosphere. Separate bar area for the 21+ crowd. This month: Elliot Root, **March 1**; Kolars **March 2**; John Nolan **March 3**; Callowhill **March 6**; Parsonsfield, **March 7**; Jessica Lea Mayfield, **March 8**; Beth Ditto, **March 11**; Anais Mitchell, **March 15**; Nils Frahm, **March 17**; Big K.R.I.T., **March 19**; Men I Trust,

**March 21**; Dan Auerbach, **March 24**; Courtney Marie Andrews, **March 24**; Glen Hansard, **March 25**; Kyle Craft, **March 26**; S. Carey, **March 28**; Darlingside, **March 30**; Lucy Rose, **March 31**. www.utphilly.com. 1026 Spring Garden St., 215.232.2100. **Map 1, I2**

**WELLS FARGO CENTER**—The biggest names in music stop at this stadium arena and sports complex in South Philadelphia. Get there by car or take SEPTA's Broad Street subway line to AT&T Station. This month: Demi Lovato with DJ Kahlid and Keh-lani, **March 23**. www.spectratix.com. 3601 S. Broad St., 215.336.3600 215.336.3600.

## Dance

**ANNENBERG CENTER FOR THE PERFORMING ARTS**—This popular performing arts venue on the campus of the University of Pennsylvania features a diverse array of shows from around the world, including excellent touring dance troupes. This month: Douglas Martin's "Pride and Prejudice," **March 2-3**; The Peking Acrobats, **March 9-10**; DanzAbierta, **March 22-23**. www.annenbergcenter.org. 3680 Walnut St., 215.893.3900. **Map 1, C5**

**PARSONS DANCE COMPANY**—This internationally renowned contemporary dance company has won both the Dance Magazine Award and the American Choreography Award for its work at the University of Pennsylvania's Annenberg Center. This month: Company Wang Martinez, **March 15-18**; Kun-Yang Lin/Dancers, **March 22-24**. www.annenbergcenter.



org. Annenberg Center for the Performing Arts, 3680 Walnut St., 215.898.3900. **Map 1, C5**

**Film**

**CINEMARK UNIVERSITY 6 THEATRE**—This ultramodern multiplex boasts six climate-controlled auditoriums and reserved stadium-style seating. Screens popular new releases. [www.ravemotionpictures.com](http://www.ravemotionpictures.com). 4012 Walnut streets, 215.386.9800. **Map 1, B5**

**TUTTLEMAN IMAX THEATER**—A four-story, domed, 56-speaker theater inside The Franklin Institute. Call the hotline for current IMAX films and showtimes. Ticket prices vary. [www.fi.edu](http://www.fi.edu). 222 N. 20th St., 215.448.1200. **Map 1, G4**

**Gay & Lesbian Clubs**

**KNOCK RESTAURANT AND BAR**—Known for its friendly scene and inspired cuisine, Knock draws a sophisticated gay clientele of all ages. A daily happy hour is served from 5 pm-7 pm. Daily 11 am-2 am. [www.knockphilly.com](http://www.knockphilly.com). 225 S. 12th St., 215.925.1166. **Map 1, I6**

**UBAR**—With its large oval bar and mirrored walls, this a Gayborhood institution regularly draws a lively crowd. Relax with a no-frills brew and some juke box tunes. Daily 11 am-2 am. [www.ubarphilly.com](http://www.ubarphilly.com). 1220 Locust St., 215.546.6660. **Map 1, I6**

**VOYEUR**—Ladies and gents can get their groove on at this hot, after-hours nightclub in the heart of the Gayborhood. Open daily, check website for hours. [www.voyeurnightclub.com](http://www.voyeurnightclub.com). 1221 Saint James St., 215.735.5772. **Map 1, I6**

**Gentlemen's Clubs**

**DEILAH'S**—"America's #1 Gentlemen's Club" features "The World's Most Beautiful Showgirls." Find a complimentary after-work buffet, happy-hour specials and free cover with hotel room key or game day ticket stub. Free parking. M-Sa 11:30 am-2 am, Su 1 pm-1 am. [www.deilahs.com](http://www.deilahs.com). 100 Spring Garden St., 215.625.2800. **Map 1, L2**

**Karaoke**

**THE HAPPY ROOSTER**—On Thursday nights at 10 pm, this cheery restaurant welcomes karaoke lovers for some rousing tunes with DJ John. Daily 11:30 am-2 am. [www.thehappyrooster.com](http://www.thehappyrooster.com). 118 S. 16th St., 215.963.9311. **Map 1, H5**

**YAKITORI BOY**—This high-tech karaoke bar in Philly's Chinatown draws a fun crowd. Belt your favorite tunes or rent one of eight private rooms. Call for hours. [www.yakitoriboy.com](http://www.yakitoriboy.com). 211 N. 11 St., 215.923.8088. **Map 1, I4**

**Live Music Clubs**

**BOARDWALK HALL**—Formerly Atlantic City Convention Hall, this venue seats more than 14,000 people. With its vaulted 137 foot high ceilings and stunning architecture, this venue plays host to music's icons such as The Rolling Stones, Bruce Springsteen, and Madonna. [www.boardwalkhall.com](http://www.boardwalkhall.com). 2301 Boardwalk, Atlantic City, NJ, 609.348.7000.

**CHRIS' JAZZ CAFE**—Live jazz featuring great local and big-name talent, plus a full dinner menu. Check website for full schedule of events. M-F 11 am-2 am, Sa 6 pm-2 am. [www.chrisjazzcafe.com](http://www.chrisjazzcafe.com). 1421 Sansom St., 215.568.3131. **Map 1, H5**

**THE CLEF CLUB OF JAZZ AND THE PERFORMING ARTS**—This four-story building, affectionately referred to as "The House That Jazz Built," was formed by a music union in the mid-20th century and has been the hangout of such famous members as John Coltrane, Nina Simone and Ella Fitzgerald. It has a large concert hall and boasts an elegant bar on the second floor, which overlooks a stage and tables. This month: Arturo O'Farrell and The Afro Latin Jazz Ensemble, **March 17**. [www.cleclubofjazz.org](http://www.cleclubofjazz.org). 738 S. Broad St., 215.893.9912. **Map 1, H7**

**JOHNNY BRENDA'S**—Catch locally and nationally renowned indie rock acts almost every night at this hipster hangout in the up-and-coming Fishtown neighborhood. The venue is upstairs from a tavern that features upscale pub grub. This month: Bruno Major, Vanessa Scheff, **March 3**; Shopping, French Vanilla, Control Top, **March 4**; Arie, Plastic Picnic, **March 5**; Julian Lage, **March 6**; Adrienne Lenker (of Big Thief), Nick Hakim, **March 7**; The Low Anthem, **March 8**; The Skull Eclipses, **March 9**; Son Step, **March 10**; Agar Agar, **March 11**; The Casket Lottery, **March 14**; Born Ruffians, **March 22**; Marlon Williams, Tiny Ruins, **March 24**; The Soft Moon, Boy Harsher, **March 27**; Annie Hart, **March 30**. [www.johnnybrendas.com](http://www.johnnybrendas.com). 1201 N. Frankford Ave., 215.739.9684. **Map 1, L1**

**WARMDADDY'S**—This South Philly blues and jazz club offers a casual, relaxed atmosphere, live entertainment nightly and classic southern cuisine. Tu-Th 5 pm-11 pm, F till midnight, Sa 1 pm-midnight, Su 10:30 am-3 pm and 4 pm-11 pm. [www.warmdaddys.com](http://www.warmdaddys.com). 1400 S. Columbus Blvd., 215.462.2000. **Map 3, G2**

**WORLD CAFE LIVE**—There's always something happening at this University City venue and restaurant, featuring local and national acts on two stages and frequent open mics and jam sessions. Ticket prices and show times vary. F from 11 am, Sa-Th from 5 pm. This month: John Byrne Band with No Irish Need Apply, **March 2**; An Evening with Nada Surf, **March 9**; Echoes, the American Pink Floyd, **March 24**; Tom Rush, **March 25**; Charlie Hunter Trio featuring Silvana Estrada, **March 31**. [www.philly.worldcafe-live.com](http://www.philly.worldcafe-live.com). 3025 Walnut St., 215.222.1400. **Map 1, E5**

**Nightclubs**

**BLEU MARTINI**—Specializing in more than 30 different martinis, this swanky bar is located in the heart of Old City's bustling nightlife strip. Daily 4 pm-2 am. [www.bleumartini-philly.com](http://www.bleumartini-philly.com). 24 S. Second St., 215.940.7900. **Map 1, K5**

**CUBA LIBRE RESTAURANT & RUM BAR**—Also a popular restaurant, Cuba Libre boasts a lively fiesta on weekends. Professional Latin dancers join the crowd on Fridays and Saturdays. Call for hours. [www.cubalibrerestaurant.com](http://www.cubalibrerestaurant.com). 10 S. Second St., 215.627.0666. **Map 1, K5**

**RUMOR**—Put on your dancing shoes—stilettoes preferred—to hit this popular Center City nightclub. Two large dance floors, multiple sound systems, a private VIP vault and multiple bars. Th-Sa 10 pm-2 am. [www.rumorphilly.com](http://www.rumorphilly.com). 1500 Sansom St., 215.988.0777. **Map 1, H5**

**VANGO**—This hip nightclub is where Philly's young and stylish set get their fix of pulsing dance music and cool cocktails. Enjoy a drink at the skybar upstairs, where club-goers gather on warm summer evenings for drinks and conversation. Daily 5 pm-

2 am. [www.vangoloungeandskybar.com](http://www.vangoloungeandskybar.com). 116 South 18th St., 215.568.1020. **Map 1, G5**

**ZEE BAR**—A spacious-yet-intimate members-only club that takes the concept into a stratosphere of unprecedented luxury. Members enjoy extended hours, VIP spaces, bottle service and more. W-Sa, 10 pm-3 am. [www.zee-bar.com](http://www.zee-bar.com). 100 Spring Garden St., 215.922.2994. **Map 1, L2**

**Theater**

**BRISTOL RIVERSIDE THEATRE**—Founded in 1984, Bristol Riverside Theatre is a state-of-the-art, riverfront theater in the Philadelphia countryside of Bucks County. This month: The Producers, **March 6-31**. [www.brtstage.org](http://www.brtstage.org). 120 Radcliffe St., Bristol, Pa., 215.785.0100.

**FORREST THEATRE**—A few blocks from the Pennsylvania Convention Center, this elegant, historic theater hosts touring Broadway shows and the city's best theater and dance productions. This month: School of Rock **March 27-April 1**. [www.forrest-theatre.com](http://www.forrest-theatre.com). 1114 Walnut St., 800.447.7400. **Map 1, I5**

**FRINGE ARTS**—Housed within a vintage 1903 pumping station beneath the Benjamin Franklin Bridge, Fringe Arts features a 232-seat theater, outdoor plaza and restaurant La Peg, which serves up a casual brasserie-style menu. Expect world-class international artists and cutting edge performances from this contemporary arts collaborative. [www.fringearts.com](http://www.fringearts.com). 140 N. Columbus Blvd., 215.413.9006. **Map 1, L4**

**HEDGEROW THEATRE**—This theater located in the suburbs of Philadelphia offers a mix of traditional and experimental repertory productions, in addition to collaborations with other theaters. This month: Wait Until Dark, **March 1-18**. [www.hedge-rowtheatre.org](http://www.hedge-rowtheatre.org). 64 Rose Valley Road, Rose Valley, Pa., 610.565.4211.

**KIMMEL CENTER FOR THE PERFORMING ARTS**—This elegant entertainment complex houses multiple stages in the hub of Philadelphia's Avenue of the Arts. This month: "Something Rotten!," **through March 4**; "School of Rock," **March 27-April 1**. [www.kimmelcenter.org](http://www.kimmelcenter.org). 300 S. Broad St., 215.670.2300. **Map 1, H6**

**LANTERN THEATER COMPANY**—The Lantern's productions evoke thoughtful discussion long after the plays have ended. This month: The Tempest **March 15-April 22**. [www.lanterntheater.org](http://www.lanterntheater.org). St. Stephen's Theater, 10th and Ludlow sts., 215.829.0395. **Map 1, I5**

**PEOPLE'S LIGHT THEATRE**—Just outside Philly, People's Light is a professional company producing diverse, thought-provoking and critically acclaimed works. This month: "Diary of Anne Frank," **March 1-18**. [www.peopleslight.org](http://www.peopleslight.org). 39 Conestoga Road, Malvern, Pa., 610.644.3500.

**WALNUT STREET THEATRE**—America's oldest continuously operating theater has been bringing classics to life on stage since 1809. This month on the Mainstage: "The Humans," **through March 4**; "A Steady Rain," **through March 25**; "Noises Off," **March 13-April 29**. At WST for Kids: "The Musical Adventures of Flat Stanley Jr.," **March 31-April 14**. [www.walnutstreettheatre.org](http://www.walnutstreettheatre.org). 825 Walnut St., 215.574.3550. **Map 1, J5**

**Navigate**



**Rittenhouse Square**  
Located in Center City, this park was one of five original squares city founder William Penn planned in the 18th century. The tranquil oasis is also a hub of activity, hosting flower shows, art exhibitions and markets. Residents and office workers alike stroll the green space, exploring the flora and art, from Cornelia Van A. Chapin's playful Giant Frog to Antoine-Louis Barye's dramatic Lion Crushing a Serpent. [www.friendsofrittenhouse.org](http://www.friendsofrittenhouse.org). 210 W. Rittenhouse Square. **Map 1, G6**

There's a lot more going on this March. Visit us online: [wheretotravel.com](http://wheretotravel.com)

**Specialty Tours**

**BIG BUS COMPANY: PHILADELPHIA**—Hop on and off double-decker buses as much as you like during a one-, two- or three-day pass. Tickets can also be used with Philadelphia Trolley Works. Tours depart from the N.E. Corner of 5th and Market streets and stop at 27 attractions. One day: \$32, seniors \$29, children (ages 4-12) \$10, under 4 free. See website for full list of prices and tour offerings. Free hotel pickup in Center City and at airport (shuttle). [www.phillytour.com](http://www.phillytour.com). Tickets: 215.389.8687 or on the bus.

**CITY HALL INTERIOR AND TOWER TOURS**—These tours explore the history, art and architecture of the world's highest masonry load-bearing structure, which consists of 88 million bricks. Ascend 500 feet to the top of the historic tower via elevator for spectacular panoramic views of the Benjamin Franklin Parkway and skyline from the city's highest open-air observation deck. East Portal, Room 121. Interior: \$15. Tower: \$8, seniors/military \$6, students \$4, under 3 free. M-F 9 am-4:15 pm, and some Sa. 11 am-4 pm. [www.phlvisitorcenter.com/cityhall](http://www.phlvisitorcenter.com/cityhall). Broad and Market streets, 215.686.2840.

**DOUBLE DECKER HOP-ON-HOP-OFF TOUR OF PHILADELPHIA**—Philly Tours offers this double-decker bus ride that takes passengers through two dozen stops (90 minutes total) across the city, with unlimited hop-on, hop-off privileges. Passengers get a bird's eye view from the second-story, open-air cabin as friendly guides narrate Philadelphia history, from Colonial times to the legacy of the

hot pretzel. \$9.95-\$34.95; one- and two-day ticket options. [www.phillytours.us](http://www.phillytours.us). 212.852.4822.

**PHILADELPHIA TROLLEY WORKS**—This trolley takes riders to 27 stops throughout the city. Hop on and off on a one-, two- or three-day pass. Tickets can also be used on the Big Bus Philadelphia. Trolleys depart frequently from the northeast corner of 5th and Market streets. One day: \$32, \$29 seniors, children (ages 4-12) \$10, under 4 free. Visit website for full list of prices and tour offerings. Free hotel pickup in Center City. [www.phillytour.com](http://www.phillytour.com). 215.389.8687. **Map 1, K5**

**TASTE OF PHILLY FOOD TOUR**—Learn the story behind Reading Terminal Market and Philly food favorites during this 90-minute, food-writer-led walking tour. Discover where Milton Hershey got the idea for Hershey Kisses and the proper way to order a cheesesteak. Reservations required. Tours depart W and Sa at 10 am. \$16.95, \$9.95 children (ages 7-11), under 7 free. [www.tasteofphillyfood-tour.com](http://www.tasteofphillyfood-tour.com). Reading Terminal Market Welcome Desk, 12th and Filbert streets Call 215.545.8007. **Map 1, I4**

**Transportation**

**LUCY BUS ROUTE**—This weekday service stops at key locations in the University City neighborhood, including 30th Street Station, University of Pennsylvania, University City Science Center, University of Pennsylvania Medical Center and Drexel University.

\$2.25 base fare. Departs 30th Street Station every 12 to 35 minutes. M-F, Green and Gold Loop: 6:10 am-7 pm. Wheelchair accessible. [www.universitycity.org/lucy](http://www.universitycity.org/lucy). 215.580.7800.

**THE PHILLY PHLASH DOWNTOWN LOOP**—A quick, convenient and affordable connection to popular attractions, the PHLASH takes riders to 22 stops every 15 minutes, 10 am-6 pm. \$2 single ride, \$5 all-day pass; free for children (ages 4 and under), seniors and SEPTA pass and key card holders. [www.ridephillyplash.com](http://www.ridephillyplash.com). 800.537.7676.

**SEPTA**—SEPTA (Southeastern Pennsylvania Transportation Authority) provides bus, train, trolley and subway service throughout Philadelphia and the surrounding suburbs. One-way subway or bus fare is \$2.25. Unlimited travel for one day on any SEPTA vehicle is available with the One Day Independence Pass for \$12 or the Family Independence Pass for \$29. [www.septa.org](http://www.septa.org). 215.580.7800.

**Visitor Information**

**INDEPENDENCE VISITOR CENTER**—This state-of-the-art facility serves as a primary point of orientation for Independence National Historical Park. Multilingual staff offer assistance and maps and brochures to over 200 sights. Also here, tickets to more than 100 tours and attractions, including free, timed tickets to tour Independence Hall (arrive early.). Daily 8:30 am-6 pm. [www.PHLvisitorcenter.com](http://www.PHLvisitorcenter.com). Sixth and Market streets, 800.537.7676.

**POUNDING THE PAVEMENT** Thanks to city founder William Penn, the Center City district is laid out in a grid design, making the zone easy to get around and wonderfully walkable.



MAP 1 PHILADELPHIA DOWNTOWN WEST

PHILADELPHIA DOWNTOWN EAST





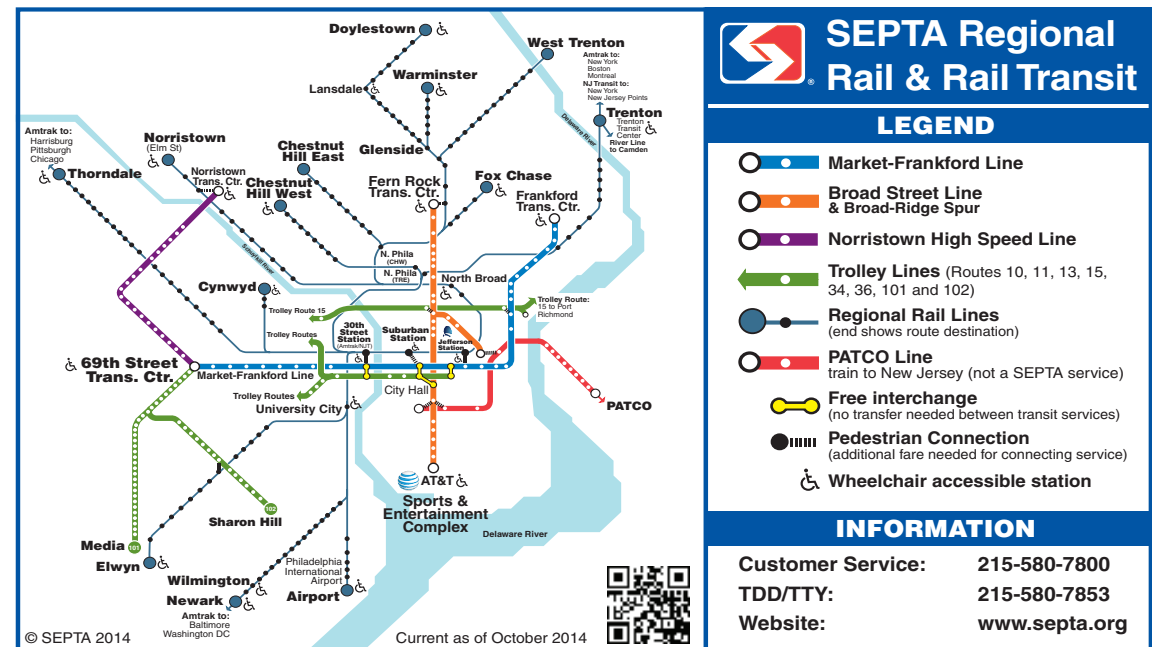
MAP 2 PHILADELPHIA HISTORIC AREA



MAP 3 PHILADELPHIA SOUTH OF WASHINGTON AREA



MAP 5 PHILADELPHIA SEPTA



[WHERE INSIDE]  
**Philadelphia Your Way**

UNIQUE TRAVEL RECOMMENDATIONS, FIT TO MATCH YOUR PERSONAL STYLE.  
 FIND THE CITY CURATED FOR YOU AT [WHERETRAVELER.COM/PHILADELPHIA](http://WHERETRAVELER.COM/PHILADELPHIA).



**Nightlife**

Philadelphia is known for its history and culture, but also has a buzzing nightlife. Whether they're into poker or slots, gamers find endless fun at **(1) SugarHouse Casino**. Entertainment seekers also have plenty to look forward to here, thanks to a concert venue booking big-name and indie acts from tribute bands to local favorites. Cocktail connoisseurs find great drinks to try at local favorite **(2) Pub & Kitchen**. "The Delancey" is not only named after the city's most iconic (and expensive) street, it's also a delicious blend of champagne and elderflower. Restaurant and dance club **(3) Vesper** makes an ideal stop for groups of partiers. Start off in the upscale dining room (reservations recommended) and then head to the back, where live music has crowds going till closing.

**Top Things**

No matter how busy your schedule, carve out time to visit **(1) The Franklin Institute**, honoring Benjamin Franklin. See a show inside the planetarium or the Tuttleman IMAX theater or wander through exhibits like SportsZone, Your Brain and The Giant Heart. **(2) Eastern State Penitentiary** was once home to some of America's most notorious criminals. Now this historic site's narrow alleyways and tiny cells shed light on the inmates who once lived here. Weekday visitors shouldn't miss Philadelphia's historic **(3) City Hall**. Daily tours through the largest municipal building in the United States end with an elevator ride up to the William Penn statue, offering sweeping views of the city. Weekend visitors can still ride to the top, so be sure to stop in for a ticket.

**Art Lovers**

The City of Brotherly Love loves its art, which seems to be everywhere you turn. People come from all over the world to visit one of the city's most popular hubs of fine art, the **(1) Philadelphia Museum of Art**—and for good reason. Along with rotating exhibitions, Monet, Matisse and Cézanne are just some of the iconic names you'll find here. Philly is also known for its many stunning murals. And thanks to **(2) Mural Arts Program Tours**, there are many ways to see them. Explore these works by foot, train or segway, which highlights over 35 vibrant paintings in a variety of neighborhoods. Weather permitting, make **(3) South Street's Magic Gardens** a must-stop during your visit. Ten minutes is all you need to see (and get inspired by) the maze-like mosaic wonderland.

(FROM TOP TO BOTTOM, LEFT TO RIGHT) ©G.WIDMAN/VISIT PHILADELPHIA; COURTESY PUB & KITCHEN; COURTESY VESPER; ©R. KENNEDY/VISIT PHILADELPHIA; ©C. SMYTH/VISIT PHILADELPHIA; ©J. SMITH/VISIT PHILADELPHIA; ©M. FISCHETT/VISIT PHILADELPHIA; ©K. CIAPPALVISIT PHILADELPHIA; ©PAUL JOSEPH/FLICKR; CREATIVE COMMONS

**WIN A TRIP TO NYC**  
 and National Geographic Encounter: Ocean Odyssey!



National Geographic Encounter: Ocean Odyssey is a ground-breaking immersive entertainment experience that uses cutting-edge technology to transport you on an incredible underwater journey across the ocean.

Join your friends and family on this interactive, walk-through experience where National Geographic Encounter's photo-realistic animation gives you access to rarely seen moments in nature. Encounter a life-sized Humpback whale, a battle between ferocious Humboldt squid, a magnificent bait ball feeding frenzy and much more!

**ENTER DAILY through March 31, 2018 at [wheretraveler.com/contest](http://wheretraveler.com/contest)**

\*Trip includes airfare and accommodations for two, plus more.



**ENCOUNTER**  
 OCEAN ODYSSEY

Times Square

[natgeoencounter.com](http://natgeoencounter.com)

**#OceanOdyssey**

[wheretraveler.com](http://wheretraveler.com)